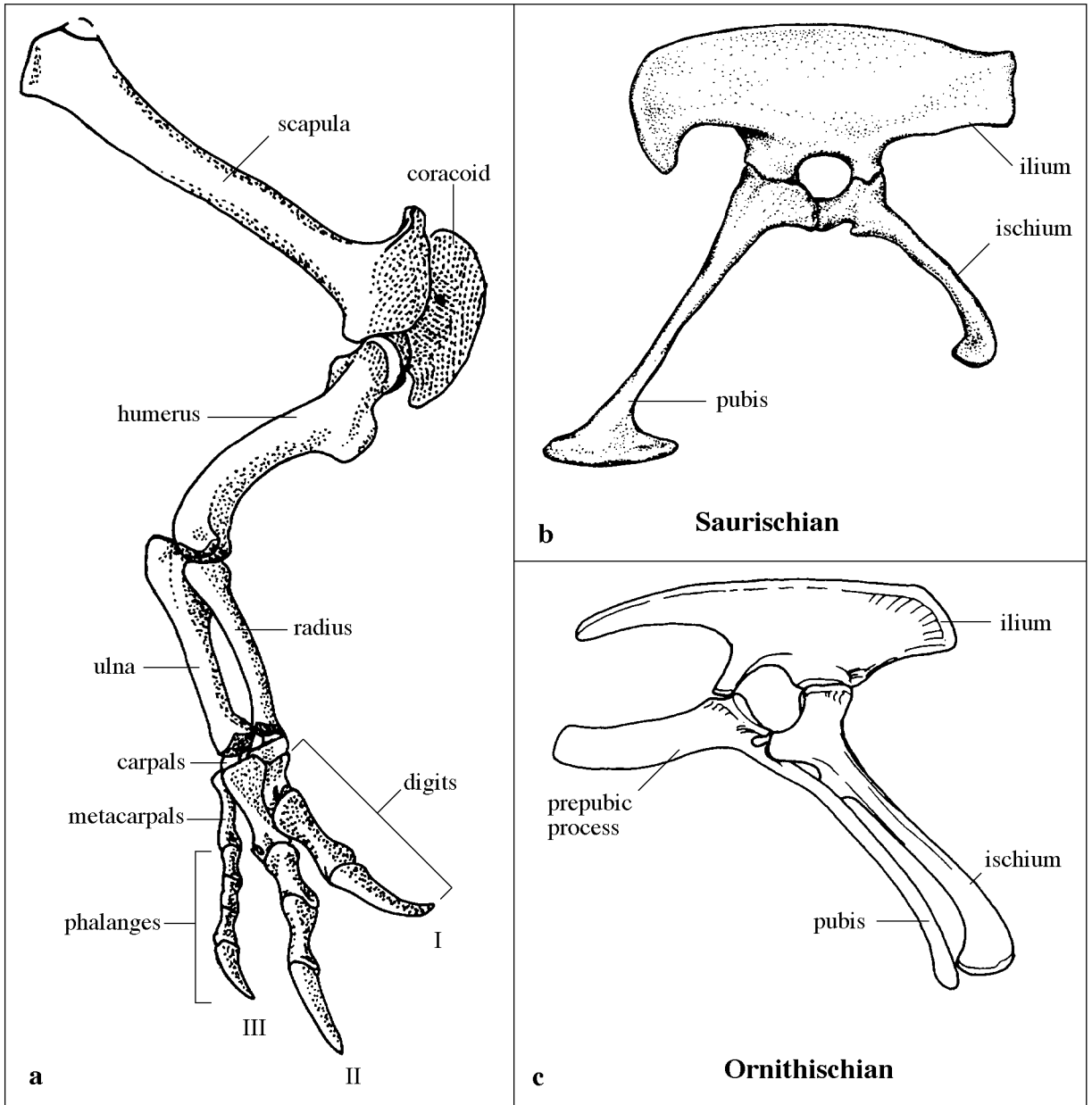


Figure 5



Pectoral and Pelvic Girdles

- a. Pectoral girdle & forelimb: *Allosaurus*, Late Jurassic, saurischian (after Molnar et al., 1990)
b. Saurischian pelvis: *Gallimimus*, Late Cretaceous (after Barsbold & Osmolska, 1990)
c. Ornithischian pelvis: *Camptosaurus*, Late Jurassic (after Norman & Weishampel, 1990)