

**Snapshot Day 10/8/09 Data
(Salt Front RM 60.3)
RIVER MILE 31 – Hook Mountain State Park
Laurie Seeman & Joanne Dickey– Strawtown Art & Garden Studio
Lorraine Marden Komar & Meredith Kates -Blue Rock School –
6th, 7th & 8th – 22 students**



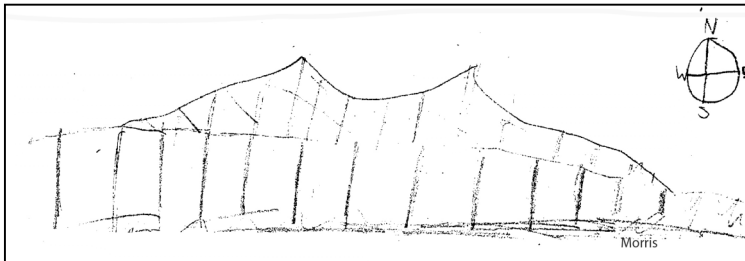
Center image: A water celery Earth
Art Medicine Wheel of the Hudson
River
Laurie Seeman & Joanne Dickey
& students



Location: Nyack Beach near Hook Mountain Sandy Beach right side of riverfront area

Area: Park/Boat launch, sandy beach area on the point

Surrounding Land Use: 50% forested, 20% beach, 30% used for recreation & picnics and parking lot



Sampling Site: Beach – with a lot of trees, picnic tables, sandy and rocky at edges, covered with vegetation beyond the beach, stone wall, riprap shore, collected wood debris –not many houses.

Piping coming into river south of sampling site

Plants in water: 1% water celery

Plants in area: Japanese Knotweed 50%; Sumac

Water depth: 18 inches

River Bottom –sandy, muddy, rocky

<i>ITEM</i>	<i>Time</i>	<i>Reading 1</i>	<i>Reading 2</i>	<i>Comments</i>
<i>Physical</i>				
Air Temperature	11:02 AM	18°C 18 17	66°F 66 65	17.6°C 65.66°F
	11:34 AM	18°C 18	66°F 66	18°C 66°F
Wind Speed	Beaufort 3		NE	
				Water Calm
Cloud Cover	clear			
Weather today	No rain – windy			
Weather last 3 days	Very windy, rainy			
<i>Water Temperature</i>	11:10 AM	20°C	20°C	20°C
	1:04 PM	21°C	21°C	21.5°C
	1:44 PM	21°C	21°C	21°C
<i>Turbidity</i>	1:04 PM	5 JTU 10 JTU 5 JTU		6.7 JTU average
<i>Chlorophyll</i>	10:48 AM	0.1 each		
<i>Chemical</i>				
DO <i>Drop count</i>	11:02 AM	5 mg/L	18 ° C	50%
pH <i>Indicator solution</i>	11:45 AM	8.0 8.0 7.0		Average 7.6
<i>Phosphate</i>	10:25 AM	1 ppm	1 ppm	Average 1 ppm
<i>Nitrates</i>	10:45 AM	5 ppm	5 ppm	Average 5 ppm
Salinity <i>Test strip/</i>	10:45 AM	3300 ppm 3594 ppm 3594 ppm	3.3 ppt 3.6 ppt 3.6 ppt	
<i>Fish Catch</i>	<i>Number Caught</i>	<i>Species</i>		
<i>Seine 12 ft. X 6ft. Mesh 0.25 inch</i>	2	Atlantic Silverside	1.5 inch	SEINE #1
<i>8 feet of pull</i>	10	Atlantic Silverside (?)	3.5 inch	SEINE #2
<i>3 seines</i>	1	Killifish	1.25 inch	
	1	Mini crab	.75 inch	

<i>Tides</i>	11:35 AM	24 cm		
	11:55 AM	28 cm	rising	
	12:53 PM	38 cm	rising	
	1:13 PM	44 cm	rising	
<i>Currents</i>	<i>CM/60 secs</i>	<i>Cm/Sec</i>	<i>North/South Ebb/Flood/Still</i>	<i>Knots</i>
<i>11:43 AM</i>	168 cm	2.8	South (Ebb)	0.05 kts
<i>12:56 PM</i>	258 cm	4.1	South (Ebb)	0.088 kts
<i>Turbidity Short site tube</i>	10:45 Am	40 JTU	40 JTU	Average 40 JTU
<i>Core Description</i>	<i>Total Length</i>	<i>Top Layer</i>	<i>Second Layer</i>	<i>Describe</i>
<i>Commercial Traffic</i>		Grey Speedboat		Northbound – ½ full
<i>Other</i>	ducks swimming, cormorants diving Some litter and footprints			