

**ROCKLAND P.L.U.S.
PLANNING LAND USE WITH STUDENTS**

High School Students from throughout
Rockland County coming together to
collaborate and plan for sustainable
communities

Let's talk about Communities!

What makes a community a place you want to live?

Things to do? Sports?
Family?
Being able to get places?
Places to shop?
Volunteering? Jobs?
Parks available?
The people?



Here are some examples of community features.
Do some of these seem important to you?



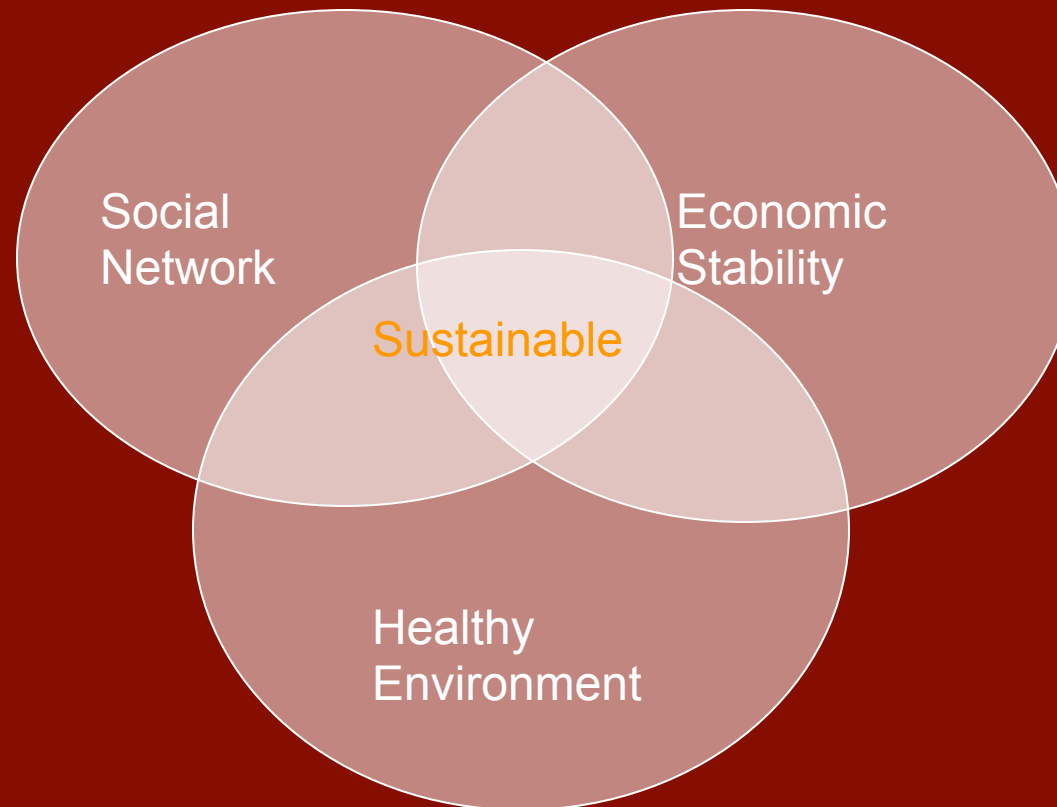
Here are some examples of community features.
Do some of these seem important to you?



What do YOU think would be essential for a community?



How can we plan for a healthy, sustainable community?



Rockland P.L.U.S. addresses the social, economic, and environmental aspects of development our communities



Community Planning Around Transportation



Transit Oriented Development. Does this look like your community? Why or why not?



Rockland P.L.U.S. is also about the Planning Process

Provide effected individuals or groups with a way to learn about development plans and offer input. Collaboration is key.

Principle #1 Collaboration



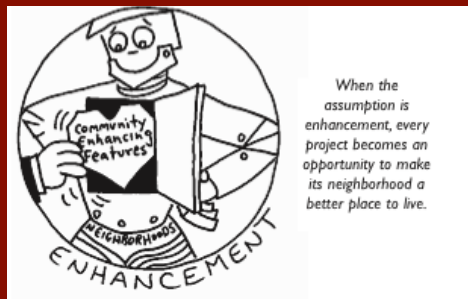
Voluntary collaboration between neighbors, developer, and environmentalists yields community-enhancing projects.

Principle #2 Focus Outward from the Property



The proposed project becomes the heart of its surrounding neighborhood.

Principle #3 Look for Enhancement



When the assumption is enhancement, every project becomes an opportunity to make its neighborhood a better place to live.

Principle #4 Sustainability



Collaboration adds resources.

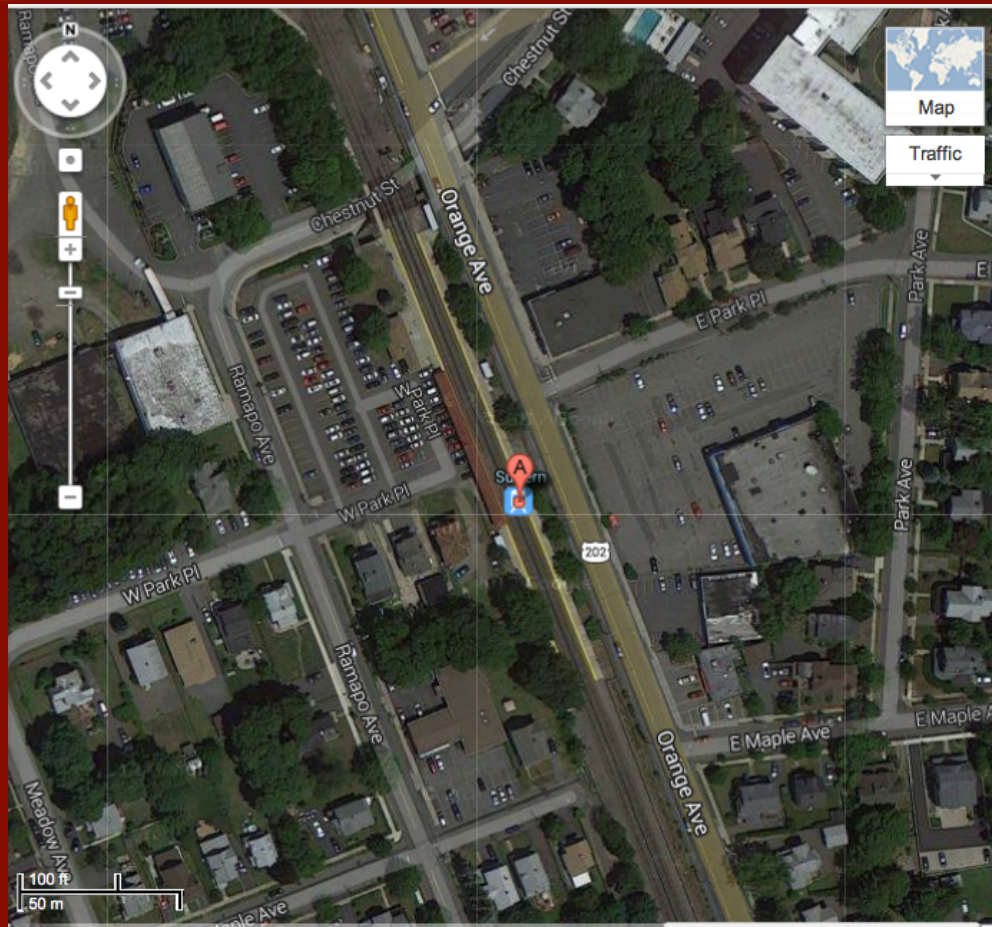
Confrontation drains resources.

From Karl Kehde's
"Smarter Land
Use Project"

Planning for a healthy, sustainable community involves collaboration



What's next? Before we see you next you will visit your community site



Suffern Train Station



Image of Assessment Form



ROCKLAND P.L.U.S.
PLANNING LAND USE WITH STUDENTS

Site & Community Assessment

**Page 1 is to be completed during a field visit by the students, independently in or small groups.
Page 2 focuses on community linkages - designed for small group work in class.*

Your focus is Transit Oriented Development (TOD) – a planning design that includes mixed-use residential and commercial areas focused around public transit in order to maximize access and encourage ridership. Start by reviewing the map of your community train station on the PLUS website (you may wish to print the map to take).
<http://www.ldeo.columbia.edu/plus/Rockland.html>

The area selected for you to consider for redevelopment is not just the train station but the block around the station. Use the google map and this form as a guide to help you investigate the site. Consider the following to build linkages to the wider community: community character; existing resources; your selected 'community enhancing features'; and how to highlight public transit.

SITE ASSESSMENT QUESTIONS #1-5:

- List 5 descriptive words that you think best describe the appearance of your transit station.
- List 5 descriptive words that you think best describe the appearance of the area around the transit station.
- What challenges do you see in improving the transit station and redeveloping the area around it? (for example: expenses, competing business, clean up costs, traffic issues, etc.)
- What community enhancing features (CEF) at this site should be added, retained or enhanced? Do any of them match the CEF you selected during our classroom activity? Which one/s? (Remember to consider uses for the different periods of time: X, Y and Z)
- In planning, having the support of others who live and work in the community is an important part of the process. Think about different groups and members of your community that might care about what happens to this space (for example sports teams, senior citizen groups, affordable housing groups, homes and businesses near the site). We call these different people/groups 'stakeholders' in the planning process.

Who should be considered when re-developing your site? Who are the stakeholders? Brainstorm a list with your class and consider if you should involve any of them in the planning & development of your proposed site. You can go to <http://www.planet-rockland.org/default.html> to further explore groups in your community who you might work with.

Complete the form to help you plan!

ROCKLAND P.L.U.S.
PLANNING LAND USE WITH STUDENTS

Team activity: to complete as a class project or small groups.

Think about your village/town and consider its strengths and weaknesses. How can your site improve your community? Use your own knowledge of your community or check the County website - <https://rocklandgov.com>

Considering your wider community (the village or town around the site), rate the following features under **Strengths** or **Needs/Challenges** using a score of 1 (mainly absent) to 5 (well represented). Support your number choice with a few words of explanation.

Community Feature – How does your community rank in these categories?	Strengths Rank: 1 (low) - 5 (high)	Comments: Needs/Challenges
Cultural Community Character: <i>Places of Historical Significance* Arts* Theatres</i>		
Demographic Diversity: <i>Diversity of people and backgrounds</i>		
Housing/Affordability/Mix of Housing: <i>Apartments* Condos* Single family homes* Options for singles* Families* Retired</i>		
Transportation/Accessibility/Walkability: <i>Public transportation* Sidewalks* Drivable roads* Bike Trails* Crosswalks* Walking Paths</i>		
Health & Wellness: <i>Healthy food options* Exercise opportunities* Preventive treatment* Clinics and hospitals close by* Opportunities for Health Education</i>		
Social/Recreation: <i>Opportunities for various ages: children/teens/adults/seniors?</i>		
Wilderness: <i>Undeveloped areas ranging from open space to parkland</i>		
Environmental Awareness: <i>Community awareness? Of streams? Recycling? Are people energy conscious?</i>		
Water & Energy Conscious Development: <i>Stormwater runoff collection, Energy saving (i.e. solar or automatic light switch off), green building requirements.</i>		
Goods & Services (i.e. stores, shopping): <i>Can you walk to them?</i>		
Education: <i>Are there schools there? (pre schools through college level)</i>		
Safety: <i>Is there street lighting, fire depts., police? Do residents feel safe?</i>		
Employment: <i>Range of opportunities from entry level to professional</i>		
Aging in Place: <i>Transportation & living space for seniors in the community</i>		

***Brainstorm:** Based on your completed table, evaluate the overall needs of the community. What opportunities do you see to improve your community? (Look for low rankings in column #2)

Use your phone - Take Photos! Complete 'Community Assessment Form'



So we can begin planning next visit!

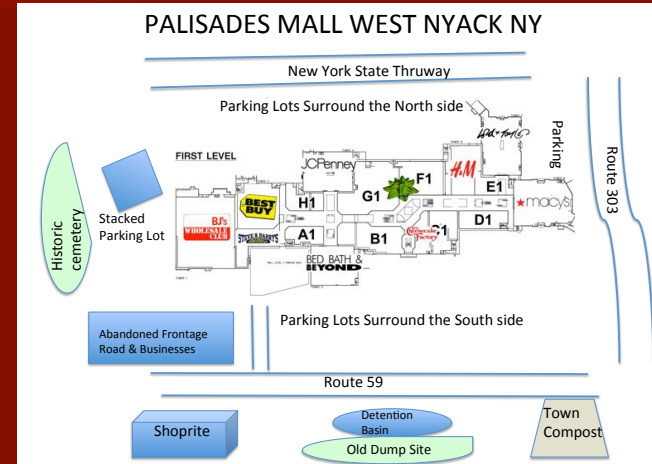
Nanuet Train Station

Our Time With You

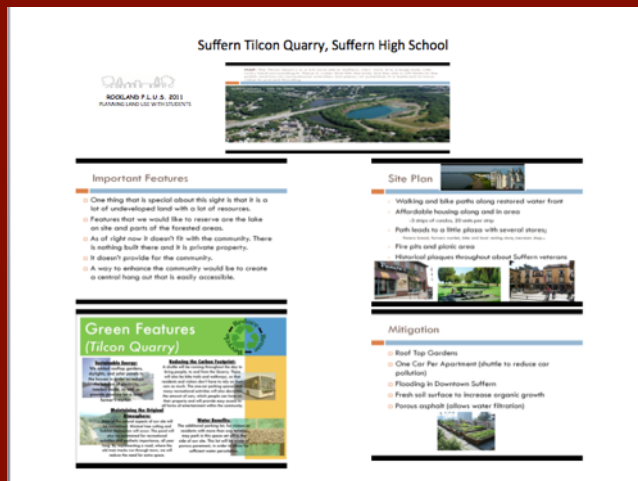
1st—What's in a Community?



2nd – Planning Around a TOD



3rd— Gather ideas into a poster



Participate in the Symposium!



Rockland P.L.U.S.
March 21, 2014
Rockland Community College
8:30 a.m. – 1:30 p.m.



Photo by Geraldine
Collins 2012

Rockland P.L.U.S. 2014 is a collaborative partnership of

1. Lamont-Doherty Earth Observatory of Columbia University
2. Keep Rockland Beautiful
3. Rockland Conservation & Service Corps
4. SUNY Rockland Community College