

MENTOR GUIDE TO ROCKLAND PLANNING LAND USE WITH STUDENTS

1

PROGRAM GOAL: For High School Students throughout Rockland County to be introduced to:

- The power of land use planning in shaping a community for all ages,
- Their opportunities as young adults to be part of local planning,
- The importance of sustainable planning for our community,
- Careers opportunities that are available to them

Mentor Information
For 2022 Programs Both Virtual & In Person

Mentor's Role Rockland PLUS Program

2

Main Responsibilities:

- **Bring your experiences**, both career and life, into your interactions with the students.
- **Introduce yourself**, and briefly your work, to expand career opportunities for them.
- **Students will present their sustainable planning ideas.** They are enthusiastic and creative in how they approach things, and excited to share what they have developed, although a bit nervous!
- **Light & Positive Approach!** Please balance all the realities of your world with the new approaches they suggest, in considering how their ideas, or parts of their ideas, might benefit the space.
- **Encourage a dialogue with them!** Offer suggestions in a way that elicits a discussion. 'Did you consider?...What if you tried?...etc.'

How will 2022 operate?

3

1. **SOME SCHOOLS WILL BE VIRTUAL.** The platforms will vary by the school involved, if virtual some use 'Google Meet' others 'Zoom'. We will handle this side and send full information to connect you.
2. **A FEW LARGE SCHOOL GROUPS WILL BE IN PERSON AT THE SCHOOL.** We will help to coordinate at the school with the mentor.
3. **ALL THEIR LOCAL PRESENTATIONS WILL BE IN GOOGLE EARTH PROJECT.** They have developed a customized virtual project about a local site in their community to share with you whether virtual or in person.
4. **EACH MENTOR WILL WORK WITH A COUPLE OF SMALL GROUPS** with support and guidance from a facilitator &/or teacher. This provide two adults with each set of student teams. The facilitator will manage things!
5. **AFTER PRESENTING THEIR INDIVIDUAL PROJECTS STUDENTS WILL RESPOND TO THE HAVERSTRAW CHAIR FACTORY SITE IDEAS.** Recently, ideas have been proposed for redeveloping this site as part of the Haverstraw Revitalization project. Students will respond to questions (slide #11) on how the plan addresses, or could address sustainable concepts.

The Rockland PLUS Program

4

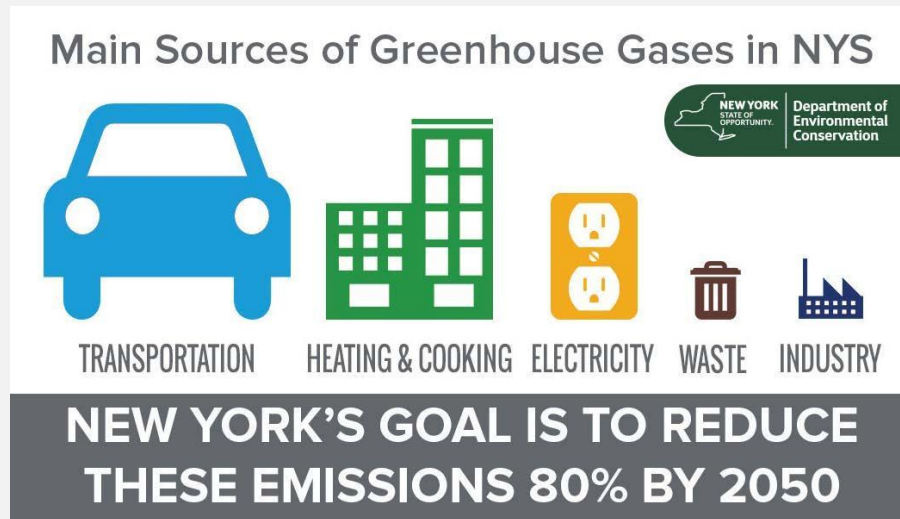
The Students Participate in a Four Stage Process

- **Three visits to each classroom** to lay the groundwork. Each visit contained background content & an activity to put it into practice:
 - **Visit #1** conceptually what creates a sustainable community
 - **Visit #2** they assess strengths & weaknesses of their Town/Village & looked at Climate Smart Communities
 - **Visit #3** they examine a local project in their community and create a sustainable plan
- In 2022 we have worked with **16 classes and ~300 students in 11 high schools** in Rockland County.
- **Part four** is the culmination in a Symposium.

We emphasized New York State's role in taking action & Climate Smart Communities



New York State is experiencing higher climate impacts than the national average. In response they have set some very aggressive energy reduction targets!



Reduce 40% by 2030 and 80 % by 2050 from 1990 GHG emission levels.

EVERY COMMUNITY MUST HELP...BUT HOW?

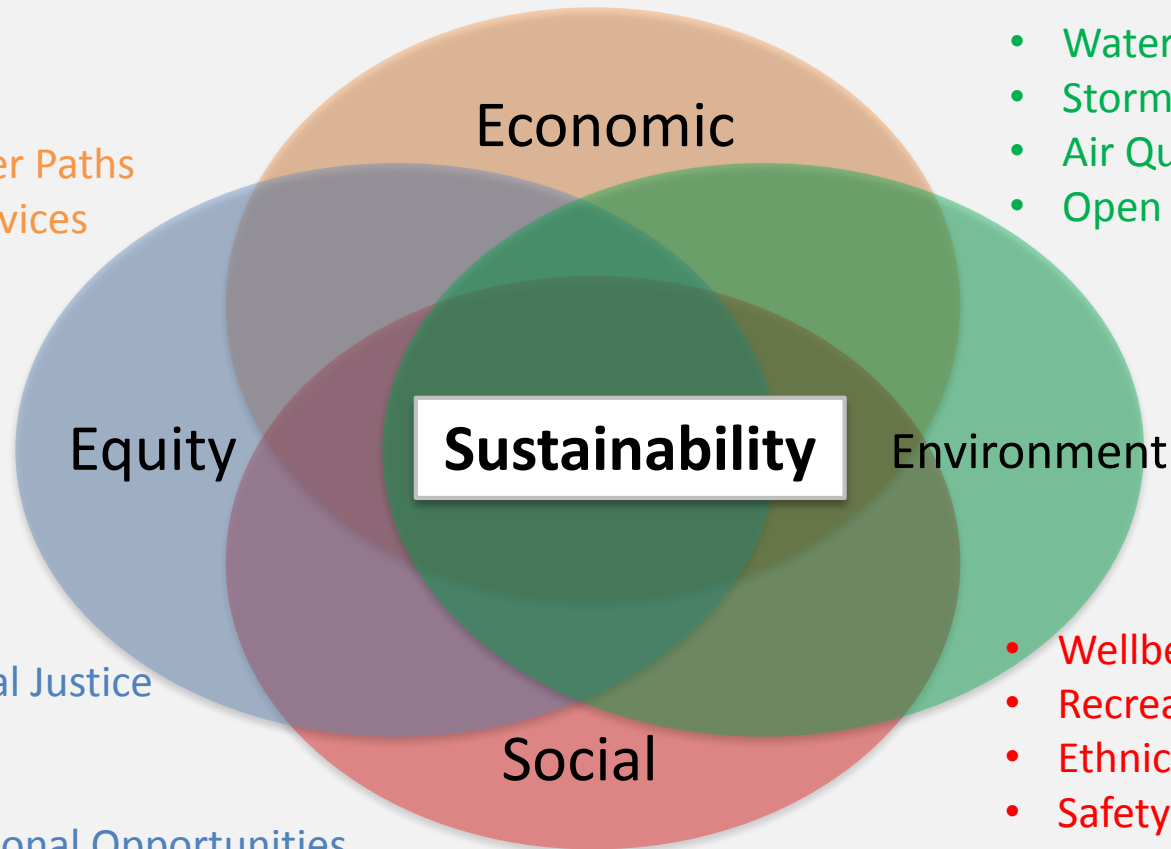
We introduced what is meant by a sustainably planned community

6

Sustainable Community Planning means bringing balance to issues locally and regionally considering Social, Economic, Environmental and Equitable factors

- Housing
- Transportation
- Jobs with Career Paths
- Diversity of Services

- Water Resources
- Storm Water
- Air Quality
- Open Space & Wildlife



- Environmental Justice
- Cohesion
- Welfare
- Job & Educational Opportunities

- Wellbeing
- Recreation
- Ethnic Character
- Safety
- Community Voice

Students planned their google earth project



Sample from 2017

Mentors' Role: The Virtual Symposium: School Presentations

8

As mentors each of you brings a unique quality to share, through your role in the community. Together you provide a range of stakeholders.



Your role during the presentation by students on their local site is to listen to them and give feedback, with a light touch, on their plans. Encourage a dialog by posing questions and encouraging input and thoughts from the students. They have been encouraged to think broadly and creatively to build a project that enhances their community.

The Symposium – Consider Discussing

9

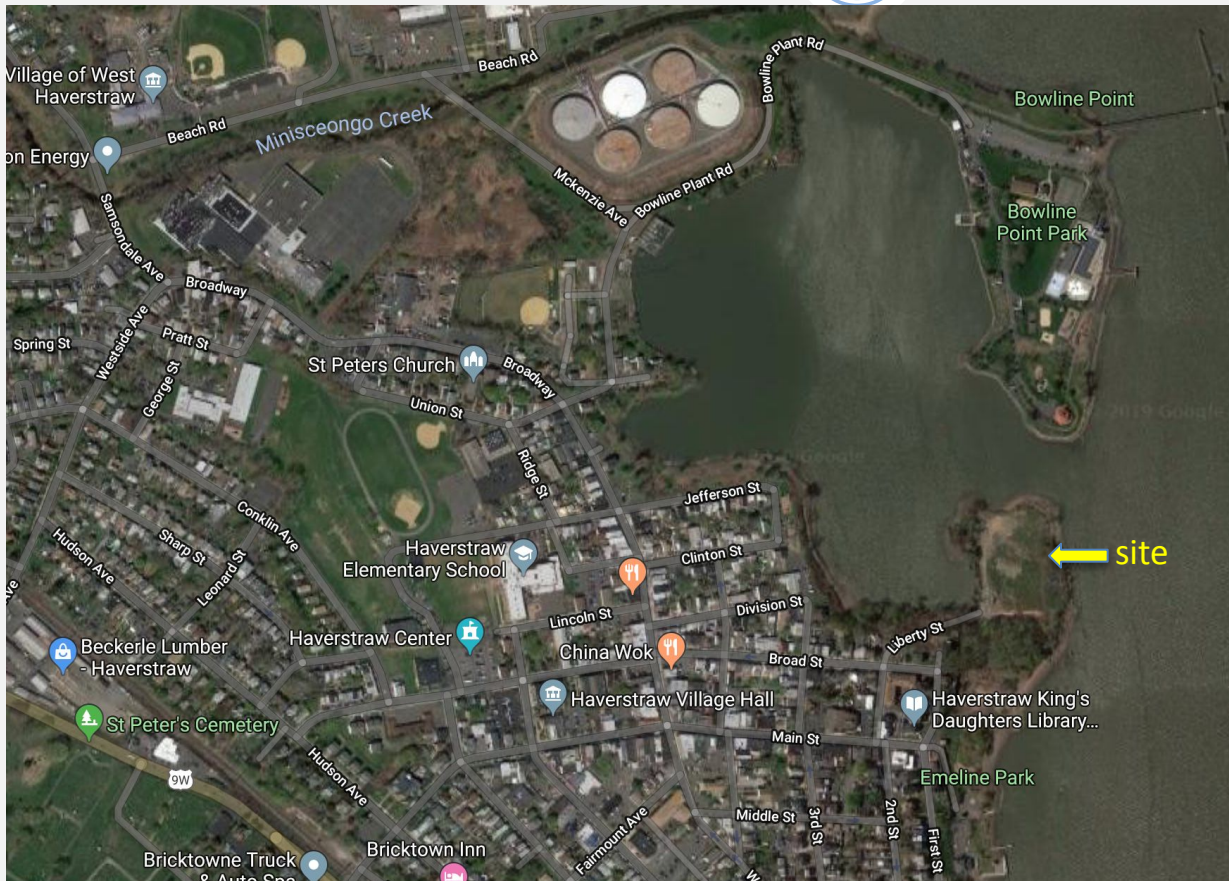
- What strengths did you find in it?
- What did you think was innovative?
- What would you like them to think more about?
- Can you suggest a new community partner group for them?
- Can you suggest something to add a new layer or element to their plan?
- Ask the students how they think their Town or Village would respond to their plan?



Great ways to engage the students are with questions like...“What do the rest of you think?”

The Symposium: Orientation to New Site: The Chair Factory Site in the Village of Haverstraw

10



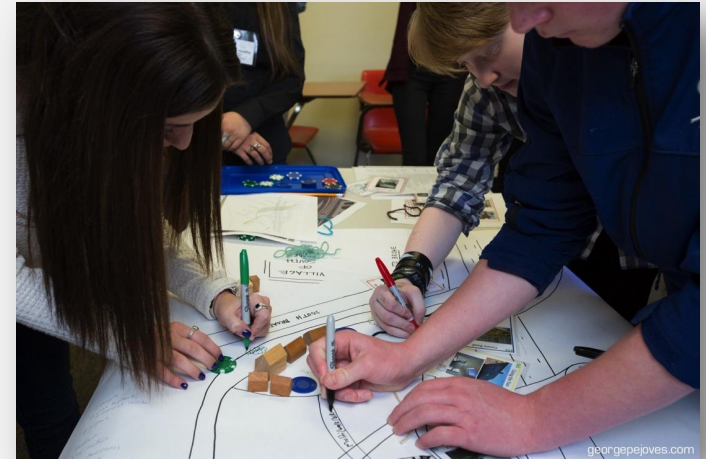
Part #2 focuses on the redevelopment of the 10 acre Chair Factory Property on the Haverstraw Waterfront just north of Emeline Park and the Harbors at Haverstraw. Students will work in groups to consider the plan.

Their focus for the Chair Factory

11

They will be instructed to:

- Identify community strengths & challenges
- Identify strengths and weaknesses (concerns) for the site.
- Consider waterfront development approaches that address the challenges of storm surge and sea level rise
- How does the project build connections to the downtown, Harbors, Ferry & Emeline Park
- Consider community partners to engage with on proposed usage
- How does the project address needs of the community? and enhance the wider community?
- Identify Sustainable and Climate Smart features that you see, or that could be part of the plan?



Rockland P.L.U.S. 2022 is a collaborative partnership

12

1. Keep Rockland Beautiful
2. Lamont-Doherty Earth Observatory of Columbia University
3. Rockland Conservation & Service Corps
4. Rockland County Soil & Water Conservation District

Thank You Sponsors!

Rockland Municipal
Planning Federation

 Rockland County

M & T Charitable
Foundation

 Orange & Rockland

 **People's United**
Community Foundation