

FACILITATOR GUIDE TO ROCKLAND PLANNING LAND USE WITH STUDENTS

1

PROGRAM GOAL: For High School Students throughout Rockland County to be introduced to:

- The power of land use planning in shaping a community for all ages,
- Their opportunities as young adults to be part of local planning,
- The importance of sustainable planning for our community,
- Careers opportunities that are available to them

Facilitator Call 3/22/23 2:00 PM OR 3/29/23 11:00 AM
For the Program Event
3/29/19 at St. Thomas Aquinas College

Our 2023 Event Flow

2

- 1. WE WILL BE IN PERSON!** We will be at STAC for the first time since 2019 and we are all excited to be able to gather again in person.
- 2. PART 1: STUDENTS WILL WORK IN SCHOOL TEAMS TO PRESENT ON A LOCAL SITE. THIS WILL BE IN 'GOOGLE EARTH PROJECT'.** The facilitators will work with one school for this part of the day.
 1. The students have developed a customized virtual project about a local site in their community to share with you.
 2. There will be 1 facilitator, 2 mentors & possibly a teacher or STAC student facilitator in the room for each school. The facilitator will manage things and also be weighing in with ideas and feedback.
- 3. PART 2: STUDENTS WILL BE PLACED IN MIXED SCHOOL TEAMS TO ADDRESS THE HAVERSTRAW CHAIR FACTORY SITE.** At the Symposium the students will be provided a summary of the redevelopment plan for this site, part of the Haverstraw Revitalization project. Students will focus on actions that incorporate a balanced sustainable plan, including climate smart practices.

THE FACILITATOR ROLE

3

You are the guide of your group for the day. You manage the time and the conversation!

- **Guide** your group(s) of young people through the two main activities for the day
- **Encourage** all students to participate in the discussions
- **Engage** the mentor(s)
- **Manage** the activity time
- **Provide** an atmosphere where all ideas are respectfully heard and considered
- **Support** an 'idea incubator', where creative thought provoking concepts are encouraged – strike a balance between novel and even edgy and realistic
- **Have fun with the students & their ideas!**

The Student side of the Rockland PLUS Program

4

- In 2023 we have worked with 17 classes and 293 students in 11 high schools in Rockland County.
- The Students received three classroom visits to lay the groundwork. Each visit contained background content & an activity putting it into practice:
 - Visit #1 conceptually what creates a sustainable community
 - Visit #2 they assessed strengths & weaknesses of their Town/Village/Community
 - Visit #3 they focused on a local project in their community and created a sustainable/climate smart plan
- Part four is the culmination in a Symposium with a subset selected from each class. This year in person at St. Thomas Aquinas College (STAC)!
- We expect ~170 high school students, and a handful of undergraduates helping from STAC.

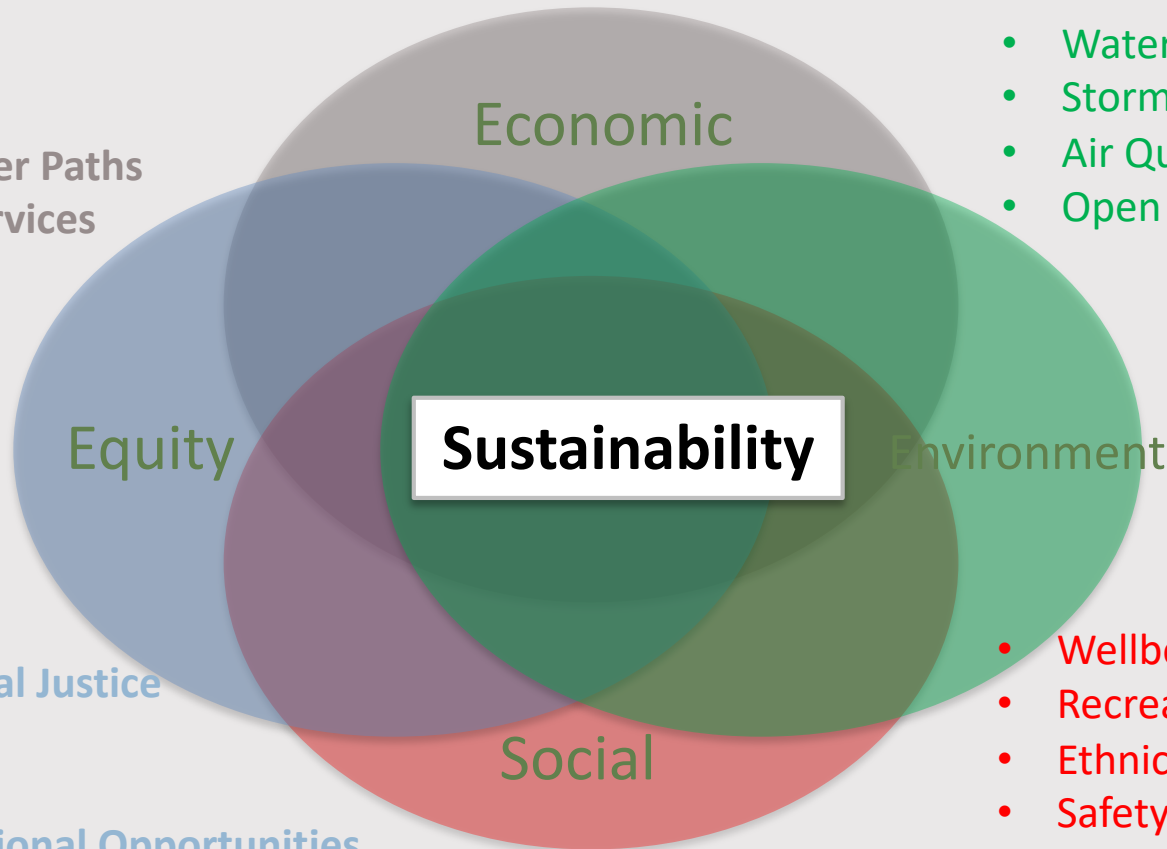
Visit #1: We introduced what is meant by a sustainably planned community

5

Sustainable Community Planning means bringing balance to issues locally and regionally considering Social, Economic, Environmental and Equitable factors

- Housing
- Transportation
- Jobs with Career Paths
- Diversity of Services

- Water Resources
- Storm Water
- Air Quality
- Open Space & Wildlife



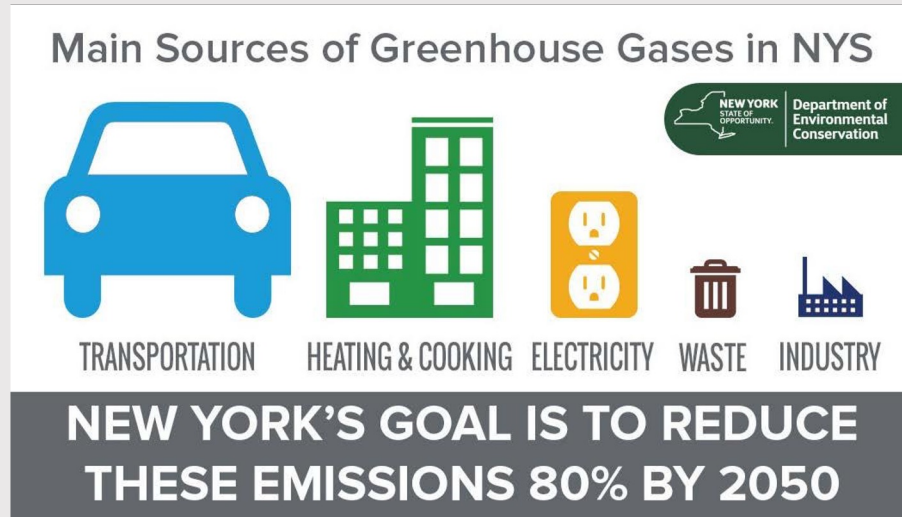
- Environmental Justice
- Cohesion
- Welfare
- Job & Educational Opportunities

- Wellbeing
- Recreation
- Ethnic Character
- Safety
- Community Voice

We emphasized New York State's leadership to take action in mitigating greenhouse gases



New York State is experiencing higher climate impacts than the national average. In response they have set some very aggressive energy reduction targets!



Reduce 40% by 2030 and 80 % by 2050 from 1990 GHG emission levels.

EVERY COMMUNITY MUST HELP...BUT HOW?

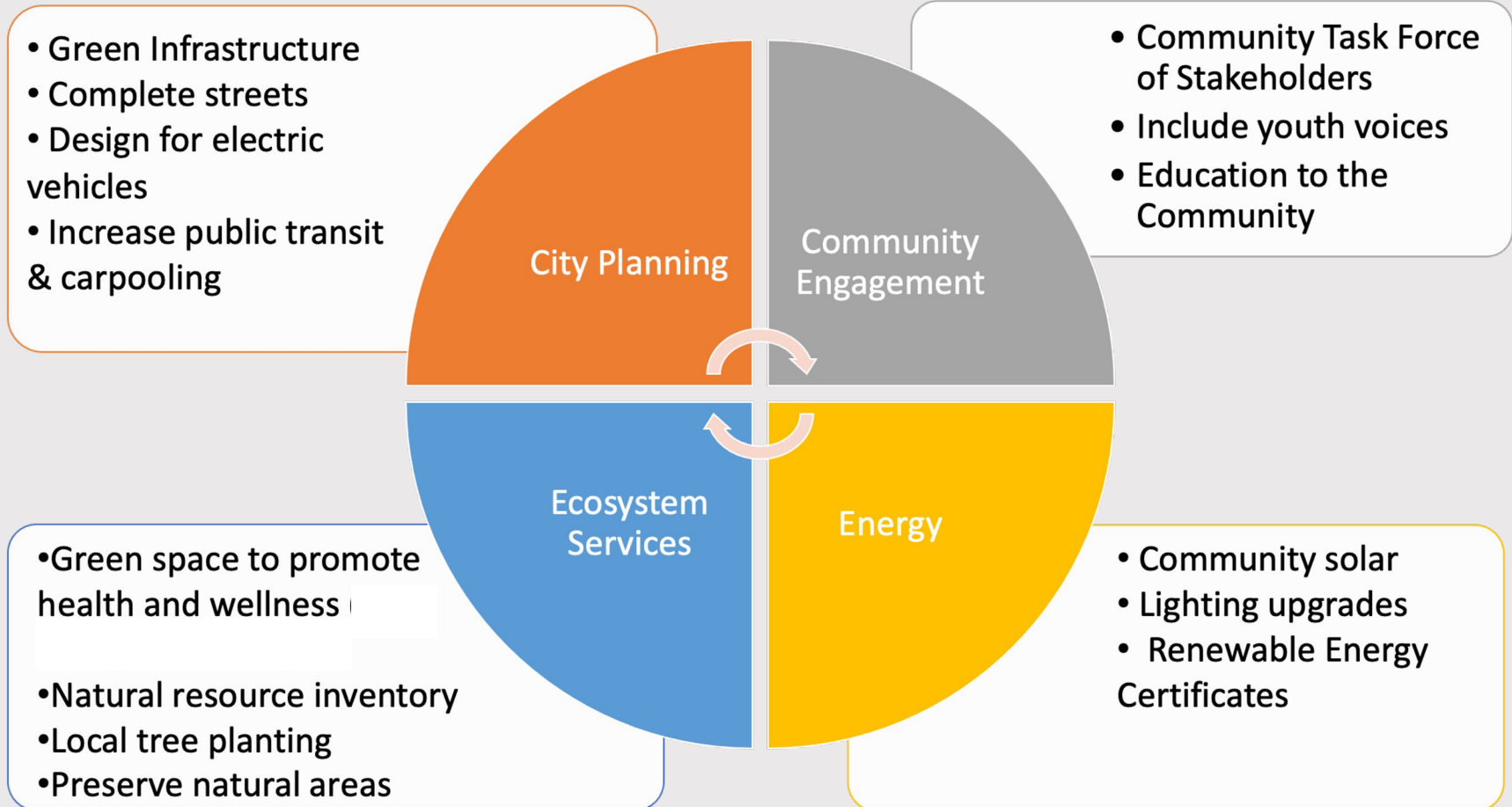
HOW? We introduced....Climate Smart Communities

Visit #2: We discussed **Mitigation** through becoming a **'Climate Smart Community'**



Climate Smart
Communities

Examples of a “Climate Smart” Community (CSC):



We also introduced **Adaptations** to Climate Change Impacts Through Local Examples of Green Infrastructure



Nyack Memorial Park
Permeable pavement



Rockland County Country Club
- Green Roof



Bowline Point Park, Haverstraw -
Rain Garden



Valley Cottage Library
- Vegetated swales



Home for Heroes, Pearl River-
Bio-Retention area



Tappan Zee High School -
multiple approaches

Visit #3: Students planned their google earth project




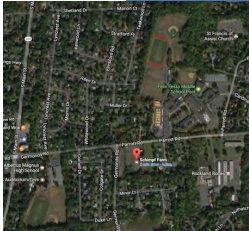
Sample from 2017

Each class has a local site to re-envision – all the site write ups are posted on the website

10

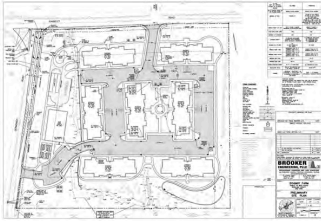
Considering SEEing the community - social, economic and environmental issues...


SCHIMPF FARM, WEST NYACK



LOCATION

An 8.5 acre parcel located at 13 Parrott Rd. West Nyack at the corner of Parrott and Germonds Rd., across the road from Felix Festa Middle School, adjacent to Rockland BOCES, and just down the road from Albertus Magnus High School. The Demarest Kill stream runs along the edge of the property and the site contains federally regulated wetlands.



HISTORY

Farming


When Rockland County was founded farming was an important part of the economy but by 1950, fewer than 150 farms remained, and today only a handful operate. The majority of the farmland in Rockland has been turned into houses starting with a major growth spurt in the 1950s when over 1000 homes were built each year. The opening of the Tappan Zee Bridge in 1955 and the completion of the Palisades Interstate Parkway and the New York State Thruway during the same time was a large part of this change.

Schimpf

The Schimpf's Farm Garden and Landscape Center was a family owned business run by Thomas D. Schimpf until he died in 2011. Thomas was a long time member of the Rockland County Farm Bureau serving 15 years as the president and another 15 years on its board of directors. He supported local farming through many efforts and spent countless hours on education of the public. He understood that farming in suburbia involved educating the public about what farmers do and their role and benefit in a community. Donations were requested to NYS Farm Bureau education funds upon his death, an organization that works hard to expand public knowledge about farming.

PROPOSAL

The proposal calls for the construction of 127 units of senior housing, ~ half one bedroom and the other half two bedroom, built in seven buildings that are 3 stories high. There will be 169 parking spaces. There is a plan to build a 5,500 sf clubhouse, putting green, outdoor trails and sitting areas. The stream will continue to meander along the edge of the property. Plans shown above from Booker Engineering, PLLC.



- Spring Valley Train Station TOD (Rampo)
- Avon Site (Suffern)
- Riverspace (Nyack)
- Tidewater Project (Nyack)
- Sain Building (North Clarkstown)
- Buckley Farm (North Clarkstown)
- P-Tech Campus (P Tech)
- Albertus Campus (Albertus)
- Barr Laboratories (N. Rockland)
- Eagle Bay (N. Rockland)
- Letchworth Village (N. Rockland)
- HNA Facility (Tappan Zee)
- Memorial Park (Spring Valley)
- Verizon Site (Pearl River)
- Central Ave. Fields (Pearl River)

<https://www.ideo.columbia.edu/edu/plus/Rockland.html>

Facilitators' Role First Session School Poster Presentations: Guide & Timekeeper

11

Introduce yourself and ask mentors to introduce themselves with a short sharing of their backgrounds

- Ask the students to present their project
- As needed: encourage them to speak up and elaborate
- As needed: ask prompt questions of students and mentors to encourage the conversation
- Encourage all the students to participate in answering questions and discussion with the mentors.
- Try to keep it positive and supportive
- Help the group summarize & record feedback to be returned to RPLUS team



Early Morning Session

12

Guidance we gave the mentors:

- What were the strengths you found in it?
- What would you like them to think more about?
- Can you suggest a new community partner group for them?
- Can you suggest something to add a new layer to their



Try to get more than one student to engage with answering ...
“What do the rest of you think?”

Late Morning Collaborative Planning Session

13

Part #2 of the day focuses on the redevelopment of the 10 acre Chair Factory Property on the Haverstraw Waterfront just north of Emeline Park and the Harbors at Haverstraw. Students will work in mixed-school groups to plan collaboratively with peers across Rockland County.



CHAIR FACTORY SITE—EXISTING SHORELINE CONDITIONS

Village of Haverstraw, Rockland County, New York

Figure 1

DATE: JULY 27, 2018

Barton
& Loguidice

Their Focus For The Collaborative Planning Process

14

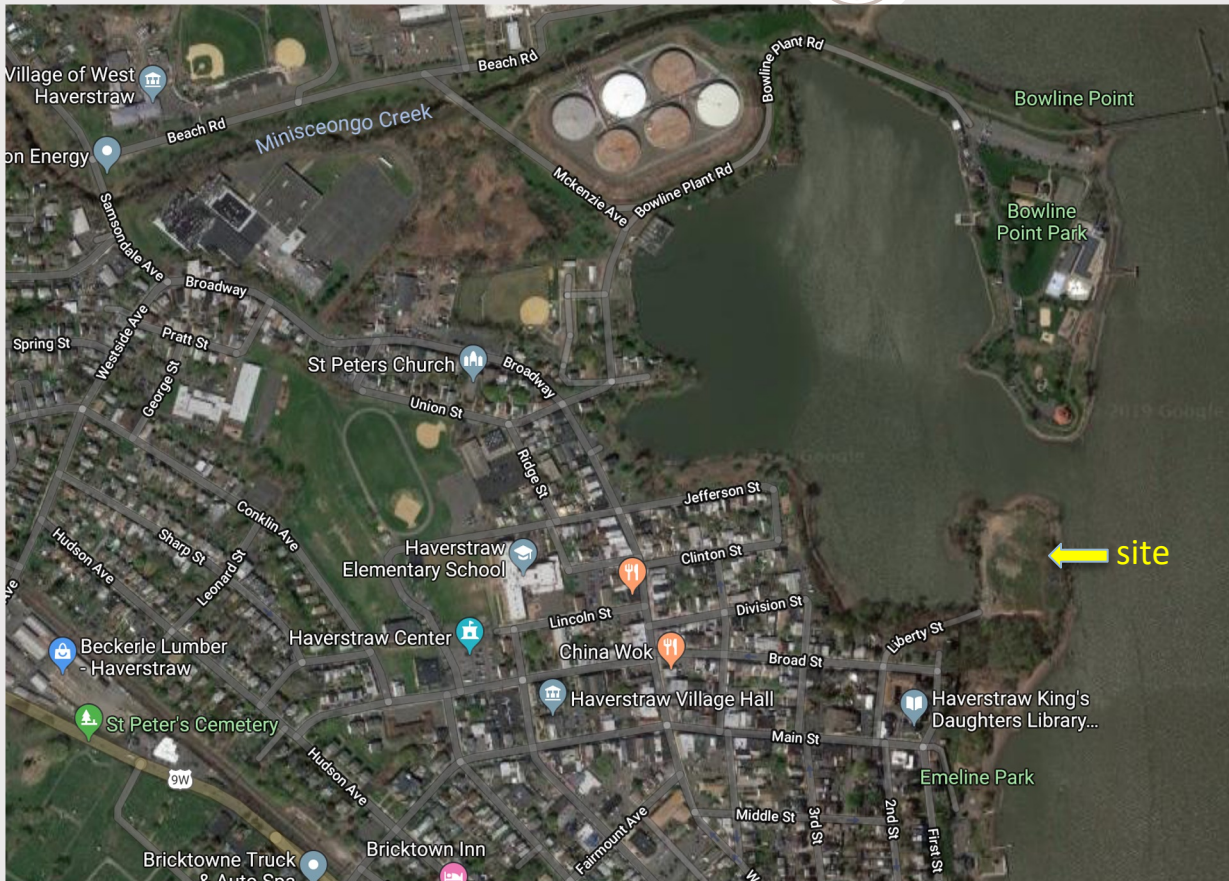


- How to collaborate while bringing in new ideas?
- How to enhance the wider community through our project?
- How the project will blend & connect to the community?



We will Provide an Orientation to the Chair Factory Site in the Village of Haverstraw

15



Redevelopment of the 10 acre Chair Factory Property on the Haverstraw Waterfront just north of Emeline Park and the Harbors at Haverstraw. Students will work in groups to consider the plan.

The Symposium – Collaborative Planning Session

16

- Start them talking - Ice Breaker – As a team “We aim to sustain, how are we doing? Individual, family, school, community!”
- Review the session goals
- Review project site key elements
- As a group identify what community strengths they can build on and weakness you might want to address at this site
- Review the supplies available with the group to help them with the planning. (Spelled out on next slide)
- Consider as you plan what stakeholders could be partners?

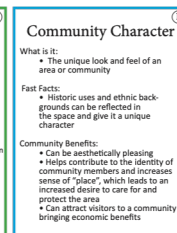
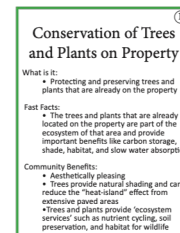


Part #2- Collaborative Planning Materials

17

SUPPLIES YOU WILL HAVE

- Large site map to draw on
- Planning cards – these are NOT intended to stifle their thinking but to encourage them to think about the pieces we have discussed in class
- You have sticky notes for jotting ideas and notes and locating them on the map until ready to be incorporated
- Pencils for planning & permanent colored marker pens to draw on the map when ready



A kit of Props as planning tools- Small items to help with visualizing...like small wood buildings, colored poker chips & yarn to spatially lay out ideas while planning features like roads, water features, larger green areas, outside gathering spaces.

Part #2- Collaborative Planning Forms

18

FORMS YOU WILL HAVE

- Cost/Benefit sheet can be used with ideas to help them think about trade offs
- Bulleted summary sheet on the project site
- A map for the site
- A guide to jot down wrap up notes for the student presenters



GROUP ID _____

ROCKLAND PLUS
Visit 2 Classroom Prep Project Notes

- Many of the choices that your plan will include are NOT choices that are being made by communities and builders today.
 - Why do you think this is?
 - Can your group identify ways that will improve our current process?
- For your plan complete a quick Cost Benefit Analysis, recording your considerations below. Every decision has a cost that must be weighed against the benefit. Costs are not always monetary, and sometimes even the true monetary cost can be hidden.
 - Consider the social trade-offs, what groups will benefit, how can you gather their support, what groups might lose, and can your plan be adjusted to address this?

Selected Item	Cost not specifically \$ for this Selection	Actual \$'s - \$ to \$\$\$\$\$	Benefit of this Selection

ROCKLAND PLUS
FINAL WRAP UP

S.E.E. this project – Thinking of how transit can support the Social, Economic and Environmental Needs of Sustainable Planning...



1. Did you think about how to improve people movement/transit?



2. List 3 highlights from your project. How does your proposed project address existing weaknesses while drawing from the strengths of the community – to become the "heart" of the surrounding Community?

3. Is there one suggestion your mentors offered that really helped improve your project?

MENTOR MINUTE

Their focus for the Chair Factory

19

Their goal will be to:

Identify **community** strengths & challenges

Identify **site** strengths and challenges

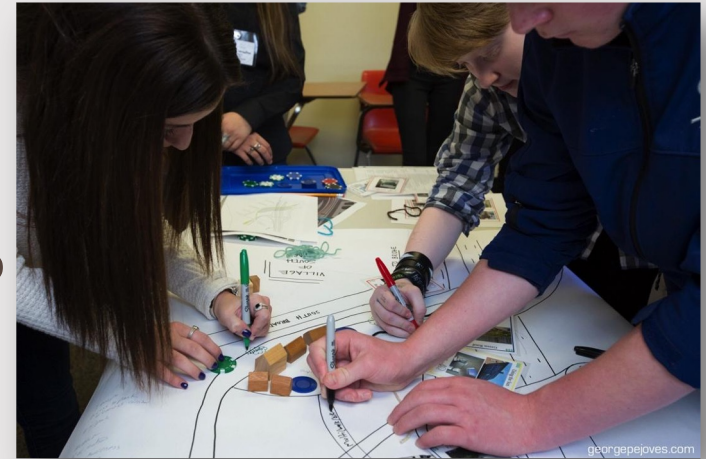
Consider **waterfront development** approaches to address issues of storm surge and sea level rise

How can the project **build connections** to the downtown, Harbors, Ferry & Emeline Park

Consider **community partners & businesses** to engage with on proposed usage

How can the project **address needs of the community?** and **enhance the wider community?**

Identify Sustainable and Climate Smart features that could be emphasized or added to the plan?



Day Ends With Final Student Presentations

20



GeorgePejoves.com

Highlight in the **TWO** minute student presentations

21

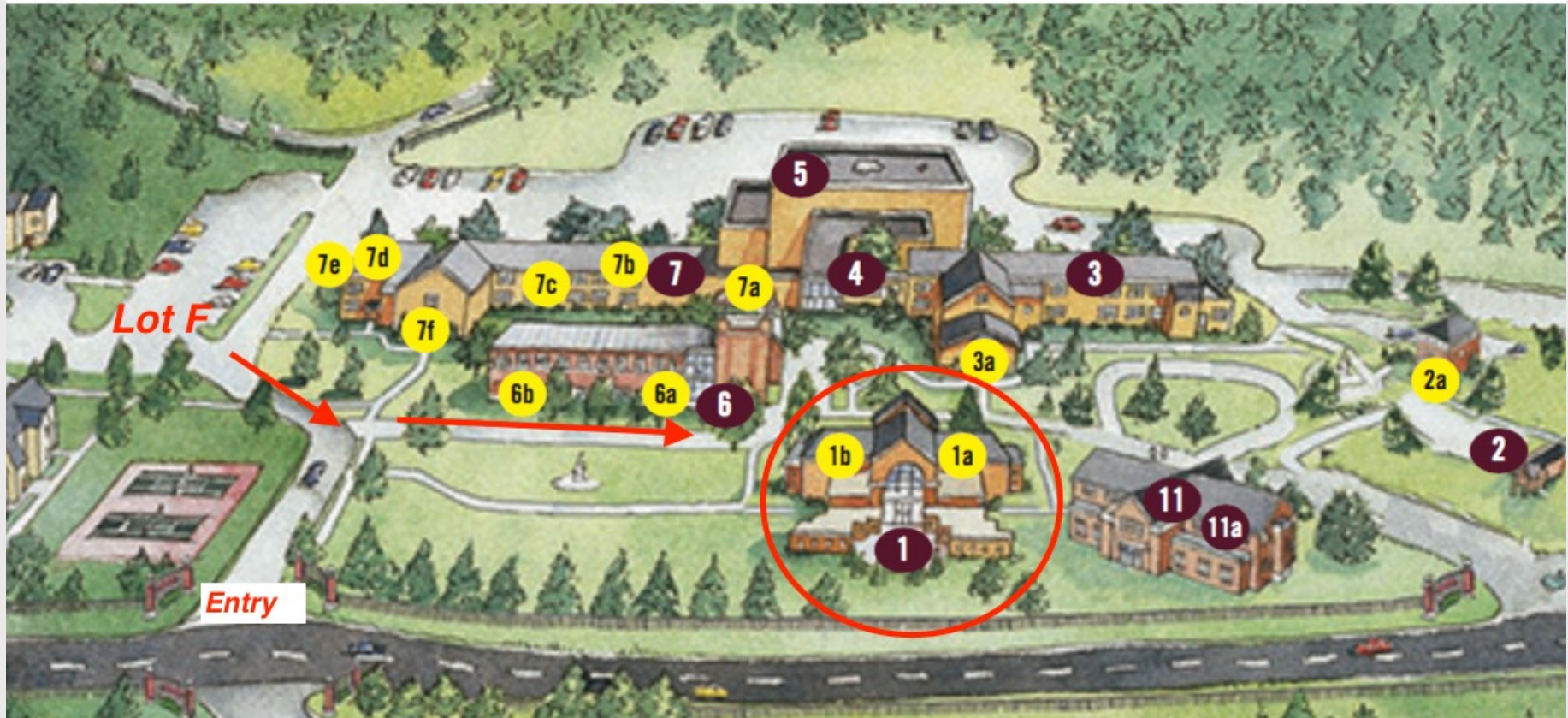
1. Did you think about how to improve people movement/transit?
2. List 3 highlights or key considerations from your project plan
3. Name one thing your mentor suggested that really enhanced your project

Time is really tight for these presentations so please emphasize this to the students. Decide who is going to speak and what they want to say. If they can highlight things not already mentioned that is preferred.



St. Thomas Aquinas College Campus Map

22



- Parking will be in Lot F
- Follow the arrows to walk over to Romano Student Alumni Center
- We will be in Romano to start – building 1b on the map

Logistics for the Day- Everything moves quickly!

23

- Facilitator check in 8:15-8:30 AM
 - 8:30-8:50 - overall introductions to the day the schools, mentors & facilitators
 - 9:10-9:40 - Local site presentations by individual schools
 - 9:55-10:15 - Grab a snack & find a seat for the IRG orientation piece
 - 10:20-10:40 - Introduction to the Collaborative Mapping Site – IRG
 - 10:50-Noon - Collaborative Mapping
-
- 12:10-12:40 - Lunch
 - 12:45-1:20 - 2 minute Team Presentations
 - 1:20 PM Wrap up
 - 1:30 PM Dismissal

Rockland P.L.U.S. 2022 is a collaborative partnership

24

1. Keep Rockland Beautiful
2. Lamont-Doherty Earth Observatory of Columbia University
3. Rockland Conservation & Service Corps
4. Rockland County Soil & Water Conservation District
5. Saint Thomas Aquinas College

Thank You Sponsors!



The Henry & Grace
Doherty Charitable
Foundation Inc.

M & T Charitable
Foundation



Rockland Municipal
Planning Federation