

MENTOR GUIDE TO ROCKLAND PLANNING LAND USE WITH STUDENTS

1

PROGRAM GOAL: For High School Students throughout Rockland County to be introduced to:

- The power of land use planning in shaping a community for all ages,
- Their opportunities as young adults to be part of local planning,
- The importance of sustainable & climate smart planning for our communities
- Range of career opportunities that intersect planning

Mentor Call 3/22/23 10:00 AM OR 3/29/23 2:00 PM
Program is 3/31/23 at St. Thomas Aquinas College

Mentor's Role Rockland PLUS Program

2

Your bring your experience in both career and life, into the planning activities with the HS students.

- **Introduce yourself**, and briefly your work, to provide context and expand career opportunities for them.
- **Student are presenting to you!** They are enthusiastic and creative in how they approach things so the focus is on hearing their ideas. They are excited (and nervous) to present. Consider how their ideas or parts of their ideas might benefit the space.
- **Offer feedback with a light & positive approach!** Please balance all the realities of your world with the new approaches they suggest, in considering how their ideas, or parts of their ideas, might benefit the space.
- **Open discussion by encouraging a dialogue.** Offer suggestions in a positive way to elicit a discussion. 'I wonder if you considered? What if you tried? ...etc.'

Our 2023 Event Flow

3

- 1. WE WILL BE IN PERSON!** We will be at STAC for the first time since 2019 and we are all excited to be able to gather again in person.
- 2. PART 1: STUDENTS WILL WORK IN SCHOOL TEAMS TO PRESENT ON A LOCAL SITE. THIS WILL BE IN 'GOOGLE EARTH PROJECT'.** The mentors will work with one school for this part of the day.
 1. The students have developed a customized virtual project about a local site in their community to share with you.
 2. There will be 2 mentors, 1 facilitator & possibly a teacher and/or undergraduate assistant facilitator from STAC in the room for each school. The facilitator will oversee things and will also add their ideas and feedback.
- 3. PART 2: STUDENTS WILL BE PLACED IN MIXED SCHOOL TEAMS TO ADDRESS THE HAVERSTRAW CHAIR FACTORY SITE.** At the Symposium the students will be provided a summary of the redevelopment plan for this site, part of the Haverstraw Revitalization project. Students will focus on actions that build a balanced, sustainable plan centering on climate smart practices.

The Student Side of the Rockland PLUS Program

4

- In 2023 we have worked with 17 classes with 293 students in 11 high schools in Rockland County.
- The Students received three classroom visits to lay the groundwork. Each visit contained background content & an activity putting it into practice:
 - Visit #1 conceptually what creates a sustainable community
 - Visit #2 they assessed strengths & weaknesses of their Town/Village/Community
 - Visit #3 they focused on a local project in their community and created a sustainable/climate smart plan
- Part four is the culmination in a Symposium with a subset selected from each class. This year we will be back in person at St. Thomas Aquinas College (STAC)!
- We expect ~170 high school students.

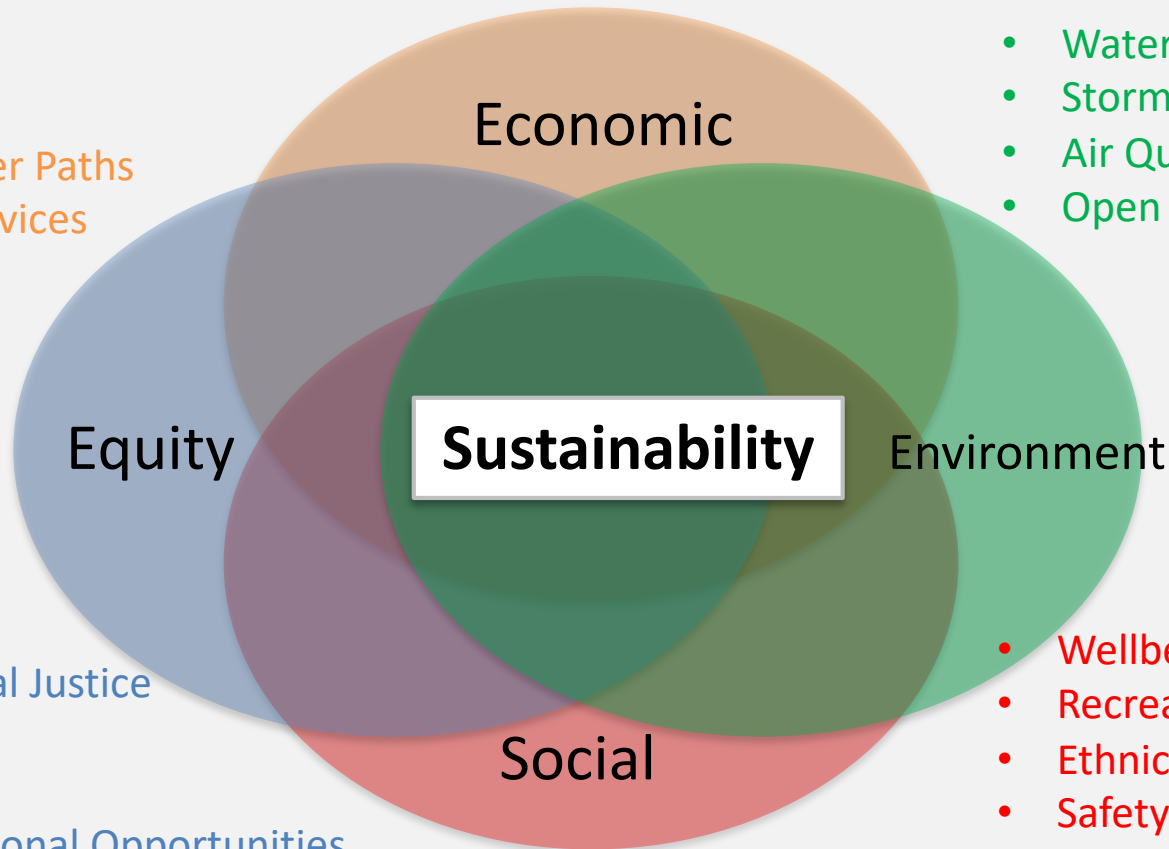
Visit #1: We introduced what is meant by a sustainably planned community

5

Sustainable Community Planning means bringing balance to issues locally and regionally considering Social, Economic, Environmental and Equitable factors

- Housing
- Transportation
- Jobs with Career Paths
- Diversity of Services

- Water Resources
- Storm Water
- Air Quality
- Open Space & Wildlife



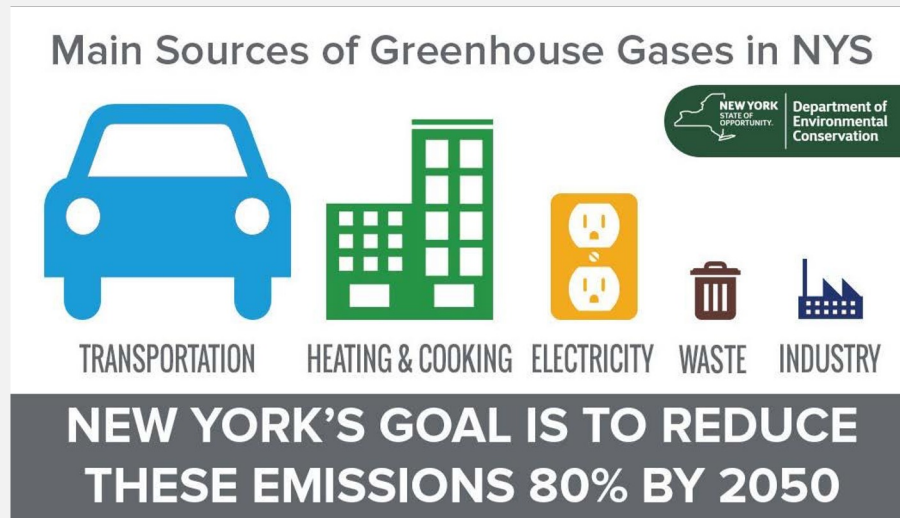
- Environmental Justice
- Cohesion
- Welfare
- Job & Educational Opportunities

- Wellbeing
- Recreation
- Ethnic Character
- Safety
- Community Voice

We emphasized New York State's leadership to take action in mitigating greenhouse gases



New York State is experiencing higher climate impacts than the national average. In response they have set some very aggressive energy reduction targets!



Reduce 40% by 2030 and 80 % by 2050 from 1990 GHG emission levels.

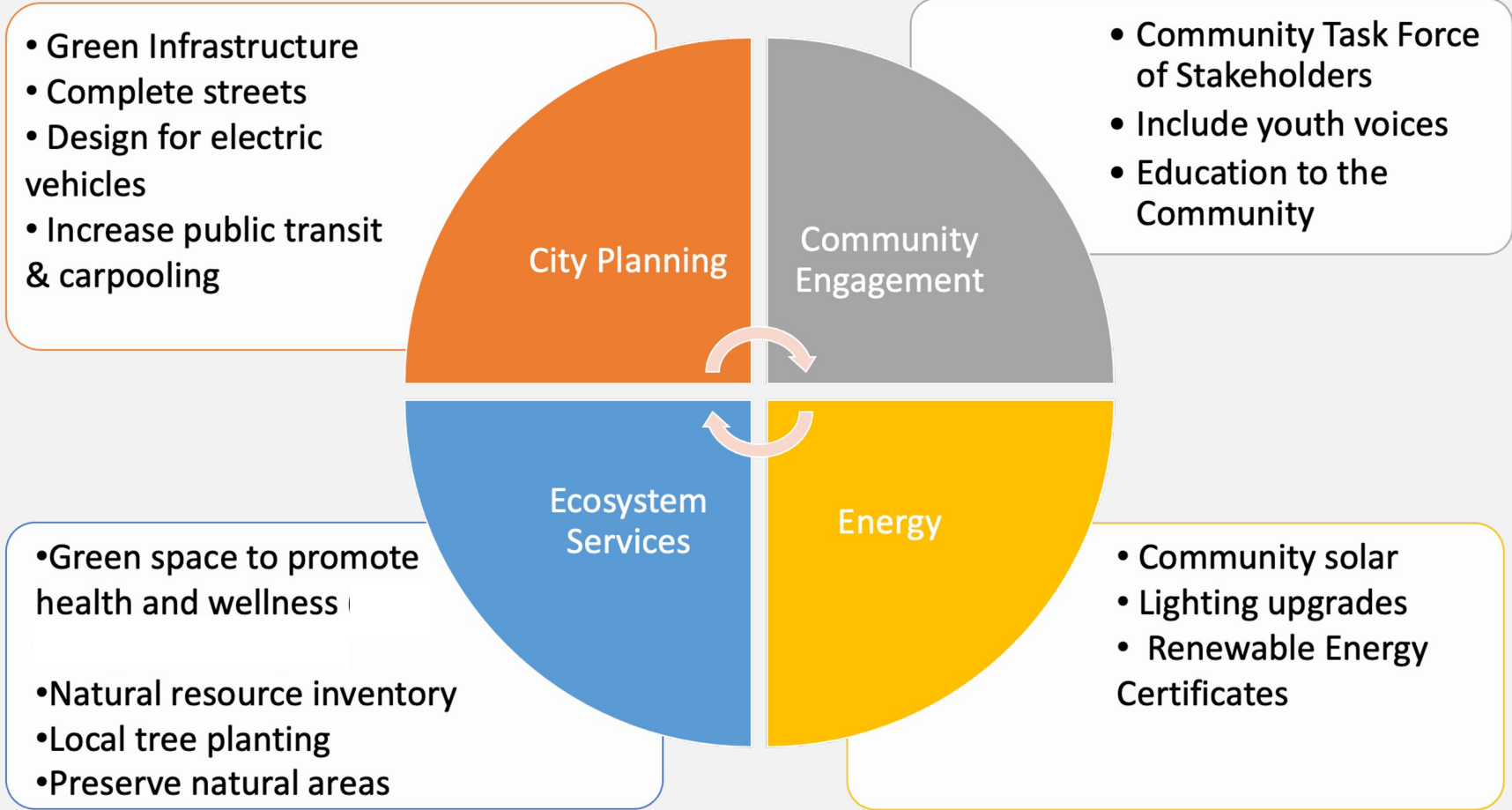
EVERY COMMUNITY MUST HELP...BUT HOW?

HOW? We introduced....Climate Smart Communities



Visit #2: Mitigation through becoming a 'Climate Smart Community'

Examples of a "Climate Smart" Community (CSC):



Also introduced **Adaptations** to Climate Change Impacts: Local Examples of Green Infrastructure



Nyack Memorial Park
Permeable pavement



Rockland County Country Club
- Green Roof



Bowline Point Park, Haverstraw -
Rain Garden



Valley Cottage Library
- Vegetated swales



Home for Heroes, Pearl River-
Bio-Retention area



Tappan Zee High School -
multiple approaches

Visit #3: Students planned their google earth project




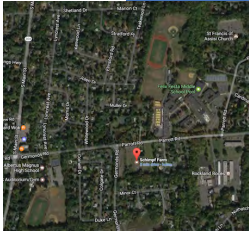
Sample from 2017

Each class has a local site to re-envision – all the site write ups are posted on the [website](https://www.ideo.columbia.edu/edu/plus/Rockland.html)

10

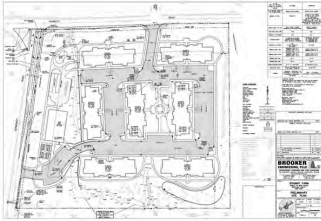
Considering SEEing the community - social, economic and environmental issues...


SCHIMPF FARM, WEST NYACK



LOCATION

An 8.5 acre parcel located at 13 Parrott Rd. West Nyack at the corner of Parrott and Germonds Rd., across the road from Felix Festa Middle School, adjacent to Rockland BOCES, and just down the road from Albertus Magnus High School. The Demarest Kill stream runs along the edge of the property and the site contains federally regulated wetlands.




HISTORY

Farming
When Rockland County was founded farming was an important part of the economy but by 1950, fewer than 150 farms remained, and today only a handful operate. The majority of the farmland in Rockland has been turned into houses starting with a major growth spurt in the 1950s when over 1000 homes were built each year. The opening of the Tappan Zee Bridge in 1955 and the completion of the Palisades Interstate Parkway and the New York State Thruway during the same time was a large part of this change.

Schimpf
The Schimpf's Farm Garden and Landscape Center was a family owned business run by Thomas D. Schimpf until he died in 2011. Thomas was a long time member of the Rockland County Farm Bureau serving 15 years as the president and another 15 years on its board of directors. He supported local farming through many efforts and spent countless hours on education of the public. He understood that farming in suburbia involved educating the public about what farmers do and their role and benefit in a community. Donations were requested to NYS Farm Bureau education funds upon his death, an organization that works hard to expand public knowledge about farming.

PROPOSAL

The proposal calls for the construction of 127 units of senior housing, ~ half one bedroom and the other half two bedroom, built in seven buildings that are 3 stories high. There will be 169 parking spaces. There is a plan to build a 5,500 sq ft clubhouse, putting green, outdoor trails and sitting areas. The stream will continue to meander along the edge of the property. Plans shown above from Booker Engineering, PLLC.



- Spring Valley Train Station TOD (Rampo)
- Avon Site (Suffern)
- Riverspace (Nyack)
- Tidewater Project (Nyack)
- Sain Building (North Clarkstown)
- Buckley Farm (North Clarkstown)
- P-Tech Campus (P Tech)
- Albertus Campus (Albertus)
- Barr Laboratories (N. Rockland)
- Eagle Bay (N. Rockland)
- Letchworth Village (N. Rockland)
- HNA Facility (Tappan Zee)
- Memorial Park (Spring Valley)
- Verizon Site (Pearl River)
- Central Ave. Fields (Pearl River)

<https://www.ideo.columbia.edu/edu/plus/Rockland.html>

Mentors' Role During the Day

11

As mentors each of you brings a unique quality to share, through your role in the community. Together you provide a range of stakeholders.



Local Site: Your role during this presentation by students is to listen to them and give feedback, with a light touch, on their plans. Encourage a dialog by posing questions and encouraging input and thoughts from the students. They have been encouraged to think broadly and creatively to build a project that enhances their community.

The Symposium - Early Morning Session

12

Consider discussing:

- What were the strengths you found in it?
- What would you like them to think more about?
- Can you suggest a new community partner group for them?
- Can you suggest something to add a new layer to their plan?



There is a facilitator with each group to focus on group dynamics but you can also try to broadly engage the students with questions like...What do the rest of you think?”

The Symposium –Late Morning Session

13

Part #2 of the day focuses on the redevelopment of the 10 acre Chair Factory Property on the Haverstraw Waterfront just north of Emeline Park and the Harbors at Haverstraw. Students will work in mixed-school groups to plan collaboratively with peers across Rockland County.



CHAIR FACTORY SITE—EXISTING SHORELINE CONDITIONS

Village of Haverstraw, Rockland County, New York

Figure 1

DATE: JULY 27, 2018

Barton
& Loguidice

Their Focus For The Collaborative Planning Process

14

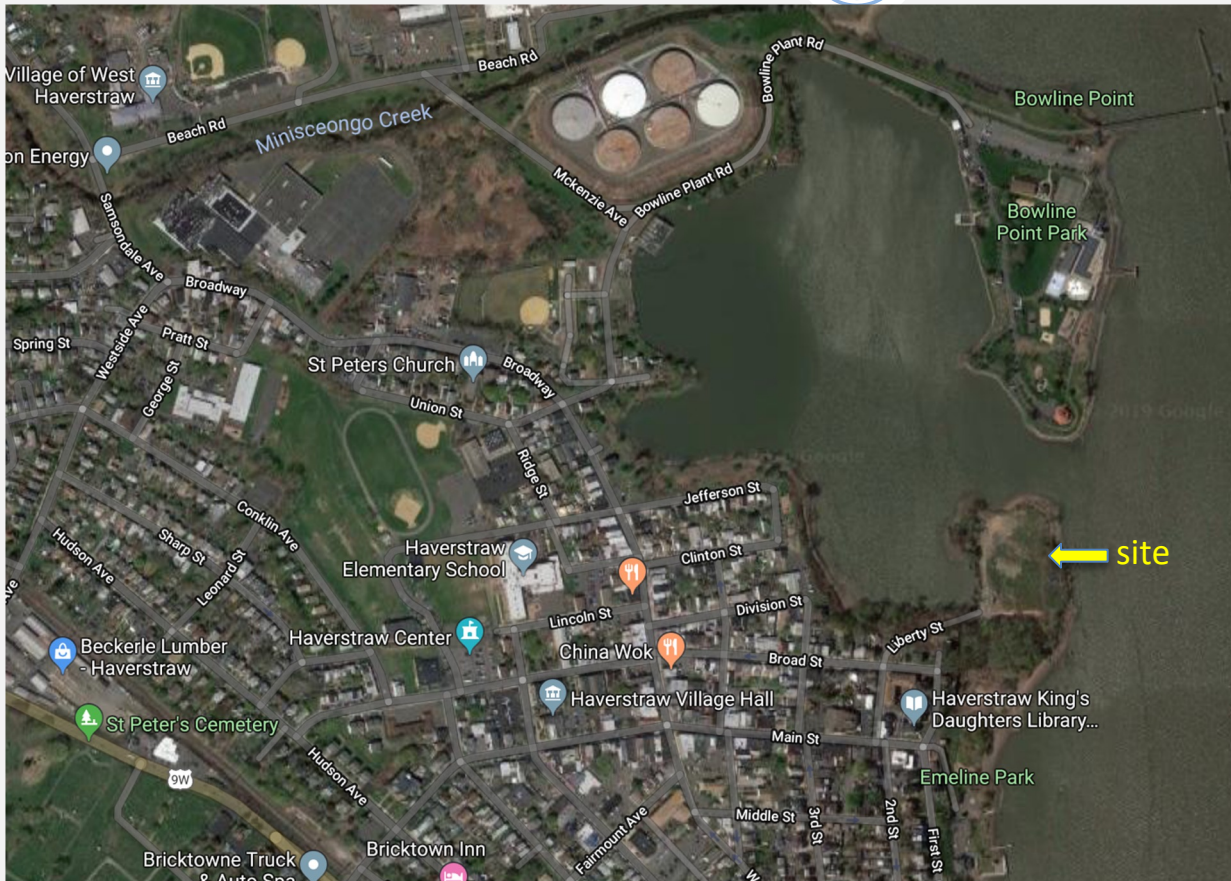


- How to collaborate while bringing in new ideas?
- How to enhance the wider community through our project?
- How the project will blend & connect to the community?



We will Provide an Orientation to the Chair Factory Site in the Village of Haverstraw

15



Redevelopment of the 10 acre Chair Factory Property on the Haverstraw Waterfront just north of Emeline Park and the Harbors at Haverstraw. Students will work in groups to consider the plan.

Their focus for the Chair Factory

16

Their goal will be to:

Identify **community** strengths & challenges

Identify **site** strengths and challenges

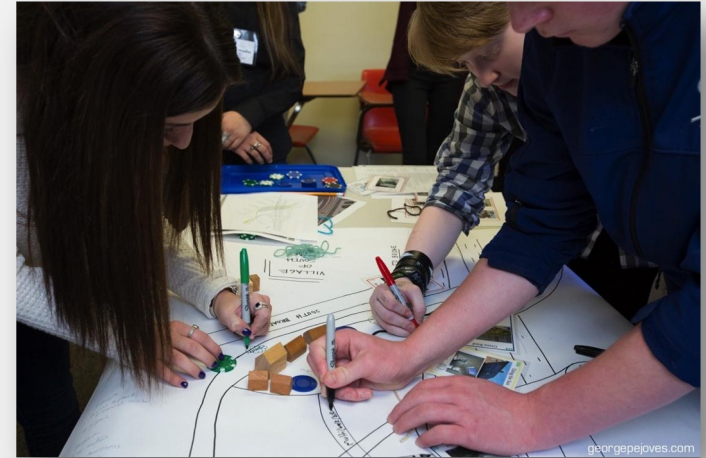
Consider waterfront development approaches to address issues of storm surge and sea level rise

How can the project build connections to the downtown, Harbors, Ferry & Emeline Park

Consider community partners to engage with on proposed usage

How can the project address needs of the community? and enhance the wider community?

Identify Sustainable and Climate Smart features that could be emphasized or added to the plan?

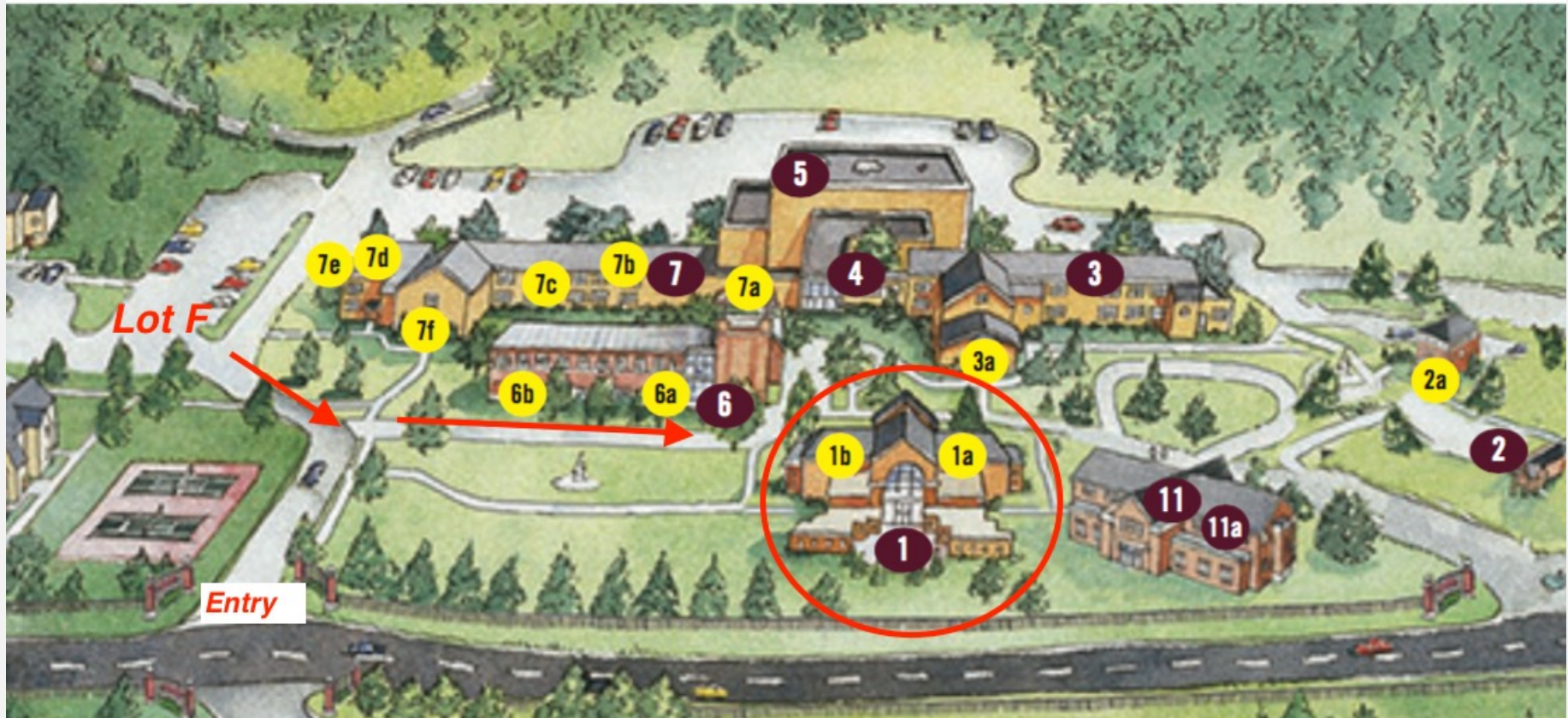


Culminate with final student presentations



St. Thomas Aquinas College Campus Map

18



- Parking will be in Lot F
- Follow the arrows to walk over to Romano Student Alumni Center
- We will be in Romano to start – building 1b on the map

Logistics for the Day- Everything moves quickly!

19

- Mentor check in 8:15-8:30 AM
- 8:30-8:50 - overall introductions to the day the schools, mentors & facilitators
- 9:10-9:40 - Local site presentations by individual schools
- 9:55-10:15 - Grab a snack & find a seat for the Chair Factory orientation
- 10:20-10:40 - Introduction to the Collaborative Mapping Site
- 10:50-Noon - Collaborative Mapping

We would love you to stay for lunch & until dismissal but understand if you can not!

- 12:10-12:40 - Lunch
- 12:45-1:20 - 2 minute Team Presentations
- 1:20 PM Wrap up
- 1:30 PM Dismissal

Rockland P.L.U.S. 2022 is a collaborative partnership

20

1. Keep Rockland Beautiful
2. Lamont-Doherty Earth Observatory of Columbia University
3. Rockland Conservation & Service Corps
4. Rockland County Soil & Water Conservation District
5. Saint Thomas Aquinas College

Thank You Sponsors!



The Henry & Grace
Doherty Charitable
Foundation Inc.

M & T Charitable
Foundation



Rockland Municipal
Planning Federation