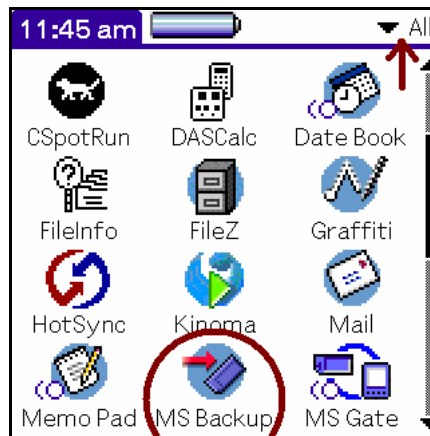


Restoring A Sony Clie From The Memory Stick 2003.270

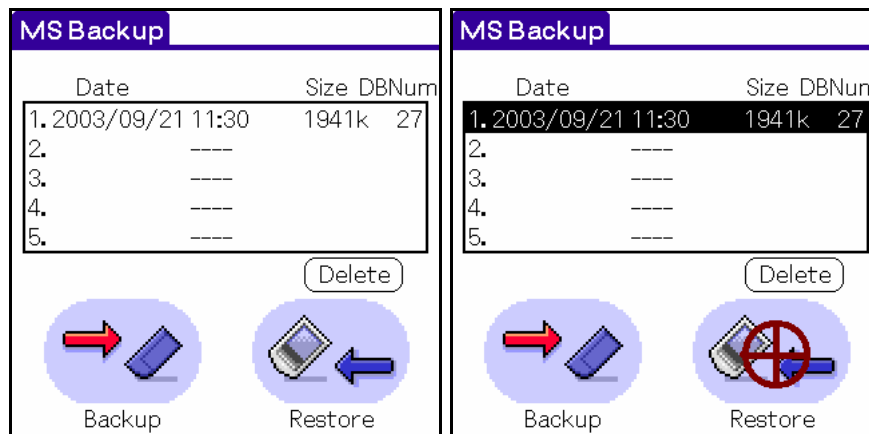
Use this procedure to restore all of the program files that were on a Clie when it was first set up. All of the files should be in a backup set and on the Memory Stick card in each Sony Clie.

This procedure may be necessary when the Clie memory has been lost because, for example, the battery has been drained.

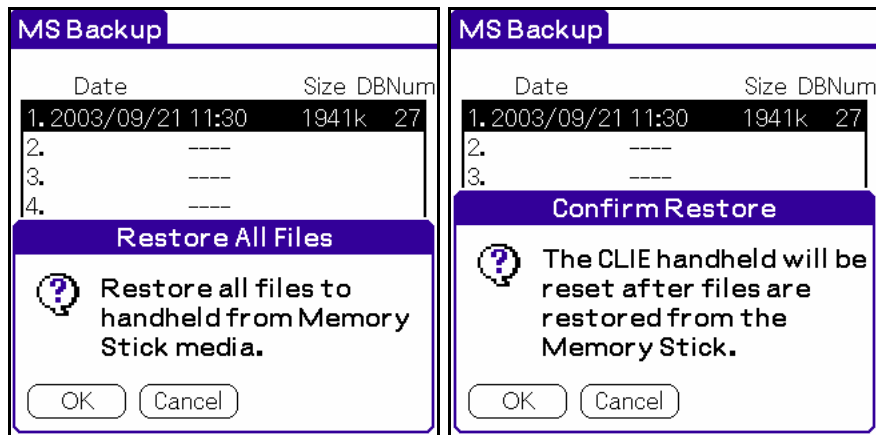
1. Check that the Launcher category setting in the upper right-hand corner of the display is set to "All" and find the icon for the application MSBackup. Start the application by tapping on the icon.



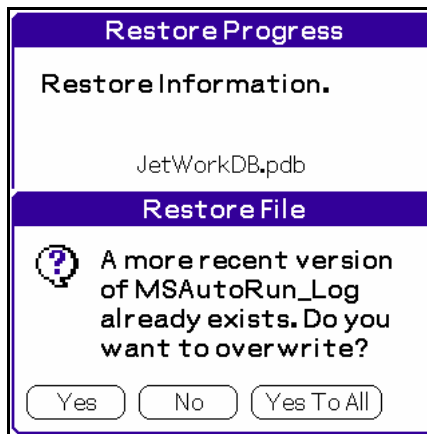
2. This will bring up the display below showing the backed up file set. The Date, Size and DBNum values will probably be different from the ones below. Tap on the backup set to select it and then tap the Restore button.



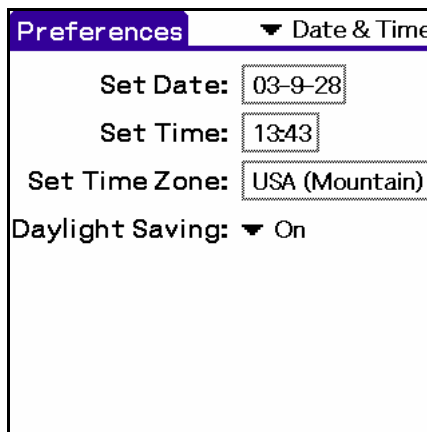
3. Tap the OK button when the dialog boxes below appear.



4. A Restore Progress display will come up and a progress bar will displayed as the programs are restored. A dialog box such as the one below will eventually show up. Tap the "Yes To All" button when it does.



5. When the restoration is finished the Clie will reset itself and stop on some panel of the Preferences application. Tap the Applications icon (the "house" icon to the left of the Grafitti area) to get back to the Launcher display.



(END)