

"Outdoor writing products for outdoor writing people."



RECYCLED / RECYCLABLE

This cover is made of 100%  
post-consumer recycled material.

"Rite in the Rain" - A unique All-Weather Writing paper created to shed water and enhance the written image. It is widely used throughout the world for recording critical field data in all kinds of weather.

Available in a variety of standard and custom printed case-bound field books, loose leaf, spiral and stapled notebooks, multi-copy sets and copier paper.

For best results, use a pencil or an all-weather pen.

a product of

**J. L. DARLING CORPORATION**

Tacoma, WA 98424-1017 USA  
(253) 922-5000 • FAX (253) 922-5300  
[www.RiteintheRain.com](http://www.RiteintheRain.com)

ISBN 1-932149-89-9

US PAT NO. 6,863,940



6 32281 39311 5



*"Rite in the Rain"*  
ALL-WEATHER  
JOURNAL  
No. 393

Bill Menke

QMS #1

Maine - May 19, 2012 - QMIII  
to May 20, 2012 Fieldtrip 12A

2:30 PM, LDEO, 66524.3 mi

pickup egret

3:05 PM, 66530 mi  
Picked up Vcdm from  
Fort Lee

6:40 PM 66701 mi

Rest stop on Mass Pike  
for a snack

9:15 PM 66830 mi

Kennebunk ME rest area  
Gas & snack

10:30 PM 66893.5 mi

ARRIVE HARPSWELL, ME  
Cottage 10, Auburn-Harpswell Assoc

May 20, 2012

7:30 AM in Harpswell

breakfast of pancakes  
adjust instruments

12:00 66909.5  
Sear, Lowes at Cooks Corner,  
Walmart, Subway, Hunafords  
Lunch at Subway  
2:00 66926.3  
Back at Cottage 10, Harpswell

(5/21)  
7:11 Left Harpswell 66926.3

8:15 Maine St. Offices 66976.7  
Meeting with Bob Maroney  
and Will Harris

9:45 Bagel Maine 66978.2  
Breakfast Augusta

11:00 Lowes Augusta 66981.4  
Concrete, rope  
Rock Lift Strike Ship  
contact with gneiss, granite

1:45 Kahtudyn overlook on 595  
took photos

1:50 Irving Gas 67374.1  
Clock Sherman ME

"sign 'welcome to Patten'  
on Rt 11

Theriault Flies &  
Tying Material  
&  
Rocks & Gems

2:30 Shin Pond Village  
67156.6  
TENT site T2

---

4:30 Hay Lake Ranger Sta  
ALSO HAY LAKE

5:30 Shin Pond village  
67186.5 Tent site T9  
dinner steak, potatoes, onions  
breakfast egg sandwiches

(5-22) Shin Pond  
8:00 Breakfast Egg Sandwiches

9:30 Drive to Hay Lake.  
Assemble Solar Panel Stand

11:30 Back at Skin Pond  
Snack, use internet  
12:45 67270.8  
G.M. Gate  
Talk to Rita, at gatehouse  
view area: work yard  
green shed  
3:30 67328.2 Island Falls  
meet with Joe Mints, Forest Serv.

4:00 67329.3 Supermarket in Island Falls

7:00 67360.3 Hay Lake  
Done laying concrete  
light rain

8:00 - 67370.8 Skin Pond  
Back at Campground  
Dinner Mac & Cheese

(5/23) Skin Pond 67370.8  
Breakfast M. Hirs coffee  
Light intermittent rain

9:15 Ashland 67428.2  
Meet w/ Al Cowparthwaite  
N Maine Woods 6

Chung Sing wand  
Presque Isle geologist

10:30 67439.5 Portage  
Centennial Pavilion  
good place for lecture

11:30 67456.5 Moose  
Pt Camp

4 PM 67485.5  
Ashland Hardware Store

8 PM 67563.9 Skin Pond  
Dinner spaghetti & sauce  
w/ pepperoni

(5/24) CAM  
Skin Pond 67563.9  
pack eqt in red garage

8:30 Ashland buy breakfast  
also  
Moose, owl, pheasant

9:30 67650.4 Moose Pt Camp  
Install seismic sta  
on rock ledge

12:00 Lunch - chicken soup  
with folks at lodge  
Hummingbirds

4:50 Finish up at Moose  
Pt Camp.

7:20 Shen Pond Village  
Ate chicken sand.  
w/ onion rings in restaurant.

5/25 Shen Pond Village  
67735.8 Breakfast  
9 AM of pancakes. Settled bill.

9 AM Hay Lake 67748.0  
Will Barnum ranger  
install seismometer

1:13 Rest Area 67796.7  
on I95

3:45 Service plaza Gardiner  
67939.0 ME  
(952295 split)

7:00 Mass Pike - Sturbridge Svc Area  
68134.0 Pizza

9:57 PM RT Lee  
get gas, drop off Vaden  
68290.8

10:26 68307.6 Tappan NY

June 4, 2012, Fieldtrip 12B

10 AM Tappan NY 68819.9

6:18 Kennebunk Serv. Plaza 69115.7  
8:00 Hampswell

June 5, 2012

7 AM Hampswell 69179.3

8 AM Brunswick 69199.4  
stopped McDonnells

10:20 AM Bangor 69310.2  
Home Depot 186

1 PM Matthias 69405

6:45 + Subway  
1:30 PM Mud Landing on Rocky Lake  
69411.0 Kayak  
Bald eagles

4:77 Crawford Rest Area 69451.4

6:22 PM 69490.4  
Hannafords supermarket  
Matthias

7:00 PM Rocky Lake, Mud Lnd  
69506.7 Dinner Keilbase

June 6 8 AM Rocky Lake, Mud Lnd  
69506.7 Breakfast pancakes

10:49 Baileyville Circle K  
gas & coffee 69538.8

11:42 Grand Lake Stream  
69564.8  
Kayak to Hardwood Is  
Sandwich at Pine Tree Store  
Grand Lakes Stream Historic Museum  
Millford Rd  
Sam Newman 796-7996  
Inty

2:27 Big Lake on dirt Rd  
69589.2

3:02 Rt 6 intersection 69901.2

3:28 Grand Lake Stream, S. Road  
69631.3 sign  
Sign 10 mi to stud mill rd

Roger Milligan Topfield  
Regional Range  
Rd Sign Down east Lakes Land Trust  
207 796 2100

www.downtownlakes.org  
4:17 69642.4 S end Composite  
S. Matthias Lake Dept Cons.

4:48 69653.0 21.6 mi  
at HW 9

5:19 69676.2 10.5 from int

6:30 Mud Landing again  
dinner turkey & potato  
salad

June 7 Mud Landing.  
Breakfast Bread & jelly

8:50 Jonesboro Ranger Station  
69732.0

11:23 Wesley Ranger Sta  
Sen 174 69763.4 Install  
Tanner 2056 Seism.

4:10 PM 69790.3 Matthias  
Lumber Yd, Gas Sta

4:40 Wesley  
deliver wood 69811.0  
check sta

174/2056

Log Landing

6:30 69825.3 Camping Area  
along Rd 51. Rabbits  
Dinner egg & quiche. Matthias R.

June 8 7 AM Log Landing Camp  
Site

Breakfast: egg sandwich  
Sun! 69825.6

8:30 Beddington Lake  
off Rt 193 dirt rd by white barn  
and blue house 69854.1

Kayak

12:48 PM Gardiner Sul Plaza I95  
69980.7 Lunch

4 PM Harpswell. Clean up! Dinner

June 9 6 AM Harpswell  
Clean up, Break-fast  
Steak & Noodles

9:15 Brunswick 70057.2  
GAS, COFFEE

1:52 Newport RI 70287.9  
Lunch, Dinner

June 10 Newport RI 5:50 AM

7:44 Service Plaza on I95  
70382.2 Gas, Breakfast

9:09 AM PALMADDES NY 70457.6

Fieldtrip 12C

July 23, 2012 Tappan NY  
73579.1 start 1 PM

3:31 73700.8 Citygo Sta, Tolland Ct

4:15 73727.7 Mass Pike Sturbridge  
buy snack

7:29 73911.8 Brunswick ME  
snack circle K

8:15 Harpswell, Seahaven Cottage  
73927.9

July 24, 2012

7:35 Harpswell, Seahaven Ctyg  
73927.9

8:00 AM Brunswick Shell Sta  
73941.5 Gas, Breakfast, coffee

10:30 Exit 186, Bangor  
Home Depot - supplies  
Hard to get on HWY, went S  
to previous exit & made U

12:20 PM IRVING Gas Sta  
RT 11 & RT 9W Lunch

1:30 PM Ashland Shell Sta Gas  
74201.9 Food Mart

253 Moose Pt Camp 74232.4

July 25 Moose Pt Camp 74232.4

Ashland, Credit Union, 74245.0

10:30 AM Moose Pt Camp 74288.3

Fish Lake Seismic Station. Site  
undisturbed. Big ant nest in vault.  
Battery 12.73V. Download 16 GB  
Flashcard to disk pack. 3 directories  
201205, ... 06, ... 07. Used 2,138,275,890

Bytes. Free 12.96GB. Used found  
around Inst Box - ineffective.  
Seismometer level. Display: N  
might be a little noisy. Stomp  
test OK. Taurus: Green Light,  
status OK. Waited till screen  
went blank, then closed up  
site. Added a few wedged plastic  
bags for insulation. Darkened  
writing on lid. Finish 12:10 PM

4:57 Ashland Shell Sta 74318.3

6<sup>14</sup> Shin Pond Village 74369.7  
Tent site T9.

July 26, 2012 Shin Pond Village  
74369.9

8:55 AM Hay Lake Seismic Sta  
74380.3. Site undisturbed.  
Opened recorder, green lt blinking.  
Copied flash card to Disk Pack.  
Dir 201205, 201206, 201207.  
Card: 2,149,220,352 used 12.8 Free  
Battery 13.08V, Taurus 1473



STOMP test OK, horizontals  
still equilibrating as I left

12:30 Danton Th Golf Sta  
snack 74472.8

1:30 Princeton Irving Circle  
gas 74509.5

2:12 PM Wesley 74544.3  
Seismic Sta. Green light

on Taurus 2056. Copied Flash  
Card to Disk Pack. 1,768,292,352

Bytes used, 13.2 GB free.  
Restarted recorder. Status OK.  
stomp test ok. Left before  
horizontals settled. 2:42 PM

5:40 Augusta Service Plaza 74693.9  
Coffee

6:15 Brunswick Amato sandwich

7:10 Harpswell 74735.6

July 27, 2012 Harpswell 74735.6  
9:51

10:20 74749.9 Brunswick Gas  
& Coffee

2:00 Stanbridge Ma, Lunch at Roy  
Rodgers 74936.7

5:46 PM 75078.8 Tappan NY

Aug 9 2012 10 AM Field Trip  
COM III-D

Aug 2, 2012 10 AM TAPPAN NY  
75612.9 start of trip.

11 AM Fort Lee NJ 75629.4  
Pickup Vladimir

12<sup>30</sup> 75694.0 Plattekill  
Jvc Area on NYS Thruway.  
Lunch

2<sup>50</sup> PM 75792.2 Clifton Pk  
rest area on Northway.

3:49 PM 75837.9 Ctgo Sta,  
Gas Exit 23 of Northway,

5:21 PM 75925.1 Valcour  
Rest stop on Northway

6:30 PM 75959.2  
Rest stop just north of border  
Picnic dinner, Keilbase & noodles

Hotel Champlain 76001.1 8 PM

Aug 10, 2012 76001.1 8 AM

9:30 AM 76012 VQAM

7:30 PM Take Fiona home  
with bicycle on roof  
76022.3 1101 Hache 1  
new int w/ christ. column.

Aug 11 2012 76032.7 Steve  
Hortons, Montreal, Breakfast

10 AM Home Depot 76054.1

12:45 PM VQAM Load Van  
plan meet at Fiona's at 9:30 AM  
76073.3

6:36 PM 76082.0 Back at  
Hotel Champlain after day  
loading van and taking a  
walk up to cross atop hill  
in Montreal. McGill M, Pointe  
Also IGA in Mtl By VQAM

8 PM Pizza near Hotel  
Gas at Shell Sta

Aug 12, 2012 76094.5  
8:45 leave Hotel

9:40 76104.0 Fiona's Hse  
Pickup

10:36 76151.3 RVs on HWY.

roulette.ca

campers  
10:52 76166.8 RONA

12:52 76250.5 Tim Horton  
just S of Quebec

76387.0

Callahan Tire

ICA

parking  
Lot

(5PM) 76393.8 Camping de la  
carriere

6<sup>30</sup> PM ? Picnic spot on  
fjord east of Chicoutimi  
on north side of fjord.

7<sup>30</sup> PM Comfort Inn  
check in rest of party

9<sup>42</sup> Camp ground for night  
76421.2

Aug 13, 2012

7 AM Gas Chicoutimi 76424.1

8<sup>30</sup> AM Comfort Inn 76429.8

9<sup>00</sup> AM UQAC 76431.9  
store 2 sets of stations  
confu with scientist 11

12:30 → 7:30

Farm Paradise

76472.8 successful  
install  
of QMSD

(First Canadian  
Site!)

16147 76515.4 Camping  
ground.

8<sup>20</sup> Comfort Inn Chicoutimi  
Shower, by supplies at  
Drug store, eat at Sports  
Pub just S. of Hotel

Aug 14, 2012. Camping de la  
Carriere. checkout 8:20

9<sup>30</sup> Comfort Inn pick up  
field team

10 AM gas sta Couche-Tard / Esso  
near Hotel 76523.1  
gased Truck, 700

12<sup>30</sup> Lunch along Rt 169  
overlooking Lac Saint Jean

3<sup>30</sup> Ashvapa mushon Reserve  
Road 203 off of 167  
76671.0, 9 miles from  
intersection, install seism. @M  
Vault in old sand pit 60  
mile post 23, across from  
lake

8<sup>00</sup> Hotel Nordre Chibougama  
76766.9 check in  
Eco Camping check in  
Dinner Romeo & Juliet Restaurant  
by The Hotel

Aug 15, 2012. Rain during night  
I rose at 7AM and drove to  
The Hotel 76773.1

12:30 PM 76893 site along  
Route de Nord where we  
set up a seismic sta @M70  
leave 5<sup>00</sup> PM. East side of  
Rd N of mile post 158.

Chibougama 77008.2  
Dinner Romeo & Juliet Laguna

Aug 16, 2012. 77008.2  
Chibougama EcoCamping  
Gassed Escape, bought wood  
at Roma Sunny Today,  
Mist on Lake

11<sup>30</sup> seismometer site 77105.2 @M60  
install recorder etc. <sup>n</sup> problem  
backup battery dead. This  
site an old sand quarry next  
to a small lake. Finish 2:57  
Some folks swim in lake.

5<sup>30</sup> PM Chibougama 77200.1  
Buy Food, Do Laundry, eat  
Romeo & Juliet's (Pizza). Sleep  
EcoCamping. Mite clear.

Aug 17, 2006 77206.7 parkup  
tent, drive north. Rise early,  
6 AM.

77302.0 9:55

Coffee in the rain

@ Rest stop "KM/32" on Rd N

12<sup>30</sup> Nimiscan Get Gas  
Wait till gas station opens  
after lunch.

3 PM intersection of Rt de North  
and James Bay Highway  
Rest Stop Halte de Passages.  
77-187./

4<sup>30</sup> 77544.9  
Routier 381 (James Bay Hwy)

Gas, walked up to sand quarry  
N of station

6:07 PM Intersection with  
Rd to Wemindji. Stop at  
picnic area briefly. 77630.5

7 PM House in Wemindji, white  
#17, Paint Hill Rd and  
SPRUCE  
celebrating for dinner

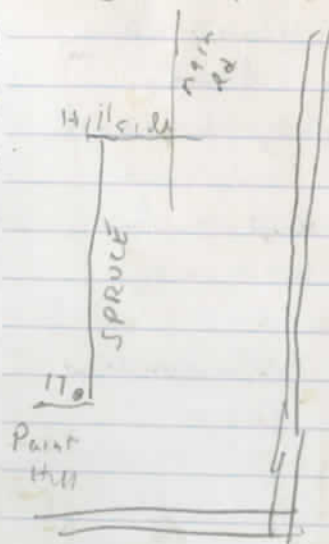
Aug 18, 2012.

Wemindji

77693.1

Breakfast of  
pancakes w/  
blueberries  
maple syrup.

instrument prep



11<sup>15</sup> Drive to polaris station

1:27 77731 Leave Polaris  
site. Site on granite ledge  
with pitcher plants. Swap  
seismometer. not optimistic

77772 Back in  
Wemindji. Dinner  
Catherine, Shepard Pie

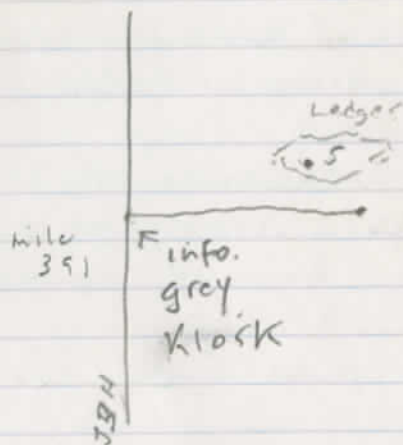
Visited well around town

most everything closed.  
Pass store - seems mostly  
empty, closed up. Walk down  
to bay, spartina flats  
taste water, slightly brackish.

Aug 19, 2012. Pickup and  
drive south from Wemindji.

77909.5 11 AM Eastmain  
River picture stop

77913.0 12<sup>30</sup> Rd off  
of James Bay Hwy. Install  
seismograph, km 391, QM 80



77923. Gus Sta 6<sup>30</sup> PM  
Setup toots field N of  
Station. Camp N of  
Bonfire

Aug 20, 2012. Breuck Camp.  
Breakfast in Cafeteria  
egg sandwich

9 AM 77930.7 check level  
of geophone, OK. at QM 80.

10:52 AM 78002 Rest stop at  
intersection of James Bay Hwy  
and Rd de Nord.

12<sup>20</sup> Rest stop East of Nimiscau  
steak, cheese wraps for lunch  
78077.6.

1 PM Nimiscau Gus Sta  
Pick up escaped truck

3<sup>03</sup> PM 78163.2 Seismometer  
site in Assinica Reserve. Download  
memory. Blueberries! QM 70

4<sup>05</sup> 78179.8

Halte Cheniapiscan

Picnic area along Rte de Nord

Saw Fox again.

Saw 2<sup>nd</sup> fox 2 km south on Rd

6<sup>30</sup> PM 78291.5 Chibourgama

Dinner Romeo + Juliet

Camp Eco Camp rty w/

Vadim & Charlie

Aug 21, 2012. 78291.5

Breakfast Romeo & Juliet  
fried eggs.

11 AM Seismometer QM60 in  
Ashvap musham Reserve.  
Download Data

1 PM Picnic area on Rt 169 S of  
St. Fletcher Good pie store nearby  
to north! "Parc de Ancêtres"  
78441.1 Meat pie, blueberry pie, chocolate  
coffee

Rt 169 S of south of St. Elicie  
Storage facility

3<sup>30</sup> QM50 78498.1

Farm off Rang St Charles

off of Rive St Wilbrod off of <sup>Rue</sup> Melancon

Downloaded data, wrote cfg  
file to disk. Big eg on  
day 1.

5 PM UQAM

5<sup>45</sup> PM Rona 78541.1  
Hardware

6<sup>30</sup> Hotel Chicoutami <sup>walked to</sup>  
Dinner at restaurant <sup>since</sup> ~~bonnets~~ Lotes  
Fetuchino

Aug 22, 2012. Hotel Chicoutami  
Breakfast in hotel Eggs.  
Walked down 78542.0

11<sup>15</sup> 78609 Tadossac  
Sacre Coeur Picnic Area

12<sup>45</sup> PM 78675.8 Forestville  
Supermarket Buy Food

145 Picnic Area { Archipel de  
Raguenneau  
78716.5 Walked to  
obelisk by sea. Bay  
with spartina, granite w/  
glacial flutes, wild flowers

6<sup>30</sup> PM Manic-5 Dinner at  
Picnic area by Dam Visitors ctr  
Aug 23 78880.0 Mac + cheese  
by Manic 5 Dam Hotel Energy

Hunt for seismic sta Osprey in  
nest, 2 flew overhead

12<sup>30</sup> PM 78912.4 QNMS site  
by sand pit at rd  
intersection Road to Lac  
Louise & Lac Paradis.  
and rd going west, at  
Km 35

Aug 24 78933.0 Hotel l'Energy  
pickup & head out 7:42 AM

10<sup>15</sup> AM Stopped at Manic-2  
to see the view.

11<sup>15</sup> AM Lunch - French Toast  
and coffee, Picnic area  
along Bac aux Outardes  
near Papinacho's.

12<sup>20</sup> Indian exhibit with  
teepee & long house 79097

1<sup>00</sup> 79125 Forester  
Supermarket: L'inter Marche  
Beach by Forester  
Dry out stuff! Lunch  
walk along beach - <sup>pink</sup> granite  
with black country rock,  
glacial flutes

7<sup>30</sup> 79270.9 Chicoutimi  
Hotel Chicoutime  
Dinner: Pizza at Mikes  
Trip to Walmart to buy supplies



Aug 25, 2012 leave  
Chicoutime 9<sup>30</sup> after  
9<sup>AM</sup> breakfast at hotel,  
trip to Bakery.

2<sup>PM</sup> Seismogram Site  
79338.1 Extra high  
Solar stand. By hut  
"Denise Larent Lulu"  
Sign with plastic Owl  
another sign "Camp  
Beaulieu".

Done 630 Saw Rabbit  
Beetles w/ long antennae

8<sup>PM</sup> Gas Station on Rt 381  
after very long drive on  
dist Rds. 79358.9

Hotel Baie St Paul  
Restaurant

8/26 Overhighted in  
Anberse St. Jean  
South of  
Baie Saint Paul  
79421

1<sup>30</sup>pm 79663.8 Rest Area  
just across US Border in  
VT on I91

5<sup>04</sup> PM 79861 Gas d  
Subway at Deerfield MA

7<sup>56</sup> PM Tupper NY  
8.0020.0 (END OF TRIP)

80020.0<sup>9</sup>  
75612.9

4407.1 miles

in 26-9+1 = 18 days

QM III Fieldtrip 13A

Feb 20, 2013 (Wed) 2 PM  
Leave LDEO 89910.0

2:30 Pickup printing Nanvet  
NY, Fedex office, Ac Moore  
89925.4

500 Sturbridge, dinner Roy Rodgers

7:30 Gas, Snack, Kennebunk ME  
Rest stop on ME/PAK 90204.7  
GAS at Rest stop Srv Sta

8:45 Super 8 Motel, Augusta ME  
90287.9 Exit 109 then  
West on Hwy.

Feb 21

9:30 Bangor Exit 186, West  
on Hwy. Staples buy flash drive.

10:38 GAS "on the run" sta  
Old Town Rt 2 & 178  
also coffee

Feb 21 8:30 AM

12:30 Wesley, Maine Forest  
Service Station. Station appears  
to be functioning. Green It flashing.  
Inspected antenna - looks OK. Inspected  
geophone; level & orientation OK.  
Removed 16 Gby flash card with 9.14  
GBy data copied to notebook  
cmypt & to Flash Drive. Erased  
all but 201302 directory from  
flashcard. Reinstalled card &  
started power. Processor says  
status OK. Some signal on  
all 3 components. Proc. event.  
turned off w/ green It flashing.  
Chatted w/ Brian, F.S. staff  
who come by. Finish 2:15 PM

5:30 Shen Pond Village. Dinner

Trouble going to Ashland  
Rd closed due to accident  
Return Molton. Irving  
gas.

8 PM Houlton Irving Gas  
90686.5

Ivey's motor lodge  
stay night

Feb 22, 2013 Friday.  
Sunny Leave Holton

9<sup>30</sup> AM 90733.3 Aroostook  
St Park. Hike North &  
South Peaks w/ snowshoes.  
2 hrs

1  
12<sup>00</sup> Presque Isle - Lunch

1<sup>00</sup> Meet w/ Prof Chunzeus  
Wang "ions".

S contact Mark Swanson USM  
Dave West Middlebury  
Steven Pollard USM  
N Along Ludman way

N-transversional S-transversional  
NE side of

Mine Clayton Lake Bald Mt  
deposit VMS ore deposit  
Anomalous at Mt Chou

Deborah Lake - Info.  
Me Dept of Com. Togue Pond.  
CMT return -

→ David Putnam  
david.putnam@umpl.edu

5<sup>30</sup> Hwy Lake State.  
90829.5 Station appears  
undisturbed. Road to bank  
plowed, <sup>snow</sup> banks add to  
security since hard to see  
installation.

6<sup>30</sup> gas sta store in Patton  
snack

7<sup>33</sup> Citgo, Bangor ME, 6th  
Exit 186. 90933.4

9<sup>00</sup> Exit 127 Budget Host  
motel

Feb 23, 2013 Saturday  
cloudy. Breakfast Sandwich  
at McDonalds. Leave 7<sup>45</sup>

940 AM 91098.0 Service  
area on Maine Tpk. Snack  
Kennebunk, ME.

12:07 PM Starbridge Ma exit  
1 on Rt 84. Gas at mobile,  
lunch at sbaro. 91235.0

3:30 PM ~~91335~~ 91377.7 back  
Home in Tappan NY.

91377.7 end  
89910.0 start  
1467.7 mi

OM3 Fieldtrip 13B June 6, '13

96850.9 Leave Tappan NY 845 AM

8:50 AM 96852.1 Lukoil Northvale NJ  
gas 11.3 gal

9:00 AM 96855.5 LD@O Pickup Philip

12:20 97005.6 Mass Pine Starbridge  
Lunch

2:55 97167.8 Grey Svc Area, ME TPK  
13.6 gal gas & coffee

4:21 PM mile 140 on Me TPK Bald Eagle on  
nest, pole on E side of Hwy

97299.0 5:19 PM Kelly Storage  
Pickup Keys, drop off gear C9

97374.8 6:30 PM Palton Exit on  
METPK 8.83 gal Gas Irving

97392.2 7:04 Shin Pond Village  
Camp site T9

June 7, 2013.

Shin Pond Village

7 AM Breakfast, Blueberry Pancakes  
& coffee. Break camp. Dog  
follows Philip. Red Bellied  
Sapsucker Woodpecker pecking  
signage around camp.

9:30 Hay Lake. Seismoter Site Undisturbed  
looks undamaged. Battery 13.7V.  
No lights on Taurus. Disc. Battery  
Cable, pins 13.8V. Copy 16G Flash  
Card to computer. Ends 5:00 Nov 7, 12

Popl says data fine to That  
date. Make copy of data on  
Philip's Mac, my 326 flash  
Drive. Wipe card except for  
Nov 12 directory. Return Taurus  
to vault. Seems sluggish coming  
up by eventually get status OK  
(green). Geophone look OK.  
Wait till screen goes dark  
97403.0, 10:25 AM Leave site

11:14 Moose, Male Hwy 11, 20 mi  
S. Ashland.

11:42 Pass Ashland D. Cons.

11:57 Portage, 15 min from Ashland.  
cell phone serv. OK

1:00 Moose Pt Camp. Station  
undisturbed. Battery 13.8 V. No  
lights on Taurus. Disconnect cable,  
13.8 V on connector. Remove Flash  
Card, Data till Nov 21, 07:00.  
(about 2 AM local? cold?) 97491.3

Regional eg day 311 09:00  
on Hay Lake, Moose Pt camp  
— ~~10:00~~ 5-P 50 5

Telescismic day 312 16:00  
— ~~10:00~~ 320 5 S-P

2:47 97492.8 Moose Pt Camp  
after chat w/ Mr. Martin, we checked  
Taurus. GPS had locked and it  
seemed to be working. Geophone  
drifting, but normally so.

256 Ermine, bunny together access  
rd to Moose Pt Camp

97508.8 3:22 Portage, phonecall

97513.5 3:45 Back at Check Point  
Permit for Togue Pond

97530.5 T15 R9 Mile 17  
big field, ledge on NE

7310M 97535.4 Milepost 20  
Reserve Boundary

Looked at Conv. Hut & Shed for station

434, 97536.0 Quarry

looked at — Dam Campsite

97545 5:30 PM ~~WPPCT~~

CRATER OUTLET Campsite  
steak dinner. Viewed stream  
near campsite. Togue pond

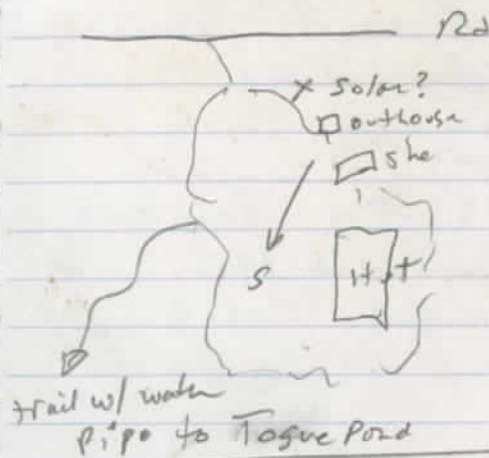
June 8, 2013. Crater Outlet  
Campsite. N side of Rd, just  
E of stream/wetland.  
2 sites here, we used upper  
one. Breakfast eggs & croissants

walked W on Rd to Quarry  
about 3 miles away.  
Rotten Qtz veins in slate

Walked down. old road  
to Togue Pond outlet str.  
"impossible" ford.

Saw hawk fly across rd.

Trouble starting car. Jump started  
w/ spare battery. Let  
recharge to 13V



97547.5 Perch Pond Campground.  
biggish grassy area by east  
end of pond. Quick look 11:21

97588.0 Ashland Shell Sta.  
12:46 gas 10.24 gal  
store opposite shell sta. Lunch  
(pizza).

97648.7 2:22 Hay Lake  
check seismometer status  
Light Blinking Green.

97754.4 4:21 Pickup in Orono  
east next 295 just N of Exit 3 in  
powerline on W side of Road

97868.9 6:37 PM Hometown  
Supermarket Brunswick dinner  
supplies

97882.2 7:30 PM Seahaven  
Cottage, Harpswell ME.  
Stopped for night. Col &  
Sphagnum and Aspergillus for  
dinner.

June 9, 2013. at Seahaven. Blueb.  
Pancakes for breakfast.

walk to Potts Pt. to view rocks  
& ecology

11:55 97896.6 Brunswick Shell  
for gas 12.8 gal

98071.3 Starbridge Rest Area  
on Mass Pike 3:14 PM.

98022.9 3:32 Mobile station at  
Exit 1, I84 8.0 gal gas

98235.0 1:30 Monhegan

98255.2 Tupper NY done! 7:05 PM  
1404.3 miles, total 4 Days  
Tolls 24.19 - 11.52 =

Water ✓  
Bread ✓  
Tomatoes ✓  
Cheese ✓  
Salami  
PopTarts ✓  
Gooseouts ✓  
Paper Towels ✓  
Cucumber ✓  
grapes ✓

8/21 Rona @ Sogehway

2x3 x 16

3 sacs of cement (quick dry)  
1 blue bin

Long decking screws (1 Box)

2 Small tarps

Thin rope - 1 bundle

1 piece of thin plywood

# 2x2s

1/4 inch bolts for GPS - 2

bubble wrap

Bucket

Sun Aug 19  
Stay Assinica?

Mon Aug 20  
Stay Ashpimushuan  
received 20-22 site #1

Tue Aug 21  
Stay Ashpimushuan

Wed Aug 22  
Stay Baie-comenz?  
Manicougan?

Thu Aug 23  
Stay Manicougan

Fri Aug 24

Sat Aug 25  
Absolute last day to work

Sun Aug 26 - make way back



Ths Aug 9 Drive to Montreal  
stay Montreal

Fri Aug 10 Test Setups  
stay Montreal

Sat Aug 11 Load van, buy supplies  
stay Montreal

Sun Aug 12 Drive to Saguenay  
stay Chicoutimi Pickup Batteries  
SITE A

Mon Aug 13 Pickup Batteries and stuff  
stay Chicoutimi 4:30 PM

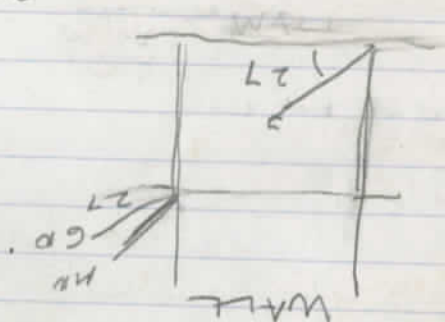
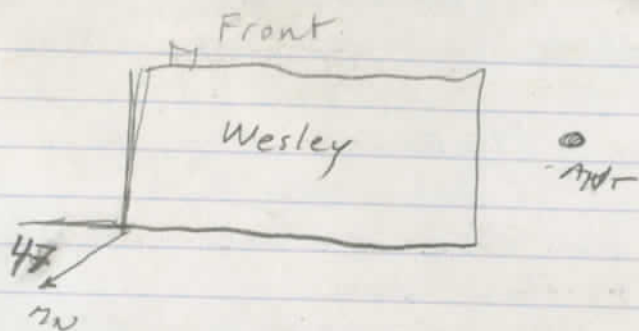
Tue Aug 14 stay  
stay Chibougamau

Wed Aug 15 stay  
stay Chibougamau

Ths Aug 16 N  
stay Nemiscau?

Fri Aug 17 stay  
stay Wemindji?

Sat Aug 18 stay  
stay Wemindji?



---

Montreal - Alma 450 km, 6:09  
Alma - Chibougamau 316 km, 5:09  
Chibougamau - Nemiscau  
317 km, 9:39  
Nemiscau - Wemindji 445 km  
11:46  
Nemiscau - Westkagamish  
250 km 7:26  
Nemiscau - Eastmain  
287 km 8:15

~~Annex~~

Bob Norvow  
914 963

→ Ryan Maker  
Camp along 8964

Bill Hamilton  
Ranger, Old Town & Hill  
Very knowledgeable  
Lives in Lee

Peter Pelletier  
District Ranger in Lee  
Covers North of Hammon

Combination for facility <sup>Wesley</sup>  
- 4110 -  
New # 4000 for  
- 6161 - Beddington

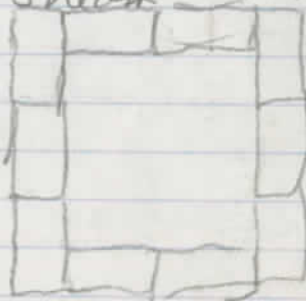
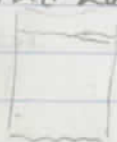
John Mallone - Landowner  
AM Forest Management  
W/ end stud mill Rd.

Shin Pond Village 207 528 2900  
Terry Hill

4 1/2 cent blocks  
16 cement blocks  
6 8' 2x3  
2 8' 1x6  
1 1/2 plywood  
2 quickrete mortar only  
Fasteners  
~~Masonry Frownt  
insulation?~~

SUM TWT  
14 15 16 17 19

Weatherby's Resort 3 Water  
Grand Lake Stream 877-796-  
5558



8 16  
2 4

32 (1A)  
Brewer Motel 359 Wilson St Brewer Me  
207 989-4476 EXT 184

Kookun Sarah's B+B

Wemindji

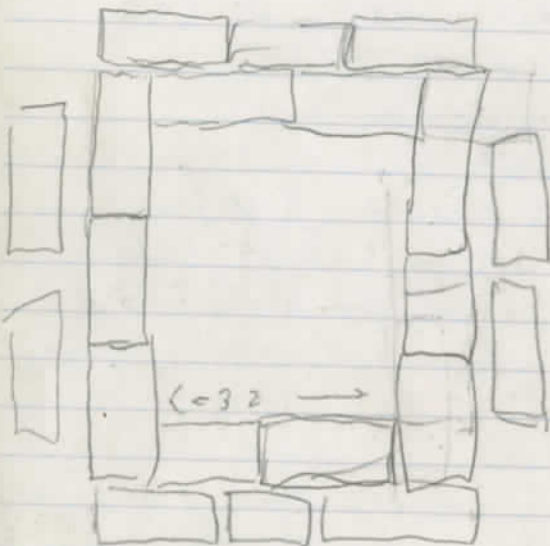
819 978 3501 (3504)

Tubs

l w h  
24 x 16 x 9

476 Kg

22 x 15 x 15



20

11

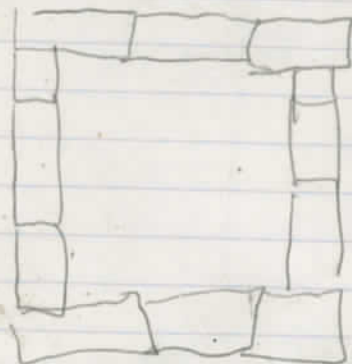
476

2.2

952

95

1047



Comfort Inn

Baie Comeau

418 589 8252

Faunenord  
camping Chibouy.

418 748 4441

418 748 7276  
x221

Bear → Late August  
Season Mid Sept

Birds Oct 1 B

Deer. Nov

Fish Lake Spouting Lake  
1 1/2 hr from Ashland.

Bob Vigne - cell. 207 631-7666

John Martin - Mouse Pt Camp. →

Chongeng Wang - Wm Presqu Isle  
207-768-9412

Limburgates - password at

Quebec Bor.

Abraham

Abraham

Le Motel Nemiscou

ph 819 673 2615

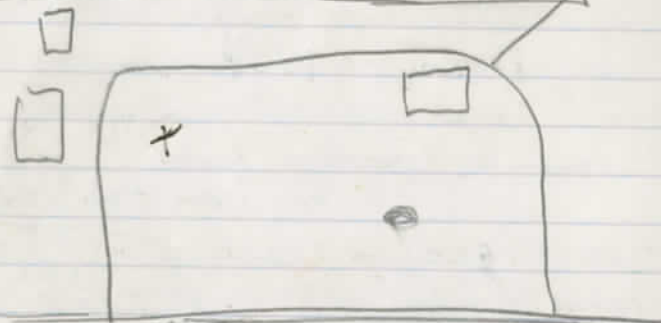
fax 819 673 2233

Magvatau Inn Wemindji

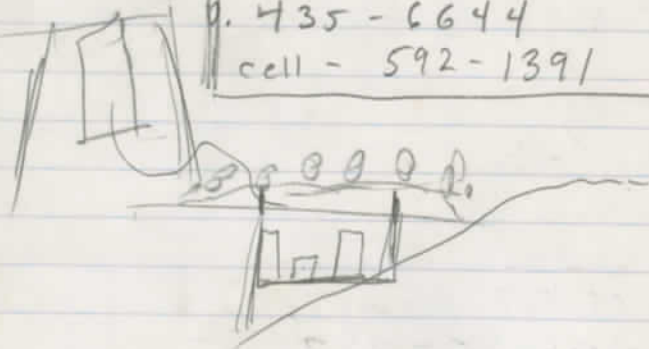
ph 819 978 3166

fax 819 978 3196

Wesley Office 434-2621  
Country Hammond  
District Ranca  
C@ 207 712-7606



Portage  
Lance Martin - Supr.  
P. 435-6644  
cell - 592-1391



Marsaudin - Ledge There  
FS.

Robbi Gross Supv  
435-6975 c 712-8603.

## Shin Pond Village

5/21

Walked N. to tent sites  
near upper shin pond. Foot  
bridge over exit stream. Viewed  
exit stream as it flows  
from pond.

Also walked far side of  
property, by unit Tent site  
T9. Gravel pits, no  
ledge

Box 32x66

Ths. 8:30

1A Jonesboro

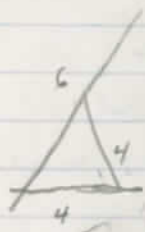
20 mi 1A

1/2 mi west of  
town line

Hay Lake Forest Service Sta.

Drove from Shin Pond Village along Grand Lake Rd. Stopped at Sebbers River, hydrographic station and boat launch near bridge. Over shot station and wound up at East Branch Penobscott R. and Mataganon wilderness campgrounds. Then backtracked to Hay Pond. The forest station has an office, a white building, a <sup>white</sup> wood shed, and a red construction barn, arranged about a large field. We found black slate ledge in field. We also walked to The Lake, which is quite large.

solar array:  $\begin{matrix} 5 & 8' & 2 \times 3's & 2 \\ 2 & 8' & 1 \times 4 & \end{matrix}$



rot  $\begin{cases} 2-6 \\ 2-6 \\ 4-4 \\ 4-4 \\ 4-4 \end{cases}$

Dave Struble

St. Entomologist  
287-7981

Bill Hamilton Director

207 287 4761

Vern Labbe - MPL

Ashland  
Northland

435-7963

0

Terrill Craig Hill  
Shen Pond

Will Harris Director BPL

287-4961

Rita - 6 mi gate

T2

Al Cowperthwaite Island

Island Falls

Craig Bayer

Joe Head Ranger

Hay Lake

Mints

Will

207 7129074

Island Falls

20 min

3 PM

Mt Chase Area

Mataamoon gate - Baxter p51  
Ranger Sta near Hay Pad  
on Grand Lake Rd. p51

Ship Pond region p51

Mt Chon p52

Last week

Ashland Area

ranger sta on goding rd p64

PAW MT MPR L p64

Fish River Gatehouse } P63  
6 Mt Gatehouse }

Catherine Phaneuf  
URAM Grad student

Togvo Pond Shed

3062 or 3061 Camp key above  
mat 19<sup>th</sup> AM shed door

Nat Sci Fund  
Earthscope

Sun

L

D

BBQ chicken

HW

Mon

B

on road

Kelley Storage

L

sw

130 Kelley Rd

D

steak

Exit 191

Tu

B

eggs

609 10964

L

sw

D

ribs & cheese

ASP

W

B

muffins

Katahdin High

L

sw

207-365-4218

D

spaghetti

Byer Small

Th

B

pancakes

2:00

L

sw

→ evening workshop for teachers

D

stew

→ presentation/demo for students (sci club)

F

B

oatmeal

→ teaching aids

L

sw

D

HW

S

B

435

Vern Labbe 7963 x 209

Ashland 45 RADAR RD

207-435-7963

Vern / Dept of Conservation

Thatcher Rose / Linda Lund

207-255-6582

Howard  
Coul

201714

Seas

Battery

71

Battery posts

Lowe's

- ✓worce nuts
- ✓wood for masts
- ✓plastic paint bets
- insulation
- ✓wood to frame pads
- ✓plastic tub (rect)
- ✓3-2 adaptors
- ✓ties
- ✓elec tape
- ✓caulking

Bubble wrap?

sleeping pad?

A+ } Refftek  
 C- } power.

Concrete

Supermarket

- ✓dishwashing detergent
- plastic garbage bags
- ✓onions
- ✓rolls
- ✓bread
- ✓eggs
- ✓potatos
- ✓muffins
- ✓oatmeal
- ✓BBQ chicken
- ✓cold cuts
- ✓butter
- ✓steak
- ✓spagotti
- ✓spagetti sauce
- ✓romano/par. cheese
- ✓tuna
- ✓cocoa
- ✓mustard
- ✓jelly