

**Outdoor writing products\*  
for Outdoor writing people**



*This cover contains  
post-consumer  
recycled material*

***Rite in the Rain***

A patented, environmentally responsible, all-weather writing paper that sheds water and enables you to write anywhere, in any weather.

Using a pencil or all-weather pen, *Rite in the Rain* ensures that your notes survive the rigors of the field, regardless of the conditions.

J. L. DARLING CORPORATION  
Tacoma, WA 98424-1017 USA  
[www.RiteintheRain.com](http://www.RiteintheRain.com)

**Item No. 1773**

ISBN: 078-1-60134-051-1

©

Made in the USA  
US Pat No. 6,863,940



*Rite in the Rain*

ALL-WEATHER  
**OUTDOOR JOURNAL**

No 1773

QM III  
#4



Name QMIII - Book  
Bill Menke  
Address LDED  
61 Rt 9W, Palisades NY  
Phone 845-304-5381 10964

Project \_\_\_\_\_  
\_\_\_\_\_  
\_\_\_\_\_



*Rite in the Rain* — A patented, environmentally responsible, all-weather writing paper that sheds water and enables you to write anywhere, in any weather. Using a pencil or all-weather pen, *Rite in the Rain* ensures that your notes survive the rigors of the field, regardless of the conditions.

## CONTENTS

PAGE	REFERENCE	DATE
	RT130	
	<pre>           Geophone                           v           -----&gt; [amplify] channel   v                 amplified                 voltage   v                 [Stream]   v                 digital                 Data                     </pre>	
Field:	① 100 samples/s	
	② 1 sample/s	

## RT 130 configuration

File/ Trevor.cfg  
New

### ① Station parameters.

NAME: test

NUMBER: 1

COMMENT: test at Lamont

EXPERIMENT: QM3

NUMBER: 0

APPLY / DONE

### ② Channels

Check Mark

→ 1: Z

GAIN: UNITY

SENSOR MODEL: L22D

SERIAL: 365

COMMENT: poorly oriented.

→ 2: GAIN: UNITY

NAME: N

→ 3: NAME: E

GAIN: UNITY

### ③ stream 1.

Record length: 3600 s

sample rate: 100

data format: stream 1

trigger type: cont

## trigger details

record length 3600

store 2001

Recording Destination Disk

Channels 1, 2, 3

## ④ Sensor Calibration

ENABLE ON

Signal step

Amp 0.3

Dur 500

step mt 250

step wid 250

Apply done  
(sensor calib. sch. NO checks)

## ⑤ Sensor Auto Recenter

group 1-3

enable ON

~~Auto~~ cycle interval 3

Add pan

V 3.0

H 3.0

Max AT 5

AT Int 6

Apply, Done

Scale: 1 square =

## ① Aux Data

Rec Dest Disk

Chs 1, 2, 3

period 10

rec len 86400

check. ① channel 1, 2, 3 checked ✓  
gain unity

② stream 1 ✓

chs 1v 2v 3 ✓

RL 3600

sample rate 100

stream 1

CONT REC

Disk

starttime well in past

③ Sensor Calib 6123 ✓  
step

④ Sensor Cal Sch OFF

⑤ Auto Recenter

123 ✓

⑥ Aux Data Disk

Scale: 1 square = 105 / 86400

Rate in the Rain

## Configuration

Send to Das (memory)  
WP WRITE PAMS (writes to disk)

## Control

### Status

Start Acq  
Memory 30 of 4352 kb  
0 of 7621 Mb  
0 of 7621 Mb  
temp 21.4°C  
power 12.4V, 2.3V  
1, 2, 3 cont ↑ not close to zero  
cont rec str  
last GPS loca 00:00:14

## Monitor

view chrs 1, 2, 3  
all chs on.

Dubious Results on Pullin

## Inspect Seismometer

inspected - exterior ok  
LEDs on R213φ  
status check 2014:163:20:26:47  
Acq ON  
Data on Disk  
Power ok GPS lock-.36

## stop Recorder

stop acq ON → OFF  
Dump PAM

# Grocery List

- ✓ Paper towels
- ✓ Canned
- ✓ Onions
- ✓ Potatoes
- ✓ Rice
- ✓ Cans of soup
- ✓ Mustard
- ✓ Mayo
- ✓ Butter
- ✓ Salsami
- ✓ Cheese
- ✓ Toilet paper
- ✓ Jelly
- ✓ Water

# Spring AOW + LAURENTIAN HILLS

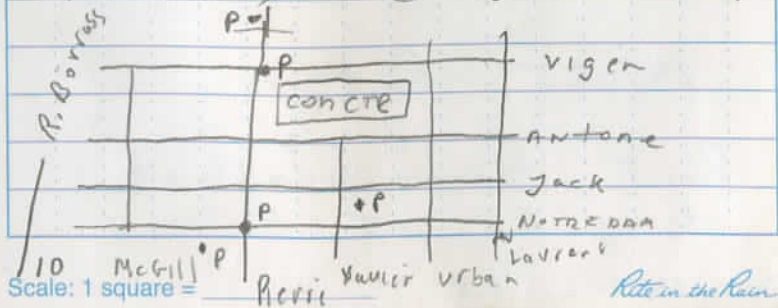
May 4, 2015, 12:55 PM  
Leave Columbia Univ  
143679.1

2 PM Sloatsburg Service Ctr  
NYS Thruway Lunch at  
Spano's, Pizza

5<sup>25</sup> Valera Gas Station  
Exit 26 I87 Northway  
GAS, Dinner

6<sup>54</sup> PM Plattsburg Mall off I87  
Dinner China Caffe

9<sup>15</sup> PM Motel Champlain  
Brossard Quebec Room 19  
144066.6 (450) 671-2299



May 5, 2015. Drive to Conv.  
Center 8:50 AM.

Dinner Men's the Cous Cous  
w/ Jan Batstow, Vadim  
Levin, students. Riona  
514-550-2405

Back to Hotel 10 PM

May 6, 2015

Park De Maisonneuve  
& St Laurent, Montreal

Breakfast Tim Hortons by  
Conv. Center 144092.8

Lunch IGA 2:30 PM  
St Urban N of Conv CTR

144185 Park

Park Mont-Tremblant  
off of RT 125, Entrance

Scale: 1 square = Fee

8 PM 144193 Ultramar Gas  
Saint-Donat

9:30 Ultramar 144252.9 on Rt 335

May 7, 2015. 6:30 AM Leave for  
NY, 144293.1

144449.8 9:15 AM Lucerne NY  
Mobil sta off of 287  
Gas, Breakfast

144642.5 Tappan NY, Home.

Total  $144\overset{15}{4}842.5$   
 $173679.1$

963.4 mi.

Scale: 1 square =

Rite in the Rain

Moose Pt. Seismometer

Decommission Aug 10, 2015

1:00 PM, LEDs OK

TIME 2015: 222:17:07:41

AQ ON EVENT 20791

Ram 1165 of 4352 RB

4401 of 7621 Geophone

7615 of 7621 T35375

Temp 17.5 °C CM635-1205-

Power 14.1V, 3.3V 50Hz

channels 1, 2, 3

Streams CC

GPS Last Lock 00:00:02

Lat N 46:49.9723

Lon W 67:45.6840 268 m

Geophone, -2.7V, -0.2, +0.6

Real Time Monitor, Ch1 Bad, 2, 3 OK

Dump RAM, STOP ACR

Geophone -2.7V, -2.2V, +2.2V

S/N 98DB RT130

CMG-SCU-0006

G5685 Breunert Box

GPS ANT 1373

Panel 8030310 bitten cable

PN checked orientation

Scale: 1 square =

w/ compass ok  
Done 4:20



## Six Mile Decomission

Aug 9, 2015 9:51 AM

Site Undisturbed DAS AB2B

Acq Yellow start off

Events 19641

Ram 6400 of 6400

Disk 1 7613 of 7621

Disk 2 7612 of 7621

Temp 18.1C Power 13.6V, 3.3V

Chan 1, 2, 2, STREAMSCC

GPS 2015: 221:13:54.01

Last Loc 0:0:0

N 46:38.1104 W 68:31.6875

215m

Monitor: All 3 channels OK

Mass pos +1.2V, +0.9V, -0.3V

Lock seismometer

-7.8V, -8.0V, +8.3V.

insert new disk, Format, Dump Data.

2015221 on disk #3

2014168 - 2014345 on disk #1

2014345 - 2015175 on disk #2

Breaker Box G9525 GPS 4183

CMG-3T 1205-50143 T3267



↑

Level OK

Orientation OK by compass  
ANTS!

Scale: 1 square =

## Hay Lake Decomission

SITE UNDISTURBED Aug 8, 2015

1:14 PM Acq ON, DAS 9E4G

events 50202 Ram 1832 of 4352

D1 7614 of 7621, D2 5548

T 21.46 Power 14.2V 3.3V

Ch 1, 2, 3, STREAMSCC - GPS 00:00:30

Lat N 46:07.6882

Lon W 068:43.1564 205m

Sensor -7.9V, -0.3V, +0.5V

Real time monitor ch1 Dead, 2, 3 OK

Lock Geophone, Box G-2226

-7.9V, -7.9V, +8.4V Looks Locked

STOP AD, DUMP RAM

Serial T35060



Level OK, Orientation

checked by compass OK

CMG 3T 1205-50143

GPS Ant 431

Scale: 1 square =

Rate in the Rain

$$\ddot{\rho} = -\lambda \rho$$

$$(\dot{\rho}^2) = 2\rho\dot{\rho} \quad (\dot{\rho}^2)^2 = 4\rho^2(\dot{\rho})^2$$

$$(\ddot{\rho}^2) = 2\dot{\rho}\ddot{\rho} + 2\rho\ddot{\rho}^2$$

$$\downarrow -2\lambda\rho^2$$

$$\frac{2(\dot{\rho}^2)^2}{2\rho^2} \rightarrow \frac{2(\dot{\rho}^2)^2}{2\rho^2}$$

implies

$$\rho^2(\ddot{\rho}^2) = \frac{1}{2}(\dot{\rho}^2)^2 + 2\lambda^2\rho^4$$

~~sin~~

$$\rho = \sin \lambda t \quad \rho^2 = \sin^2 \lambda t = \sin \lambda t \cos \lambda t$$

$$\dot{\rho}^2 = 2\lambda \sin \lambda t \cos \lambda t$$

$$\ddot{\rho}^2 = 2\lambda^2 \cos^2 \lambda t - 2\lambda^2 \sin^2 \lambda t$$

$$(\sin^2 \lambda t)(2\lambda^2 \cos^2 \lambda t - 2\lambda^2 \sin^2 \lambda t) =$$

$$\frac{1}{2} 4\lambda^2 \sin^2 \lambda t \cos^2 \lambda t - 2\lambda^2 \sin^4 \lambda t$$

$$2\lambda^2 (\sin^2 \lambda t \cos^2 \lambda t - \sin^4 \lambda t) =$$

$$2\lambda^2 (\sin^2 \lambda t \cos^2 \lambda t - \sin^4 \lambda t) \quad \checkmark$$

Scale: 1 square =

Action Packer  $\rightarrow 6$

20 short Al angles

~~end~~ caps 14

hose fittings 13

PVC Pipe Conn. 14

11 Hose Clamps

Small Grey Box LL7

Long PowerBox - Rt Cable

Control Unit G9222 + Cables

1POD 5012444

1DOB 5012444

Missing U for GPS 1421

Plate w/ Long Al angles 20

SU 102

17:20

Scale: 1 square =

Rite in the Rain

11-159

5 palletes

- 9 action packers
- 2 solar panel boxes
- 10 Geophone Boxes
- 4 RT Boxes
- 1 small case

Action Packer 5006357 #1

GPS Cables +---+---+ 1

Battery - Battery cables sets +---+ 1111

Battery - Power Box cables +---+ +---+ 1111

Power - RT Cables +---+ 1111

Action Packer 5006357 #2

GPS ANT 3401, 2645, 1534

2300, 1373, 2682, 2701, 2620

Black Geophone cable, w/ Geop. Cable

Power Boxes. 3

Action Packer #3 10

Ac AI Channels 10

Action Packer #4

AI Channels 6

Short AI cables 12

AI end pieces 30

Action Packer #5

32 u's for Antenna 175

2 Bug stainless bolts &amp; nuts

2 END pieces, Spool B/W hose

FF147 Geophone Box, Pink

T35060, G6226, 2 cables

FF192 Geophone Box, Pink

T3767, G9525, 2 cables

F6231 Geophone Box, Pink

T35375 G5685 2 Cables

R1024 RT Box, Grey

969E, 9E45, 979D

FR189 RT Box, PINK

9DA1, 9E02, A092

FR156 RT Box, PINK

939A, 9D99

FR147 RT Box, PINK

9E4C, 98DB, AB2B

FR174 RT Box, PINK

7 Power Boxes, 25

2 GPS Cables

2 Power Box - RT Cables

2 Battery - Power box cables

2 Battery - Battery cable sets

GPS 4183

GPS 1431 missing

Scale: 1 square =

Rite in the Rain

BSP 151 (Solar panel box)

5469037 5469111

5042808 4401277

5469114 4066937

4405899 7637944

BSP11 (Solar Panel Box)

1007755 5042601

7637862 4445185

5042794 4042967

5042701 4066815

FG141 Geophone Box, PINK

T35423 G6046 2 cables

FG192 Geophone Box, PINK

T34930 G4562 2 cables

FG183 Geophone Box, PINK

T34930 G4562 2 cables

FG194 Geophone Box, PINK

T35067 G4557 2 cables

FG318 Geophone Box, PINK

T35477 G6595 2 cables

FG222 Geophone Box, PINK

T3N63 G6489 2 cables

G220 Geophone Box, Grey

T25283 G6407 2 cables

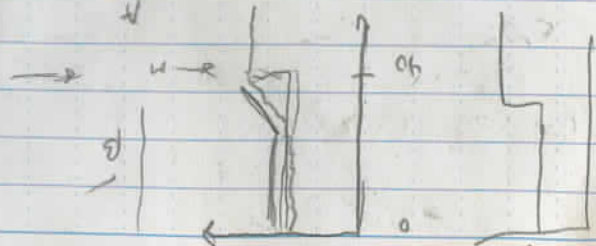
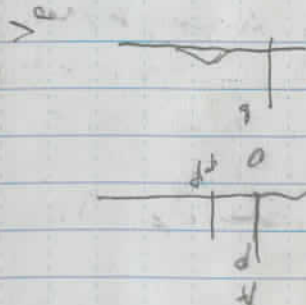
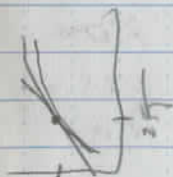
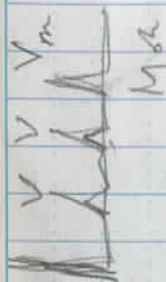
G68 Geophone Box, Grey

T35659, G6933, 2 cables

Scale: 1 square =

15.00

371.



Scale: 1 square =

Rite in the Rain

Fes 1

✓ Bovell	1 Halluc
✓ Charo	2 smoking
✓ De Abychi i	3 / language
✓ Donahue	4 core
6 Rim	5 SIDE
✓ Hermer	6 55 rule
✓ Ivanoff	7 VISUAL 74
✓ Jimenez	1 Vision
✓ Kramer	2 Eleph
✓ Le	3 Aud. Hall
✓ Miao	4 coffee ✓
✓ Navarro	5 VISUAL Hall
✓ Nguyen	6 Parent Educ.
✓ Rivera	7 use vis Hall
✓ Robinette	1 Volcano
Rosenberg	2 Aud Halluc
Schlenger	3 ✓ VIS Halluc
Solin	4 Neanderthal
Tarpley	5 Eleph.
Vefajova	6 Neanderthal
Washington	7 SmoX 143

Rite in the Rain   
ALL-WEATHER WRITING PAPER

Outdoor writing products\*  
for Outdoor writing people



Travel journal Kit



Sketch Book



Birder's Journal



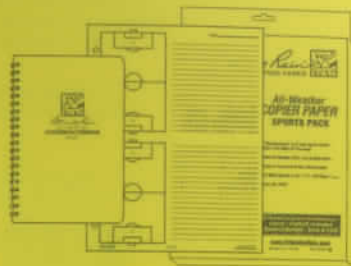
Copier & Ink-Jet Paper  
& All-Weather Pens



Outdoor Journals



Sportsman's Journals



Coach's Products

RiteintheRain.com