

**Comparison of arsenic concentrations in simultaneously-collected groundwater
and aquifer particles from Bangladesh, India, Vietnam, and Nepal**

A. van Geen^{1*}, K. Radloff¹, Z. Aziz¹, Z. Cheng¹, M.R. Huq², K.M. Ahmed², B. Weinman³,
S. Goodbred³, H.B. Jung⁴, Y. Zheng^{1,4}, M. Berg⁵, P.T.K. Trang⁶, L. Charlet⁷, J. Metral⁷,
D. Tisserand⁷, S. Guillot⁷, S. Chakraborty⁸, A.P. Gajurel⁹, B.N. Upreti⁹

¹Lamont-Doherty Earth Observatory of Columbia University, Palisades, New York, USA

²Department of Geology, University of Dhaka, Bangladesh

³Earth & Environmental Sciences, Vanderbilt University, Nashville, Tennessee, USA

⁴Queens College, City University of New York, Flushing, New York, USA

⁵Eawag, Swiss Federal Institute of Aquatic Science and Technology, Dübendorf, Switzerland

⁶Hanoi University of Science, Hanoi, Vietnam

⁷LGIT-OSUG, University of Grenoble, Grenoble, France

⁸Department of Chemistry, Kanchrapara College, Kanchrapara, West Bengal, India

⁹Institute of Science and Technology, Tribhuvan University, Kirtipur, Kathmandu, Nepal

Submitted to *Applied Geochemistry*, December 16, 2007

Accepted March 31, 2008

*Corresponding author: avangeen@ldeo.columbia.edu

Abstract

One of the reasons the processes resulting in arsenic release to groundwater in southern Asia remain poorly understood is the high degree of spatial variability of physical and chemical properties in shallow aquifers. In an attempt to overcome this difficulty, a simple device that collects groundwater and sediment as a slurry from precisely the same interval was developed in Bangladesh. We augment here recently published results from Bangladesh and India relying on the needle-sampler with new data from 37 intervals of grey aquifer material of likely Holocene age in Vietnam and Nepal. We compare a total of 145 samples ranging in depth from 3 to 36 m that were analyzed for As (1-1000 $\mu\text{g/L}$), Fe (0.01-40 mg/L), Mn (0.2-4 mg/L) and S (0.04-14 mg/L) in filtered groundwater. The P-extractable (0.01-36 mg/kg) and HCl-extractable As (0.04-36 mg/kg) content of the particulate phase was determined in the same suite of samples, in addition to Fe(II)/Fe ratios (0.2-1.0) in the acid-leachable fraction of the particulate phase. Needle-sampler data from Bangladesh indicated a relationship between dissolved As in groundwater and P-extractable As in the particulate phase that was interpreted as an indication of adsorptive equilibrium, under sufficiently reducing conditions, across three orders of magnitude in concentrations according to a distribution coefficient of 4 mL/g. The more recent observations from India, Vietnam, and Nepal show groundwater As concentrations that are often an order of magnitude lower at given level of P-extractable As compared to Bangladesh, even if only the subset of particularly reducing intervals characterized by leachable Fe(II)/Fe >0.5 and dissolved Fe >0.2 mg/L are considered. Without attempting to explain why As appears to be particularly mobile in reducing aquifers of Bangladesh compared to the other regions, we explore the consequences of increasing the distribution coefficient for As between the particulate and dissolved phase to 40 mL/g for the flushing of shallow aquifers of their initial As content.

1. Introduction

Even though scientists throughout the world have been mobilized by the health impact of elevated As levels in reducing groundwater of southern Asia, attempts to explain the observed patterns from first principles have so far met with limited success. One difficulty is that it remains unclear which particulate phase(s) play a role in regulating the partitioning of As between the dissolved and particulate phase – be it through solubility control or adsorption. There is little doubt that microbial reduction of Fe oxyhydroxides is a pre-condition for significant release of As to groundwater (Nickson et al., 1998; BGS/DPHE, 2001). But as pointed out by Polizzotto et al. (2006), it is hard to reconcile the leading hypothesis linking the release of As to groundwater to the reduction of Fe(III) oxyhydroxides with the evidently very low proportion, possibly absence, of such phases even in shallow grey aquifers where dissolved As concentrations are low. Binding constants for As on Fe(III) oxyhydroxides derived from controlled laboratory studies tend to underestimate the concentration of As in solution when applied to natural conditions, even if competing ligands such as phosphate and silicate are taken into account (BGS/DPHE, 2001; Swartz et al., 2004). In the case of a particularly well characterized shallow aquifer in Vietnam and relatively simple hydrology, Postma et al. (2007) had to allow for two different stability constants for Fe oxyhydroxides, an adjustable As/Fe ratio in dissolving Fe oxyhydroxides, and a reduced density of adsorption sites for Fe (III) oxyhydroxides in order to model their data. This suggests that quantitatively relating laboratory-based studies of As behavior in model systems to redox changes in the natural environment, while clearly the ultimate goal, may remain difficult to achieve for a while to come.

Over the past few years, contributors to the present study have taken a more empirical approach by trying to determine if there is a systematic relationship between As concentrations in the groundwater and a plausible reservoir of exchangeable As in aquifer particles (Swartz et al., 2004; Zheng et al, 2005). A key tool developed with this goal in mind has been the needle-sampler, a simple device that collects groundwater as well as sediment as a slurry from precisely the same depth interval (van Geen et al., 2004; 2006). Deploying the needle-sampler overcomes the problem when collecting groundwater from a well and aquifer sediment by coring nearby that the two intervals may be geochemically distinct because of the highly variable nature of fluvio-deltaic deposits. Using the needle-sampler in a broad range of settings in Bangladesh, van Geen et al. (2008) recently documented that a roughly linear relationship between dissolved As in groundwater and P-extractable As in the particulate phase held across three orders of magnitude in concentrations and interpreted this finding as an indication of adsorptive equilibrium. The importance of reductive dissolution as a pre-condition for As release to groundwater was acknowledged, as this relationship was shown to hold only for intervals that were sufficiently reducing.

The new evidence for adsorptive equilibrium may guide future studies of the specific mechanisms of As mobilization but, perhaps more significantly, provided the first quantitative estimate of the likely time scale over which an aquifer can be flushed of its initial As content by groundwater flow (BGS/DPHE, 2001). The distribution coefficient inferred from the data in Bangladesh ($K_d = 4 \text{ mL/g}$) shows that, on average, the As content of groundwater accounts for ~3% of the combined pools in the dissolved and mobilizable particulate phase. Converted to a retardation factor, the estimated distribution coefficient indicates that As is transported through an aquifer ~40 times more slowly than groundwater because of adsorption. Using this information and a simple advection-diffusion model, van Geen et al. (2008) showed that shallow aquifers deposited during the late Holocene could be flushed of their initial As content in a few hundred to a few thousand years, depending on the

velocity of groundwater flow (BGS/DPHE, 2001; McArthur et al., 2004; Ravenscroft et al., 2005; Klump et al., 2006). An argument was presented, based on a representative range of groundwater flow velocities, that the regional and local distribution of As in shallow aquifers of the Bengal Basin could therefore reflect different flushing histories rather than a difference in the initial As content of aquifer particles (Meharg et al., 2006).

It is worth emphasizing that a subset of intervals sampled in Bangladesh characterized by leachable Fe(II)/Fe ratios <0.5 in the particulate phase or dissolved Fe <0.2 mg/L in groundwater containing <10 $\mu\text{g/L}$ dissolved As did not fit the relationship corresponding to a $K_d = 4$ mL/g. The outliers, characterized by a significant deficit in dissolved As compared to the prediction from the relationship and the level of P-extracted As, were tentatively attributed to the persistence of binding sites with a higher affinity for As under insufficiently reducing conditions, possibly a very small proportion of Fe(III) oxyhydroxides. Much less reducing conditions corresponding to aquifers containing orange-colored sands of likely Pleistocene age and particularly low leachable Fe(II)/Fe ratios were not considered in this analysis (BGS/DPHE, 2001; Horneman et al, 2004; Zheng et al., 2005).

A more recent data set obtained with the needle-sampler from an As-affected region of West-Bengal, India, has shown that the relationship between dissolved As and P-extractable As can be more complex in other settings (Metral et al., 2008). This was attributed to generally less reducing conditions in grey shallow aquifers bordering the Hooghly River and, more tentatively, to mechanisms of As mobilization from freshly deposited sediment possibly distinct from the reductive dissolution of Fe oxyhydroxides such as the oxidation of As-rich iron sulfides (Polizzotto et al, 2006). In the present study, we further test the relationship between dissolved and P-extractable As by reporting new needle-sampler data from As-affected areas in Vietnam and Nepal. On the basis of these new observations, we also document the sensitivity of the previously proposed flushing model to a wider range of distribution coefficients.

2. Study sites

The geomorphological setting of three pairs of needle-sampler profiles collected in Bangladesh and one transect composed of seven profiles from West Bengal, India, has been described elsewhere (van Geen et al., 2006; 2008; Metral et al., 2008). In brief, an alluvial fan and an estuarine delta-plain were sampled to a depth of ~ 30 m in northwestern and southern Bangladesh, respectively (Fig. 1). Profiles collected in both central Bangladesh and West Bengal instead are representative of an intermediate lowland floodplain environment, with the distinction that the supply of sediment essentially ceased a few hundred years ago in the first case due to the shift of a major stream (Weinman et al., in press), while alluvium continues to be supplied at the second site along the banks of the Hooghly River to this day. The degree of reduction of Fe oxyhydroxides leachable from the particulate phase varied with depth and location, but aquifer sands from intervals analyzed in Bangladesh and West Bengal were all grey in color and of known or likely Holocene age.

A transect of seven new needle-sampler profiles was collected in Vietnam in April 2006 from Van Phuc village, located in the northern portion of the Red River delta and 13 km south of Hanoi (Fig. 1, Berg et al., 2001; 2008). The Red River originates from the Yunnan Plateau in southern China, but sediment reaching the Hanoi area is derived from the entire catchment. There is a sharp contrast in As concentrations in shallow (<30 m) groundwater of the study area, with levels measured in the laboratory <10 $\mu\text{g/L}$ in the northwestern portion of the village and concentrations up to 500 $\mu\text{g/L}$ in the remaining portion to the south (see Fig. 6 in

Berg et al., 2007; also Eiche et al., this volume). We limit our discussion here to grey sands of likely Holocene age and report data for four needle-sampler profiles extending to 30 m depth and spaced equally along the 0.5 km southern portion of the transect (Table 1).

The location of a new 1.4 km transect composed of five needle-sampler profiles collected in May 2007 in the alluvial floodplain of the Terai in Nepal, near the south-central border with India, was also chosen to maximize the range of groundwater As concentrations (Fig. 1, Table 1). A survey of existing wells based on laboratory measurements indicated that groundwater As concentrations range from <10 µg/L southwest of Ramgram municipality, Nawalparasi district, to 500 µg/L to the southeast (see p. 94 in Shrestha et al., 2003). Whereas aquifer sands recovered from depths up to 25 m in this area were also grey in color and probably deposited during the Holocene, their origin can be linked to the erosion of the poorly consolidated sedimentary rocks of the Siwalik Group that constitute the Churia hills to the north (Willis and Behrensmeyer, 1995; Upreti et al, 1999; Guillot and Charlet, 2007). The transect is too distant from any of the major rivers draining the Terai to receive any direct of sediment input today from the Lesser, Higher or Tethys Himalaya that lie to the north of the Siwaliks, although this may have been different in the past.

3. Methods

The procedure followed to collect matched samples of groundwater and aquifer particles has been described (van Geen et al., 2004; 2006). Drillers in the Terai region of Nepal use the same drilling method as in Bangladesh and West Bengal. In Vietnam, however, water is forced into sections of PVC pipe with two electric pumps to flush sediment out of the hole instead of using the hand as a check-valve to rhythmically pump sediment-laden water out through the pipe. Drillers in Vietnam also use sections of thin-walled PVC that are cut with a hacksaw, softened over a flame, and glued together at every deployment rather than using threaded metal connectors, which is common in Bangladesh. The central opening of the metal cutter used in Vietnam was modified to allow the needle-sampler to pass through it.

As in the past, the small headspace remaining above the groundwater and sediment slurry in each needle-sampler tube was flushed with nitrogen immediately after collection in Vietnam and Nepal. After allowing the sediment to settle for a few minutes, 5-10 mL of groundwater was gently pressure-filtered under nitrogen through 0.4 µm syringe-filters and into acid-cleaned scintillation vials with PolySeal caps.

Several days before analysis for As, Fe, Mn, S, Na, Mg, Ca, and K by High Resolution Inductively Coupled Plasma-Mass Spectrometry (HR ICP-MS) at LDEO, filtered groundwater was acidified to 1% Optima HCl in the laboratory (Cheng et al., 2004). The delay in acidification, which reduces the chance of contamination and eliminates the need for shipping strong acid, has been shown to entirely re-dissolve any precipitates that could have formed (van Geen et al., 2007).

On the evening of each sampling day, sediment kept in the dark and under groundwater after flushing the headspace of the needle-sampler tube with nitrogen was subjected to two different extractions: (1) a hot 10% HCl leach for 30 min (Horneman et al., 2004) and (2) an extraction at room temperature in a N₂-purged 1 M NaH₂PO₄ solution (pH~5) for 24 hours (Keon et al., 2001; Jung and Zheng, 2006). The acid leachate was analyzed that same evening for dissolved Fe(II) and Fe(III) by colorimetry using ferrozine and later for As by HR ICP-MS. The phosphate extracts were passed through a 0.4 µm syringe filter after 24 hours and also analyzed later for As by HR ICP-MS.

4. Results

This contribution focuses on the geochemical relationships between groundwater and aquifer particles at new sampling sites in Vietnam and Nepal in the context of previous observations from Bangladesh and India based on the same sampling methods. Site-specific spatial patterns in aquifer composition and how these may be controlled by geological history and hydrology is discussed elsewhere in the case of Vietnam (Berg et al., 2008; Eiche et al., this volume; Weinman et al., in prep.; van Geen et al., in prep.) and are under investigation in Nepal.

Concentrations of As in filtered groundwater from grey aquifers of Van Phuc village in Vietnam range widely (200 ± 130 $\mu\text{g/L}$; $n=25$), with several samples at one end of the spectrum containing ~ 10 $\mu\text{g/L}$ and several samples approaching 500 $\mu\text{g/L}$ at the other extreme. Concentrations of P-extractable As (2.3 ± 1.5 mg/kg ; $n=24$) and HCl-extractable As (2.5 ± 2.3 mg/kg ; $n=23$) are comparable and vary in concert at this location, but are not related in any systematic way to dissolved As (Fig. 2a, b). Concentrations of dissolved Fe in Van Phuc span more than two orders of magnitude (<0.1 to 40 mg/L), with most groundwater samples containing >100 $\mu\text{g/L}$ As associated with >3 mg/L dissolved Fe (Fig. 2c). An advanced state of reduction in the particulate phase as well as groundwater anoxia are indicated by leachable Fe(II)/Fe ratios >0.7 and dissolved Mn >0.2 mg/L , respectively, in all sampled intervals (Figs. 2c, e). Comparing dissolved S concentrations in groundwater with typical sulfate levels in the Red River (~ 5 mg/L , Berg et al., 2008), a likely source of recharge for these shallow aquifers, suggests considerable sulfate reduction has taken place in at least half the groundwater samples from Van Phuc (Fig. 2e).

Whereas higher levels were expected based on a previous survey of Ramgram in Nepal, dissolved As concentration turned out to be relatively low (21 ± 20 $\mu\text{g/L}$; $n=12$), with only a single groundwater sample collected with the needle-sampler slightly exceeding 50 $\mu\text{g/L}$ (Fig. 2b). Excluding a (different) interval containing 15 mg As/kg , average P-extractable As concentrations in the particulate phase (0.9 ± 0.8 mg/kg ; $n=11$) are only a factor of two lower than in Van Phuc. There is no clear relation between As concentrations in the solid phase obtained by the two types of sediment extractions, and the P-extractable As content from three intervals actually exceeds more than three times the level of HCl-extractable As (Fig. 2a). A more systematic distinction between Vietnam and Nepal is that Fe concentrations exceeded 1 mg/L in only one sample from Ramgram (Fig. 2c). Possibly less strongly reducing conditions are also indicated by leachable Fe(II)/Fe ratios <0.5 in three samples from Nepal, even if dissolved Mn concentrations of 0.2 - 0.7 mg/L indicate that groundwater from these intervals is still anoxic (Figs. 2d, f). As in Van Phuc, dissolved S levels <1 mg/L in more than half the groundwater samples indicates significant sulfate reduction in most shallow aquifers that were sampled in Ramgram (Fig. 2e).

5. Discussion

The new data for dissolved and P-extractable As concentrations in shallow aquifers of Vietnam and Nepal do not fit the relationship previously documented for shallow aquifers of Bangladesh (Fig. 2b). Applying the same criteria as in Bangladesh to identify insufficiently reducing conditions (i.e. diss. Fe <0.2 mg/L and As <10 $\mu\text{g/L}$) excludes one sample from Vietnam and five from Nepal, but even then dissolved As concentrations at a given level of P-extractable As for a considerable number of samples are up to an order of magnitude lower than previously observed in Bangladesh. The needle-sampler data from India also deviate significantly, even after about half the samples from the Hooghly River floodplain are excluded on the basis of either low Fe(II)/Fe ratios or a combination of low dissolved Fe and

low dissolved As (Fig. 2b). Unlike the situation in Bangladesh, a single distribution coefficient does not adequately describe the equilibration between dissolved As and P-extractable As in the particulate phase in India, Vietnam, and Nepal.

It is not clear why concentrations of As in groundwater are roughly proportional to the P-extractable As content of aquifer particles across Bangladesh but not at the more recently sampled locations. One notable feature of the combined set of observations is that the relationship established in Bangladesh appears to place an upper bound on the concentration of dissolved As expected for a given level of P-extractable As (Fig. 2b). One possible explanation is that the 1 M phosphate extraction, which constitutes merely an operational definition of the pool of exchangeable As, may be too aggressive outside Bangladesh. Laboratory experiments have shown that even As adsorbed to Fe(III) oxyhydroxides is remobilized in 1 M phosphate because of the strong affinity of P(V) for the same sites (Jung and Zheng, 2006). Thoraj et al. (2005) also showed that the structure of Fe(II) oxyhydroxides is limited to very small clusters in the presence of As(III) during Fe oxidation experiments. This suggests that extraction in 1 M phosphate could also release As bound deeply within the natural Fe oxyhydroxides coatings of aquifer particles. We can only speculate that a milder extraction procedure might be more appropriate for quantifying readily desorbable As and could perhaps have produced a more consistent relationship across a wider range of settings.

An alternative explanation is that dissolved As levels are not controlled by adsorptive exchange with an identifiable pool in the particulate phase, even when considering exclusively Fe and sulfate reducing environments. Differences in mineralogy and/or affinity of surface sites for As are another possibility, but it is not obvious why the mineralogy of sediment reaching different regions of Bangladesh should be any less heterogeneous than sediment deposited in India, Vietnam, and Nepal.

Some of the differences in the relative efficiency of HCl and P-extractions documented here are consistent with previous observations and may therefore reflect regional trends worth exploring further. BGS/DPHE (2001) reported that oxalate extractions of aquifer sands, which can be considered to target a fraction equivalent to that mobilized by the 1 M phosphate extractions, release only 10-50% of As in the sediment measured by total digestion. Swartz et al. (2003) and Zheng et al. (2005) also noted that 1 M phosphate extractions release <30% of total As present in shallow grey sediment at several locations in Bangladesh. Within the suite of samples collected with the needle-sampler in India and Bangladesh, P-extracted As concentrations in sufficiently reducing intervals are on average 0.4-0.5 times lower than HCl-extractable As levels, respectively (Table 2). It therefore appears that 1 M phosphate extractions systematically release a modest fraction of HCl-extractable As present in aquifer solids from Bangladesh – and this phase appears to be in adsorptive equilibrium with As present in groundwater. Berg et al. (2008), in contrast, report that a similar P-based extraction releases >50% of As in the sediment at several locations in Vietnam. Phosphate extractions also leaves little residual As in the solid phase extractable in HCl for aquifer solids collected with the needle-sampler in Vietnam, as suggested by the comparable P- and HCl-extractable As levels (Table 2). The average P- to HCl- extractable As ratio for aquifer solids from Nepal is similar to the one measured in Vietnam, but more variable and less well constrained. For reasons that are presently not understood, P-extractable As concentrations are significantly lower than HCl-extractable As levels in two regions that are most affected by elevated As groundwater levels, Bangladesh and West-Bengal, India, whereas the two extractions release comparable amounts of As from the solid

phase in two regions where the problem appears to be less widespread. We speculate that the underlying cause may be related to the extent of transformation As-containing phases in aquifer particles. Observations from Vietnam and Nepal may indicate a relatively mature system, whereas the significant fraction of As contained in the solid phase in the Bangladesh and West Bengal that is not mobilized in 1 M phosphate may indicate incomplete transformation and, consequently, further delay in flushing. One practical implication is that a milder form of extraction, possibly the less aggressive extraction carried out in 0.05 M phosphate by Postma et al. (2007), might be more appropriate for identifying the exchangeable fraction of As in aquifer material across the entire affected area.

Despite the scatter, the new data can be used to place some constraints on the rate at which shallow aquifers are likely to be flushed of their mobilizable As content, assuming it is relatively uniform initially. We use the simple one-dimensional advection-diffusion model recently presented by van Geen et al. (2008) with one modification: the distribution coefficient K_d is varied between 4 and 40 mL/g to accommodate the new observations (Fig. 2a). Assuming that dissolved and particulate-phase As concentrations are initially equilibrated along the entire flow path at a concentration C_i and that recharge water entering the aquifer at one end of the flow path contains no As, the solution of the governing equation is:

$$C(x, t) = C_i \left[1 - \frac{1}{2} \operatorname{erfc} \left(\frac{Rx - vt}{2 (DRt)^{1/2}} \right) + \frac{1}{2} \exp(vx/D) \operatorname{erfc} \left(\frac{Rx + vt}{2 (DRt)^{1/2}} \right) \right]$$

where C is the concentration of As in the dissolved phase, x the distance along the flow path, v the advection velocity, D is a hydraulic dispersion coefficient, and R the retardation factor, which is related to the distribution coefficient K_d by the expression $R = 1 + \rho K_d/\theta$, where ρ is the aquifer bulk density, K_d is the ratio of the As concentration in the particulate phase on per mass of sediment divided by the As concentration in the dissolved phase, and θ is the aquifer porosity (van Genuchten and Alves, 1982).

We focus on the sensitivity of the model between distances of 50-500 m, i.e. within the range of length of likely flow paths that lead from an area of recharge to the depth range of shallow aquifers and eventually to a discharge area, typically a local stream (Stute et al., 2007; Aziz et al., 2008). We consider here only the central scenario based on a groundwater flow velocity 5 cm/d (5.8×10^{-7} m/s) and a dispersion coefficient $D = 5.8 \times 10^{-6}$ m²/s. Justification for these parameters and model sensitivity to these choices were discussed previously by van Geen et al. (2008). For K_d of 4 and 40 mL/g, retardation factors $R = 36.8$ and 359, respectively, are calculated from an aquifer bulk density of 2.24 g/cm³, derived in turn from a porosity of 0.25 and a particle density of 2.65 g/cm³.

The model assumes a uniform initial P-extractable As concentration of 4 mg/kg, which corresponds to dissolved As concentrations of 1000 and 100 μ g/L for $K_d = 4$ and 40 mL/g, respectively. Under conditions of greatest As mobility, representative of shallow aquifers in Bangladesh, the model shows that a considerable portion of the 50-500 m range of distances along the flow path is already flushed by 500 years and entirely so by 5000 years (Fig. 3). Whereas As concentrations start at a lower level under the alternative scenario associated with a ten-fold higher K_d , flushing of the aquifer is also considerably slower. The model predicts elevated As concentrations across the 50-500 distance range, and significant but incomplete flushing of the same shallow aquifers after 5000 years. The scatter in the needle-sampler data suggests that the reality under natural conditions is probably somewhere in

between these two extreme scenarios, assuming all sampled deposits are of Holocene age (this has been confirmed in Vietnam and Nepal on the basis of optically stimulated luminescence dating, B. Weinman and A. Singhvi, pers. comm.). The only upside to the fact that As appears to be particularly mobile in groundwater of Bangladesh is that shallow aquifers are likely to be flushed more rapidly in Bangladesh compared to India, Vietnam, and Nepal. This is, however, not relevant in terms of human exposure since, hopefully, much of the population in affected regions will no longer consume untreated groundwater within the next few decades. Flushing would be delayed further if, in addition, the fraction of As in the solid phase released in hot HCl is gradually converted to exchangeable As.

No claim is made here that the mechanisms underlying the observed relationships between dissolved and particulate phase As are understood. The new results merely provide some constraints on the range of situations that a more mechanistic model will eventually have to represent. Such a model, possibly based on a more accurate measure of the exchangeable As fraction in the particulate phase, will have to explain why adsorption equilibrium appears to control groundwater As concentrations in Bangladesh more systematically than at the other locations that were sampled. From a practical perspective, it would also be important to understand under what conditions the considerable pool of P-extractable As stored in the particulate phase in less reducing aquifers characterized by leachable Fe(II)/Fe ratios <0.5 or dissolved Fe <0.1 mg/L could be potentially be released to groundwater in the future.

6. Conclusions

The proportionality between dissolved and P-extractable As concentrations documented for shallow aquifers of Bangladesh doesn't appear to hold in other more recently sampled regions of southern Asia. Even after excluding intervals where conditions may not be sufficiently reducing, As concentrations in groundwater of India, Vietnam, and Nepal are frequently up to an order of magnitude lower at given level of P-extractable As than in Bangladesh. One possible explanation is that the 1 M phosphate extraction releases As from a less labile fraction in the particulate phase that, for reasons presently unclear, is more important outside Bangladesh. To a first approximation, much of the needle-sampler data obtained from grey aquifers throughout the affected region can nevertheless be ascribed to adsorptive equilibration according to a distribution coefficient that ranges from 4 to 40 mL/g. Using this formulation and a simple model of groundwater flow, we estimate that late Holocene aquifers have been, or will be, flushed of much of their initial As content 500 to 5000 years after their deposition. The uncertainty of such estimates is considerable. More robust is the conclusion that the elevated As content of groundwater throughout southern Asia is probably a transient feature, although on a time scale that extends considerably beyond the lives of the presently exposed population.

Acknowledgments

Expansion of arsenic studies beyond Columbia University's initial study area of Araihaazar, Bangladesh, was supported by NSF grant EAR 0345688. Support over the long term has been provided by NIEHS Superfund Basic Research Program grant P42 ES10349. The LGIT-OSUG field work in Nepal was supported by the EC2CO-INSU-CNRS program. We are grateful to numerous colleagues, students, and drillers for their contributions to the field work, including Linda Smith of Filters for Families in Nepal. The manuscript benefited from insightful comments provided by George Breit and Flemming Larsen. This is Lamont-Doherty Earth Observatory contribution number XXXX.

References

- Aziz, Z., van Geen, A., Versteeg, R., Horneman, A., Zheng, Y., Goodbred, S., Steckler, M., Stute, M., Weinman, B., Gavrieli, I., Hoque, M.A., Shamsudduha, M., Ahmed, K.M., in press, Impact of local recharge on arsenic concentrations in shallow aquifers inferred from the electromagnetic conductivity of soils in Araihasar, Bangladesh. *Water Resources Research*.
- BGS and DPHE, 2001. Arsenic contamination of groundwater in Bangladesh. Kinniburgh, D.G. and Smedley, P.L., (Eds.), British Geological Survey Report WC/00/19. British Geological Survey, Keyworth, UK.
- Berg, M., Tran, H.C., Nguyen, T.C., Pham, H.V., Schertenleib, R., Giger, W., 2001. Arsenic contamination of groundwater and drinking water in Vietnam: a human health threat. *Environ. Sci. Technol.* 35, 2621-2626.
- Berg, M., Stengel, C., Trang, P.K.T, Viet, P.H., Sampson, M.L., Leng, M., Samreth, S., Fredericks, D., 2007. Magnitude of arsenic pollution in the Mekong and Red River Deltas-Cambodia and Vietnam. *Science of the Total Environment* 372, 413-425.
- Berg, M., Trang, P.T.K., Stengel, C., Buschmann, J., Viet, P.H., Dan, N.V., Giger, W., Stüben, D., 2008. Hydrological and sedimentary controls leading to arsenic contamination of groundwater in the Hanoi Area, Vietnam: The impact of iron-arsenic ratios, peat, river bank deposits, and excessive groundwater abstraction. *Chemical Geology* 249, 91-112.
- Guillot, S., Charlet, L., 2007. Bengal arsenic, an archive of Himalaya orogeny and paleohydrology. *J. Environmental Science and Health Part A*, 42, 1785-1794, DOI: 10.1080/10934520701566702.
- Cheng, Z., Zheng, Y., Mortlock, R., van Geen, A., 2004. Rapid multi-element analysis of groundwater by high-resolution inductively coupled plasma mass spectrometry. *Analyt. Bioanalyt. Chem.* 379, 513-518.
- Hearn, Jr., P., Hare, T., Schruben, P., Sherrill, D., LaMar, C., Tsushima, P., 2001. Global GIS Database: Digital Atlas of South Asia, U.S. Geological Survey Digital Data Series DDS-62-C., U.S. Department of the Interior. (<http://webgis.wr.usgs.gov/globalgis/>)
- Horneman, A., van Geen, A., Kent, D., Mathe, P.E., Zheng, Y., Dhar, R.K., O'Connell, S., Hoque, M., Aziz, Z., Shamsudduha, M., Seddique, A., Ahmed, K.M., 2004. Decoupling of As and Fe release to Bangladesh groundwater under reducing conditions. Part I: Evidence from sediment profiles. *Geochim. Cosmochim. Acta* 68, 3459-3473.
- Jung, H.B., Zheng, Y., 2006. Enhanced recovery of arsenite sorbed onto synthetic oxides by l-ascorbic acid addition to phosphate solution: calibrating a sequential leaching method for the speciation analysis of arsenic in natural samples. *Water Research* 40, 2168-2180.
- Keon, N.E., Swartz, C.H., Brabander, D.J., Harvey, C., Hemond, H.F., 2001. Validation of an arsenic sequential extraction method for evaluating mobility in sediments. *Environ. Sci. Technol.* 35, 2778-2784.
- Klump, S., Kipfer, R., Cirpka, O.A., Harvey, C.F., Brennwald, M.S., Ashfaq, K.N., Badruzzaman, A.B.M., Hug, S.J., Imboden, D.M., 2006. Groundwater dynamics and arsenic

mobilization in Bangladesh assessed using noble gases and tritium. *Environ. Sci. Technol.* 40, 243-250.

Meharg, A.A., Crimgeour C.S., Hossain, S.A., Fuller, K., Cruickshank, K., Williams, P.N., Kinniburgh, D.G., 2006. Codeposition of organic carbon and arsenic in Bengal Delta aquifers. *Environ. Sci. Technol.* 40, 4928-4935.

McArthur, J.M., Banerjee, D.M., Hudson-Edwards, K.A., Mishra, R., Purohit, R., Ravenscroft, P., Cronin, A., Howarth, R.J., Chatterjee, A., Talukder, T., Lowry, D., Houghton, S., Chahda, D.K., 2004. Natural organic matter in sedimentary basins and its relation arsenic in anoxic ground water: the example of West Bengal and its worldwide implications. *Appl. Geochem.* 19, 1255-1293.

Métral, J., Charlet, L., Bureau, S., Mallik, S.B., Chakraborty, S., Ahmed, K.M., Rahman, M.W., Cheng, Z., van Geen, A., 2008. Comparison of dissolved and particulate arsenic distributions in shallow aquifers of Chakdaha, India, and Araihasar, Bangladesh. *Geochemical Transactions*, 9:1 doi:10.1186/1467-4866-9-1.

Nickson, R.T., McArthur, J.M., Burgess, W.G., Ahmed, K.M., Ravenscroft, P., Rahman, M., 1998. Arsenic poisoning of Bangladesh groundwater. *Nature* 395, 338.

Polizzotto, M.L., Harvey, C.F., Li, G., Badruzzman, B, Ali, A., Newville, M., Sutton, S., Fendorf, S., 2006. Solid-phases and desorption processes of arsenic within Bangladesh sediments. *Chemical Geology* 228, 97-111.

Postma, D., Larsen, F., Hue, N.T.M., Duc, M.T., Viet, P.H., Nhan, P.Q., Jessen, S., 2007. Arsenic in groundwater of the Red River floodplain, Vietnam: Controlling geochemical processes and reactive transport modeling. *Geochim. Cosmochim. Acta* 71, 5054–5071.

Ravenscroft, P., Burgess, W.G., Ahmed, K.M., Burren, M., Perrin, J., 2005. Arsenic in groundwater of the Bengal Basin, Bangladesh: Distribution, field relations, and hydrogeological setting. *Hydrogeology Journal* 13, 727-751.

Shrestha, B. R., Whitney, J. W., and Shrestha, K. B. (Editors), *The State of Arsenic in Nepal-2003*, National Arsenic Steering Committee, Environment and Public Health Organization, Kathmandu, Nepal, 126 pages and CD-ROM.

Stute, M., Zheng, Y., Schlosser, P., Horneman, A., Dhar, R.K., Hoque, M.A., Seddique, A.A., Shamsudduha, M., Ahmed, K.M., van Geen, A., 2007. Hydrological control of As concentrations in Bangladesh groundwater. *Water Resources Research* 43, W09417, doi:10.1029/2005WR004499.

Swartz, C.H., Blute, N.K., Badruzzman, B., Ali, A., Brabander, D., Jay, J., Besancon, J., Islam, S., Hemond, H.F., Harvey, C.F., 2004. Mobility of arsenic in a Bangladesh aquifer: Inferences from geochemical profiles, leaching data, and mineralogical characterization. *Geochim. Cosmochim. Acta* 68, 4539-4557.

Thoral, S., Rose, J., Garnier, J.M., van Geen, A., Refait, P., Traverse, A., Fonda, E., Nahon, D., Bottero, J.Y., 2005. XAS study of iron and arsenic speciation during Fe(II) oxidation in the presence of As(III), *Environmental Science and Technology* 39, 9478-9485.

- Upreti, B.N., 1999. An over view of the stratigraphy and tectonics of the Nepal Himalaya. (Eds.) P. Le Fort and B.N. Upreti: *Geology of the Nepal Himalayas: Recent Advances*. *Journal of Asian Earth Sciences* 17, 577-606.
- van Geen, A., Protus, T., Cheng, Z., Horneman, A., Seddique, A.A., Hoque, M.A., Ahmed, K.M., 2004. Testing groundwater for arsenic in Bangladesh before installing a well. *Environ. Sci. Technol.* 38, 6783-6789.
- van Geen, A., Zheng, Y., Cheng, Z., Aziz, Z., Horneman, A., Dhar, R.K., Mailloux, B., Stute, M., Weinman, B., Goodbred, S., Seddique, A.A., Hoque, M.A., Ahmed, K.M., 2006. A transect of groundwater and sediment properties in Araihasar, Bangladesh: Further evidence of decoupling between As and Fe mobilization. *Chem. Geol.* 228, 85-96.
- van Geen, A., Cheng, Z., Jia, Q., Seddique, A.A., Rahman, M.W., Rahman, M.M., Ahmed, K.M., 2007. Monitoring 51 deep community wells in Araihasar, Bangladesh, for up to 5 years: Implications for arsenic mitigation. *Journal of Environmental Science and Health* 42, 1729-1740.
- van Geen, A., Zheng, Y., Goodbred Jr., S., Horneman, A., Aziz, Z., Cheng, Z., Stute, M., Mailloux, B., Weinman, B., Hoque, M.A., Seddique, A.A., Hossain, M.S., Chowdhury, S.H., Ahmed, K.M., 2008. Flushing history as a hydrogeological control on the regional distribution of arsenic in shallow groundwater of the Bengal Basin, *Environmental Science and Technology*, in press.
- van Genuchten, M.Th., Alves, W.J., 1982. Analytical solutions of the one-dimensional convective-dispersive solute transport equation. USDA ARS Technical Bulletin Number 1661. U. S. Salinity Laboratory, Riverside.
(http://ars.usda.gov/sp2UserFiles/Place/53102000/pdf_pubs/P0753.pdf).
- Weinman, B., Goodbred Jr., S., Zheng, Y., Aziz, Z., Singhvi, A.K., Nagar, Y.C., Steckler, M., van Geen, A., 2008. Contributions of floodplain stratigraphy and evolution to the spatial patterns of groundwater arsenic in Araihasar, Bangladesh, *GSA Bulletin*, in press.
- Willis, B.J., Behrensmeier, A.K., 1995. Fluvial systems in the Siwalik Miocene and Wyoming Paleogene. *Palaeogeogr Palaeoclimatol.* 115, 13-35.
- Zheng, Y., van Geen, A., Stute, M., Dhar, R., Mo, Z.; Cheng, Z., Horneman, A., Gavrieli, I., Simpson, H.J., Versteeg, R., Steckler, M., Grazioli-Venier, A., Goodbred, S., Shahnewaz, M., Shamsudduha, M., Hoque, M., Ahmed, K.M., 2005. Geochemical and hydrogeological contrasts between shallow and deeper aquifers in two villages of Araihasar, Bangladesh: Implications for deeper aquifers as drinking water sources. *Geochim. Cosmochim. Acta* 69, 5203-5218.

Table 1 Location of new needle-sampler profiles

Vietnam (April 2006)

Label	Latitude (oN)	Longitude (oE)
VPNS-1	20.92326	105.89198
VPNS-2	20.91982	105.89751
VPNS-3	20.92081	105.89613
VPNS-4	20.92205	105.89338
VPNS-5	20.92156	105.89491
VPNS-6	20.92429	105.89043
VPNS-7	20.91848	105.89861
VPNS-8	20.91864	105.89187

Nepal (May 2007)

Label	Latitude (oN)	Longitude (oE)
PNS-1	27.51512	83.67187
PNS-2	27.51706	83.67490
PNS-3	27.51594	83.66876
PNS-4	27.51648	83.66119
PNS-5	27.51553	83.66561

Table 2 Average ratio of P-extractable to HCl-extractable As concentrations in aquifer particles collected with the needle-sampler in four countries. Also shown are the corresponding standard deviations in this ratio for each country along with, in parentheses, the uncertainty of the mean calculated by dividing by the square root of the number of determinations. Only sufficiently reducing intervals defined by leachable Fe(II)/Fe >0.5 or dissolved As >10 µg/L if dissolved Fe <0.2 mg/L are included.

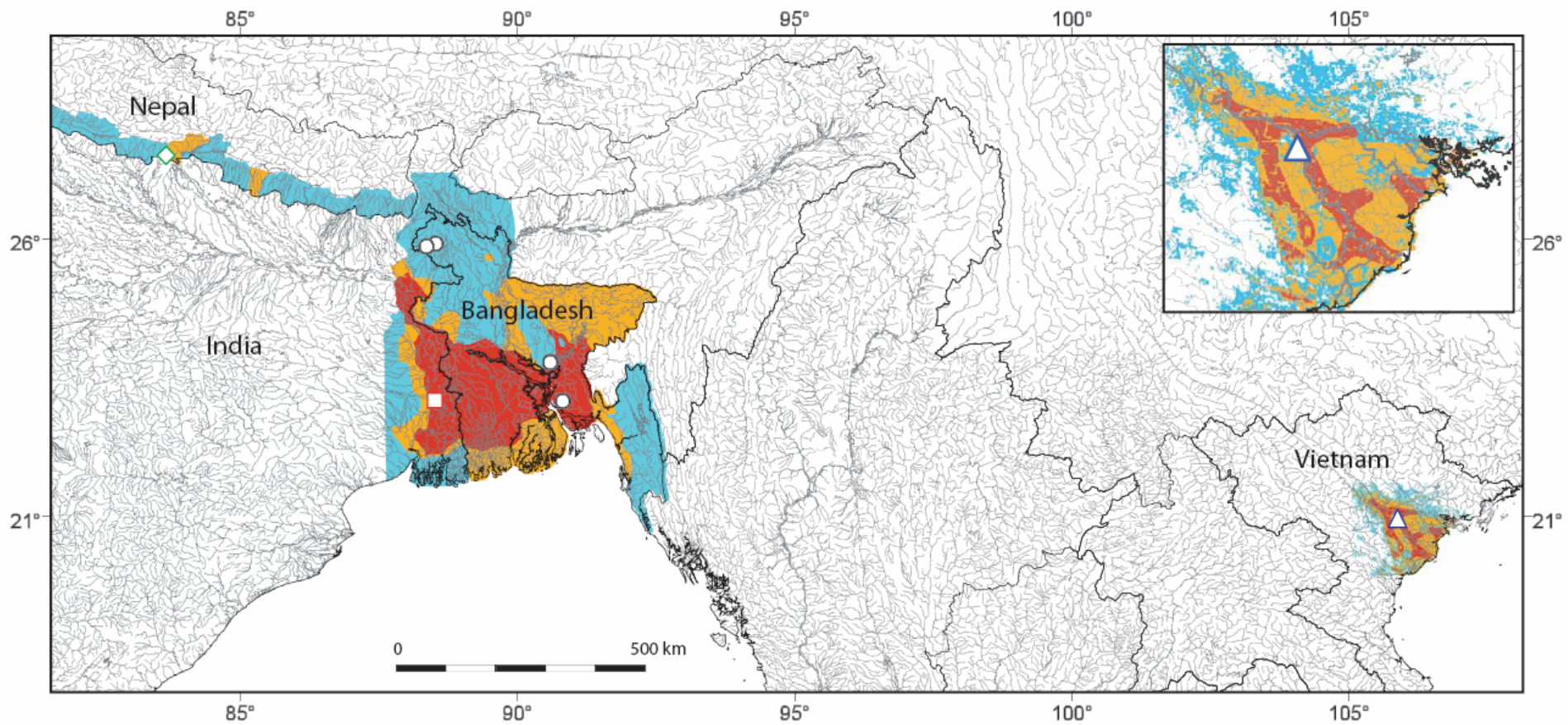
Country	P-extr. As/HCl-extr. As	n	Reference
Bangladesh	0.5±0.3 (±0.07)	21	van Geen et al., 2008
India	0.4±0.3 (±0.05)	33	Metral et al., 2008
Vietnam	1.0±0.3 (±0.06)	22	this study
Nepal	1.0±0.5 (±0.2)	7	this study

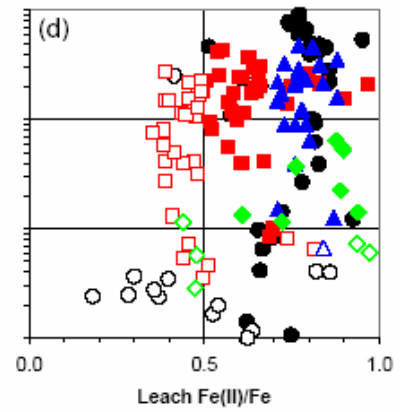
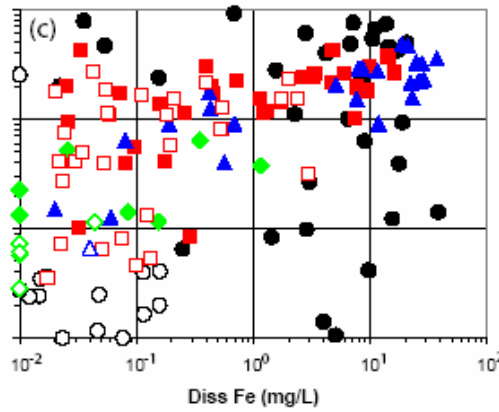
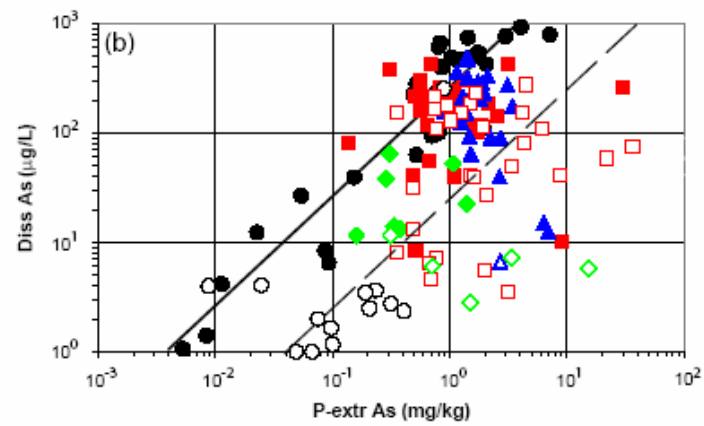
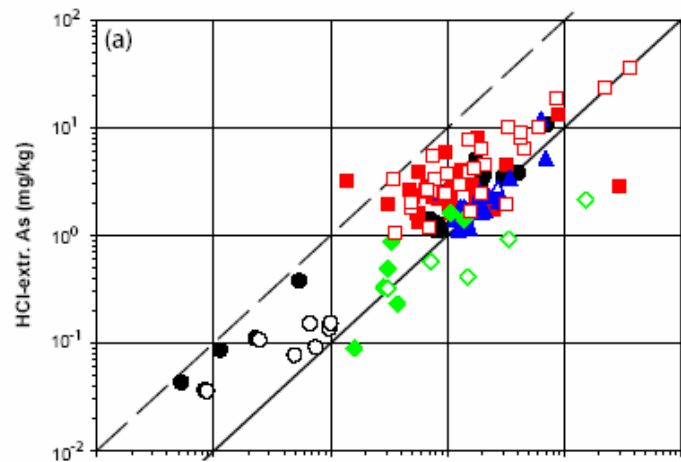
Captions

Fig. 1 Provenance of needle-sampler material from Bangladesh, India, Vietnam, and Nepal shown on a map of As-affected areas in southern Asia. The majority of tubewells sampled and analyzed by Dr. Dipankar Chakraborti's group at Jadavpur University located within red (dark grey in the printed copy) and light blue (lightest grey) areas in India and Bangladesh contain $>50 \mu\text{g/L}$ and $<50 \mu\text{g/L}$ arsenic, respectively. Orange (intermediate grey) areas indicate a mixed distribution of high- and low-As well. Modified from Metral et al. (2008) with additional well arsenic data for Nepal from Shrestha et al. (2003). In the case of Vietnam, the three shaded areas correspond to high, medium, and low risk of groundwater exceeding $50 \mu\text{g/L}$ As, as inferred from geological information by Berg et al. (2007). The inset is an expanded view of the Red River delta area. The shape of the symbols corresponds to the symbols used to distinguish different locations in Fig. 2. The map was created from the Digital Atlas of South Asia of Hearn et al. (2001).

Fig. 2 Scatter plots of groundwater and aquifer particle properties for material collected with the needle-sampler in Bangladesh, India, Vietnam, and Nepal. Note the logarithmic scale of all properties, with the exception of leachable Fe(II)/Fe ratios. Open symbols identify samples collected from insufficiently reducing samples, as identified in van Geen et al. (2008) by either leachable Fe(II)/Fe <0.5 or dissolved Fe concentrations $<0.2 \text{ mg/L}$ in samples with dissolved As $<10 \mu\text{g/L}$. Solid and dashed lines in (a) correspond to equal and 10-fold higher As concentrations in HCl-extractions, respectively, compared to As levels in P-extractions. Solid line and dashed lines in (b) correspond to $K_d = 4$ and $40 \text{ cm}^3/\text{g}$, respectively. The arrow in (d) points to a single sample from Bangladesh containing an unexplained and extremely elevated level of 190 mg S/L .

Fig. 3 Predicted distribution of groundwater As concentrations along a flowpath according to the advection-diffusion model described in van Geen et al. (2008) after 50, 500, and 5000 years for K_{ds} of 4 and $40 \text{ cm}^3/\text{g}$. Note the logarithmic scale of distance along the flow path. Also shown is the likely 50-500 m range of lengths of flow paths from recharge to discharge areas within shallow aquifers.





●○ Bangladesh ■□ India ▲△ Vietnam ◆◇ Nepal

