



JULY 1999

LOCAL CLIMATOLOGICAL DATA

NOAA, National Climatic Data Center

NEW YORK (LGA AP), NY

LA GUARDIA AIRPORT (LGA)
 Lat: 40° 46' N Long: 73° 52' W Elev (Ground): 11 Feet
 Time Zone: EASTERN WBAN: 14732 ISSN #:0198-3644

JULY 1999
NEW YORK (LGA AP), NY

DATE	TEMPERATURE °F						DEG DAYS BASE 65°		WEATHER	SNOW/ICE ON GND(IN)		PRECIPITATION (INCHES)		PRESSURE (INCHES OF HG)		WIND SPEED = MPH DIR = TENS OF DEGREES						DATE		
	MAXIMUM	MINIMUM	AVERAGE	DEP FROM NORMAL	AVERAGE DEW PT	AVERAGE WET BULB	HEATING	COOLING		0700 LST	1300 LST	2400 LST	2400 LST	AVERAGE STATION	AVERAGE SEA LEVEL	RESULTANT SPEED	RES DIR	AVERAGE SPEED	MAXIMUM					
																			5-SEC		2-MIN			
1	2	3	4	5	6	7	8	9	10	11	12	13	14	15	16	17	18	19	20	21	22	23	24	
01	78	70	74	-1	70	71	0	9	RA BR HZ	0		0.0	0.52	30.01	30.04	5.3	16	8.6	21	17	18	17	01	
02	89	73	81	6	70	74	0	16	RA	0		0.0	0.03	29.97	30.00	13.7	22	14.3	32	21	26	20	02	
03	90	74	82	7	72	75	0	17	RA BR HZ	0		0.0	T	30.06	30.09	3.6	18	6.9	21	19	17	19	03	
04	95	82	89	14	73	78	0	24	TS RA HZ	0		0.0	T	29.94	29.97	7.8	27	9.8	26	26	22	26	04	
05	100	86	93	18	72	78	0	28		0		0.0	0.00	29.85	29.88	10.6	30	11.1	22	33	20	32	05	
06	101*	85	93*	17	71	77	0	28		0		0.0	0.00	29.76	29.80	12.5	29	13.1	30	31	23	29	06	
07	92	78	85	9	57	67	0	20		0		0.0	0.00	29.82	29.85	11.9	32	13.0	25	32	21	34	07	
08	87	75	81	5	52	63	0	16		0		0.0	0.00	29.86	29.89	10.8	32	11.6	33	31	25	31	08	
09	85	73	79	3	58	66	0	14		0		0.0	0.00	29.87	29.90	6.8	19	9.1	24	23	20	23	09	
10	87	68	78	2	61	68	0	13	RA	0		0.0	T	29.77	29.80	13.0	30	15.0	31	26	24	33	10	
11	82	64	73	-3	49	60	0	8		0		0.0	0.00	30.08	30.11	8.1	34	9.7	21	34	18	34	11	
12	78	66	72	-4	53	61	0	7	RA	0		0.0	T	30.23	30.26	6.4	08	8.1	24	05	17	05	12	
13	78	64*	71*	-5	55	61	0	6	RA	0		0.0	0.01	30.16	30.19	7.0	08	10.5	36*	05	22	05	13	
14	77	66	72	-4	59	64	0	7		0		0.0	0.00	30.18	30.21	2.4	18	5.7	16	19	13	20	14	
15	89	67	78	1	58	65	0	13		0		0.0	0.00	30.09	30.13	3.5	22	6.9	22	20	20	18	15	
16	96	76	86	9	64	72	0	21	HZ	0		0.0	0.00	30.06	30.09	7.9	22	9.9	24	24	20	23	16	
17	97	79	88	11	66	73	0	23	HZ	0		0.0	0.00	30.05	30.08	7.1	21	8.9	25	19	23	18	17	
18	98	79	89	12	68	74	0	24	TS BR HZ	0		0.0	0.00	30.01	30.04	4.2	22	8.4	24	18	20	20	18	
19	97	75	86	9	70	74	0	21	TS RA BR HZ	0		0.0	T	29.90	29.93	2.4	09	7.4	34	36	26*	25	19	
20	85	73	79	2	60	67	0	14	RA	0		0.0	T	30.00	30.03	3.4	11	9.1	18	02	15	06	20	
21	82	70	76	-1	64	68	0	11	RA	0		0.0	T	30.09	30.12	4.6	16	10.7	21	22	17	19	21	
22	81	74	78	1	69	71	0	13	RA	0		0.0	T	29.95	29.99	7.5	19	9.1	21	23	16	22	22	
23	91	73	82	5	70	73	0	17	BR HZ	0		0.0	0.00	29.85	29.88	6.1	17	7.5	22	17	18	18	23	
24	98	75	87	10	69	75	0	22	BR HZ	0		0.0	0.00	29.73	29.76	6.3	23	8.2	24	25	18	20	24	
25	97	79	88	11	61	70	0	23		0		0.0	0.00	29.67	29.70	5.9	32	7.2	22	33	18	33	25	
26	91	76	84	7	63	70	0	19	RA	0		0.0	T	29.69	29.72	5.1	36	7.6	17	05	15	02	26	
27	96	76	86	9	65	72	0	21	HZ	0		0.0	0.00	29.76	29.79	4.2	33	6.9	17	30	15	31	27	
28	97	77	87	10	59	69	0	22	TS TSRA	0		0.0	T	29.76	29.79	5.8	32	8.1	25	28	20	28	28	
29	90	76	83	6	66	71	0	18		0		0.0	0.00	29.65	29.68	4.5	11	7.8	23	07	16	17	29	
30	90	74	82	5	71	74	0	17	BR HZ	0		0.0	0.00	29.65	29.68	4.2	14	8.5	23	06	15	19	30	
31	87	75	81	4	73	76	0	16	BR HZ	0		0.0	0.00	29.75	29.78	9.2	18	10.2	22	17	18	17	31	
MONTHLY AVERAGES										TOTALS-->		0.0	0.56	29.91	29.94	0.4	21	9.3	-- MONTHLY AVERAGES					
DEPARTURE FROM NORMAL												-3.51		SUNSHINE, CLOUD, & VISIBILITY TABLES ON PAGE 3										
DEGREE DAYS										GREATEST 24-HR PRECIPITATION: 0.52 DATE: 01				SEA LEVEL PRESSURE				DATE		TIME				
MONTHLY TOTAL DEPARTURE										GREATEST 24-HR SNOWFALL: 0.0 DATE:				MAXIMUM				: 30.29		12 0751				
SEASON TO DATE TOTAL DEPARTURE										GREATEST SNOW DEPTH: 0 DATE:				MINIMUM				: 29.62		29 1751				
HEATING: 0 0 0 0										NUMBER OF DAYS WITH =>				MAXIMUM TEMP ≥ 90: 17		MINIMUM TEMP ≤ 32: 0		PRECIPITATION ≥ 0.01 INCH : 3						
COOLING: 528 175 855 267												MAXIMUM TEMP ≤ 32 : 0		MINIMUM TEMP ≤ 0 : 0		PRECIPITATION ≥ 0.10 INCH : 1								
												THUNDERSTORMS : 4		HEAVY FOG : 0		SNOWFALL ≥ 1.0 INCH : 0								

HOURLY PRECIPITATION

(WATER EQUIVALENT IN INCHES)

NEW YORK (LGA AP), NY

JULY 1999

LGA WBAN # 14732

DATE	FOR HOUR (LST) ENDING AT												DATE	FOR HOUR (LST) ENDING AT												DATE	Sum if Different (See Note)	2400 LST		
	1	2	3	4	5	6	7	8	9	10	11	12		13	14	15	16	17	18	19	20	21	22	23	24			Water	Equiv.	
01													0.04	0.01	01	0.02	0.01	0.19	0.04	0.21	T	T						01		0.52
02															02					0.03								02		0.03
03															03	T												03		T
04															04													04		T
05															05													05		0.00
06															06													06		0.00
07															07													07		0.00
08															08													08		0.00
09															09													09		0.00
10															10													10		T
11															11													11		0.00
12															12													12		T
13															13													13		T
14															14													14		0.01
15															15													15		0.00
16															16													16		0.00
17															17													17		0.00
18															18													18		0.00
19															19													19		T
20															20													20		T
21															21													21		T
22															22													22		T
23															23													23		0.00
24															24													24		0.00
25															25													25		0.00
26															26													26		T
27															27													27		0.00
28															28													28		T
29															29													29		0.00
30															30													30		0.00
31															31													31		0.00

MAXIMUM SHORT DURATION PRECIPITATION (See Note)

Time Period (Minutes)	5	10	15	20	30	45	60	80	100	120	150	180
Precipitation (Inches)												
Ending Date												
Ending Time (Hour/Min)												

Date and time are not entered for TRACE amounts.

Note : The sum of the hourly totals is given when it differs from the daily total. NWS does not edit ASOS hourly values but may edit daily and monthly totals. Hourly, daily, and monthly totals are printed as reported by the ASOS site.

OBSERVATIONS AT 3-HOURLY INTERVALS

NEW YORK (LGA AP), NY
 JULY 1999 LGA WBAN # 14732

HOUR (LST)	SATELLITE		WEATHER	TEMPERATURE °F			WIND		PRESSURE (INCHES, HG)		HOUR (LST)	SATELLITE		WEATHER	TEMPERATURE °F			WIND		PRESSURE (INCHES, HG)						
	SKY COVER	CEILING 100'S OF FT		OBSERVATION TIME (LST)	EFF CLD AMT Oktas	VISIBILITY (MILES)	DRY BULB	DEW POINT	WET BULB	RELATIVE HUMIDITY (PCT)		SPEED (MPH)	DIRECTION TENS OF DEG		STATION	SEA LEVEL	SKY COVER	CEILING 100'S OF FT	OBSERVATION TIME (LST)	EFF CLD AMT Oktas	VISIBILITY (MILES)	DRY BULB	DEW POINT	WET BULB	RELATIVE HUMIDITY (PCT)	SPEED (MPH)
SUNRISE: 0428				JUL 01				SUNSET: 1931				SUNRISE: 0431				JUL 07				SUNSET: 1930						
01	OVC	014		10.00	72	66	68	82	6	10	30.00	30.03	01	SCT	NC		10.00		84	66	72	55	14	32	29.75	29.78
04	OVC	009		7.00	71	67	68	87	5	07	30.00	30.03	04	SCT	NC		10.00		80	66	71	62	21	33	29.80	29.83
07	OVC	004		1.50	70	70	70	100	9	05	30.04	30.07	07	BKN	250		10.00		78	55	64	45	13	33	29.86	29.89
10	OVC	007		2.00	75	71	72	88	8	15	30.04	30.06	10	SCT	NC		10.00		82	56	66	41	18	32	29.87	29.90
13	OVC	007		3.00	74	73	73	97	14	17	30.02	30.05	13	SCT	NC		10.00		88	53	67	30	13	30	29.82	29.85
16	OVC	025		1.00	74	71	72	91	10	19	29.99	30.02	16	SCT	NC		10.00		92	48	66	22	14	26	29.80	29.83
19	OVC	025		8.00	76	72	73	88	9	19	29.99	30.02	19	SCT	NC		10.00		86	53	66	32	12	36	29.79	29.82
22	BKN	250		10.00	74	69	71	85	10	20	29.99	30.01	22	FEW	NC		10.00		80	59	67	49	6	32	29.84	29.87
SUNRISE: 0428				JUL 02				SUNSET: 1931				SUNRISE: 0432				JUL 08				SUNSET: 1929						
01	BKN	140		10.00	75	69	71	82	10	21	29.98	30.01	01	CLR	NC		10.00		80	54	64	41	5	30	29.83	29.86
04	OVC	030		10.00	74	69	71	85	13	19	29.96	29.98	04	FEW	NC		10.00		76	54	63	47	9	30	29.82	29.85
07	BKN	024		10.00	77	69	72	77	16	21	29.98	30.01	07	CLR	NC		10.00		77	53	63	44	7	29	29.85	29.88
10	BKN	250		10.00	83	70	74	65	21	23	29.97	30.00	10	SCT	NC		10.00		81	52	64	37	17	31	29.86	29.89
13	BKN	250		7.00	88	71	76	57	15	23	29.95	29.97	13	BKN	090		10.00		86	48	64	27	16	31	29.84	29.87
16	OVC	045		7.00	87	70	75	57	16	23	29.95	29.98	16	BKN	250		10.00		83	48	63	30	18	36	29.85	29.88
19	BKN	110		7.00	84	72	76	67	14	23	29.98	30.01	19	OVC	250		10.00		79	49	62	35	15	36	29.89	29.92
22	SCT	NC		10.00	80	70	73	71	10	24	30.03	30.06	22	BKN	250		10.00		76	52	62	43	8	33	29.93	29.96
SUNRISE: 0429				JUL 03				SUNSET: 1931				SUNRISE: 0433				JUL 09				SUNSET: 1929						
01	FEW	NC		8.00	78	72	74	82	3	26	30.03	30.05	01	BKN	140		10.00		75	53	62	46	5	32	29.94	29.97
04	CLR	NC		7.00	77	71	73	82	6	23	30.04	30.07	04	BKN	140		10.00		73	54	62	51	6	32	29.96	29.98
07	BKN	018		5.00	77	72	74	85	0	00	30.07	30.10	07	BKN	130		10.00		75	50	61	42	0	00	29.97	29.99
10	SCT	NC		7.00	82	71	75	69	8	06	30.10	30.13	10	BKN	130		10.00		80	51	63	37	5	VR	29.97	30.00
13	OVC	055		7.00	81	70	74	69	9	04	30.09	30.12	13	BKN	140		10.00		82	48	62	31	17	19	29.90	29.93
16	BKN	250		6.00	89	71	77	55	12	17	30.07	30.10	16	BKN	250		10.00		80	63	69	56	15	16	29.83	29.86
19	BKN	250		6.00	83	72	75	70	12	19	30.04	30.07	19	BKN	250		8.00		79	70	73	74	12	19	29.76	29.79
22	SCT	NC		10.00	83	73	76	72	9	20	30.06	30.09	22	BKN	140		7.00		80	78	79	94	10	19	29.72	29.75
SUNRISE: 0429				JUL 04				SUNSET: 1930				SUNRISE: 0433				JUL 10				SUNSET: 1929						
01	BKN	250		6.00	83	73	76	72	10	23	30.03	30.06	01	OVC	090		10.00		83	70	74	65	12	29	29.71	29.74
04	BKN	140		7.00	82	73	76	74	8	24	30.00	30.03	04	OVC	140		10.00		80	66	71	62	18	26	29.68	29.71
07	BKN	250		6.00	83	73	76	72	9	26	29.98	30.01	07	OVC	140		10.00		77	67	70	71	14	27	29.73	29.75
10	OVC	100		7.00	89	73	78	59	9	28	29.99	30.02	10	BKN	140		10.00		79	65	70	62	12	27	29.74	29.77
13	BKN	150		6.00	84	74	77	72	9	32	29.94	29.97	13	OVC	140		10.00		83	63	70	51	14	27	29.74	29.77
16	SCT	NC		6.00	93	74	79	54	12	33	29.89	29.92	16	BKN	150		10.00		86	62	70	45	17	27	29.72	29.75
19	SCT	NC		8.00	93	73	79	52	7	31	29.88	29.91	19	OVC	060		10.00		78	54	64	43	22	32	29.81	29.84
22	SCT	NC		9.00	92	73	78	54	12	27	29.90	29.93	22	SCT	NC		10.00		71	52	60	51	17	34	29.92	29.95
SUNRISE: 0430				JUL 05				SUNSET: 1930				SUNRISE: 0434				JUL 11				SUNSET: 1928						
01	CLR	NC		9.00	89	73	78	59	9	28	29.89	29.92	01	SCT	NC		10.00		66	51	58	59	16	35	29.97	30.00
04	FEW	NC		9.00	86	72	76	63	12	28	29.89	29.92	04	SCT	NC		10.00		65	52	58	63	10	33	30.00	30.03
07	BKN	250		8.00	87	73	77	63	12	27	29.90	29.93	07	FEW	NC		10.00		66	29	49	25	13	32	30.07	30.09
10	BKN	250		10.00	90	73	78	58	14	31	29.88	29.91	10	SCT	NC		10.00		71	51	60	49	7	33	30.10	30.13
13	OVC	250		10.00	97	72	79	45	14	31	29.84	29.86	13	SCT	NC		10.00		78	53	63	42	8	31	30.09	30.12
16	SCT	NC		10.00	98	72	79	43	13	32	29.81	29.84	16	SCT	NC		10.00		82	49	63	32	5	34	30.08	30.11
19	SCT	NC		10.00	95	70	77	44	12	31	29.81	29.83	19	FEW	NC		10.00		80	50	63	36	12	01	30.11	30.14
22	CLR	NC		10.00	92	72	78	52	10	30	29.83	29.86	22	FEW	NC		10.00		73	52	61	47	8	06	30.18	30.21
SUNRISE: 0431				JUL 06				SUNSET: 1930				SUNRISE: 0435				JUL 12				SUNSET: 1928						
01	CLR	NC		10.00	89	71	77	55	9	30	29.83	29.86	01	CLR	NC		10.00		70	55	61	60	5	05	30.20	30.23
04	FEW	NC		10.00	87	70	75	57	7	27	29.83	29.85	04	CLR	NC		10.00		67	53	59	60	3	05	30.22	30.24
07	FEW	NC		8.00	88	71	76	57	10	27	29.85	29.88	07	SCT	NC		10.00		69	51	59	53	6	07	30.26	30.28
10	FEW	NC		8.00	93	73	79	52	13	29	29.81	29.84	10	BKN	250		10.00		74	55	63	52	12	05	30.24	30.27
13	FEW	NC		10.00	100	68	78	35	18	27	29.73	29.76	13	BKN	140		10.00		76	50	61	40	12	05	30.24	30.27
16	SCT	NC		10.00	101	72	80	39	17	26	29.68	29.71	16	OVC	140		10.00		76	48	60	37	12	12	30.24	30.27
19	FEW	NC		10.00	97	72	79	44	17	27	29.68	29.71	19	OVC	140		10.00		73	57	63	57	7	12	30.21	30.24
22	FEW	NC		10.00	94	68	76	43	17	27	29.74	29.77	22	OVC	070		10.00		70	56	62	61	9	11	30.22	30.24

OBSERVATIONS AT 3-HOURLY INTERVALS

NEW YORK (LGA AP), NY

JULY 1999

LGA

WBAN # 14732

HOUR (LST)	SATELLITE		WEATHER	TEMPERATURE °F			RELATIVE HUMIDITY (PCT)	WIND		PRESSURE (INCHES, HG)		HOUR (LST)	SATELLITE		WEATHER	TEMPERATURE °F			RELATIVE HUMIDITY (PCT)	WIND		PRESSURE (INCHES, HG)				
	SKY COVER	CEILING 100'S OF FT		OBSERVATION TIME (LST)	EFF CLD AMT Oktas	VISIBILITY (MILES)		DRY BULB	DEW POINT	WET BULB	SPEED (MPH)		DIRECTION TENS OF DEG	STATION		SEA LEVEL	SKY COVER	CEILING 100'S OF FT		OBSERVATION TIME (LST)	EFF CLD AMT Oktas	VISIBILITY (MILES)	DRY BULB	DEW POINT	WET BULB	SPEED (MPH)
SUNRISE: 0435				JUL 13				SUNSET: 1927				SUNRISE: 0440				JUL 19				SUNSET: 1924						
01	OVC	100		10.00	67	58	62	73	7	05	30.22	30.24	01	BKN	200		10.00	78	71	73	79	0	00	29.96	29.99	
04	BKN	075		10.00	65	56	60	73	9	08	30.18	30.21	04	SCT	NC		4.00	BR	76	71	73	85	5	05	29.94	29.97
07	BKN	250		10.00	66	52	58	61	15	07	30.18	30.21	07	CLR	NC		2.50	HZ	81	72	75	74	7	05	29.96	29.98
10	BKN	250		10.00	71	54	61	55	17	05	30.16	30.19	10	CLR	NC		5.00	HZ	91	69	76	49	6	VR	29.91	29.94
13	BKN	250		10.00	73	50	60	44	9	09	30.14	30.17	13	BKN	140		5.00	HZ	94	70	77	46	18	18	29.84	29.87
16	SCT	NC		10.00	76	52	62	43	10	05	30.12	30.15	16	OVC	140		4.00	HZ	83	72	75	70	10	07	29.84	29.86
19	SCT	NC		10.00	70	59	63	68	10	18	30.15	30.17	19	BKN	250		7.00		77	70	72	79	7	06	29.85	29.88
22	SCT	NC		10.00	68	58	62	70	9	20	30.17	30.20	22	OVC	035		7.00		78	72	74	82	10	06	29.91	29.94
SUNRISE: 0436				JUL 14				SUNSET: 1927				SUNRISE: 0441				JUL 20				SUNSET: 1923						
01	SCT	NC		10.00	67	59	62	76	6	21	30.18	30.21	01	BKN	100		10.00		76	67	70	74	7	04	29.91	29.94
04	BKN	250		10.00	67	60	63	79	0	00	30.18	30.21	04	BKN	120		10.00		74	60	65	62	10	05	29.93	29.96
07	BKN	250		10.00	69	60	64	73	5	01	30.21	30.24	07	BKN	250		10.00		74	61	66	64	9	06	29.99	30.02
10	BKN	130		10.00	75	60	66	60	7	04	30.22	30.24	10	BKN	250		10.00		78	59	66	52	13	05	30.03	30.06
13	OVC	130		10.00	74	60	65	62	10	17	30.21	30.24	13	BKN	250		10.00		84	58	68	41	8	07	30.01	30.04
16	BKN	140		10.00	75	59	65	58	6	VR	30.17	30.20	16	OVC	250		10.00		84	60	69	44	12	16	29.99	30.02
19	BKN	150		10.00	72	56	63	57	9	18	30.15	30.18	19	BKN	065		10.00		77	59	66	54	12	21	30.02	30.04
22	FEW	NC		10.00	70	56	62	61	5	21	30.16	30.19	22	SCT	NC		10.00		77	60	67	56	7	18	30.06	30.09
SUNRISE: 0437				JUL 15				SUNSET: 1926				SUNRISE: 0442				JUL 21				SUNSET: 1922						
01	BKN	140		10.00	69	57	62	66	0	00	30.14	30.17	01	BKN	065		10.00		76	60	66	58	6	19	30.08	30.11
04	SCT	NC		10.00	67	59	62	76	3	33	30.13	30.16	04	BKN	065		10.00		75	65	69	71	0	00	30.09	30.12
07	SCT	NC		10.00	70	56	62	61	7	33	30.15	30.18	07	BKN	070		10.00		72	61	65	69	14	05	30.14	30.16
10	FEW	NC		10.00	78	56	65	47	5	33	30.13	30.16	10	OVC	130		10.00		74	62	67	67	12	05	30.14	30.17
13	CLR	NC		10.00	85	54	66	35	5	VR	30.08	30.11	13	OVC	130		10.00		81	60	68	49	13	20	30.11	30.14
16	FEW	NC		10.00	88	57	69	35	16	20	30.04	30.07	16	BKN	140		10.00		78	63	68	60	17	17	30.08	30.11
19	CLR	NC		10.00	81	60	68	49	10	14	30.05	30.08	19	OVC	100		10.00		75	68	70	79	14	17	30.06	30.09
22	CLR	NC		10.00	79	62	68	56	9	21	30.07	30.10	22	BKN	140		10.00		75	67	70	76	12	20	30.05	30.08
SUNRISE: 0438				JUL 16				SUNSET: 1926				SUNRISE: 0443				JUL 22				SUNSET: 1922						
01	CLR	NC		10.00	79	60	67	52	9	25	30.07	30.10	01	OVC	050		10.00		75	64	68	69	14	23	30.05	30.08
04	CLR	NC		10.00	77	62	68	60	9	27	30.07	30.10	04	OVC	050		10.00		74	66	69	76	6	21	30.02	30.05
07	BKN	250		10.00	78	63	68	60	6	26	30.10	30.12	07	OVC	060		10.00		76	67	70	74	12	21	30.00	30.03
10	SCT	NC		9.00	88	65	73	46	0	00	30.10	30.13	10	OVC	090		10.00		78	64	69	62	12	19	29.99	30.01
13	SCT	NC		8.00	95	63	74	35	12	23	30.06	30.09	13	OVC	016		10.00		80	72	75	76	12	18	29.95	29.98
16	SCT	NC		6.00 HZ	93	68	76	44	14	17	30.03	30.06	16	OVC	031		10.00		78	71	73	79	13	18	29.90	29.93
19	BKN	250		6.00 HZ	92	67	75	44	12	21	30.03	30.06	19	OVC	032		8.00		77	72	74	85	8	15	29.88	29.91
22	SCT	NC		10.00	86	67	73	53	13	23	30.06	30.09	22	OVC	014		8.00		76	71	73	85	8	15	29.91	29.93
SUNRISE: 0438				JUL 17				SUNSET: 1925				SUNRISE: 0443				JUL 23				SUNSET: 1921						
01	CLR	NC		10.00	83	63	70	51	8	23	30.07	30.10	01	OVC	011		10.00		73	69	70	87	8	14	29.91	29.94
04	FEW	NC		10.00	80	63	69	56	7	24	30.08	30.11	04	OVC	012		10.00		73	69	70	87	3	22	29.87	29.90
07	SCT	NC		10.00	81	64	70	57	8	23	30.10	30.13	07	FEW	NC		6.00	HZ	76	70	72	82	0	00	29.89	29.92
10	SCT	NC		9.00	89	66	74	47	6	VR	30.09	30.12	10	FEW	NC		7.00		84	70	74	63	12	19	29.90	29.93
13	SCT	NC		7.00	96	66	76	37	9	20	30.04	30.07	13	FEW	NC		6.00	HZ	88	70	76	55	14	17	29.85	29.88
16	CLR	NC		6.00 HZ	91	70	76	50	15	17	30.01	30.03	16	SCT	NC		6.00	HZ	87	67	74	51	13	17	29.81	29.84
19	SCT	NC		6.00 HZ	91	69	76	49	8	20	30.01	30.04	19	BKN	250		7.00		82	69	73	65	13	19	29.79	29.82
22	SCT	NC		10.00	89	67	74	48	9	23	30.05	30.08	22	BKN	250		7.00		81	73	75	77	5	22	29.80	29.83
SUNRISE: 0439				JUL 18				SUNSET: 1924				SUNRISE: 0444				JUL 24				SUNSET: 1920						
01	SCT	NC		10.00	85	65	72	51	8	24	30.04	30.07	01	BKN	250		6.00	HZ	81	72	75	74	0	00	29.79	29.82
04	BKN	250		10.00	83	65	71	55	10	28	30.04	30.06	04	BKN	250		4.00	BR	75	73	74	94	6	07	29.79	29.82
07	FEW	NC		6.00 HZ	82	67	72	60	6	32	30.07	30.10	07	SCT	NC		6.00	HZ	82	68	73	63	0	00	29.79	29.81
10	BKN	250		6.00 HZ	89	66	74	47	3	34	30.05	30.08	10	BKN	250		7.00		91	68	75	47	9	24	29.76	29.79
13	SCT	NC		6.00 HZ	96	65	75	36	9	30	30.00	30.03	13	BKN	130		5.00	HZ	91	72	78	54	15	21	29.73	29.76
16	BKN	250		7.00	92	70	77	49	15	18	29.96	29.99	16	BKN	250		7.00		95	60	72	31	15	28	29.68	29.70
19	SCT	NC		5.00 BR	85	71	75	63	9	16	29.96	29.98	19	SCT	NC		8.00		91	62	72	38	9	23	29.67	29.70
22	SCT	NC		6.00 HZ	86	70	75	59	7	19	29.99	30.02	22	SCT	NC		7.00		88	73	78	62	12	22	29.70	29.73

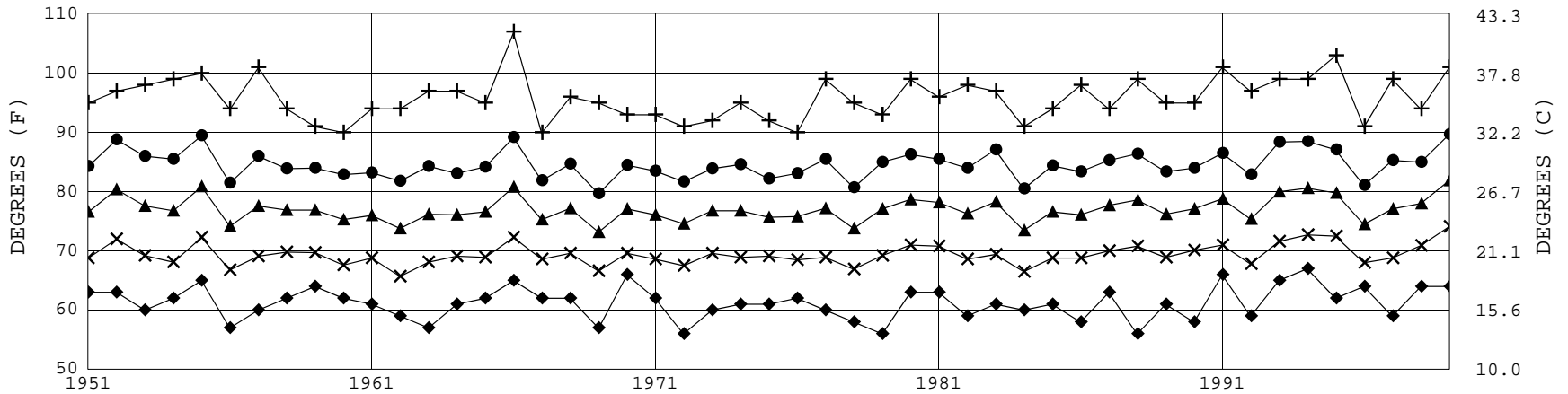
OBSERVATIONS AT 3-HOURLY INTERVALS

NEW YORK (LGA AP), NY

JULY 1999 LGA WBAN # 14732

HOUR (LST)	SKY COVER		CEILING 100'S OF FT	SATELLITE		VISIBILITY (MILES)	WEATHER	TEMPERATURE ° F			RELATIVE HUMIDITY (PCT)	WIND		PRESSURE (INCHES, HG)		HOUR (LST)	SKY COVER		CEILING 100'S OF FT	SATELLITE		VISIBILITY (MILES)	WEATHER	TEMPERATURE ° F			RELATIVE HUMIDITY (PCT)	WIND		PRESSURE (INCHES, HG)		
	SKY COVER	CEILING		OBSERVATION TIME (LST)	EFF CLD AMT Okltas			DRY BULB	DEW POINT	WET BULB		SPEED (MPH)	DIRECTION TENS OF DEG	STATION	SEA LEVEL		OBSERVATION TIME (LST)	EFF CLD AMT Okltas		DRY BULB	DEW POINT			WET BULB	SPEED (MPH)	DIRECTION TENS OF DEG		STATION	SEA LEVEL			
SUNRISE: 0445 JUL 25 SUNSET: 1919								SUNRISE: 0451 JUL 31 SUNSET: 1913																								
01	SCT	NC			10.00			86	66	73	51	8	30	29.67	29.70	01	CLR	NC				9.00			78	73	75	85	7	19	29.72	29.75
04	BKN	250			10.00			80	68	72	67	6	31	29.67	29.70	04	FEW	NC				7.00			77	73	74	88	6	19	29.72	29.75
07	SCT	NC			10.00			83	67	72	59	0	00	29.70	29.72	07	BKN	030				6.00	HZ		79	73	75	82	6	16	29.77	29.80
10	SCT	NC			10.00			87	67	73	51	8	33	29.71	29.74	10	BKN	029				6.00	HZ		83	72	75	70	5	VR	29.79	29.82
13	BKN	075			10.00			90	60	71	37	8	30	29.67	29.70	13	SCT	NC				8.00			86	72	76	63	14	20	29.77	29.80
16	SCT	NC			10.00			96	52	69	23	14	28	29.62	29.65	16	BKN	250				9.00			85	71	75	63	16	18	29.73	29.76
19	BKN	110			10.00			89	56	68	33	15	35	29.65	29.67	19	OVC	250				7.00			81	74	76	79	17	19	29.74	29.76
22	BKN	130			10.00			85	50	64	30	7	01	29.68	29.71	22	SCT	NC				8.00			80	76	77	87	10	19	29.74	29.77
SUNRISE: 0446 JUL 26 SUNSET: 1918								3-HOURLY OBSERVATION NOTES																								
01	BKN	095			10.00			82	61	69	49	7	33	29.68	29.71	Sky Cover is the amount of the sky obscured. CLR or SKC = 0, FEW = 1/8-2/8, SCT = 3/8-4/8, BKN = 5/8-7/8, OVC = 8/8, VV = Vertical Visibility = 8/8. Ceiling is reported in hundreds of feet above ground level for clouds at or below 12,000 feet. NC= No ceiling detected. & = Original observation contained additional weather elements. See page 3 for additional notes.																
04	BKN	140			10.00			78	59	66	52	7	33	29.67	29.70																	
07	SCT	NC			10.00			78	63	68	60	9	35	29.70	29.73																	
10	FEW	NC			10.00			83	63	70	51	8	34	29.69	29.72																	
13	SCT	NC			10.00			88	59	69	38	6	VR	29.68	29.71																	
16	BKN	070			10.00			91	61	71	36	7	36	29.67	29.70																	
19	BKN	085			10.00			86	65	72	50	7	17	29.68	29.71																	
22	SCT	NC			10.00			79	63	69	58	13	06	29.75	29.78																	
SUNRISE: 0447 JUL 27 SUNSET: 1917								SUMMARY BY HOUR																								
01	CLR	NC			6.00	HZ		77	71	73	82	0	00	29.75	29.78	AVERAGES																
04	CLR	NC			10.00			78	64	69	62	5	36	29.75	29.78	RESULTANT WIND (MPH)																
07	SCT	NC			10.00			79	61	68	54	3	32	29.79	29.82	HOUR (LST) CEILOMETER EFF CLD AMT DRY BULB DEW POINT WET BULB RELATIVE HUMIDITY PRESSURE (INCHES, HG) VISIBILITY (MILES) WIND SPEED (MPH) SPEED DIRECTION																
10	SCT	NC			10.00			86	64	72	48	14	31	29.79	29.81	01 78 65 70 66 29.92 29.95 9.19 7 3 28																
13	SCT	NC			10.00			91	62	72	38	7	VR	29.75	29.78	02 77 65 69 68 29.92 29.95 9.10 7 3 27																
16	SCT	NC			10.00			94	59	71	31	5	35	29.72	29.75	03 76 65 69 69 29.91 29.94 9.06 7 2 31																
19	SCT	NC			10.00			88	66	73	48	7	VR	29.74	29.77	04 76 64 69 69 29.92 29.95 9.00 7 3 30																
22	SCT	NC			10.00			82	70	74	67	6	33	29.79	29.82	05 75 64 68 70 29.93 29.96 8.40 7 3 32																
SUNRISE: 0448 JUL 28 SUNSET: 1916								06 76 63 68 68 29.94 29.97 8.33 7 3 31								07 77 63 68 64 29.94 29.97 8.39 8 2 32																
01	FEW	NC			10.00			80	64	70	58	3	04	29.80	29.83	08 78 63 69 61 29.95 29.98 8.52 8 2 33																
04	FEW	NC			10.00			79	63	69	58	0	00	29.80	29.83	09 80 64 70 58 29.94 29.97 8.56 8 4 33																
07	SCT	NC			10.00			81	60	68	49	7	31	29.82	29.85	10 82 64 70 54 29.94 29.97 8.74 9 3 32																
10	FEW	NC			10.00			87	57	68	36	13	28	29.82	29.85	11 84 63 71 51 29.93 29.96 8.81 10 3 31																
13	FEW	NC			10.00			92	56	69	30	14	26	29.76	29.78	12 86 63 71 48 29.93 29.96 8.80 9 3 27																
16	SCT	NC			10.00			95	57	71	28	8	31	29.69	29.72	13 86 63 71 47 29.91 29.94 8.52 11 5 23																
19	BKN	250			10.00			92	57	70	31	10	36	29.70	29.72	14 87 63 71 46 29.90 29.93 8.45 11 5 22																
22	BKN	110			10.00	-TSRA		85	64	71	50	20	32	29.75	29.78	15 87 63 72 46 29.89 29.91 8.58 11 5 22																
SUNRISE: 0449 JUL 29 SUNSET: 1915								16 87 63 71 47 29.88 29.91 8.42 12 5 21								17 86 63 71 49 29.87 29.90 8.55 12 4 21																
01	FEW	NC			10.00			79	64	69	60	6	05	29.71	29.74	18 85 65 72 54 29.87 29.90 8.81 12 5 20																
04	SCT	NC			10.00			78	60	67	54	5	09	29.69	29.72	19 83 65 71 57 29.88 29.91 8.68 11 4 21																
07	OVC	140			10.00			78	60	67	54	9	06	29.69	29.72	20 82 65 71 60 29.89 29.92 9.00 10 4 20																
10	OVC	140			10.00			80	65	70	60	9	07	29.68	29.71	21 81 65 71 60 29.91 29.94 9.32 9 3 21																
13	BKN	200			8.00			88	64	72	45	7	10	29.64	29.67	22 80 66 71 63 29.91 29.94 9.29 10 3 23																
16	FEW	NC			7.00			88	65	73	46	13	16	29.60	29.63	23 80 65 70 63 29.91 29.94 9.35 9 3 24																
19	BKN	250			10.00			82	68	73	63	12	16	29.61	29.63	24 79 65 70 64 29.91 29.94 9.13 8 3 26																
22	CLR	NC			9.00			79	72	74	79	6	07	29.64	29.67																	
SUNRISE: 0450 JUL 30 SUNSET: 1914								01 75 73 74 94 6 03 29.64 29.67								04 74 73 73 97 5 05 29.62 29.65																
01	SCT	NC			5.00	BR		75	73	74	94	6	03	29.64	29.67	07 76 73 74 91 7 06 29.65 29.68																
04	SCT	NC			4.00	BR		74	73	73	97	5	05	29.62	29.65	10 83 68 73 61 7 04 29.66 29.69																
07	SCT	NC			5.00	BR		76	73	74	91	7	06	29.65	29.68	13 89 71 76 55 8 16 29.63 29.66																
10	SCT	NC			8.00			83	68	73	61	7	04	29.66	29.69	16 90 70 76 52 12 17 29.61 29.64																
13	SCT	NC			8.00			89	71	76	55	8	16	29.63	29.66	19 81 73 75 77 14 19 29.67 29.70																
16	FEW	NC			9.00			90	70	76	52	12	17	29.61	29.64	22 80 71 74 74 9 17 29.72																
19	BKN	250			8.00			81	73	75	77	14	19	29.67	29.70																	
22	BKN	250			10.00			80	71	74	74	9	17	29.72	29.75																	

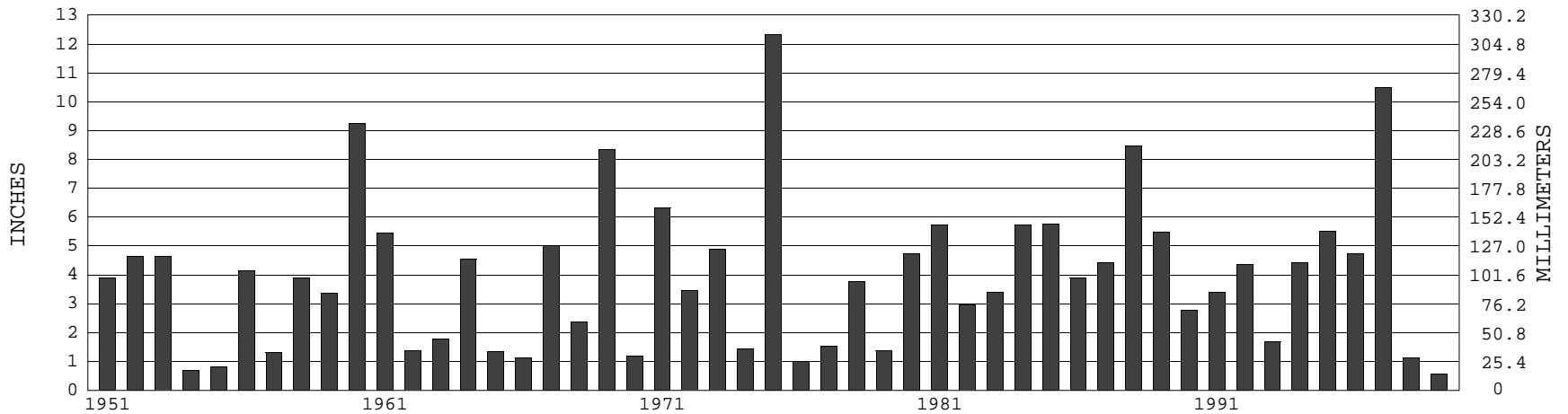
NEW YORK (LGA AP), NY JULY TEMPERATURES



+ Extreme Max. ● Mean Max. ▲ Mean × Mean Min. ◆ Extreme Min.

Long-Term (1951-1999) Mean: 77.0 1961-1990 Normal: 76.4

NEW YORK (LGA AP), NY JULY PRECIPITATION



Long-Term (1951-1999) Mean Monthly Total: 3.98

1961-1990 Normal: 4.07



JULY 1999
NEW YORK (LGA AP), NY

LOCAL CLIMATOLOGICAL DATA

NOAA, National Climatic Data Center

I certify that this is an official publication of the National Oceanic and Atmospheric Administration (NOAA). It is compiled using information from weather observing sites operated by NOAA – National Weather Service / Department Of Transportation – Federal Aviation Administration and received at the National Climatic Data Center (NCDC), Asheville, North Carolina 28801.

DIRECTOR

NOTICE

Effective July 1, 1996, the National Weather Service & Federal Aviation Administration began using the METAR format for Hourly Observations.

We welcome your questions or comments, please contact us at
 828–271–4800 (voice), 828–271–4876 (fax),
 828–271–4010(TDD)
 or orders@ncdc.noaa.gov
 Local Climatological Data is available at www.ncdc.noaa.gov

For address correction, please return a photocopy of this page to Subscription Services indicating changes

NATIONAL CLIMATIC DATA CENTER
 151 PATTON AVE RM 120
 ASHEVILLE, NC 28801 –5001

OFFICIAL BUSINESS. PENALTY FOR PRIVATE USE \$300

FIRST CLASS
 POSTAGE AND FEES PAID
 NOAA
 PERMIT G–19