

Kenya Natural Disaster Profile

Basic Facts:

Area: 582,650 km²

Coastline: 536 km

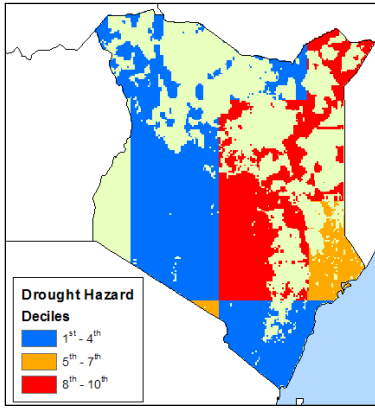
Population: 32,021,856

GDP (PPP): \$33.03 billion

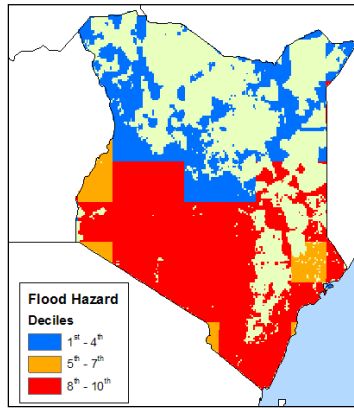
GDP Per Capita: \$1,000

Population Below Poverty Line: 50%

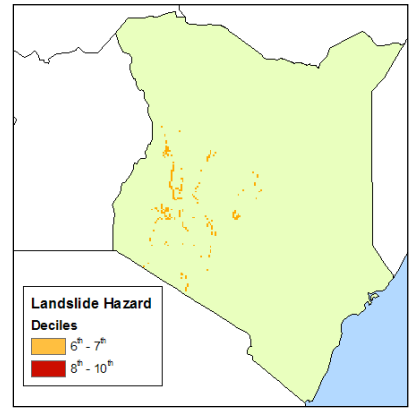
Natural Disaster Risk Hotspots:



Droughts

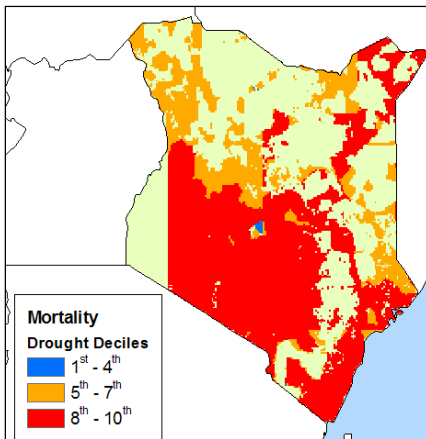


Floods

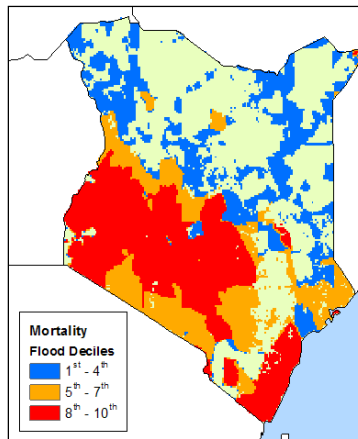


Landslides

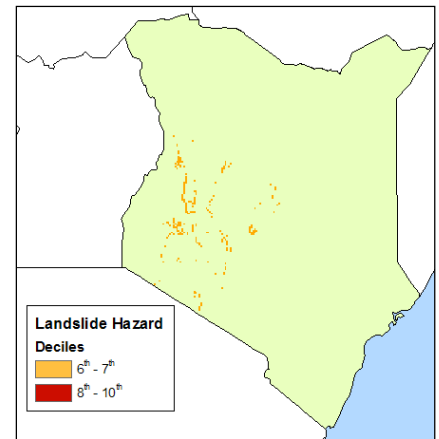
Natural Disaster Risk Hotspots (Weighted by Mortality)



Droughts



Floods

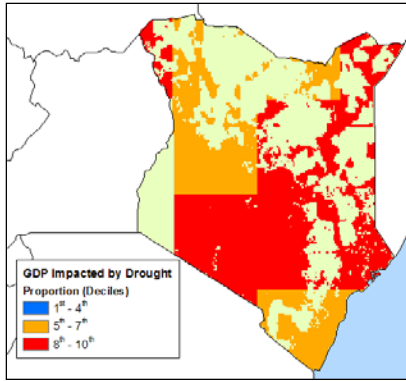


Landslides

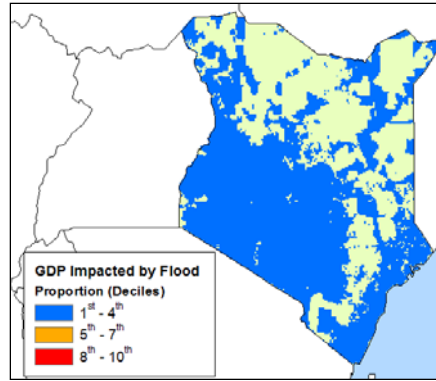
EM-DAT Information (1964-2004):

Disaster	# of Events	Total Killed	Avg. # Killed	Total Affected	Avg. # Affected
Cyclone	1	50	50	0	0
Drought	11	165	15	16,312,600	1,482,964
Earthquake	1	0	0	0	0
Flood	17	524	31	1,203,508	70,795
Volcano	-	-	-	-	-

Natural Disaster Risk Hotspots (Weighted by Proportion of GDP Impacted)

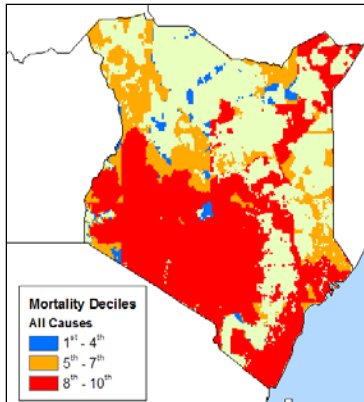


Droughts

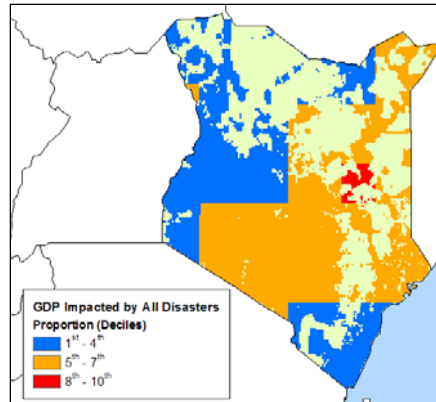


Floods

Multi-Hazard Disaster Risk Hotspots (All Hazards combined and weighted by Mortality and Proportion of GDP Impacted)

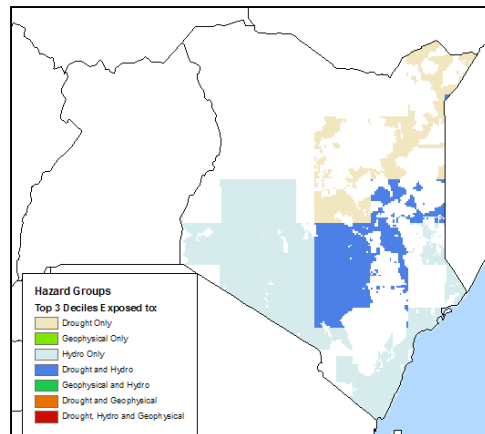


Mortality



GDP

Multi-Hazard Disaster Risk Hotspots by Hazard Groups (Top Three Deciles)



Observations

Droughts and floods are the most significant hazards affecting Kenya. The maps exclude hazard impacts in non-agricultural areas where small populations were masked out of the maps. Although droughts and floods show large impacts when weighted by mortality, the effects of droughts are more severe, particularly in the north. When weighted by GDP impact, droughts pose a substantially higher risk than floods throughout the country.