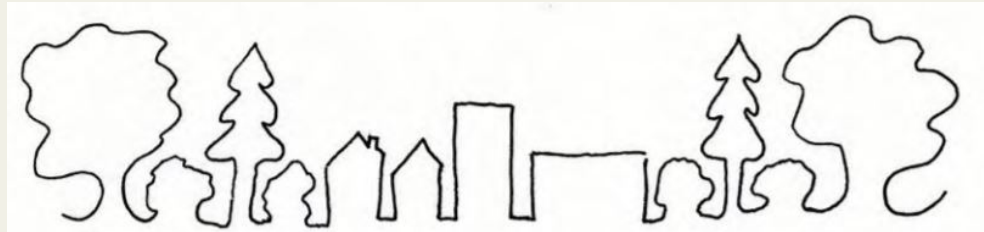


ROCKLAND P.L.U.S PLANNING LAND USE WITH STUDENTS



Visit #2

Considering Your Community & Important Planning Elements



Assess Both Your Local Community & The County

Score of 5 is highest



ROCKLAND P.L.U.S.
PLANNING LAND USE WITH STUDENTS

Score of 1 is lowest

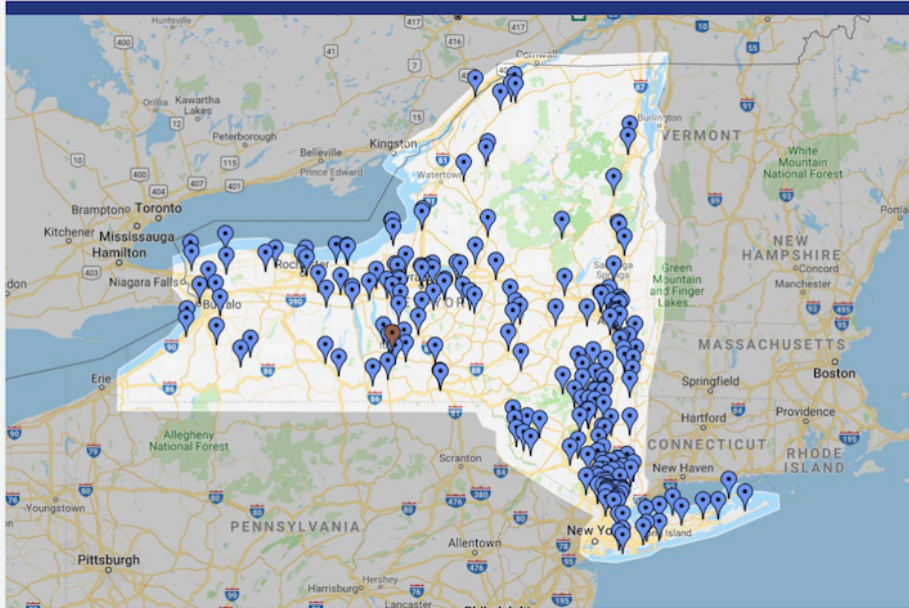
COMMUNITY ASSESSMENT FORM: Team activity: to be completed in small groups in class.

Think about the village/town in which your site is located and consider its strengths and weaknesses. How can your site improve the whole community? You can use your own knowledge of the community and check the County website - <https://rocklandgov.com>

Rate the features of your community, scoring **Strengths** as 1 (mainly absent) to 5 (well represented). Support your number choice with a brief explanation. Once completed, brainstorm and look for ways to improve your community focusing on your lowest rankings.

Community Feature – How does your community rank in these categories?	Community Strengths Rank: From 1 - 5	Comments & Examples of Strengths & Challenges In Local Community	Rockland County Strengths Rank: From 1 - 5	Comments & Examples of Strengths & Challenges In Rockland County
Community Character: <i>Places of Historical Significance/ Arts/ Theatres</i>				
Demographic Diversity: <i>A mix of diverse people and cultures in the community living and working together</i>				
Housing/Affordability/Mix of Housing: <i>Condos/ Apartments/ Single Family Homes/ Options for all stages - Singles/ Families/ Retired</i>				
Transportation/Accessibility/Walkability: <i>Trains & Buses/ Complete Streets/ Sidewalks/ Safe Roads/ Bike Trails/ Safe Crosswalks/ Walking Paths connect to stores & services</i>				
Health & Wellness: <i>Healthy Food Choices/ Farmers Markets/ Exercise opportunities/ Preventive treatment/ Accessible Clinics & Hospitals / Health Education available</i>				
Social/Recreation: <i>Opportunities across ages & prices: children/teens/adults/seniors</i>				
Wilderness: <i>Undeveloped Areas/Open Space to parkland</i>				
Environmental Awareness, Water & Energy Conscious <i>Community Awareness of Stream Protection/ Water Conservation & Management/ Recycling/ Energy Conscious & Energy Savings (i.e. solar; automatic light switch off)/ Green Building requirements</i>				
Education & Employment <i>Schools available for all stages (pre-schools through college level; internships) and a range of opportunities from entry level to professional jobs.</i>				
Safety: <i>Street Lighting/ Fire and Police departments/ Residents Feel Safe in their community</i>				

New York State: Climate Smart Communities:





State Support for Local Climate Action

Climate Smart Communities (CSC) is a New York State program that helps local governments take action to reduce greenhouse gas emissions and adapt to a changing climate. The program offers free technical assistance, grants, and rebates for electric vehicles.

Registered communities have made a commitment to act by passing the CSC pledge. **Certified** communities are the foremost leaders in the state; they have gone beyond the CSC pledge by completing and documenting a suite of actions that mitigate and adapt to climate change at the local level.

[> LEARN MORE](#)

Participating Climate Smart Communities:

 REGISTERED COMMUNITIES	Rockland has 8 registered	291	 BRONZE CERTIFIED COMMUNITIES	Rockland has 2 Bronze	32
 PEOPLE LIVING IN CLIMATE SMART COMMUNITIES		8,766,236	 SILVER CERTIFIED COMMUNITIES		2

<https://climatesmart.ny.gov>

New York State: Energy Research & Development Authority NYSERDA Designated Clean Energy Communities

Designated Clean Energy Communities Map

The communities highlighted on this map are demonstrating their commitment to clean energy by participating in the Clean Energy Communities Program. A community must complete at least four High Impact Actions to earn the Clean Energy Communities designation.

573

Participating Communities

Rockland has 7 communities participating

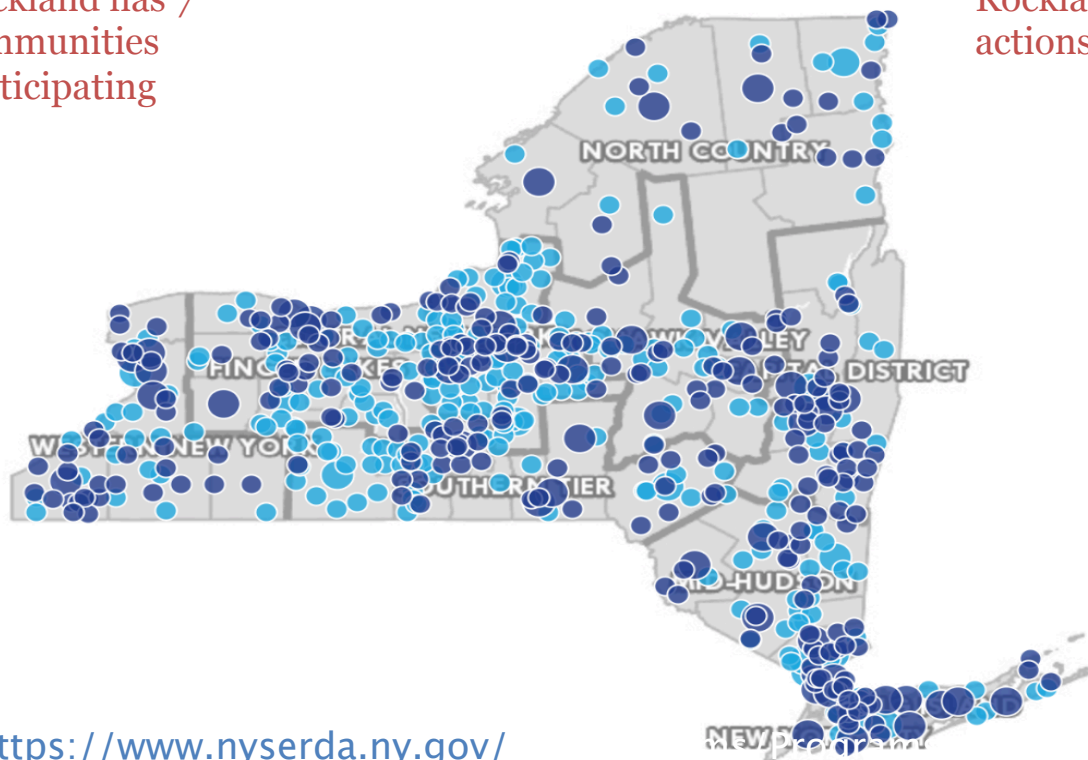
301

Designated Communities

1,686

Actions Completed

Rockland has 17 actions completed



Filter by High Impact Action
(All) ▾

Designation Status
■ Designated CEC
■ Participating

Community Size
● Small Community
● Large Community

ACTIONS:
Piermont - 5
Village of Nyack - 4
Orangetown - 3
Wesley Hills - 2
South Orangetown - 1
Clarkstown - 1
Kaser - 1

<https://www.nyserdera.ny.gov/>

Planning Concepts & Planning Cards



Vegetation and natural areas:

- Provide habitat
- Reduce polluted runoff
- Clean the air
- Cool the air
- More singing birds & plants leading to less:
 - ✦ Depression
 - ✦ Anxiety
 - ✦ Stress
- Fewer emergency asthma attacks
- Reduction in crime and violence



Planning Concepts & Planning Cards

\$ Environment **W**
Enhancing Resources



Integrate Wildlife Habitat with Green Space **2**

What is it:

- Creating a wildlife habitat such as using native wetland plants to enhance an existing wetland, or creating a small pond in your dedicated green space.
- Creating connections to existing water ways, and streams, and planting native plants with winter berries for native birds

Fast Facts:

- Helps reverse the effects of habitat loss due to development
- Helps reinstate native species where invasive ones have taken over
- Attracts pollinators critical to habitat

Community Benefits:

- Aesthetically pleasing
- Bring wildlife back to the area and enjoy the ecosystem functions they provide

Use of the Planning Cards

- The borders are color coded by category
- The front titles can be the same but the backs are different planning tools with
 - Definition
 - Fast facts
 - Benefit/cost savings
- The categories often cross reference to other categories with a small letter on the upper right on the photo side.
- The upper left includes a dollar sign, representing a relative cost for inclusion.

\$ Environment **W**
Enhancing Resources



Conservation of Trees and Plants on Property **1**

What is it:

- Protecting and preserving trees and plants that are already on the property

Fast Facts:

- The trees and plants that are already located on the property are part of the ecosystem of that area and provide important benefits like carbon storage, shade, habitat, and slow water absorption

Community Benefits:

- Aesthetically pleasing
- Trees provide natural shading and can reduce the "heat-island" effect from extensive paved areas
- Trees and plants provide 'ecosystem services' such as nutrient cycling, soil preservation, and habitat for wildlife

Planning Concepts & Planning Cards



Permeable Pavement



Improved water absorption using plant buffers in parking areas & streetscapes



Vegetation Islands for 'run on'

Planning Concepts & Planning Cards



Rain Barrels



Green Roofs



Rain Gardens



Maintaining Original Trees & Shrubs

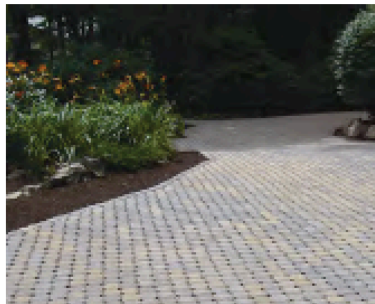
Planning Concepts & Planning Cards



\$\$

Pervious Pavers

T



Pervious Pavers

③

What is it:

- Paving material that allows stormwater to be absorbed through its surface and put back into the ground below, rather than run-off into a storm drain system.
- Can be used to pave sidewalks, parking lots, bike paths, etc.

Fast Facts:

- Decreased run-off means decreased soil erosion and less sediments and pollution winding up in watersheds
- Increases infiltration of water

Cost Savings:

- Can soak up as much as 70% to 80% of annual rainfall.
- No need to put in detention pond or other storm management solution—more property to work with.

\$\$

Collecting Rainwater

E



Rain Gardens, Run-on Stormwater Retention, Rain Barrels

④

What is it:

- Methods for slowing and decreasing storm water run-off and allows natural infiltration of the water
- Features allow rain water to be returned to the ground, rather than run-off into streets and into streams

Fast Facts:

- Decreased run-off means less soil erosion, fewer sediments and less pollution ending up in waterways
- Our groundwater is recharged

Cost Savings:

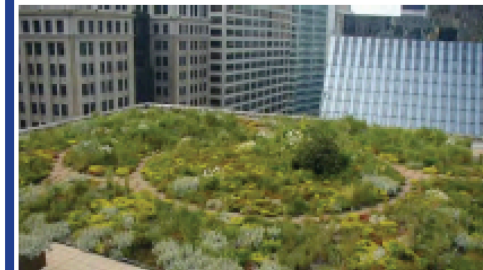
- Aesthetically pleasing way to manage storm water, can increase property value
- Reduce hazards such as flooding brought on by storm water

\$\$\$

Green Roof

E

E



Green Roof

⑤

What is it:

- Roof of a building that is specifically prepared to allow a plant covering to add greenspace, cool the building, and collect water to reduce run off

Fast Facts:

- Absorbs rainwater, provides insulation for building, creates habitats for wildlife, can help lower air temperature in urban areas

Cost Savings:

- Reduction in energy usage and heating and cooling costs
- Reduction of stormwater runoff, plus some local governments give a stormwater tax reduction for green roofs
- Increased durability of roof itself

Planning Concepts & Planning Cards



**CARPOOL
& HYBRID
PARKING**

Spaces that are walkable, bikeable, and encourage fuel conservation!

Encourage reduced energy use!

Solar to fuel our homes & businesses!



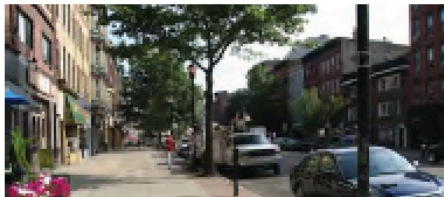
Natural sunlight!

Conserving energy through up front planning

Planning Concepts & Planning Cards

BOTH IDENTIFY APECTS OF COMPLETE STREETS

\$\$ Transit Making Connections (E)(E)



Walkable Sidewalks (3)

What is it:

- Wide and spacious sidewalks encourage more pedestrian use

Fast Facts:

- Walkable sidewalks are beneficial for community members of all ages. Walking is good for your health, it reduces pollution from driving, it is less costly and can be more social.

Community Benefits:

- Increase accessibility of the community--a car is not required to get everywhere
- Safer sidewalks and roadways
- Cleaner air/ less emissions from decreased car usage
- Aesthetically pleasing
- Increase the overall sense of connection and community in a town

\$\$\$ Transit Making Connections (E)(E)



Transit Connections (4)

What is it:

- Bus and train routes that make transit easy for people to navigate and travel within and between towns/ the county without relying on a car
- At train stations there are also bus stops and at bus stops there is bike storage, with connections to bike lanes, and walkable sidewalks

Fast Facts:

- Overall, public transit saves the U.S. 4.2 billion gallons of gasoline annually (American Public Transit Association)

Community Benefits:

- Cleaner air/ fewer emissions from the decreased individual car usage
- Easier for community members to get to school, work, doctor's appointments, etc.

\$\$\$ Using the Sun (2)



Rooftop Solar Panels and Daylighting Buildings (2)

What is it:

- Solar panels on the roof allow the sun to be used for energy
- Daylighting buildings is the use of large, strategically placed windows to take advantage of the sun's light throughout the day

Fast Facts:

- Enough sunlight falls on the earth's surface every hour to meet world energy demand for an entire year.
- Daylight is beneficial to mental health

Cost Savings:

- reduce dependence on non-renewable resources for energy
- daylighting also reduces electricity bills as it gets rid of the need for lights to be on inside during the day

How can we plan sustainably – Climate Smart & Energy Smart? Creating change through innovation



<http://www.tinydiner.com>



Tiny Construction

How can we plan sustainably – Climate Smart & Energy Smart? Creating change through innovation



Student Built Tiny Construction at Irvington H.S.

How can we plan sustainably – Climate Smart & Energy Smart? Creating change through innovation



Photo Google Maps

Repurposing for New Uses: The Filling Station & The Market, Rte. 9, Palisades

How can we plan sustainably – Climate Smart & Energy Smart? Creating change through innovation



Net Zero Design

- Reduction
- Reclamation
- Absorption
- Generation



<https://building.agu.org/about-the-project/net-zero-design/>

Net Zero Building, AGU Science Organization in D.C.

How can we plan sustainably – Climate Smart & Energy Smart? Creating change through innovation



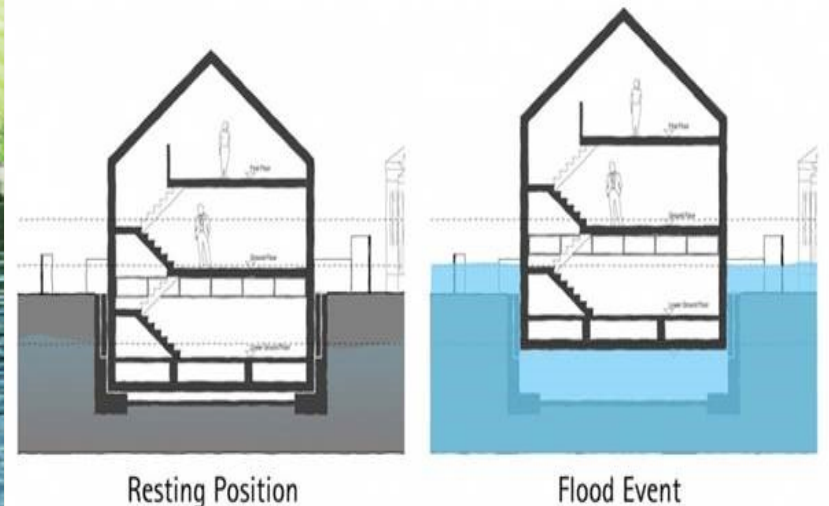
Bus from Adelaide, Australia

(L) Bus Rapid Transit Design (R) 1st Solar Electric Bus

How can we plan sustainably – Climate Smart & Energy Smart? Creating change through innovation



Amphibious House
near Marlow, River
Thames, U.K.



Resilient waterfront design

Your Site Information



- Consider your site location & orientation
- What are the community/county strengths you want to build on or link to
- What are the weaknesses you identified that you can help address
- Consider the history & if there are pieces you can amplify or preserve
- S.E.E. the space – Social, Economic and Environmental Strengths & Challenges