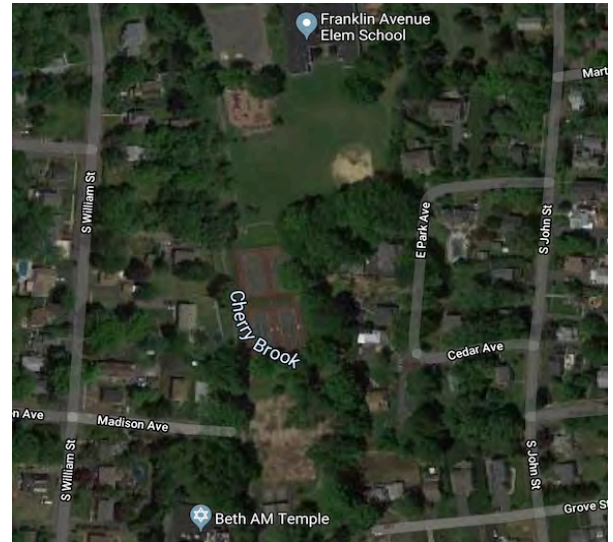
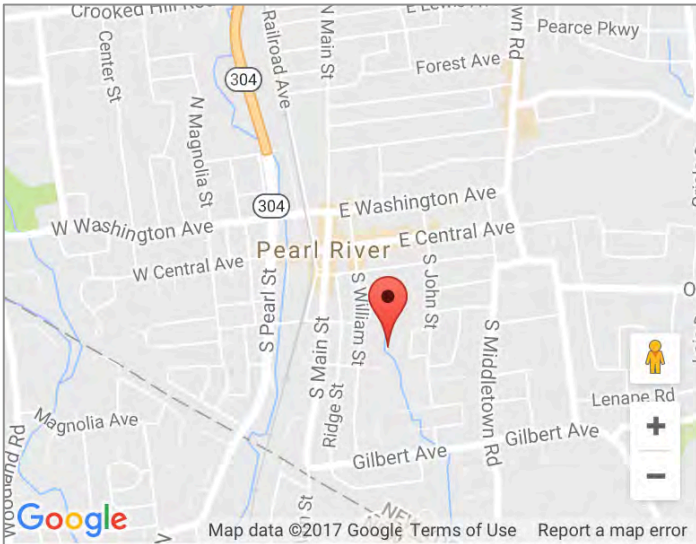




## CHERRY BROOK PARK, PEARL RIVER



### LOCATION

Cherry Brook Park is located near Beth Am Temple and Franklin Avenue Elementary School. It has tennis, handball and basketball courts, a roller rink walking path and a children's playground. Located in the headwaters of

Cherry Brook it is what is referred to as a 'pocket park', a small neighborhood park linked to a school and without major street access. Entry to the park is on Madison Ave. adjacent to Franklin Avenue School on the path in the photo.



### WHAT IS NEEDED?

What does this community need? Currently the park is between a school, a temple and close to the library. It currently has just 4 tennis courts a small ball diamond and an empty space where the multipurpose sport surface was removed. Is there something that could be done at the park to encourage library users to venture to the park, or members of the Temple to use the park for specific events or activities?

### HISTORY



Cherry Brook Park is one of 7 parks and a 27 hole golf course in Pearl River. It is situated at the headwaters of Cherry Brook, one of many brooks and streams that run through the town. At its founding in the early 1870s Pearl River was a section of land that made up of woods and swamps, and originally called Muddy Creek. It had 5 different sections, Middletown, Sickletown, Pascack, Muddy Brook and Naurashaun. Pearl River may have been named for the pearly finds in Muddy Brook mussels, or it may have been renamed merely to enhance its image. The original founder, Julius Braunsdorf, a German immigrant, donated space in the middle of town for the NJ/NY railroad to come through to Nanuet.



Search this area

# Cherry Brook Park

