

# Mapping Human Migration and Meningitis in Niger

T. Timberlake<sup>1</sup>, S. Adamo<sup>2</sup>, S. Trzaska<sup>3</sup>

<sup>1</sup> Columbia College. <sup>2</sup> Center for International Earth Science Information Network. <sup>3</sup> International Research Institute for Climate and Society.

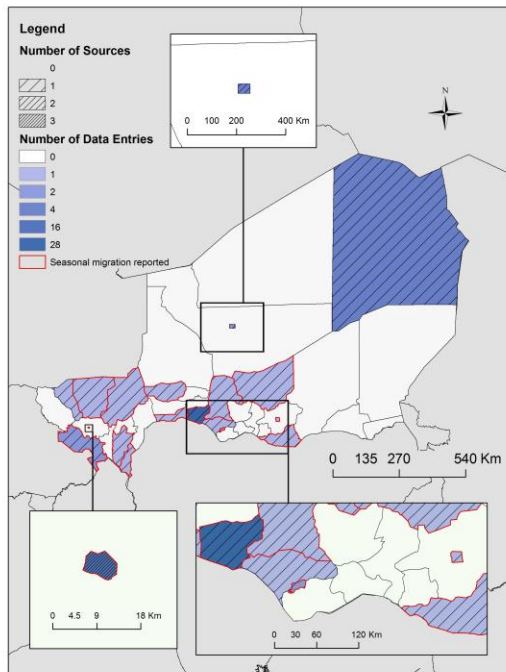


Figure 1. Bibliographic database's coverage of migration by district in Niger

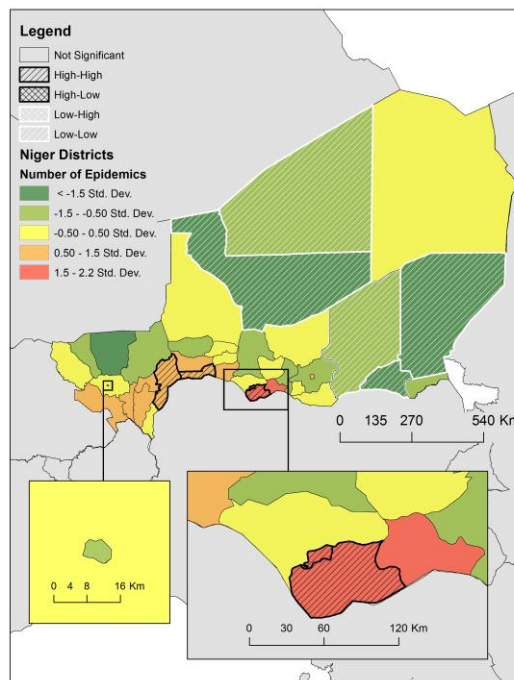


Figure 2. Mobile population percentage by district with LISA

Moran's I: 0.314302 (p-value: 0.000524)

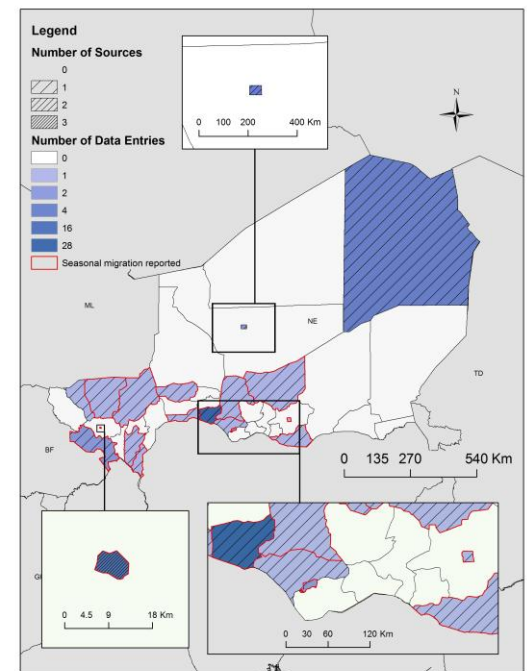


Figure 3. Number of epidemics (standard deviation from the mean) with LISA

Moran's I: 0.3965 (p-value: 0.000044)