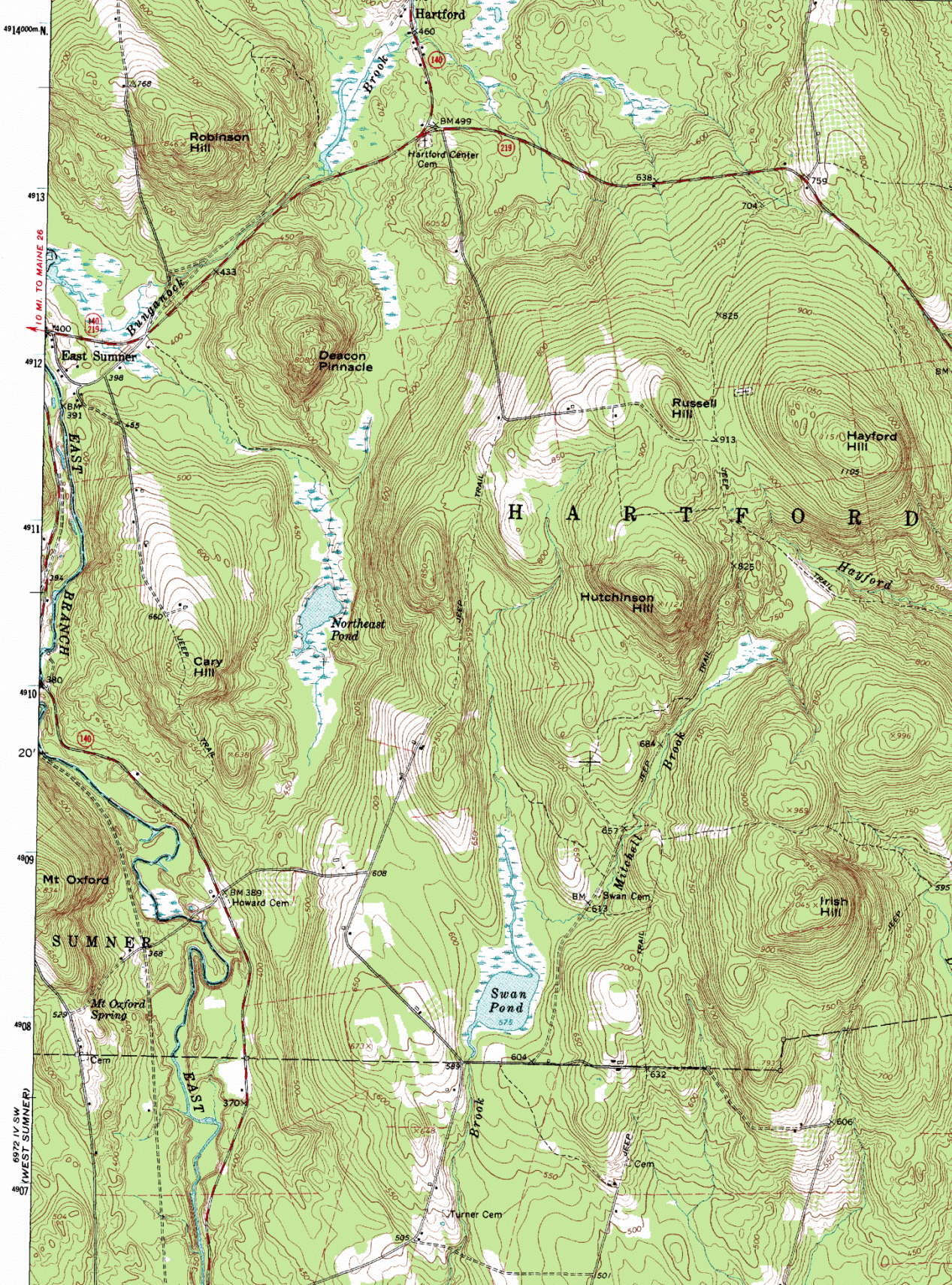


UNITED STATES
DEPARTMENT OF THE INTERIOR
GEOLOGICAL SURVEY

8972 IV NW
(WORTHLEY POND)

70° 22' 30" 44° 22' 30" 391000m E 392 20' 394 395 6972 IV NE (CANTON)

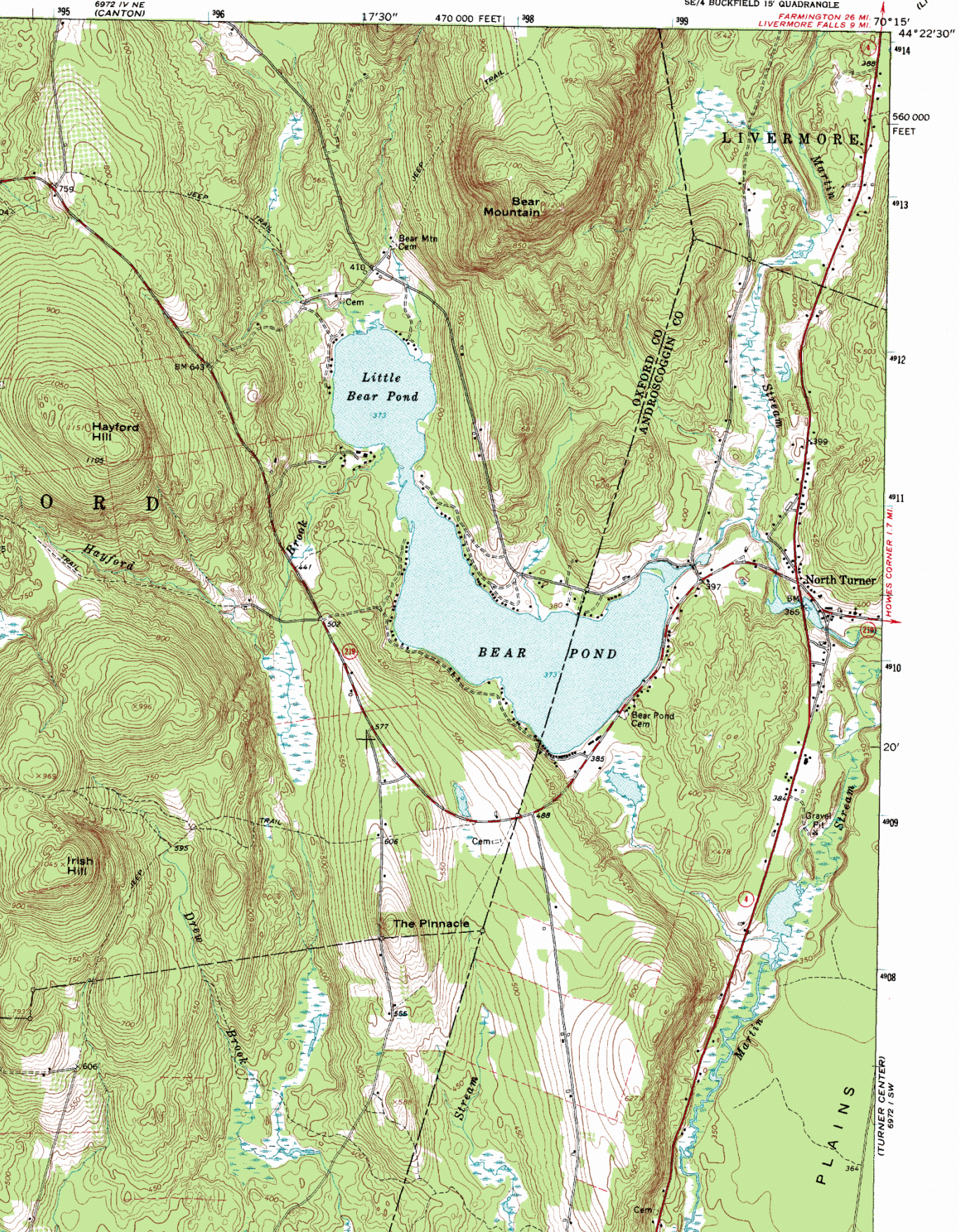


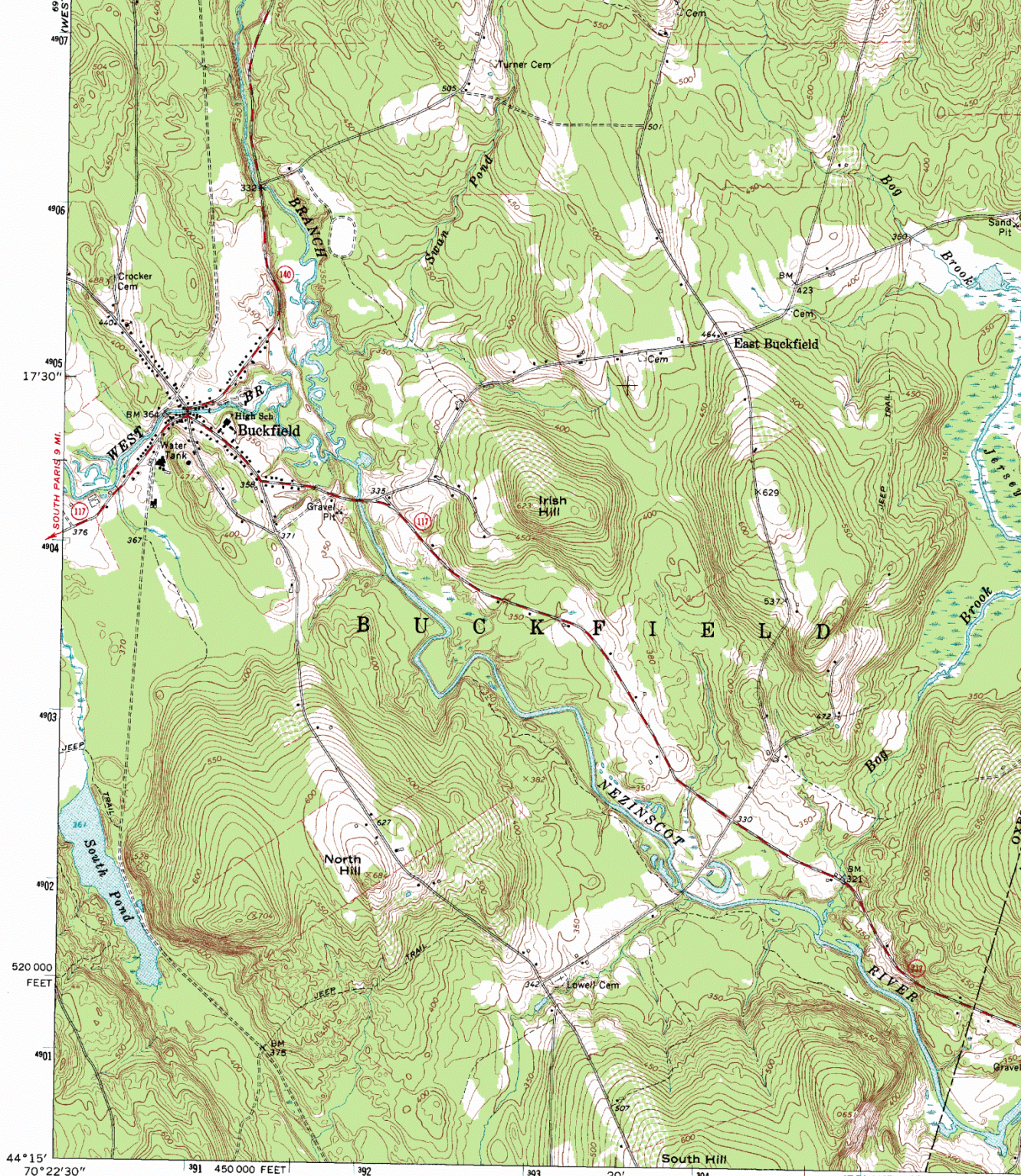
Buckfield_Maine UR

BUCKFIELD QUADRANGLE
MAINE
7.5 MINUTE SERIES (TOPOGRAPHIC)

SE/4 BUCKFIELD 15' QUADRANGLE
FARMINGTON 26 MI.
LIVERMORE FALLS 9 MI.

49°15' N
LIVERMORE FALLS





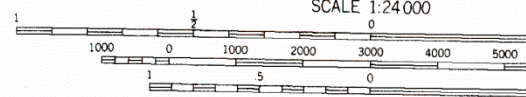
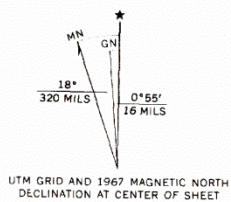
(POLAND 1:62 500)
6972 III

Mapped, edited, and published by the Geological Survey
Control by USGS and USC&GS

Topography by photogrammetric methods from aerial
photographs taken 1964. Field checked 1967

Polyconic projection. 1927 North American datum
10,000-foot grid based on Maine coordinate system, west zone
1000-meter Universal Transverse Mercator grid ticks,
zone 19, shown in blue

Fine red dashed lines indicate selected fence and field lines where
generally visible on aerial photographs. This information is unchecked



CONTOUR INTERVAL 10 FEET
DATUM IS MEAN SEA LEVEL

THIS MAP COMPLIES WITH NATIONAL MAP ACCURACY STA
FOR SALE BY U. S. GEOLOGICAL SURVEY, WASHINGTON
A FOLDER DESCRIBING TOPOGRAPHIC MAPS AND SYMBOLS IS AVAIL

Buckfield_Maine LL



(POLAND 1:62 500)
6972 III
SCALE 1:24 000

0 1 MILE
2000 3000 4000 5000 6000 7000 FEET

0 1 KILOMETER

CONTOUR INTERVAL 10 FEET
DATUM IS MEAN SEA LEVEL



QUADRANGLE LOCATION

CONFORMS WITH NATIONAL MAP ACCURACY STANDARDS
GEOLOGICAL SURVEY, WASHINGTON, D. C. 20242
SYMBOLS AND ABBREVIATIONS LIST IS AVAILABLE ON REQUEST

INTERIOR—GEOLOGICAL SURVEY, WASHINGTON, D. C.—1989
AUBURN (U.S. 202) 11 MI
16 MI. TO MAINE TURNPIKE

ROAD CLASSIFICATION

Primary highway, all weather, hard surface	Light-duty road, all weather, improved surface
Secondary highway, all weather, hard surface	Unimproved road, fair or dry weather
	State Route

BUCKFIELD, MAINE
SE/4 BUCKFIELD 15' QUADRANGLE
N4415—W7015/7.5

Buckfield_Maine LR