

# Lake\_Auburn\_East\_Maine UL

UNITED STATES  
DEPARTMENT OF THE INTERIOR  
GEOLOGICAL SURVEY

6972 I SE  
(LAKE AUBURN)





# Lake\_Auburn\_East\_Maine UR

LAKE AUBURN EAST QUADRANGLE  
MAINE—ANDROSCOGGIN CO  
7.5 MINUTE SERIES (TOPOGRAPHIC)  
NW/4 LEWISTON 15' QUADRANGLE

897.1 NE  
(M 24.1E)

6972.1 SW  
(TURNER CENTER)

TURNER CENTER 2.5 MI.

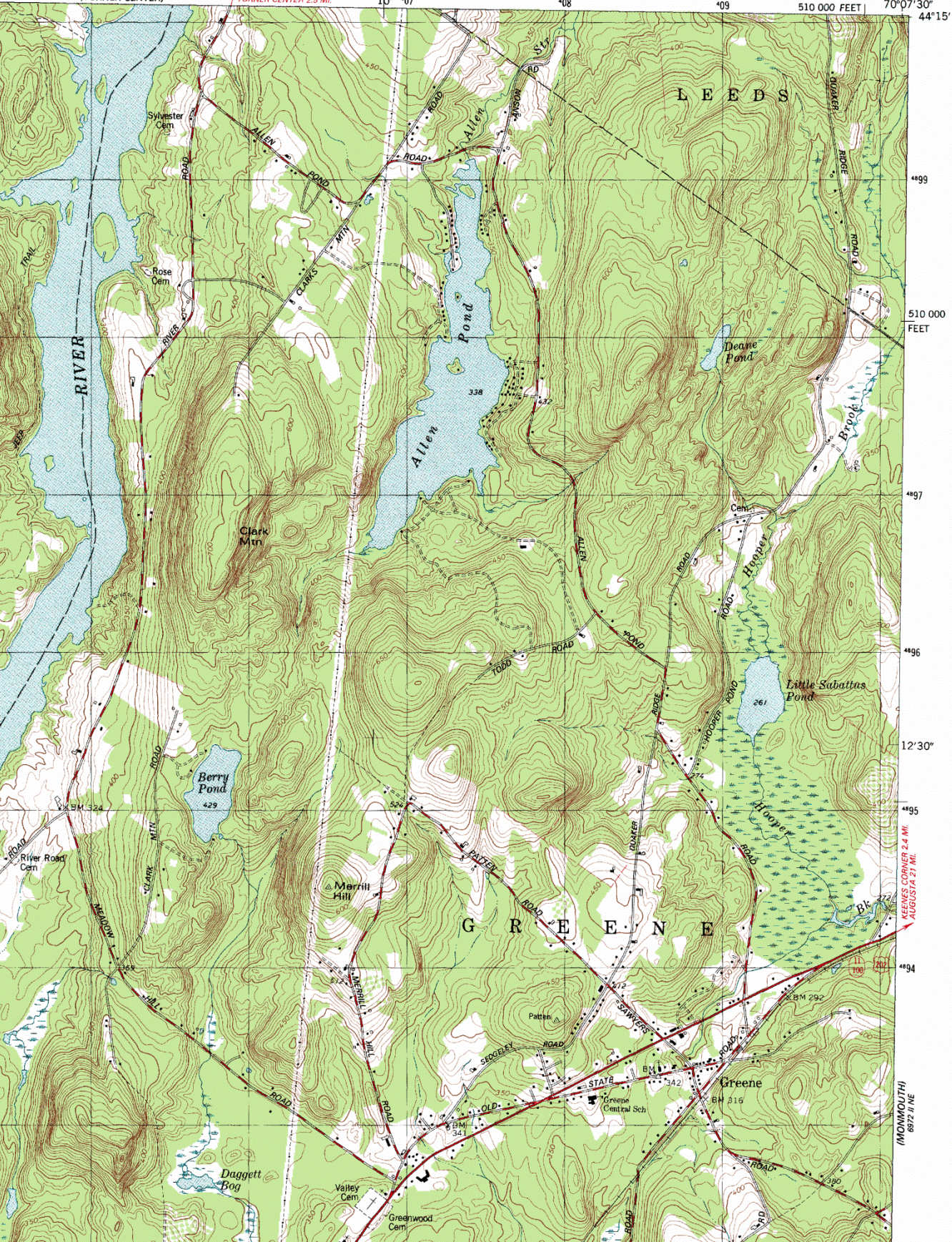
10° 07'

08

09

510 000 FEET

70° 07' 30"  
44° 15'

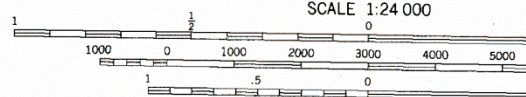
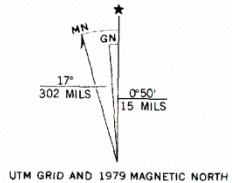






MINOT 8972 II SE

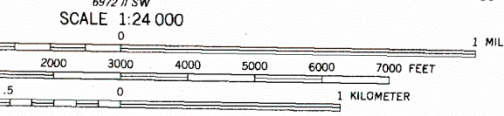
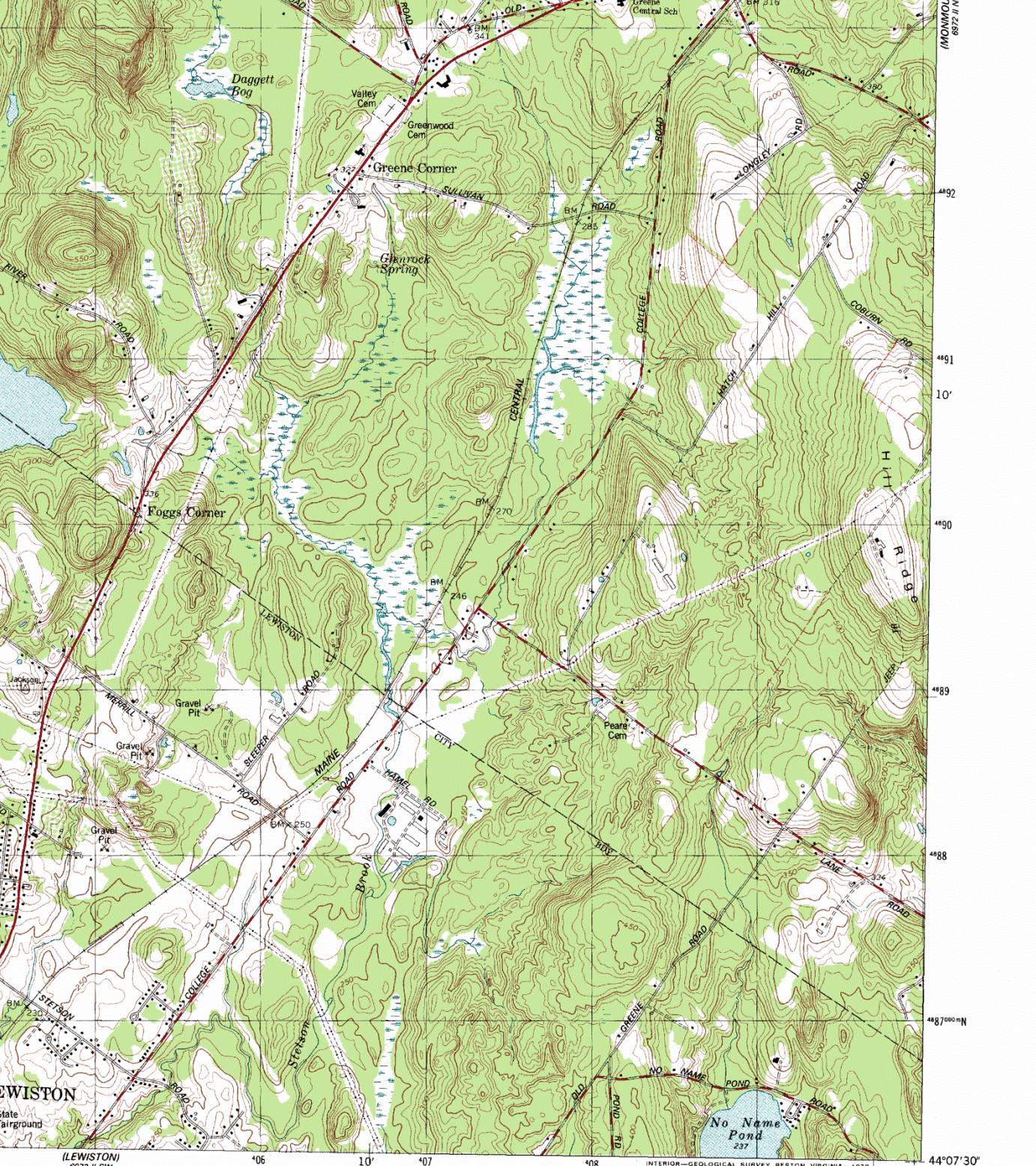
Mapped, edited, and published by the Geological Survey  
 Control by USGS, NOS/NOAA and Maine Geodetic Survey  
 Topography by photogrammetric methods from aerial photographs taken 1973. Field checked 1975. Map edited 1979  
 Projection and 10,000-foot grid ticks: Maine coordinate system, west zone (transverse Mercator)  
 1000-meter Universal Transverse Mercator grid, zone 19 1927 North American datum  
 To place on the predicted North American Datum 1983 move the projection lines 4 meters south and 41 meters west as shown by dashed corner ticks  
 Fine red dashed lines indicate selected fence and field lines where generally visible on aerial photographs. This information is unchecked



CONTOUR INTERVAL 10 FEET  
 NATIONAL GEODETIC VERTICAL DATUM OF 1929

THIS MAP COMPLIES WITH NATIONAL MAP ACCURACY STANDARDS FOR SALE BY U. S. GEOLOGICAL SURVEY, RESTON, VIRGINIA. A FOLDER DESCRIBING TOPOGRAPHIC MAPS AND SYMBOLS IS AVAILABLE





CONTOUR INTERVAL 10 FEET  
 MEAN SEA LEVEL GEODETIC VERTICAL DATUM OF 1929



ROAD CLASSIFICATION

Primary highway, hard surface	Light-duty road, hard or improved surface
Secondary highway, hard surface	Unimproved road
○ Interstate Route	○ U. S. Route
	○ State Route

CONFORMS WITH NATIONAL MAP ACCURACY STANDARDS  
 U. S. GEOLOGICAL SURVEY, RESTON, VIRGINIA 22092  
 TOPOGRAPHIC MAPS AND SYMBOLS IS AVAILABLE ON REQUEST

LAKE AUBURN EAST, MAINE  
 NW/4 LEWISTON 15' QUADRANGLE  
 N4407.5—W7007.5/7.5

Lake\_Auburn\_East\_Maine LR