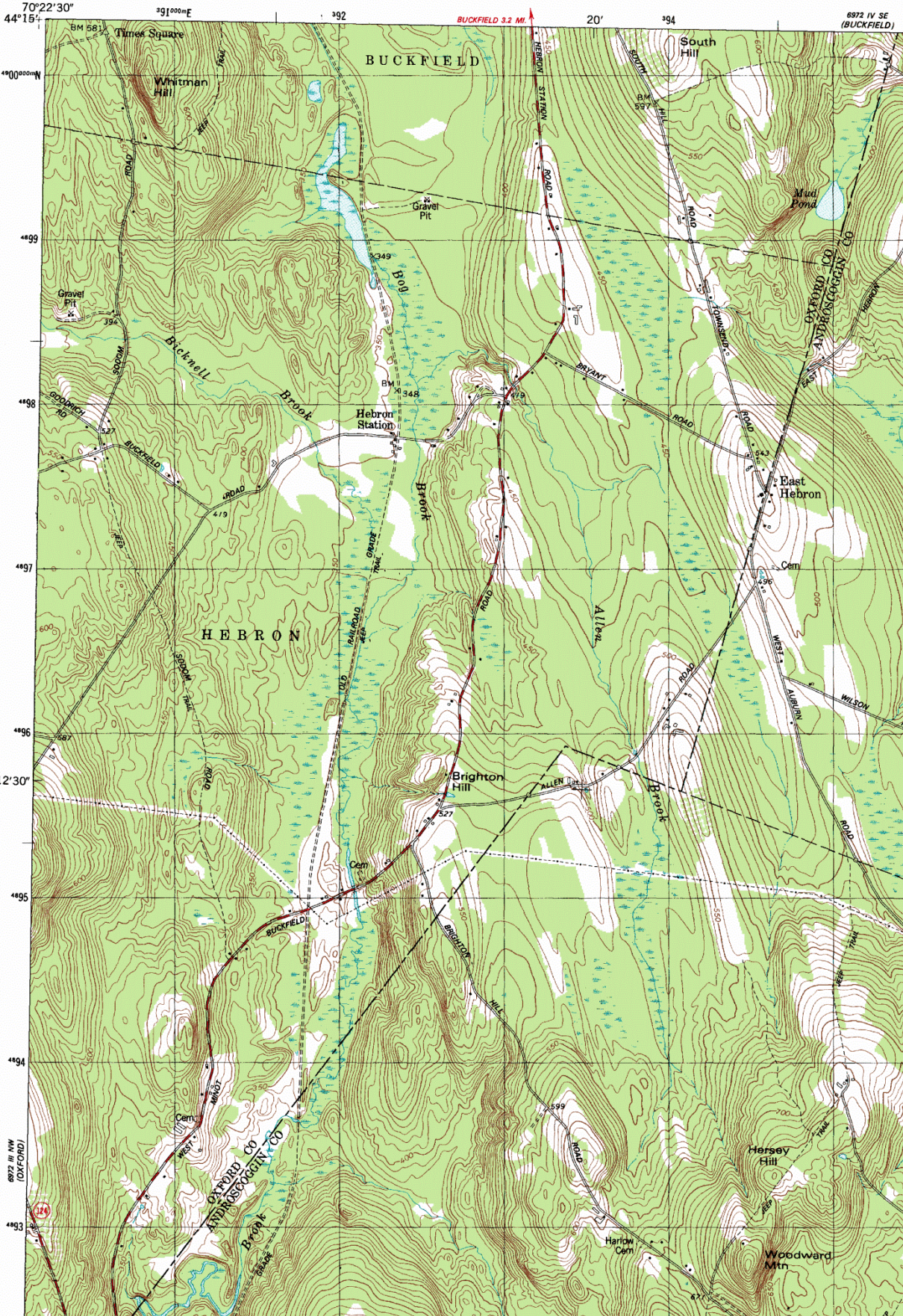


UNITED STATES
DEPARTMENT OF THE INTERIOR
GEOLOGICAL SURVEY



6972 IV NW
(WEST SUMMIT)

6972 IV SE
(BUCKFIELD)

70°22'30"
44°15'

12°30'

6972 III NW
(OXFORD)

6972 III NW
(OXFORD)

Lake_Auburn_West_Maine UR

LAKE AUBURN WEST QUADRANGLE

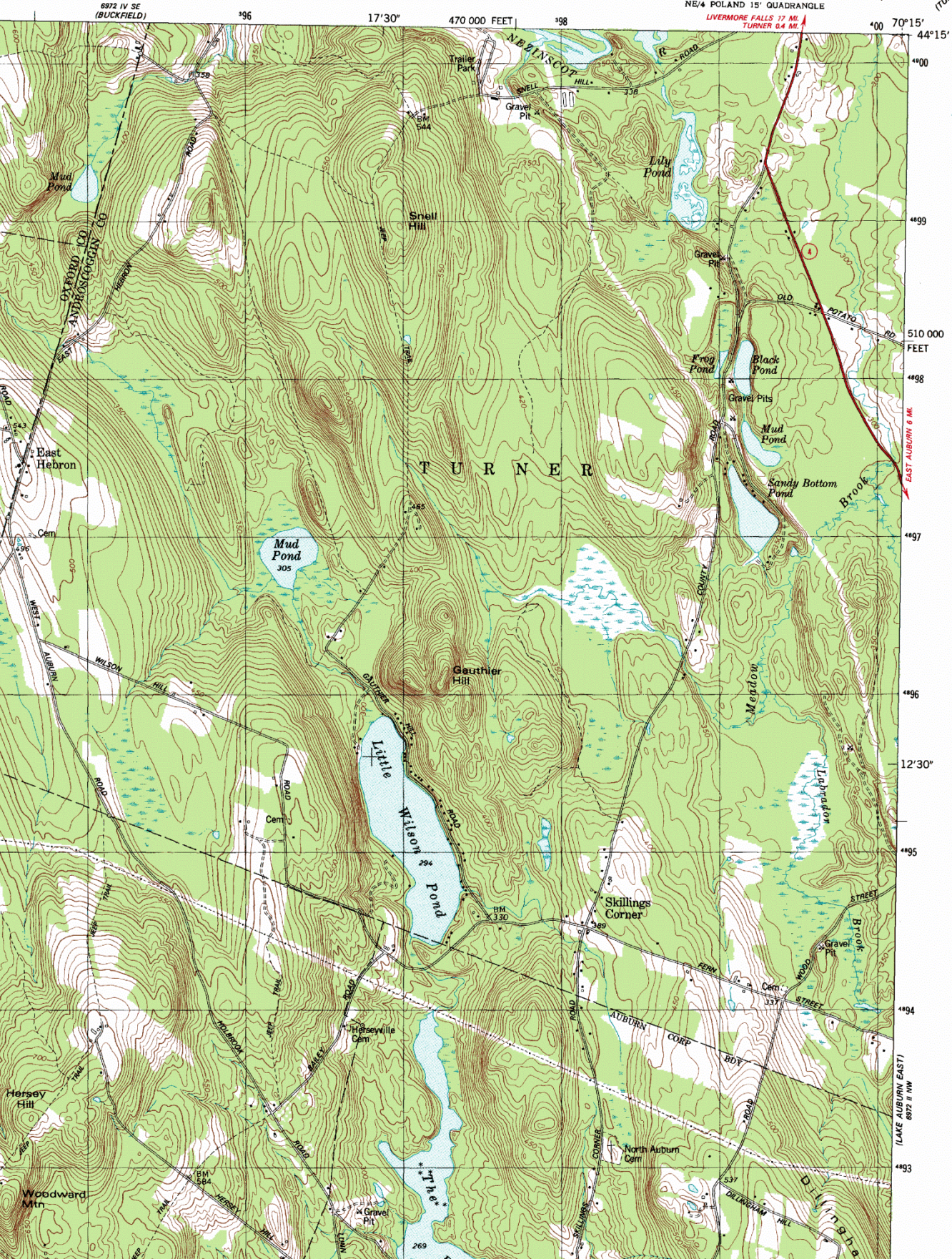
MAINE

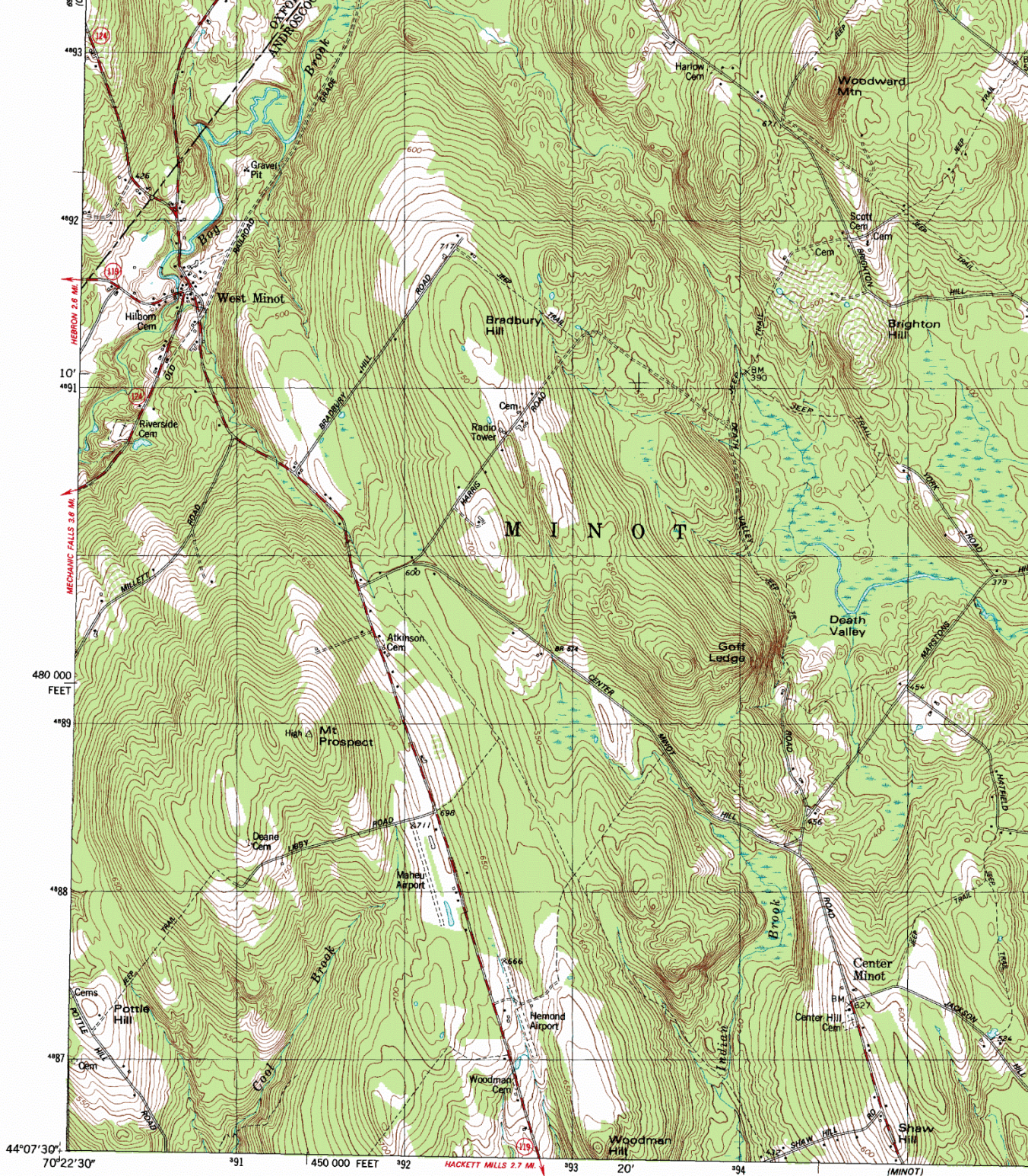
7.5 MINUTE SERIES (TOPOGRAPHIC)

NE/4 POLAND 15' QUADRANGLE

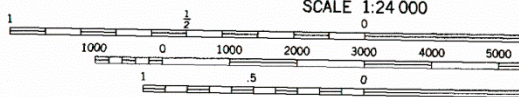
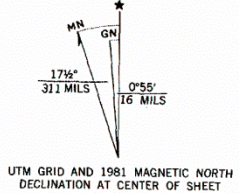
LIVERMORE FALLS 17 MI.
TURNER 0.4 MI.

892 I SW
(TURNER CENTER)

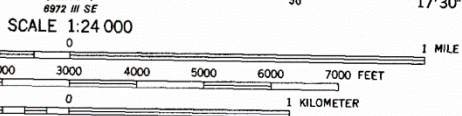




Mapped, edited, and published by the Geological Survey
 Control by USGS and NOS/NOAA
 Topography by photogrammetric methods from aerial photographs
 taken 1973. Field checked 1975. Map edited 1981
 Projection and 10,000-foot grid ticks: Maine coordinate
 system, west zone (transverse Mercator)
 1000-meter Universal Transverse Mercator grid, zone 19
 1927 North American Datum
 To place on the predicted North American Datum 1983
 move the projection lines 4 meters south and
 41 meters west as shown by dashed corner ticks



THIS MAP COMPLIES WITH NATIONAL MAP ACCURACY
 FOR SALE BY U. S. GEOLOGICAL SURVEY, RESTON, VIRG
 A FOLDER DESCRIBING TOPOGRAPHIC MAPS AND SYMBOLS IS AVAIL



CONTOUR INTERVAL 10 FEET
 MEAN SEA LEVEL GEODETIC VERTICAL DATUM OF 1929



ROAD CLASSIFICATION

Primary highway, hard surface	Light-duty road, hard or improved surface
Secondary highway, hard surface	Unimproved road
○ Interstate Route	○ U. S. Route
	○ State Route

LAKE AUBURN WEST, MAINE
 NE/4 POLAND 15' QUADRANGLE
 N4407.5 - W7015/7.5

CONFORMS WITH NATIONAL MAP ACCURACY STANDARDS
 NATIONAL GEODETIC SURVEY, RESTON, VIRGINIA 22092
 ADDITIONAL TOPOGRAPHIC MAPS AND SYMBOLS IS AVAILABLE ON REQUEST

1001

Lake_Auburn_West_Maine LR