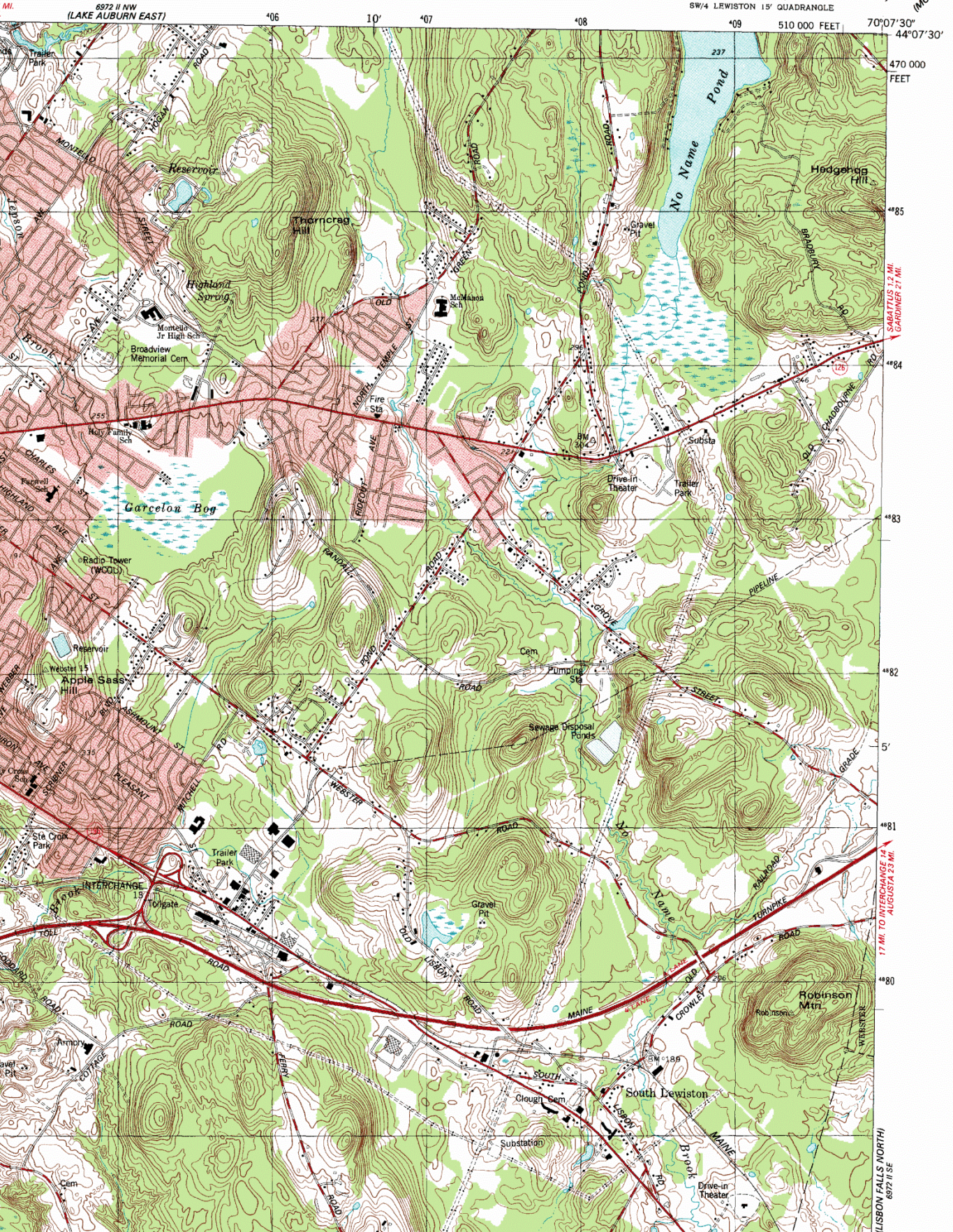
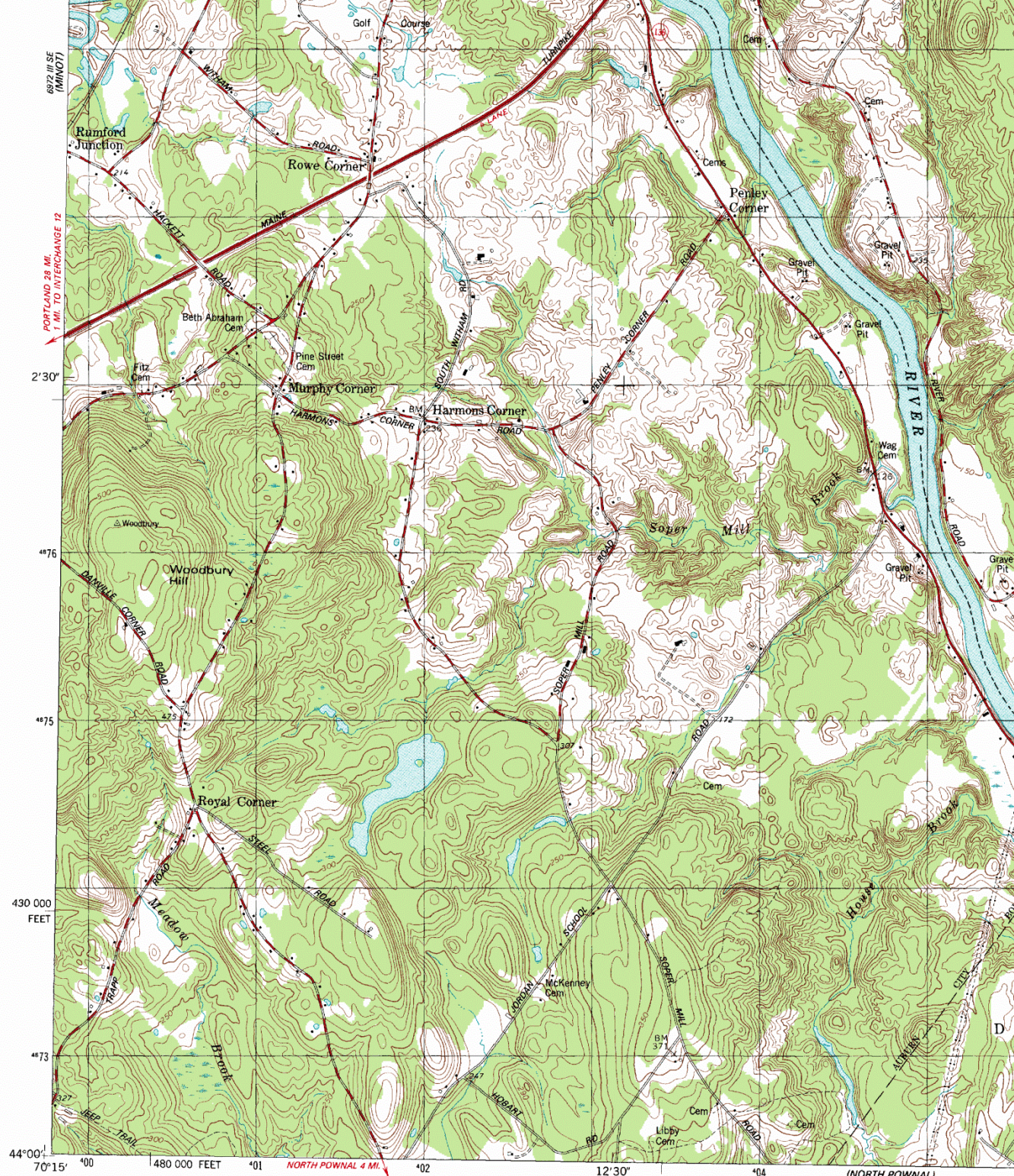


Lewistin_Maine UR

LEWISTON QUADRANGLE
MAINE—ANDROSCOGGIN CO
7.5 MINUTE SERIES (TOPOGRAPHIC)
SW/4 LEWISTON 15' QUADRANGLE

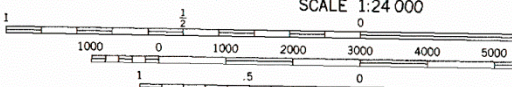
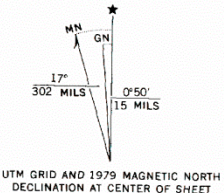
6972 II NE
(MONMOUTH)





(GRAY)
6971 N NE

Mapped, edited, and published by the Geological Survey
 Control by USGS, NOS/NOAA, and Maine Geodetic Survey
 Topography by photogrammetric methods from aerial photographs
 taken 1973. Field checked 1975. Map edited 1979
 Projection and 10,000-foot grid ticks: Maine coordinate
 system, west zone (transverse Mercator)
 1000-meter Universal Transverse Mercator grid, zone 19
 1927 North American Datum
 To place on the predicted North American Datum 1983
 move the projection lines 4 meters south and
 42 meters west as shown by dashed corner ticks
 Red tint indicates areas in which only landmark buildings are shown



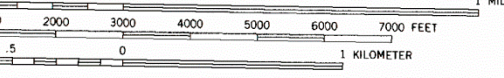
CONTOUR INTERVAL 10 FEET
 NATIONAL GEODETIC VERTICAL DATUM OF 1929

THIS MAP COMPLIES WITH NATIONAL MAP ACCURACY STANDARDS
 FOR SALE BY U. S. GEOLOGICAL SURVEY
 DENVER, COLORADO 80225, OR RESTON, VIRGINIA
 A FOLDER DESCRIBING TOPOGRAPHIC MAPS AND SYMBOLS IS AVAILABLE



(NORTH POWNAL)
6971 1 NW

SCALE 1:24 000



CONTOUR INTERVAL 10 FEET
AL GEODETIC VERTICAL DATUM OF 1929

PLIES WITH NATIONAL MAP ACCURACY STANDARDS
SALE BY U. S. GEOLOGICAL SURVEY
ORADO 80225, OR RESTON, VIRGINIA 22092
POGRAPHIC MAPS AND SYMBOLS IS AVAILABLE ON REQUEST



DURHAM 2 MI.
FREEPORT 9 MI.

ROAD CLASSIFICATION

- Primary highway, hard surface
- Secondary highway, hard surface
- Light-duty road, hard or improved surface
- Unimproved road
- Interstate Route
- U. S. Route
- State Route

LEWISTON, MAINE
SW/4 LEWISTON 15' QUADRANGLE
44070 A2-TF-024

Lewistin_Maine LR