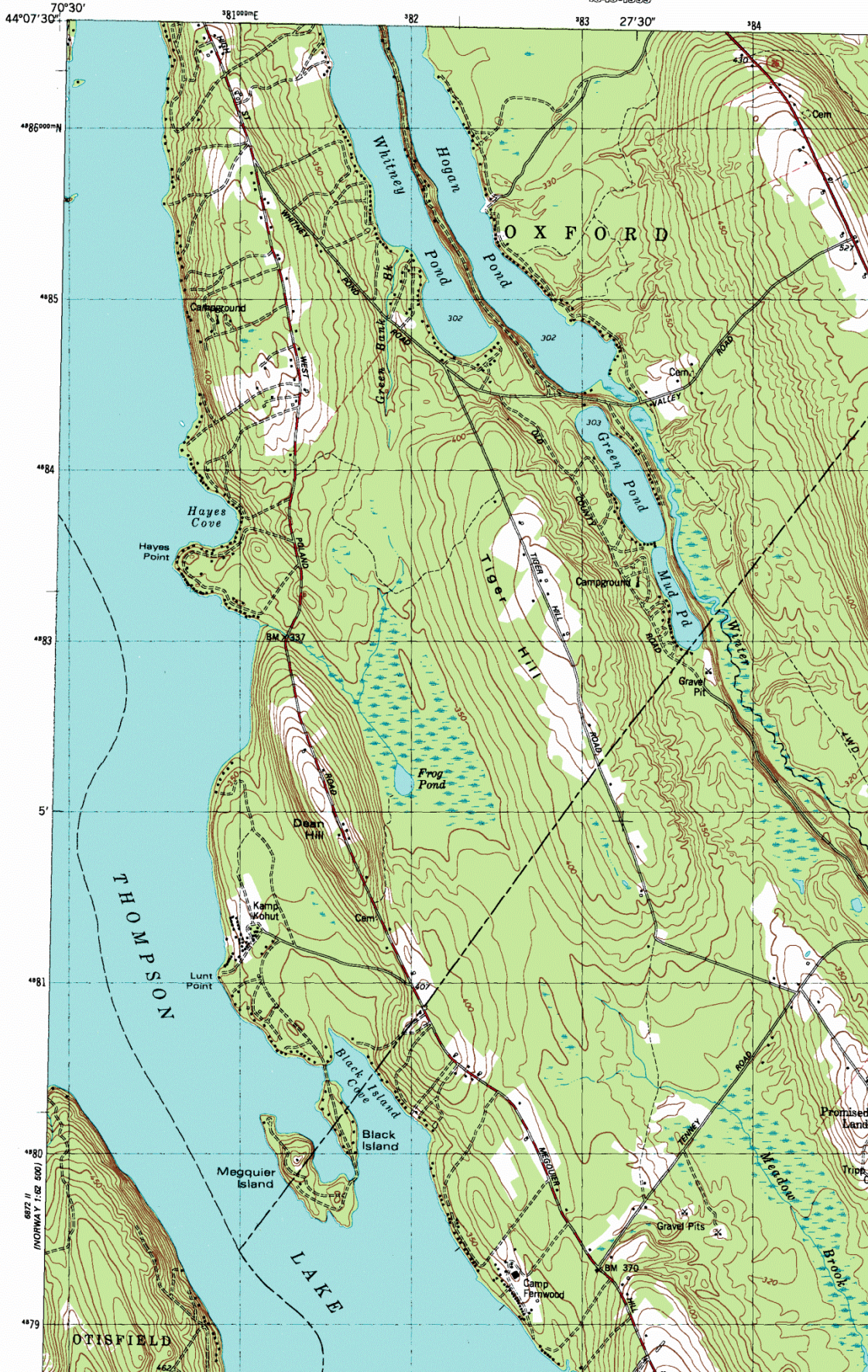


Mechanic_Falls_MaineUL

6872 II
(NORWAY 1:50,000)



U.S. DEPARTMENT OF THE INTERIOR
U.S. GEOLOGICAL SURVEY

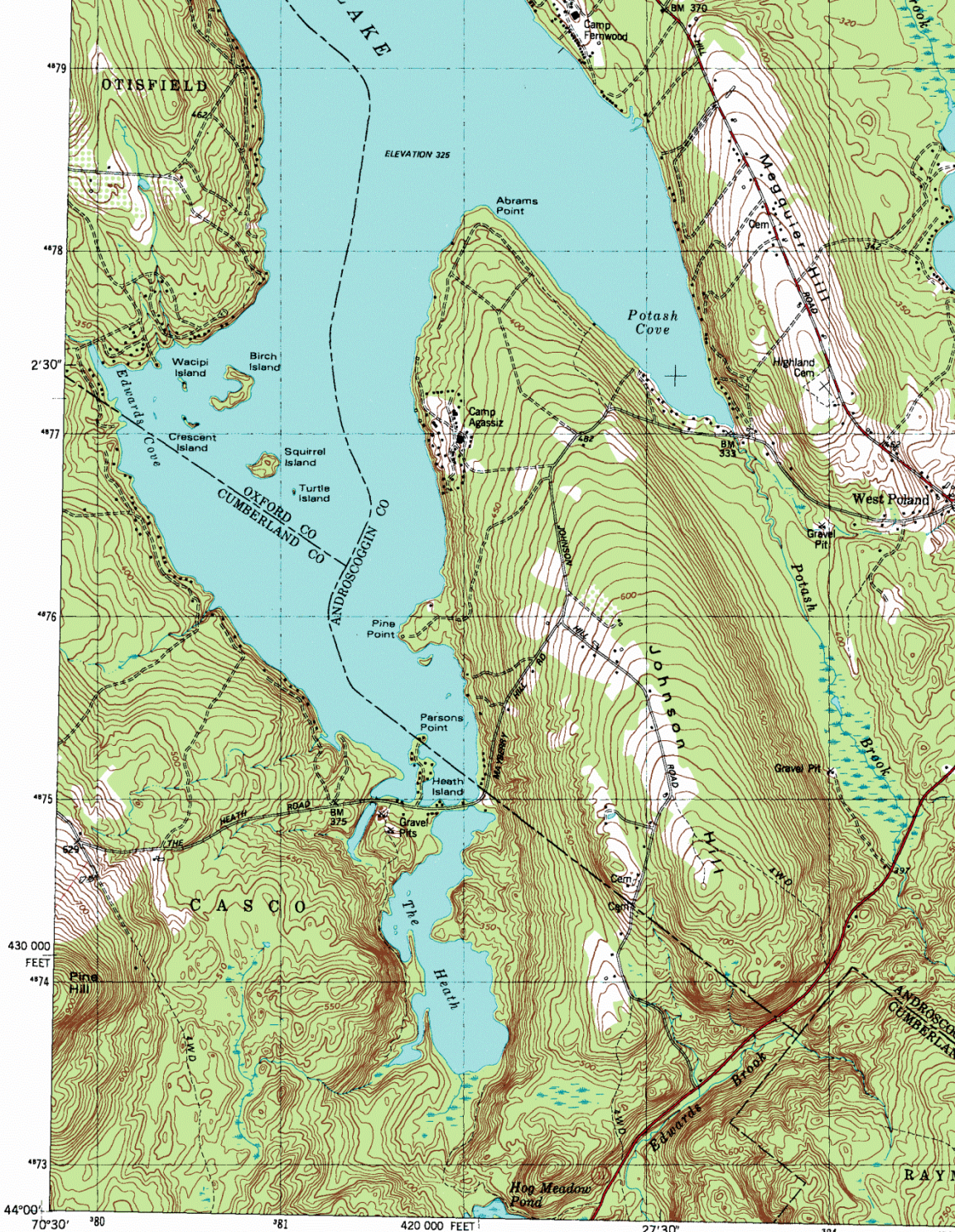


Mechanic_Falls_MaineUR

MECHANIC FALLS QUADRANGLE
MAINE
7.5 MINUTE SERIES (TOPOGRAPHIC)

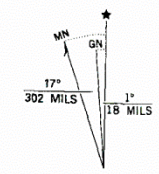
897 1/4 NE
(LAKE AUBURN WEST)



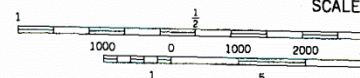


8871
SEBAGO LAKE
1:62,500

Produced by the United States Geological Survey
 Derived from imagery taken 1973 and other sources. Photoinspected using imagery taken 1995; no major culture or drainage changes observed. Survey control current as of 1975. Boundaries verified 1999.
 North American Datum of 1927 (NAD 27). Projection and 10 000-foot ticks: Maine coordinate system, west zone (transverse Mercator). 1000-meter Universal Transverse Mercator grid, zone 19.
 North American Datum of 1983 (NAD 83) is shown by dashed corner ticks. The values of the shift between NAD 27 and NAD 83 for 7.5-minute intersections are obtainable from National Geodetic Survey NADCON software.

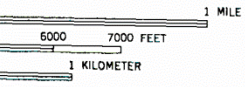
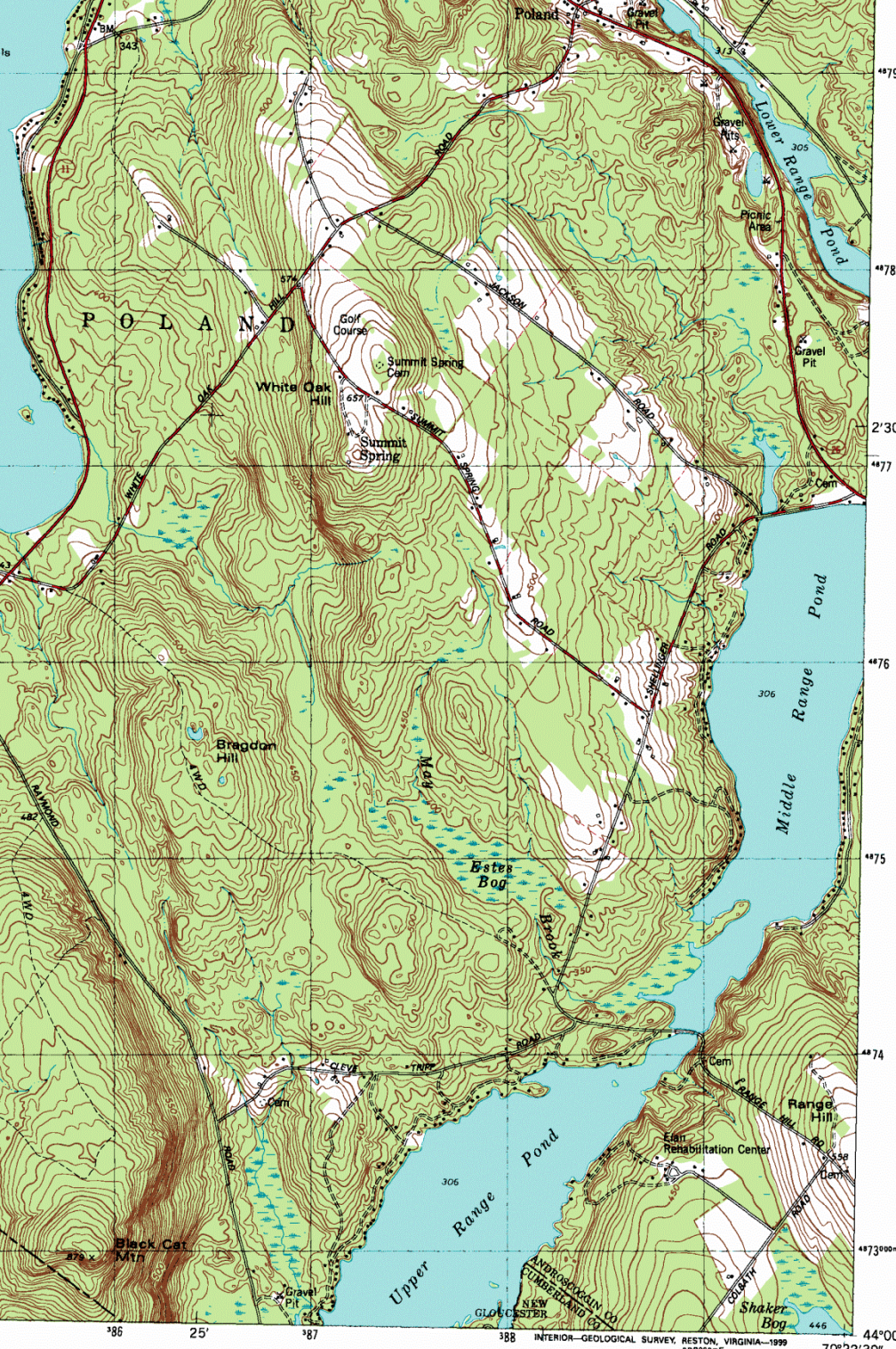


UTM GRID AND 1999 MAGNETIC NORTH DECLINATION AT CENTER OF SHEET



CONTOUR INTERVAL
 NATIONAL GEODETIC SYSTEM
 TO CONVERT FROM FEET TO METERS

THIS MAP COMPLIES WITH NATIONAL MAP ACT
 FOR SALE BY U.S. GEOLOGICAL SURVEY,
 A FOLDER DESCRIBING TOPOGRAPHIC MAPS



ROAD CLASSIFICATION

Primary highway, hard surface	Light-duty road, hard or improved surface
Secondary highway, hard surface	Unimproved road
Interstate Route	U. S. Route
	State Route

MECHANIC FALLS, MAINE

1995

NIMA 6972 III SW-SERIES V811



STANDARDS
 COLORADO 80225
 TABLE ON REQUEST