

# Minot\_Maine UL

UNITED STATES  
DEPARTMENT OF THE INTERIOR  
GEOLOGICAL SURVEY

6972 III SW  
(OF-ROAD)

70°22'30"  
44°07'30"

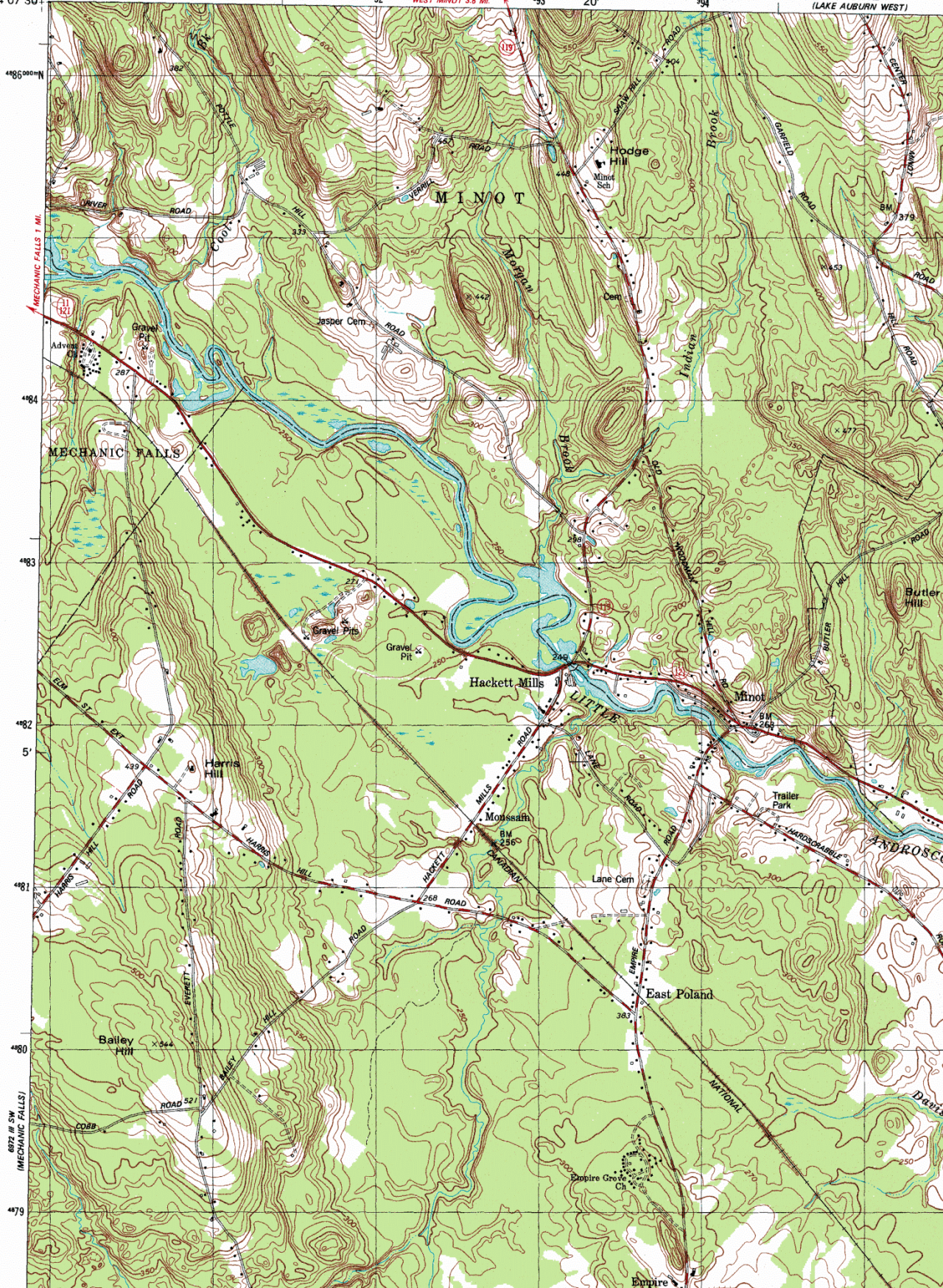
91 900ME

SOUTH PARIS 12 MI.  
WEST MINOT 3.6 MI.

92 20' 93

94

6972 III NE  
(LAKE AUBURN WEST)



# Minot\_Maine UR

MINOT QUADRANGLE  
MAINE  
7.5 MINUTE SERIES (TOPOGRAPHIC)  
SE/4 POLAND 15' QUADRANGLE

8972 1/4 NW  
(LAKE AUBURN EAST)

6972 III NE  
(LAKE AUBURN WEST)

996

17°30'

997

470 000 FEET

999

70°15'  
44°07'30"

470 000  
FEET



485

484

483

482

5'

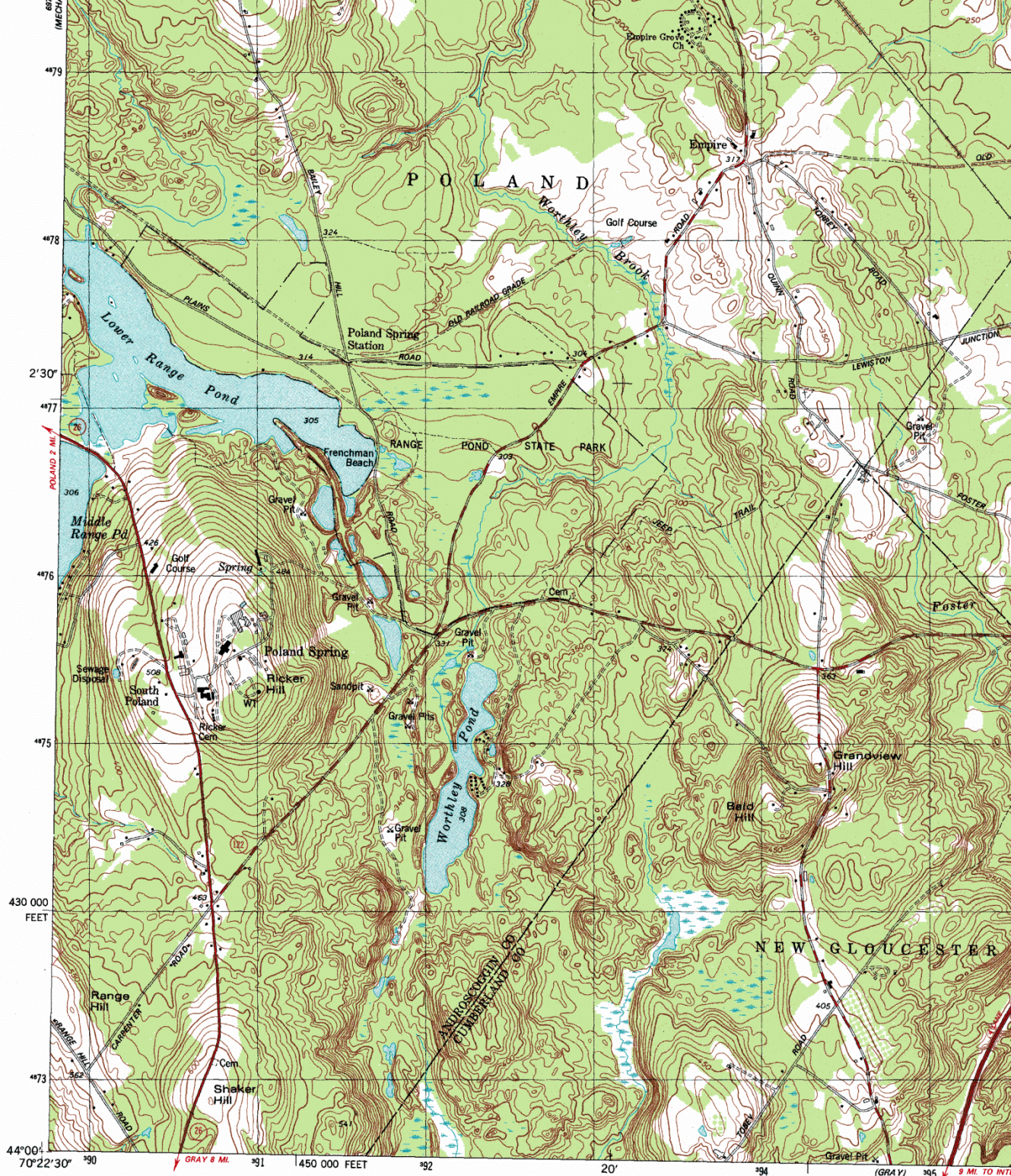
481

LEWISTON 1/6 NE

Radio Tower  
(WLAN)

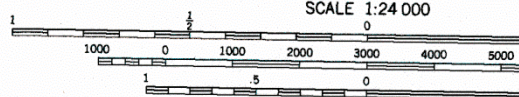
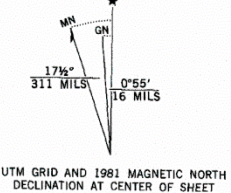
479

8972 1/4 SW  
(LAKE AUBURN WEST)



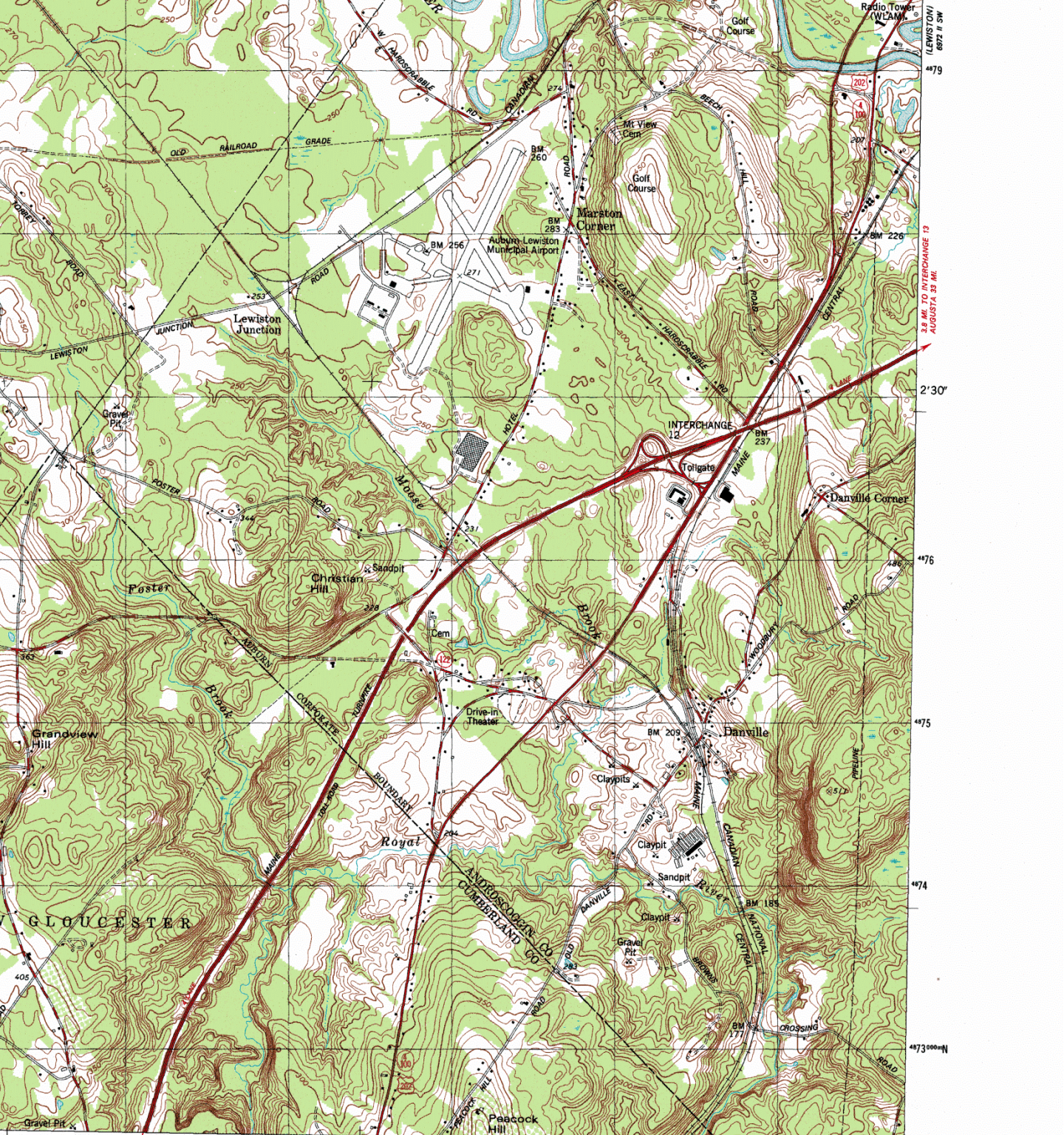
(RAYMOND)  
6971 IV NE

Mapped, edited, and published by the Geological Survey  
 Control by USGS and NOS/NOAA  
 Topography by photogrammetric methods from aerial photographs  
 taken 1973. Field checked 1975. Map edited 1981  
 Projection and 10,000-foot grid ticks: Maine coordinate  
 system, west zone (transverse Mercator)  
 1000-meter Universal Transverse Mercator grid, zone 19  
 1927 North American Datum  
 To place on the predicted North American Datum 1983  
 move the projection lines 4 meters south and  
 41 meters west as shown by dashed corner ticks  
 Fine red dashed lines indicate selected fence and field lines where  
 generally visible on aerial photographs. This information is unchecked  
 Red tint indicates areas in which only landmark buildings are shown  
 There may be private inholdings within the boundaries of  
 the National or State reservations shown on this map



CONTOUR INTERVAL 10 FEET  
 NATIONAL GEODETIC VERTICAL DATUM OF 1929

THIS MAP COMPLIES WITH NATIONAL MAP ACCURACY STANDARDS  
 FOR SALE BY U.S. GEOLOGICAL SURVEY  
 DENVER, COLORADO 80225, OR RESTON, VIRGINIA  
 A FOLDER DESCRIBING TOPOGRAPHIC MAPS AND SYMBOLS IS AVAILABLE



SCALE 1:24 000

0 2000 3000 4000 5000 6000 7000 FEET

0 1 KILOMETER

CONTOUR INTERVAL 10 FEET  
 MEAN SEA LEVEL GEODETIC VERTICAL DATUM OF 1929

THIS MAP COMPLIES WITH NATIONAL MAP ACCURACY STANDARDS  
 AUTHORIZED BY U.S. GEOLOGICAL SURVEY  
 WASHINGTON, D.C. 20508  
 ORIGINAL MAP NO. 80225, OR RESTON, VIRGINIA 22092  
 ADDITIONAL INFORMATION AND SYMBOLS IS AVAILABLE ON REQUEST



QUADRANGLE LOCATION

ROAD CLASSIFICATION

Primary highway, hard surface ———— Light-duty road, hard or improved surface ————

Secondary highway, hard surface ———— Unimproved road - - - - -

○ Interstate Route    ○ U.S. Route    ○ State Route

**MINOT, MAINE**  
 SE/4 POLAND 15' QUADRANGLE  
 N4400-W7015/7.5