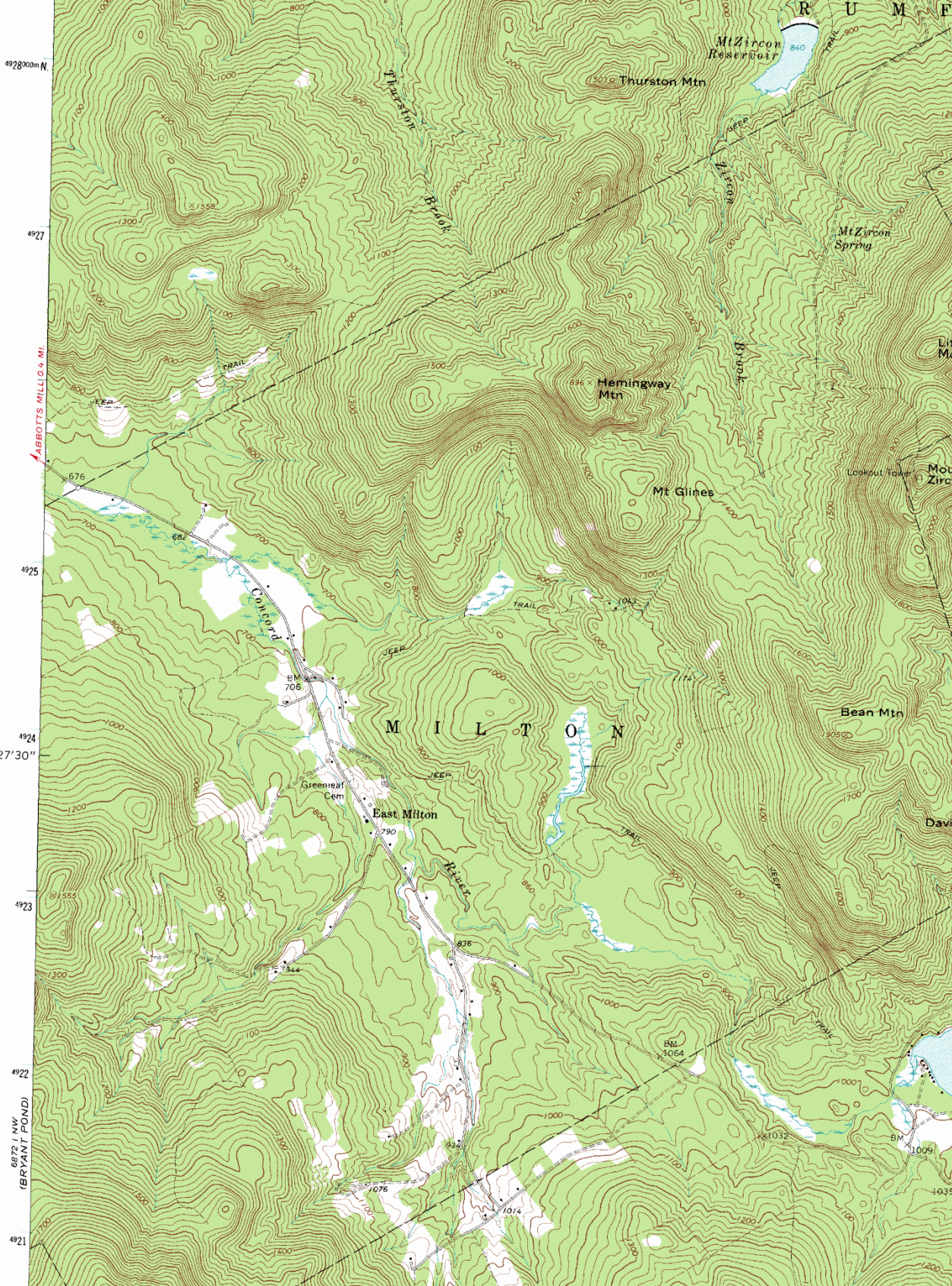


Mt_Zircon_Maine UL

UNITED STATES
DEPARTMENT OF THE INTERIOR
GEOLOGICAL SURVEY

70° 37' 30" 371000m E. 372 373 374 35' 375 6873 II (RUMFORD 1:62 500)



Mt_Zircon_Maine UR

MOUNT ZIRCON QUADRANGLE
MAINE—OXFORD CO.
7.5 MINUTE SERIES (TOPOGRAPHIC)
NE/4 BRYANT POND 15' QUADRANGLE

6873 III SW
(DIXFIELD)

375 6873 II (RUMFORD 1:62 500) 377 32'30" 378 2.1 MI. TO MAINE 108 410 000 FEET 70° 30' 44° 30'



600 000 FEET

DIXFIELD 9 MI.

4928

4927

4925

4924

27'30"

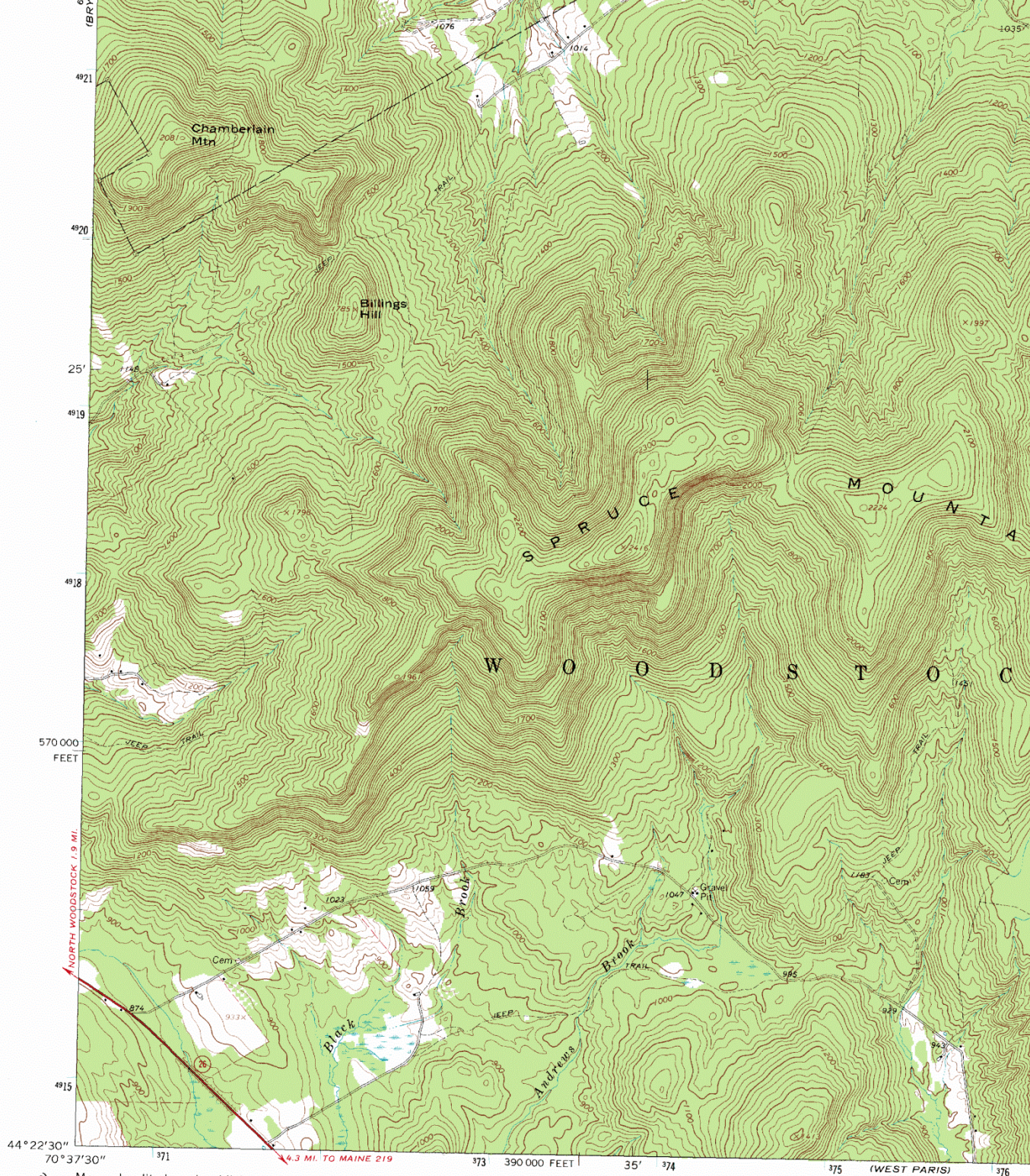
4923

4922

4921

(WORTHLEY POND)
6872 IV NW

4921



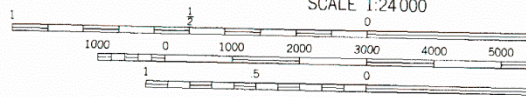
Mapped, edited, and published by the Geological Survey
 Control by USGS and USC&GS

Topography by photogrammetric methods from aerial
 photographs taken 1963. Field checked 1967

Polyconic projection. 1927 North American datum
 10,000-foot grid based on Maine coordinate system, west zone
 1000-meter Universal Transverse Mercator grid ticks,
 zone 19, shown in blue

Fine red dashed lines indicate selected fence and field lines where
 generally visible on aerial photographs. This information is unchecked

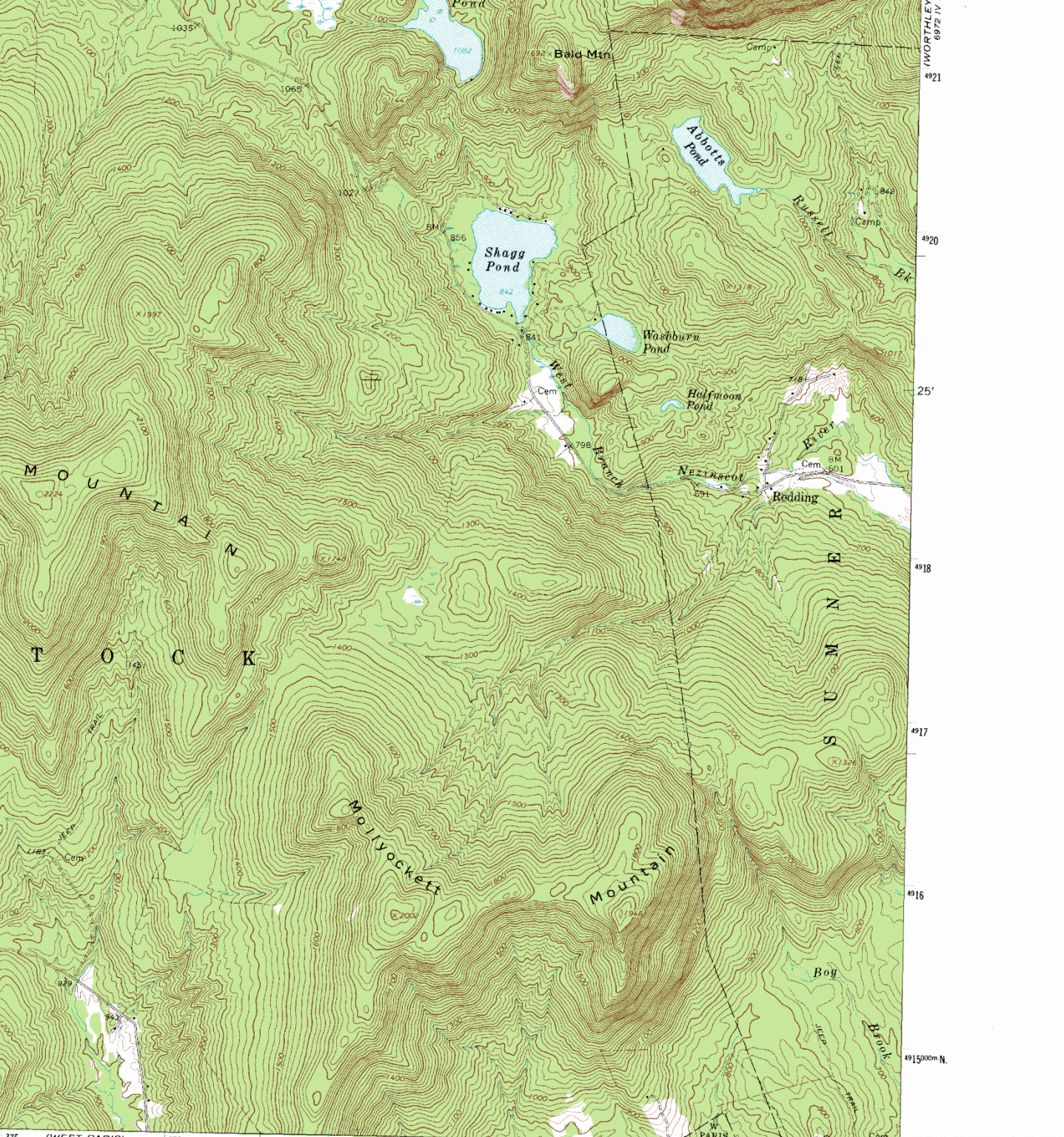
UTM GRID AND 1967 MAGNETIC NORTH
 DECLINATION AT CENTER OF SHEET



CONTOUR INTERVAL 20 FEET
 DATUM IS MEAN SEA LEVEL

THIS MAP COMPLIES WITH NATIONAL MAP ACCURACY STANDARDS
 FOR SALE BY U. S. GEOLOGICAL SURVEY, WASHINGTON
 A FOLDER DESCRIBING TOPOGRAPHIC MAPS AND SYMBOLS IS AVAILABLE

Mt_Zircon_Maine LL



375 (WEST PARIS) 376 377 32'30" 378
 6872 1 SE
 SCALE 1:24 000
 0 2000 3000 4000 5000 6000 7000 FEET
 0 1 KILOMETER
 1 MILE

CONTOUR INTERVAL 20 FEET
 DATUM IS MEAN SEA LEVEL



QUADRANGLE LOCATION

ROAD CLASSIFICATION
 Primary highway, all weather, hard surface
 Light-duty road, all weather, improved surface
 Unimproved road, fair or dry weather
 State Route

MOUNT ZIRCON, MAINE
 NE/4 BRYANT POND 15' QUADRANGLE
 N4422.5—W7030/7.5

CONFORMS WITH NATIONAL MAP ACCURACY STANDARDS
 GEOLOGICAL SURVEY, WASHINGTON, D. C. 20242
 GEOGRAPHIC MAPS AND SYMBOLS IS AVAILABLE ON REQUEST