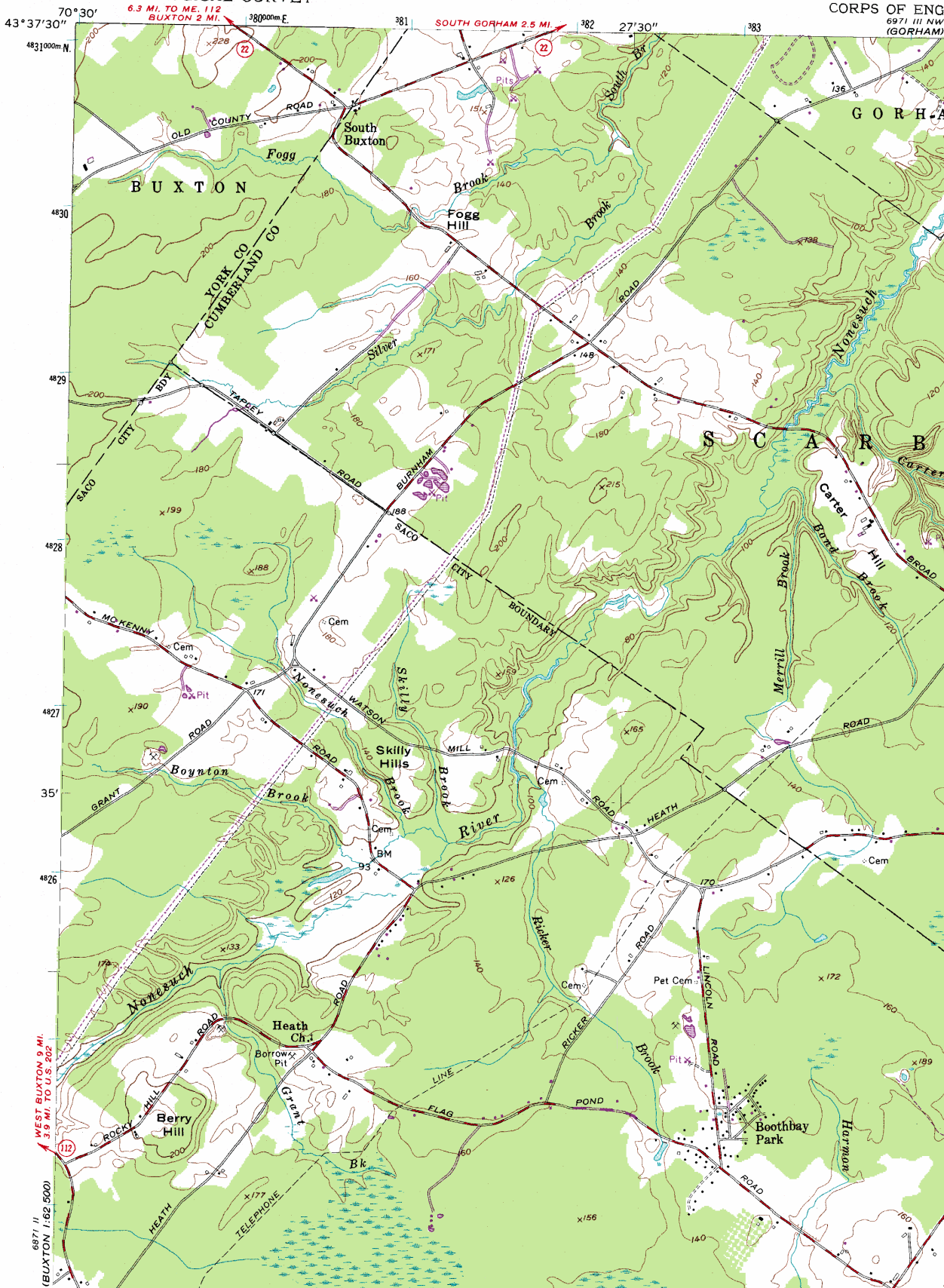


Old_Orchard_Beach_Maine UL

UNITED STATES
DEPARTMENT OF THE INTERIOR
GEOLOGICAL SURVEY

UNITED STATES
DEPARTMENT OF
CORPS OF ENGINEERS



6871 11 62 5000
(BUXTON 1:62 5000)

70° 30'
43° 37' 30"
4831000m N
4830
4829
4828
4827
35'
4826
6871 11
(BUXTON 1:62 5000)

WEST BUXTON 0.6 MI.
3.9 MI. TO U.S. 202

6.3 MI. TO ME. 112
BUXTON 2 MI.

SOUTH GORHAM 2.5 MI.

6971 III NW
(GORHAM)

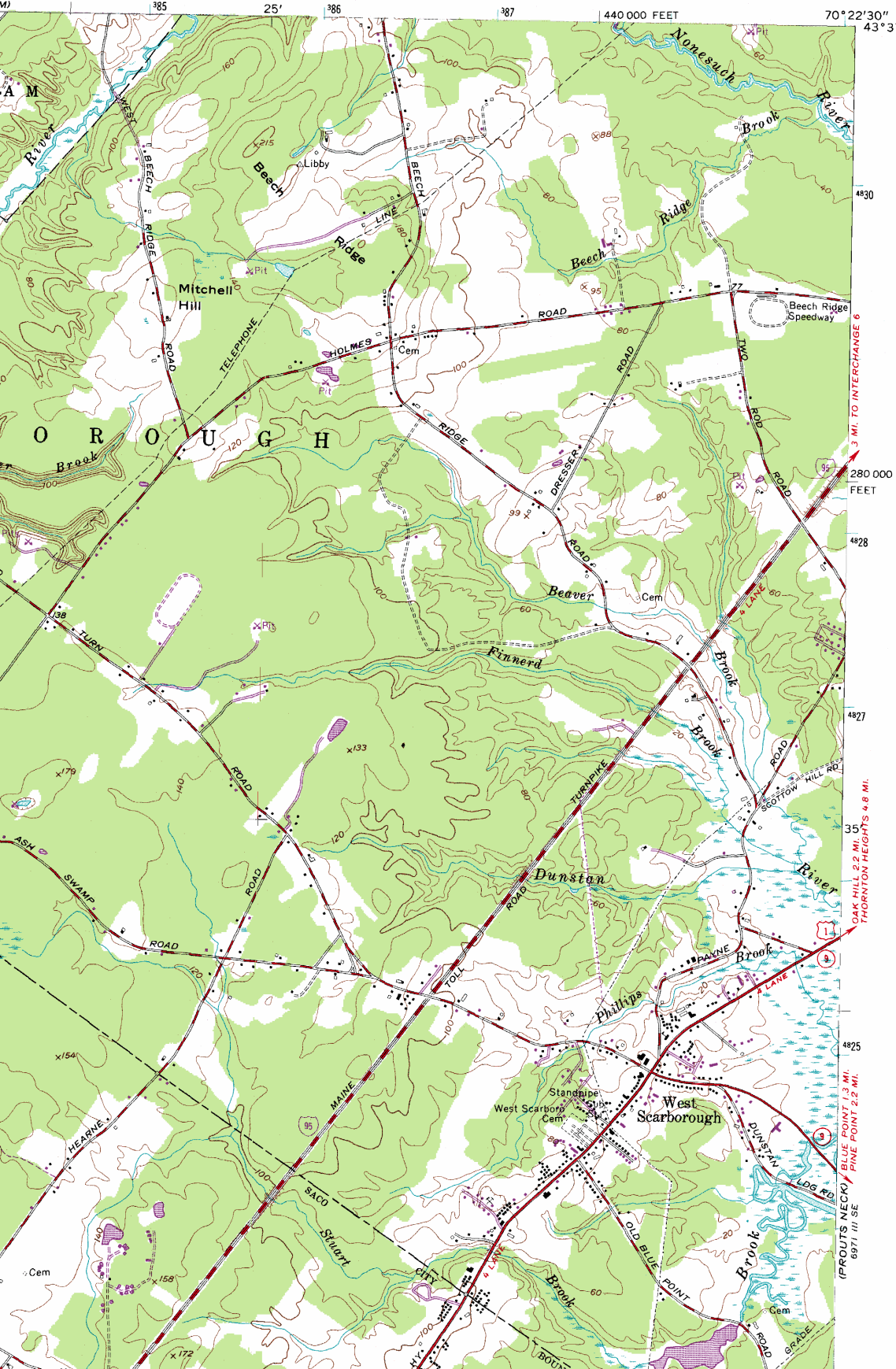
Old_Orchard_Beach_Maine UR

OLD ORCHARD BEACH QUADRANGLE
MAINE
7.5 MINUTE SERIES (TOPOGRAPHIC)

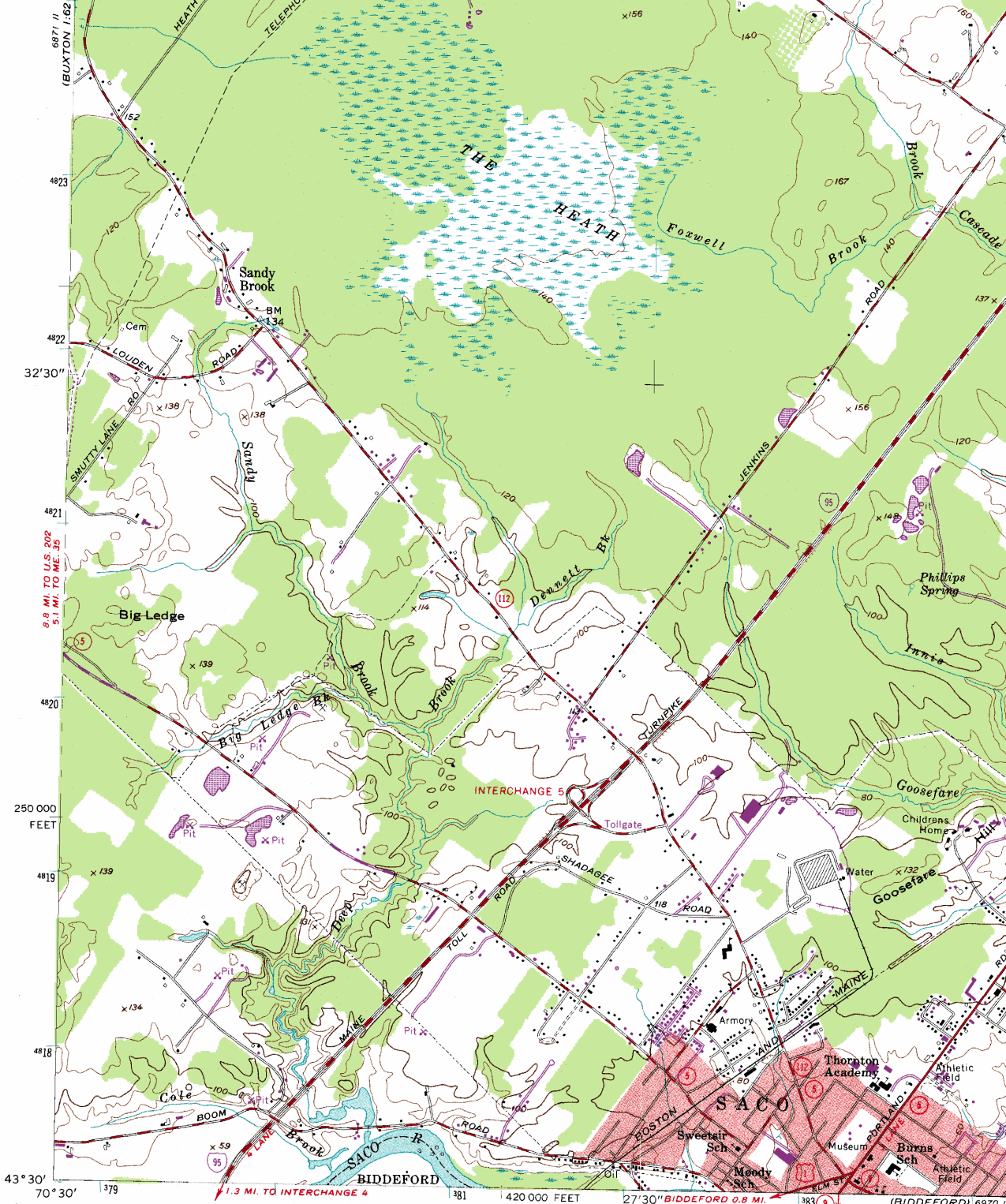
SW/4 PORTLAND 15' QUADRANGLE

69° 11' NE
(PORTLAND WEST)

UNITED STATES
DEPARTMENT OF THE ARMY
ENGINEERS
WASHINGTON, D.C.

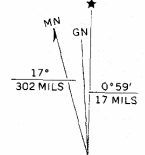


3.3 MI. TO INTERCHANGE 6
280 000 FEET
4.8 MI. THORNTON HEIGHTS
1.3 MI. BLUE POINT
2.2 MI. FINE POINT
69° 11' SE



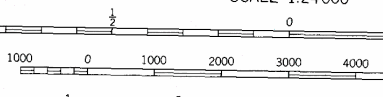
Mapped by the Army Map Service
 Edited and published by the Geological Survey
 Control by USGS and USC&GS
 Culture and drainage in part compiled from aerial photographs taken 1943. Topography by planetable surveys 1944
 Culture revised by the Geological Survey 1956
 Hydrography compiled from USC&GS chart 231 (1954)
 Polyconic projection. 1927 North American datum
 10,000-foot grid based on Maine coordinate system, west zone
 1000-meter Universal Transverse Mercator grid ticks, zone 19, shown in blue
 Red tint indicates areas in which only landmark buildings are shown

6870 1
 KENNEBUNK
 1:62 5000



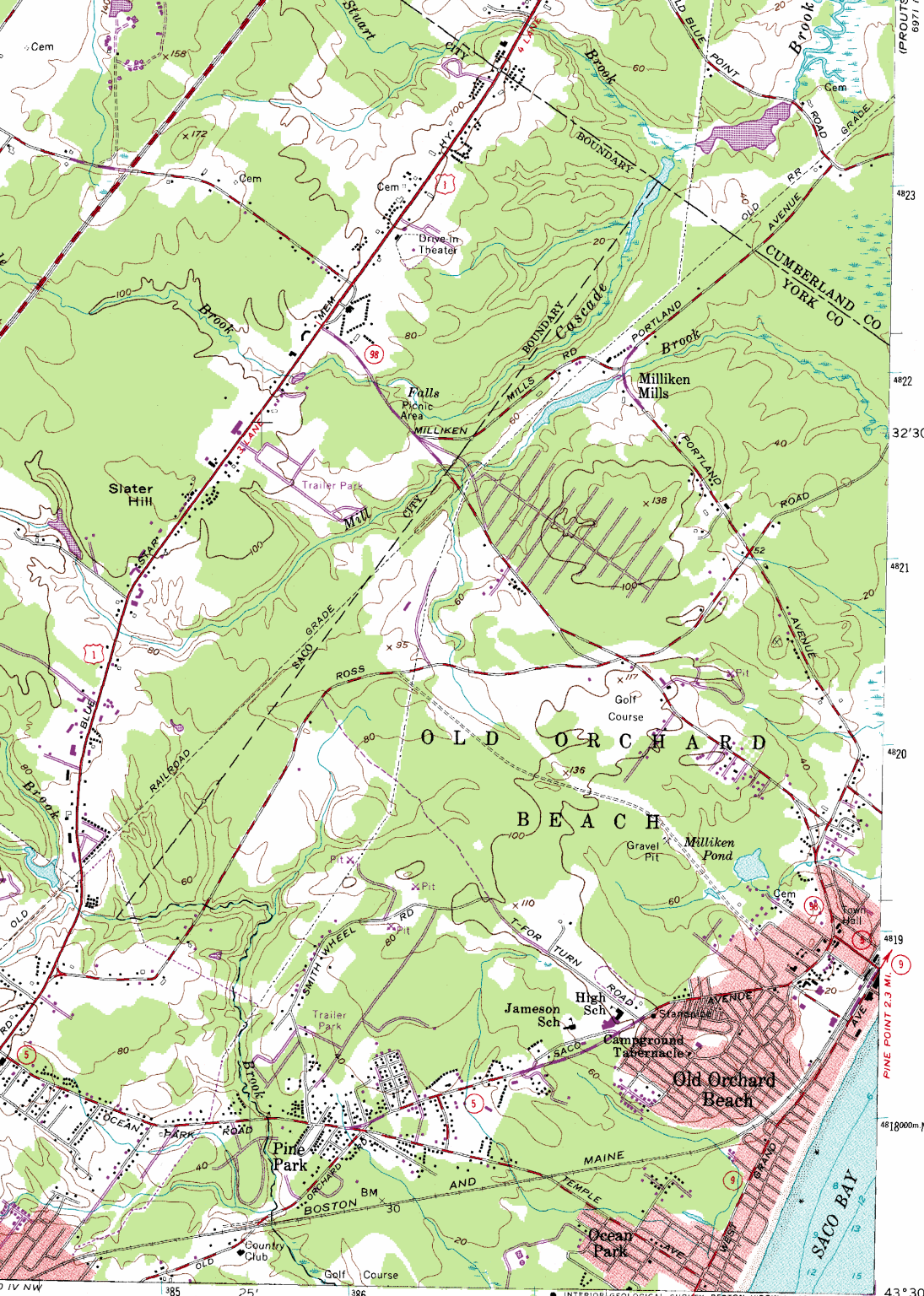
UTM GRID AND 1970 MAGNETIC NORTH DECLINATION AT CENTER OF SHEET

Map photoinspected 1975
 No major culture or drainage changes observed



CONTOUR INTERVAL 20 FEET
 DATUM IS MEAN SEA LEVEL
 DEPTH CURVES AND SOUNDINGS IN FEET—DATUM
 SHORELINE SHOWN REPRESENTS THE APPROXIMATE LINE
 THE MEAN RANGE OF TIDE IS APPROXIMATE

THIS MAP COMPLIES WITH NATIONAL MAP ACCORDANCE ACT
 FOR SALE BY U.S. GEOLOGICAL SURVEY
 DENVER, COLORADO 80225, OR RESTON, VIRGINIA
 A FOLDER DESCRIBING TOPOGRAPHIC MAPS AND SYMBOLS



4823
4822
32'30"
4821
4820
4819
4818000m N
43°30'
70°22'30"

1 MILE
5000 6000 7000 FEET
1 KILOMETER
MEAN LOW WATER
MEAN HIGH WATER
8.8 FEET
ACCURACY STANDARDS
SURVEY
VIRGINIA 22092
IS AVAILABLE ON REQUEST



Revisions shown in purple compiled by the Geological Survey from aerial photographs taken 1970. This information not field checked

ROAD CLASSIFICATION
 Heavy-duty ————
 Medium-duty ————
 Light-duty ————
 Unimproved dirt ————
 U.S. Route (red shield)
 State Route (red circle)
 Interstate Route (purple shield)

OLD ORCHARD BEACH, ME.
 SW/4 PORTLAND 15' QUADRANGLE
 N4330—W7022.5/7.5
 PHOTOINSPECTED 1975
 1956
 PHOTOREVISED 1970

Old_Orchard_Beach_Maine LR