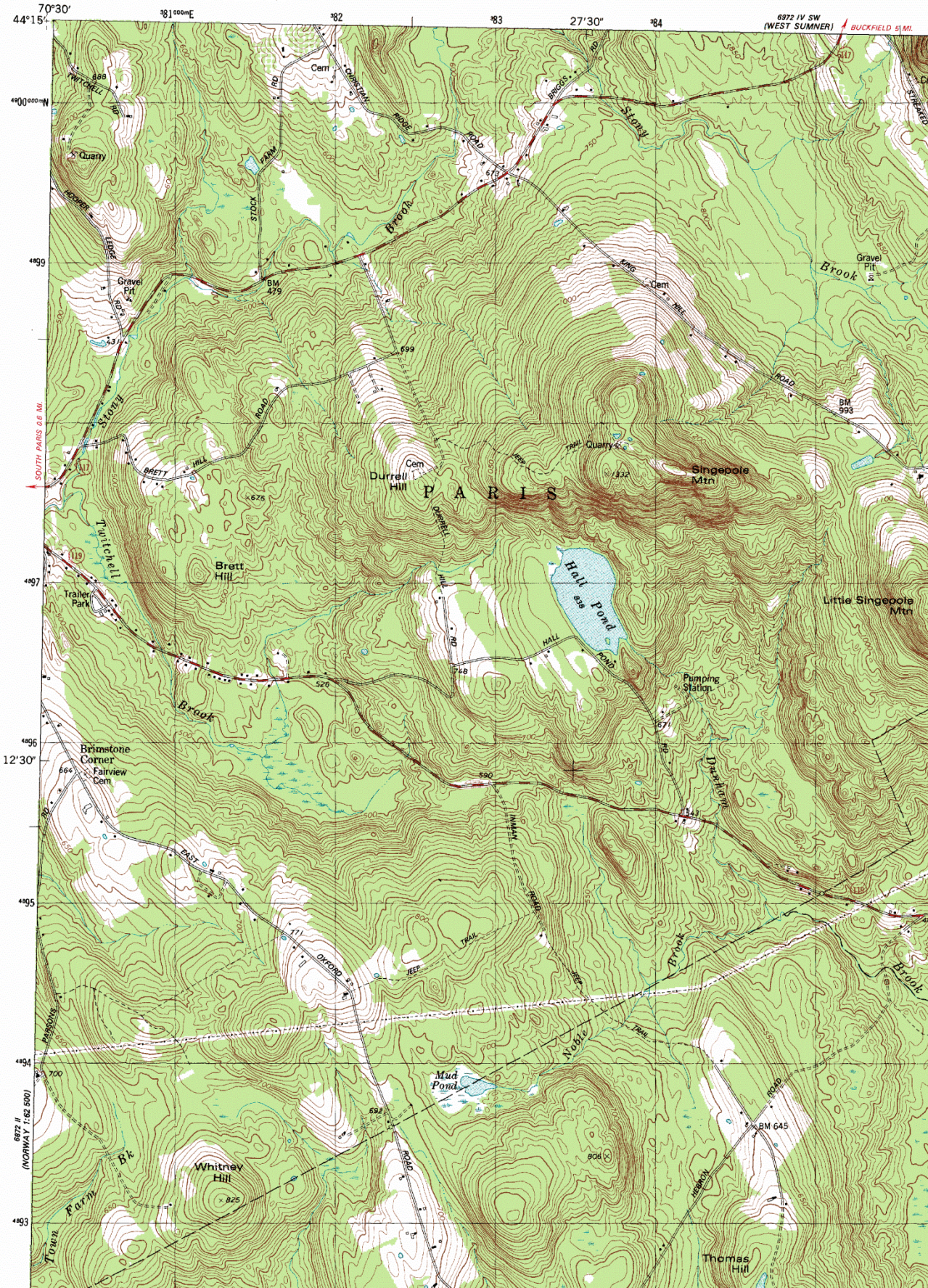


UNITED STATES
DEPARTMENT OF THE INTERIOR
GEOLOGICAL SURVEY

6971 SE
(WEST PARIS)



6972 II
(NORWAY 1:62,500)

6972 IV SW
(WEST SUMMER) BUCKFIELD 5 MI.

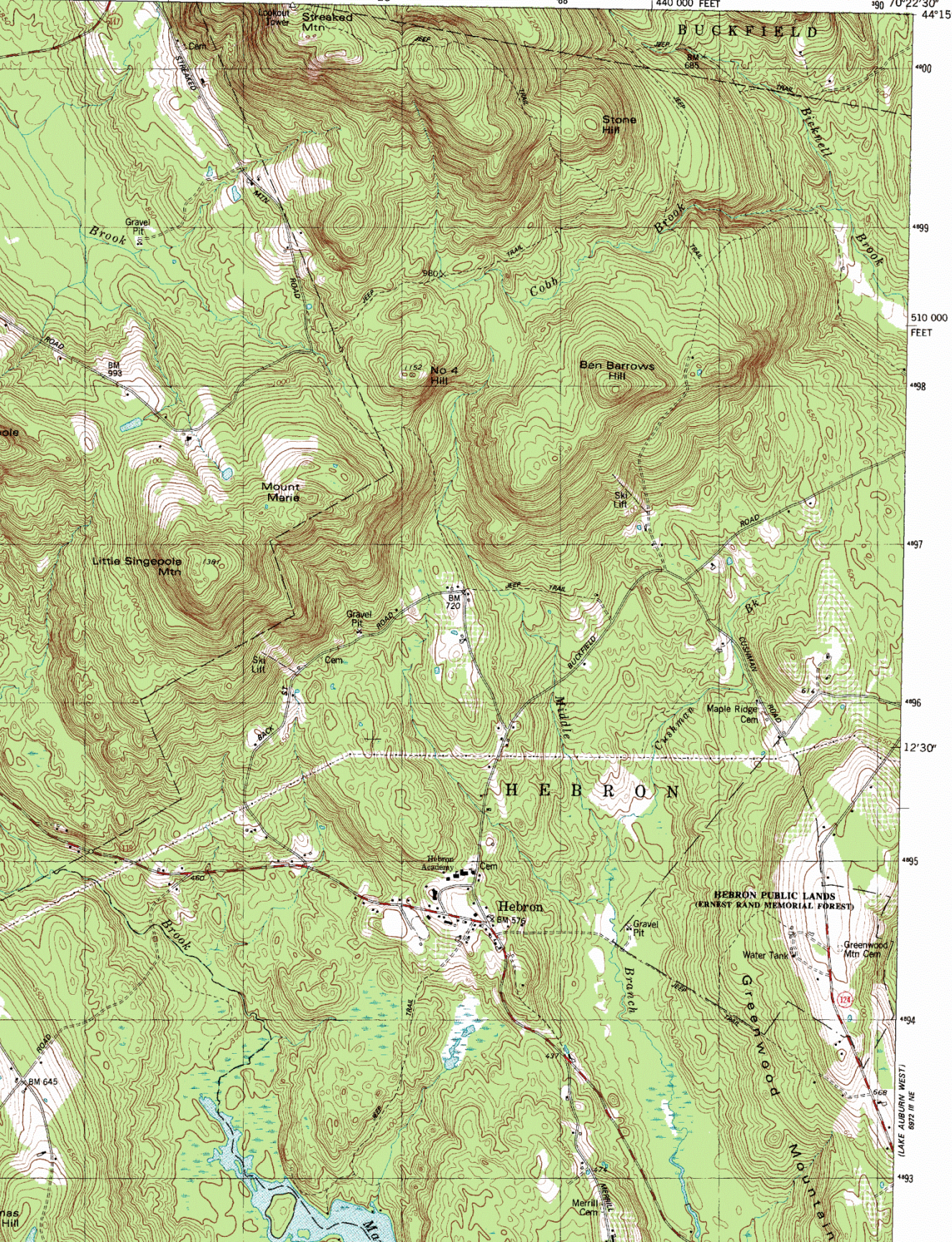
Oxford_Maine UR

OXFORD QUADRANGLE
MAINE
7.5 MINUTE SERIES (TOPOGRAPHIC)
NW/4 POLAND 15' QUADRANGLE

6972 IV SE
(BUCKFIELD)

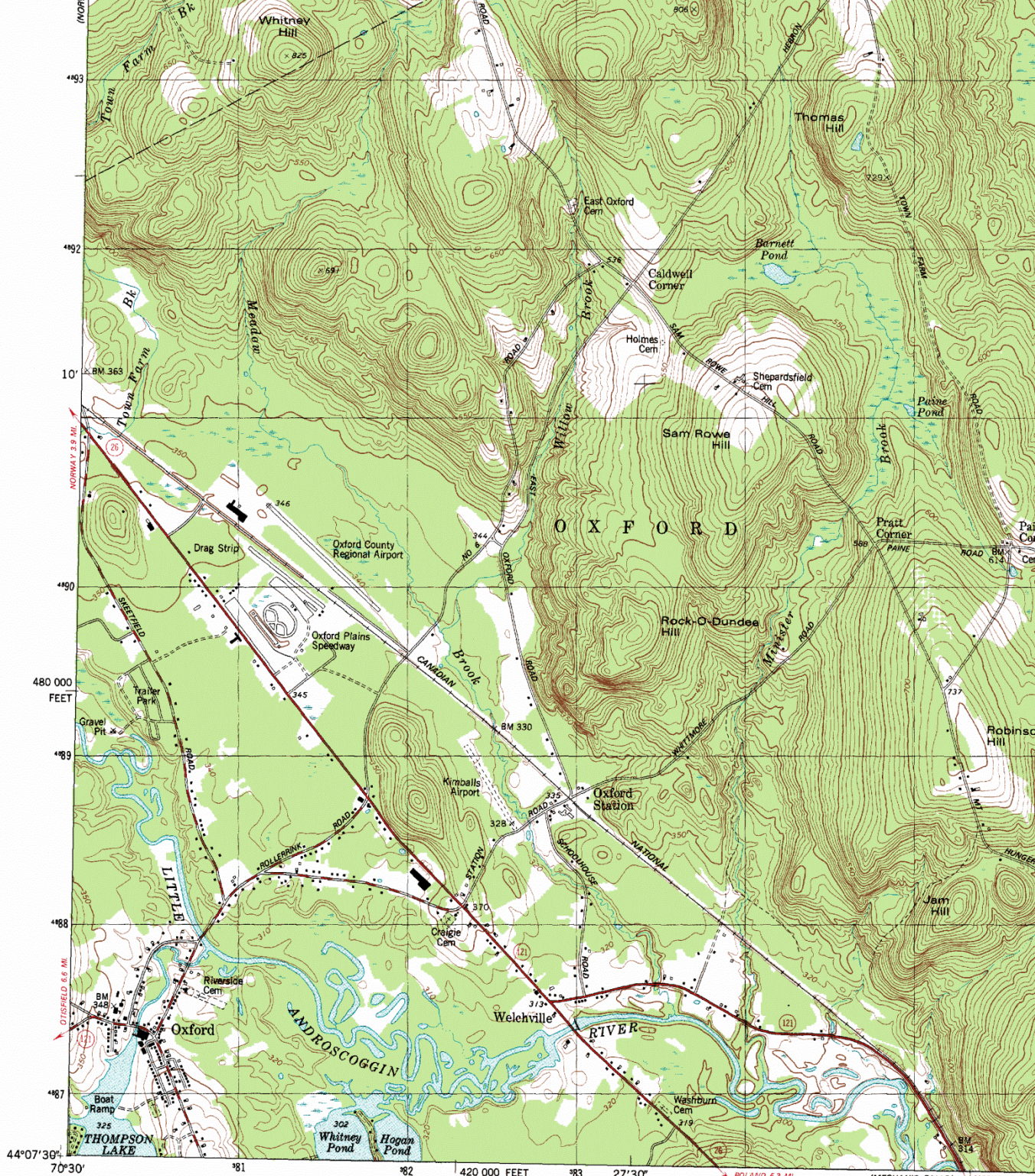
6972 IV SW
(WEST SUMMER) BUCKFIELD 51M

86 25' 88 440 000 FEET 90 70°22'30" 44°15'



6972 III NE
(LAKE AUBURN WEST)

6972 II SE
(LAKE AUBURN WEST)



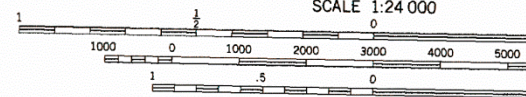
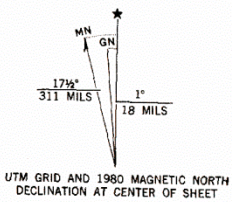
Mapped, edited, and published by the Geological Survey
 Control by USGS and NOS/NOAA

Topography by photogrammetric methods from aerial photographs
 taken 1973. Field checked 1975. Map edited 1980

Projection and 10,000-foot grid ticks: Maine coordinate
 system, west zone (transverse Mercator)
 1000-meter Universal Transverse Mercator grid, zone 19
 1927 North American Datum

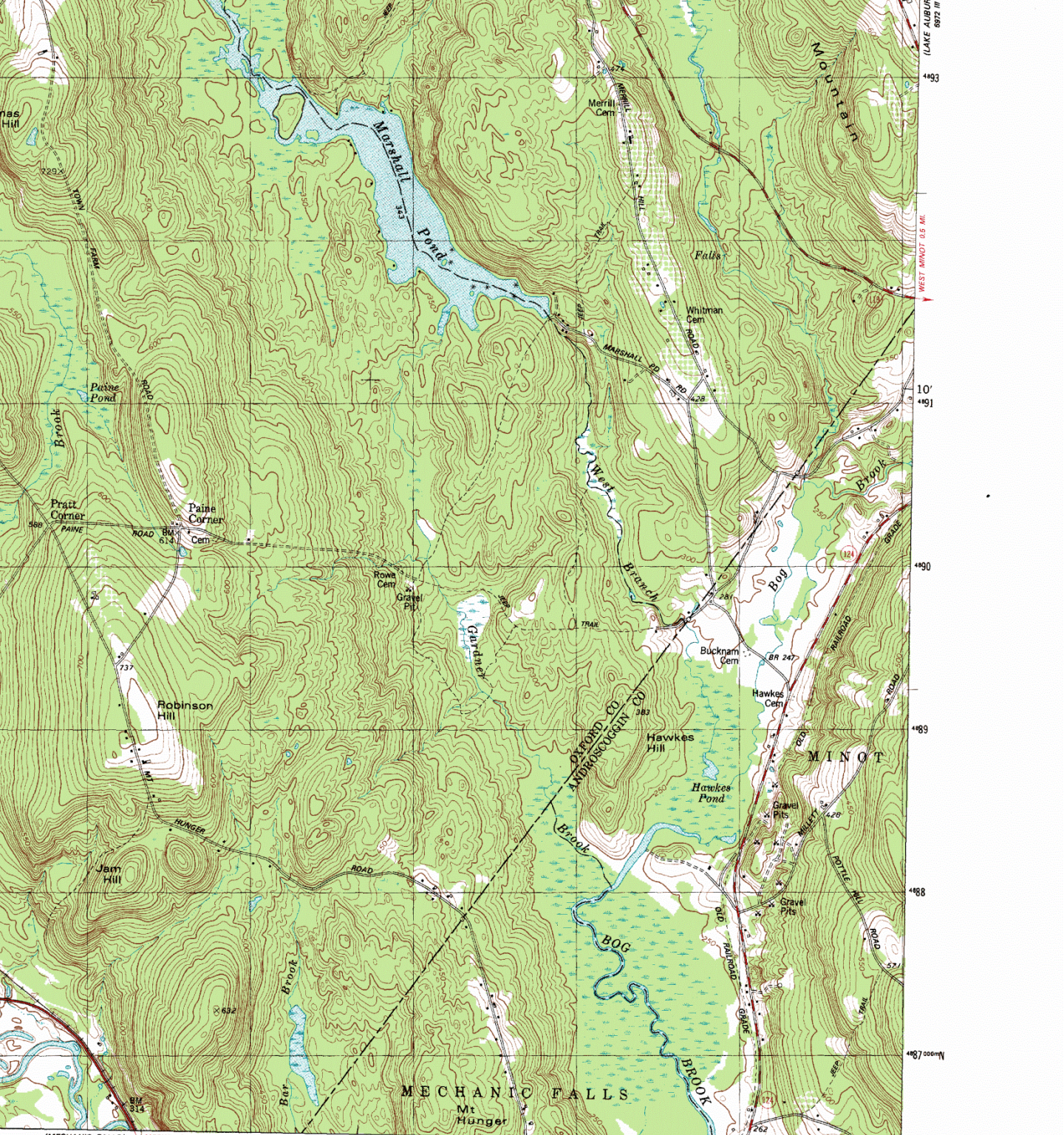
To place on the predicted North American Datum 1983
 move the projection lines 4 meters south and
 41 meters west as shown by dashed corner ticks

There may be private inholdings within the boundaries of
 the National or State reservations shown on this map



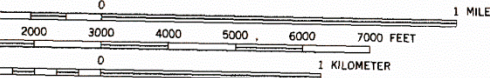
CONTOUR INTERVAL 10 FEET
 NATIONAL GEODETIC VERTICAL DATUM OF 1929

THIS MAP COMPLIES WITH NATIONAL MAP ACCURACY STA
 FOR SALE BY U. S. GEOLOGICAL SURVEY
 DENVER, COLORADO 80225, OR RESTON, VIRGINIA
 A FOLDER DESCRIBING TOPOGRAPHIC MAPS AND SYMBOLS IS AVAIL



(MECHANIC FALLS) 6972 III SW
 MECHANIC FALLS 2.7 MI. 86

SCALE 1:24 000



CONTOUR INTERVAL 10 FEET
 MEAN SEA LEVEL GEODETIC VERTICAL DATUM OF 1929

CONFORMS WITH NATIONAL MAP ACCURACY STANDARDS
 AUTHORITY: U.S. GEOLOGICAL SURVEY
 ORDER FORM: DRAGO 80225, OR RESTON, VIRGINIA 22092
 ADDITIONAL TOPOGRAPHIC MAPS AND SYMBOLS IS AVAILABLE ON REQUEST



QUADRANGLE LOCATION

ROAD CLASSIFICATION

Primary highway, hard surface	Light-duty road, hard or improved surface
Secondary highway, hard surface	Unimproved road
Interstate Route	U. S. Route
	State Route

OXFORD, MAINE
 NW/4 POLAND 15' QUADRANGLE
 N4407.5-W7022.5/7.5