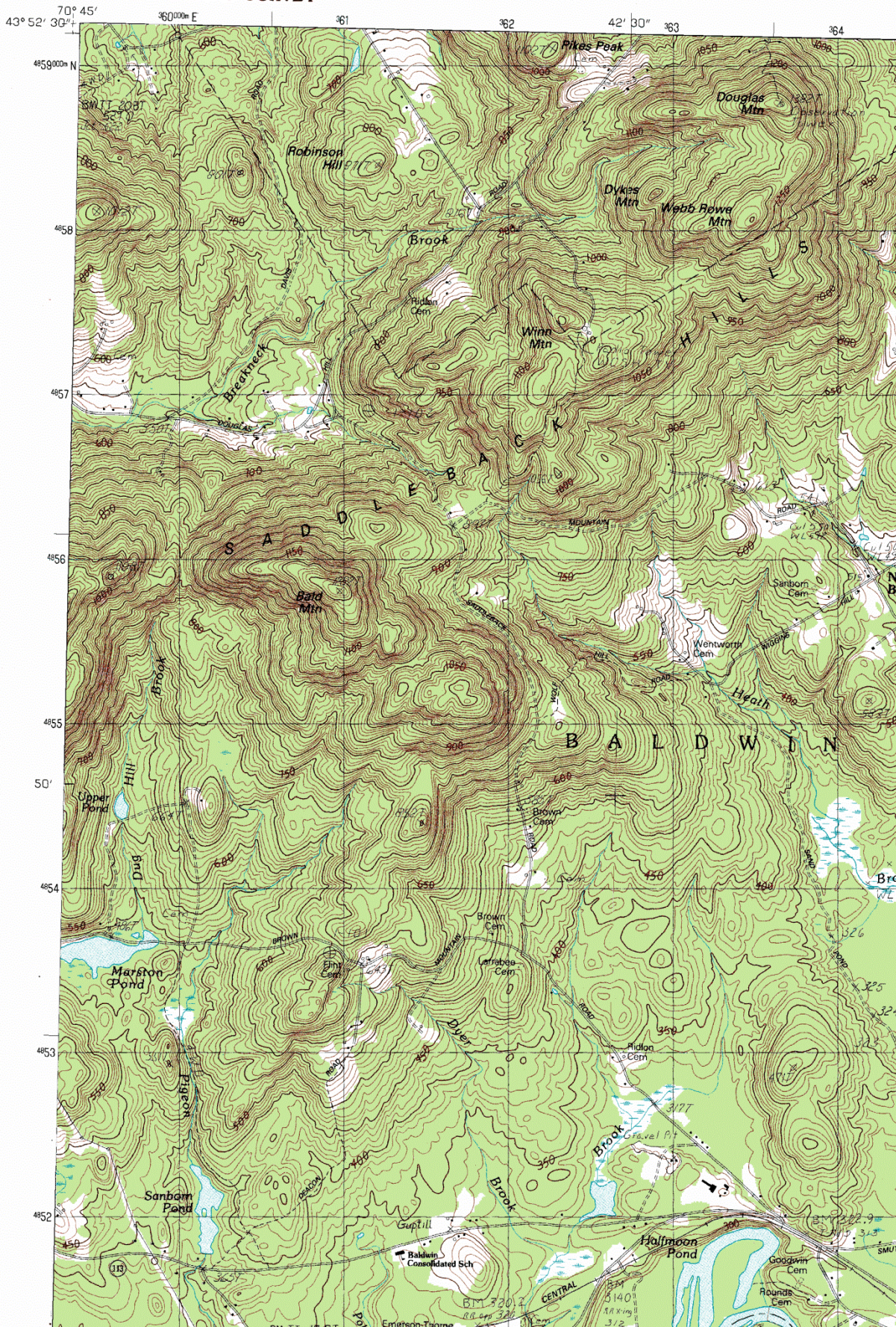
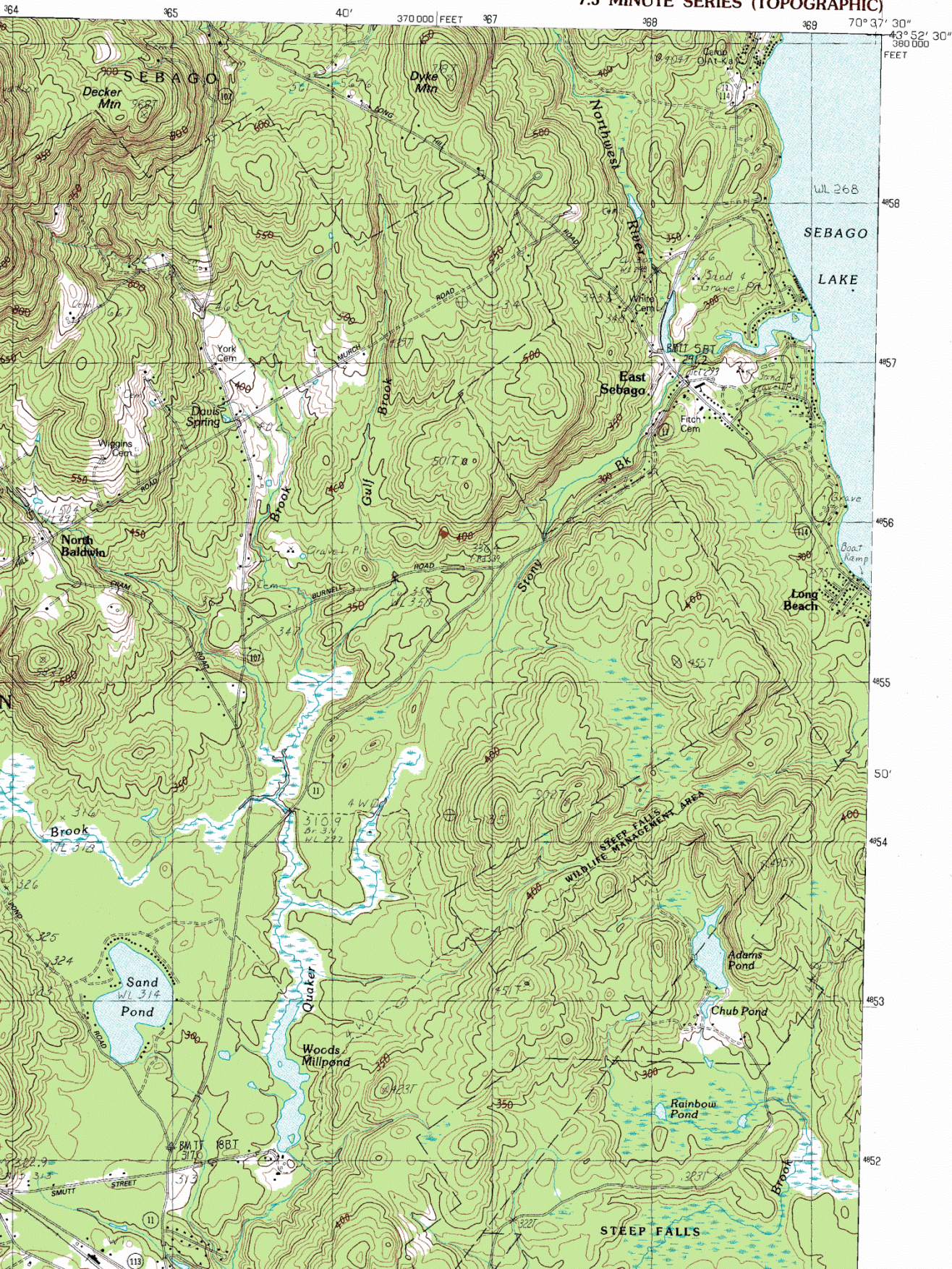


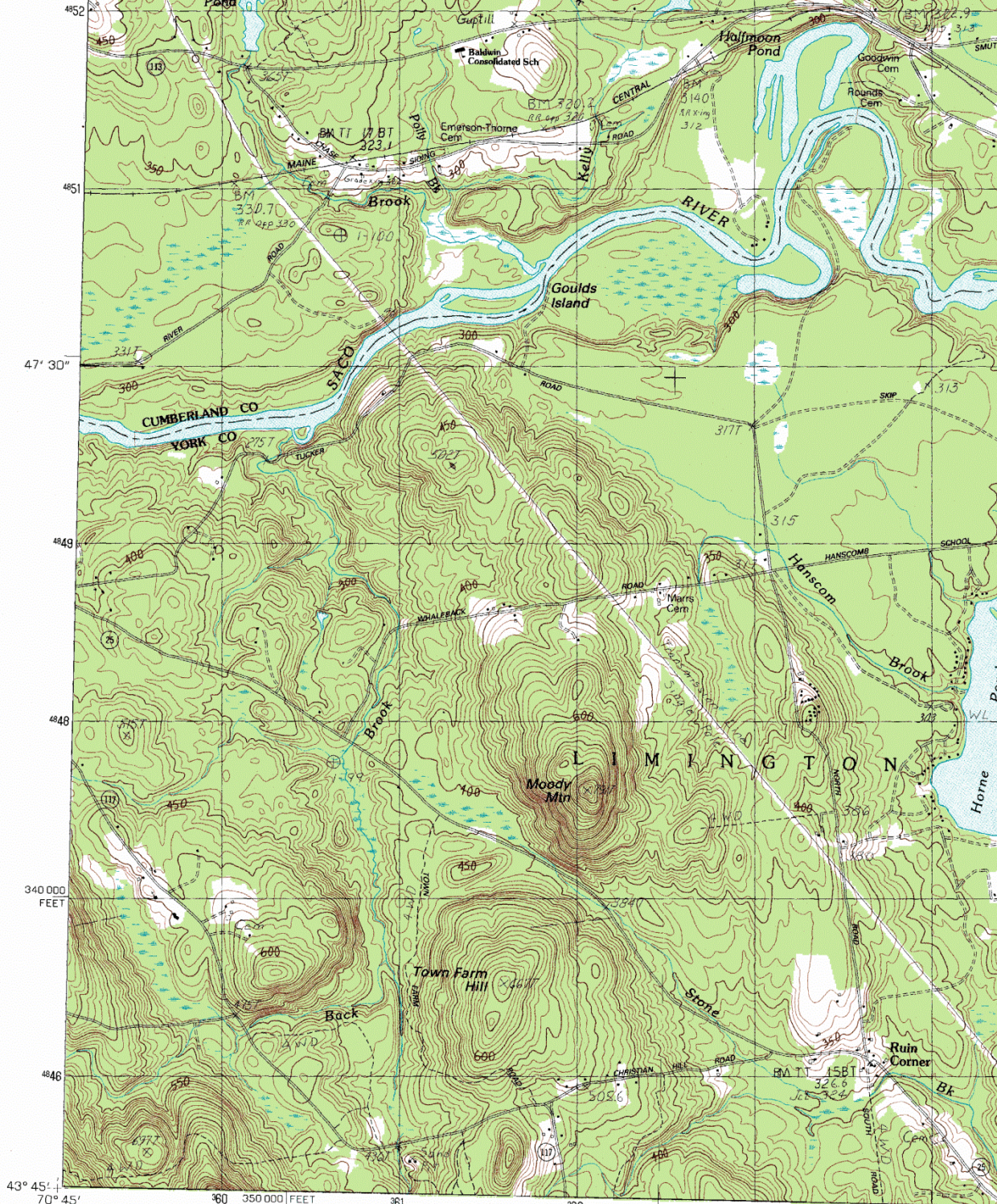
UNITED STATES
DEPARTMENT OF THE INTERIOR
GEOLOGICAL SURVEY



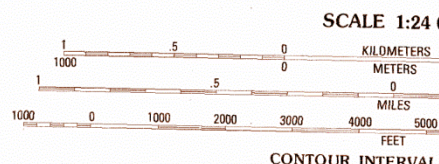
Steep_Falls_Maine UR

STEEP FALLS QUADRANGLE MAINE 7.5 MINUTE SERIES (TOPOGRAPHIC)



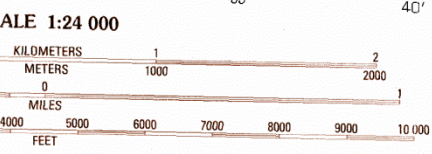


PRODUCED BY THE UNITED STATES GEOLOGICAL SURVEY
 CONTROL BY USGS AND NOS/NOAA
 COMPILED FROM AERIAL PHOTOGRAPHS TAKEN 1978
 FIELD CHECKED 1981. MAP EDITED 1983
 PROJECTION TRANSVERSE MERCATOR
 GRID: 1000-METER UNIVERSAL TRANSVERSE MERCATOR ZONE 19
 10,000-FOOT STATE GRID TICKS MAINE, WEST ZONE
 UTM GRID DECLINATION 1°10' WEST
 1983 MAGNETIC NORTH DECLINATION 17' WEST
 VERTICAL DATUM NATIONAL GEODETIC VERTICAL DATUM OF 1929
 HORIZONTAL DATUM 1927 NORTH AMERICAN DATUM
 To place on the predicted North American Datum of 1983, move
 the projection lines as shown by dashed corner ticks (4 meters
 south and 41 meters west)
 There may be private inholdings within the boundaries of any
 Federal and State Reservations shown on this map



PROVISIONAL MAP
 Produced from original
 manuscript drawings. Infor-
 mation shown as of date of
 field check

To convert meters to feet multipl
 To convert feet to meters multipl
 THIS MAP COMPLIES WITH NATIONAL MA
 FOR SALE BY U.S. GEOLOG
 DENVER, COLORADO 80225, OR RES



INTERVAL 10 FEET

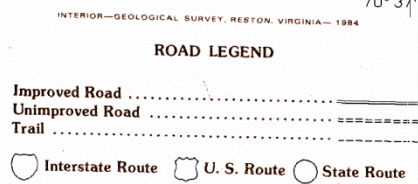
feet to meters multiply by .3048
meters to feet multiply by 3.2808

NATIONAL MAP ACCURACY STANDARDS
U. S. GEOLOGICAL SURVEY
2225, OR RESTON, VIRGINIA 22092



1	2	3	1 Hiram
			2 North Sabago
			3 Naples
4		5	4 Cornish
			5 Sabago Lake
			6 Limerick
6	7	8	7 Limington
			8 Standish

ADJOINING 7.5' QUADRANGLE NAMES



STEEP FALLS, MAINE
PROVISIONAL EDITION 1983