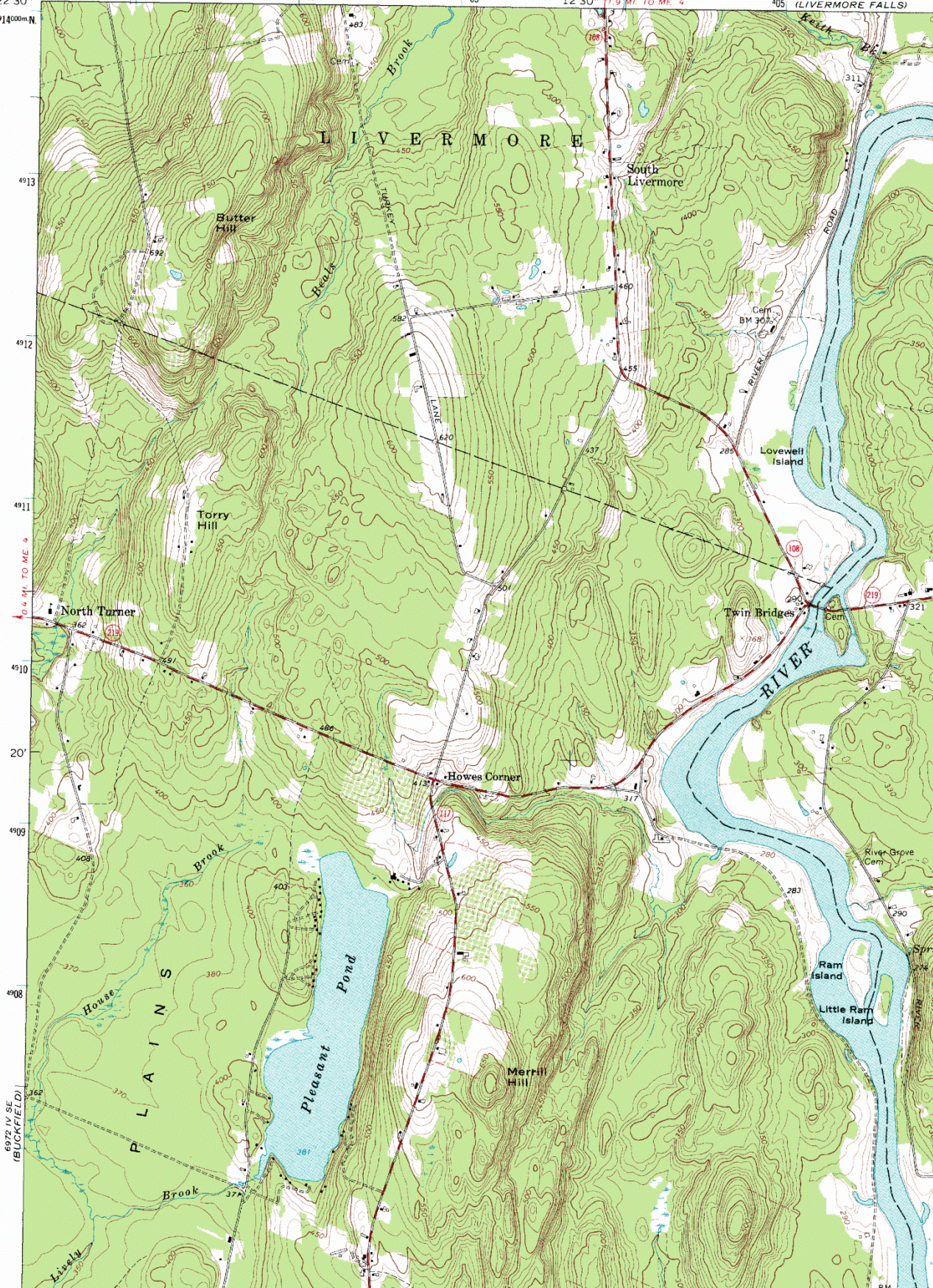


UNITED STATES
DEPARTMENT OF THE INTERIOR
GEOLOGICAL SURVEY

6932 1/4 NE
(CANTON)

70° 15' 44° 22' 30" 4914000m N 401000m E 402 403 12' 30" 1/4 MI. TO ME 4 405 6972 1/4 NW (LIVERMORE FALLS)



Turner_Maine UR

TURNER CENTER QUADRANGLE
MAINE
7.5 MINUTE SERIES (TOPOGRAPHIC)

SW/4 LIVERMORE 15' QUADRANGLE

2 MI. TO ME. 133

510 000 FEET

70°07'30"

6972 ME
(FAYETTE)

405 6972 1 NW
(LIVERMORE FALLS)

406

407 10'

408

409

44°22'30"



560 000
FEET

4913

4912

4911

4910

4909

20'

4908

4907

4906

4905

4904

4903

4902

4901

4900

4899

4898

4897

4896

(WAYNE)
6972 1 SE

WAYNE 3.2 MI

WAYNE



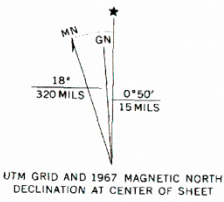
(POLAND 1:62 500)
6972 II

Mapped, edited, and published by the Geological Survey
Control by USGS and USC&GS

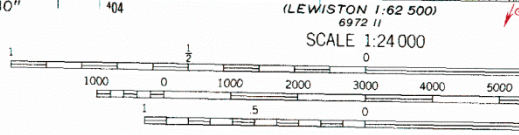
Topography by photogrammetric methods from aerial photographs
taken 1964. Field checked 1967

Polyconic projection. 1927 North American datum
10,000-foot grid based on Maine coordinate system, west zone
1000-meter Universal Transverse Mercator grid ticks,
zone 19, shown in blue

Fine red dashed lines indicate selected fence and field lines where
generally visible on aerial photographs. This information is unchecked



UTM GRID AND 1967 MAGNETIC NORTH
DECLINATION AT CENTER OF SHEET



CONTOUR INTERVAL 10 FEET
DATUM IS MEAN SEA LEVEL

THIS MAP COMPLIES WITH NATIONAL MAP ACCURACY STANDARDS
FOR SALE BY U. S. GEOLOGICAL SURVEY, WASHINGTON, D. C. 20508
A FOLDER DESCRIBING TOPOGRAPHIC MAPS AND SYMBOLS IS AVAILABLE



(LEWISTON 1:62 500) 6972 II
 (GREENE 1:62 500) 2021 5 MI.

SCALE 1:24 000



CONTOUR INTERVAL 10 FEET
 DATUM IS MEAN SEA LEVEL



ROAD CLASSIFICATION

Secondary highway, all weather, hard surface

Light-duty road, all weather, improved surface

Unimproved road, fair or dry weather

State Route

TURNER CENTER, MAINE

SW/4 LIVERMORE 15' QUADRANGLE

N4415—W7007.5/7.5

CONFORMS WITH NATIONAL MAP ACCURACY STANDARDS

U.S. GEOLOGICAL SURVEY, WASHINGTON, D. C. 20242

ADDITIONAL INFORMATION AND SYMBOLS IS AVAILABLE ON REQUEST

Turner_Maine LR