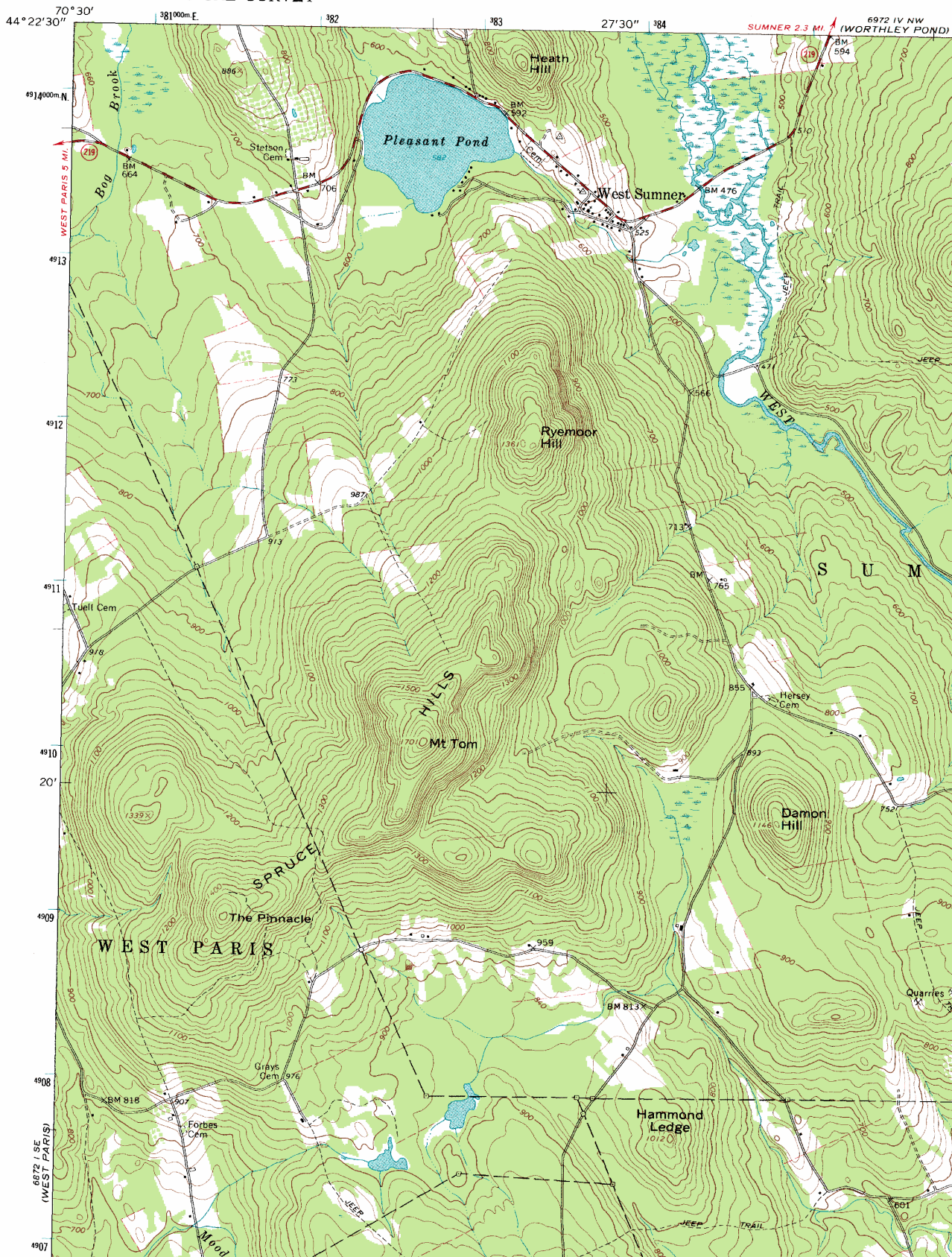


West_Summer_Maine UL

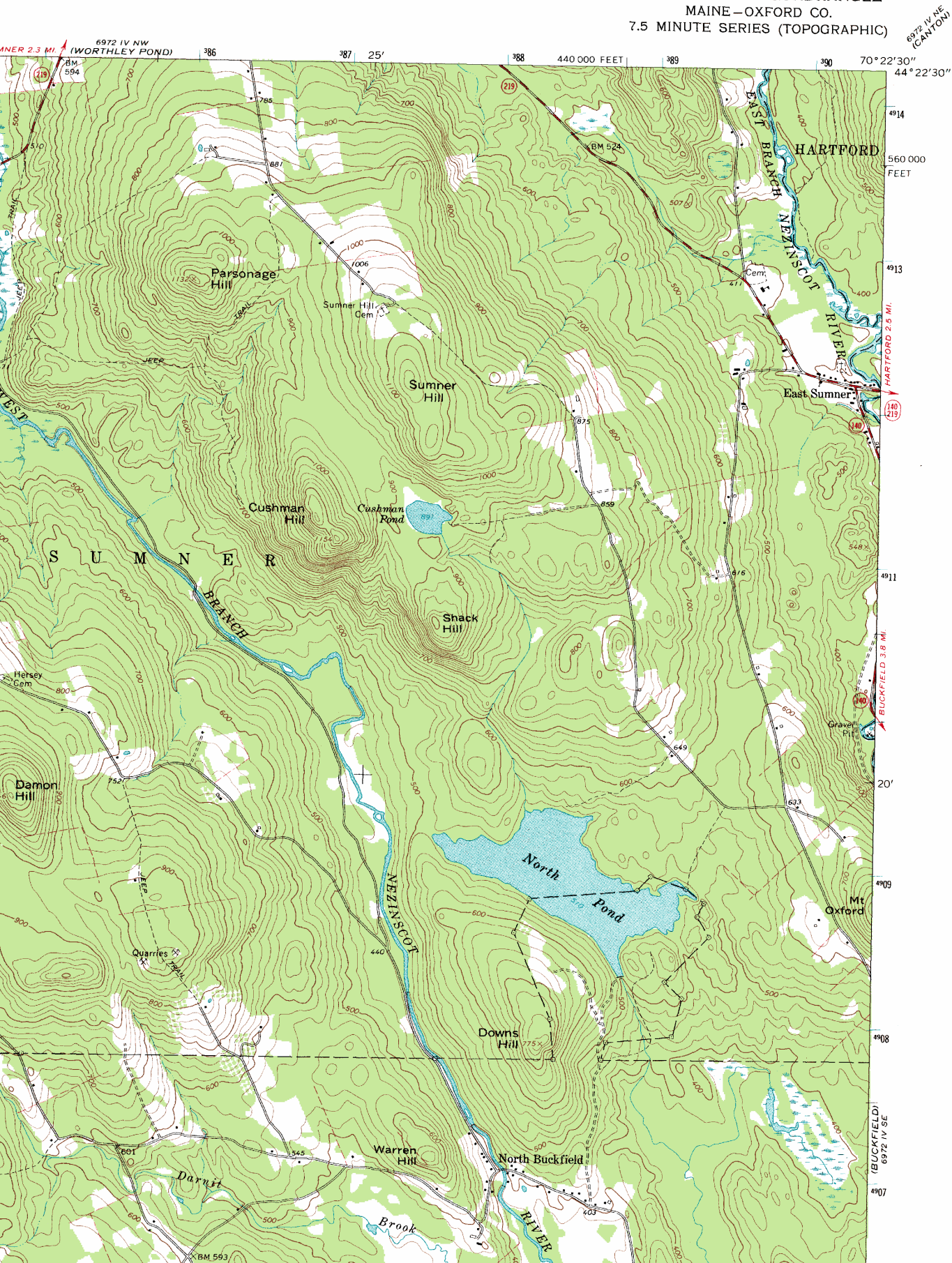
UNITED STATES
DEPARTMENT OF THE INTERIOR
GEOLOGICAL SURVEY

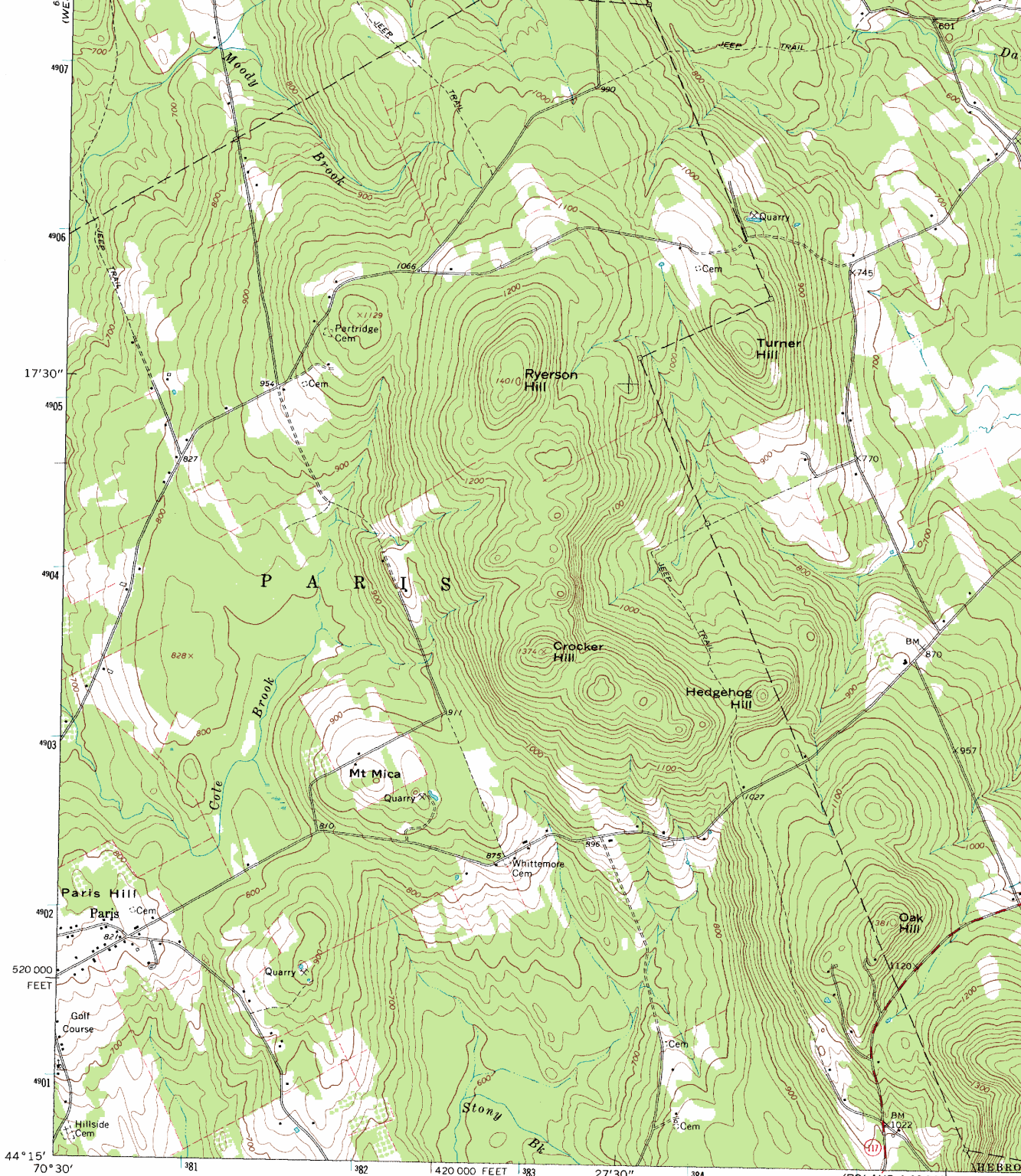
6872 NE
(MOUNT ZIRCON)



West_Summer_Maine UR

WEST SUMMER QUADRANGLE
MAINE—OXFORD CO.
7.5 MINUTE SERIES (TOPOGRAPHIC)



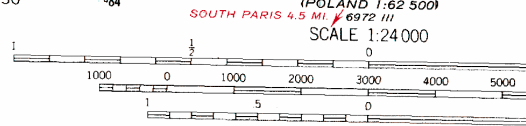
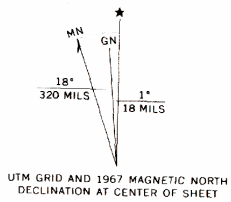


Mapped, edited, and published by the Geological Survey
 Control by USGS and USC&GS

Topography by photogrammetric methods from aerial photographs
 taken 1963. Field checked 1967

Polyconic projection. 1927 North American datum
 10,000-foot grid based on Maine coordinate system, west zone
 1000-meter Universal Transverse Mercator grid ticks,
 zone 19, shown in blue

Fine red dashed lines indicate selected fence and field lines where
 generally visible on aerial photographs. This information is unchecked



THIS MAP COMPLIES WITH NATIONAL MAP ACCURACY STANDARDS
 FOR SALE BY U. S. GEOLOGICAL SURVEY, RESTON, VIRGINIA
 A FOLDER DESCRIBING TOPOGRAPHIC MAPS AND SYMBOLS IS AVAILABLE

NORWAY 1:62 500
 6872 111



(POLAND 1:62 500)
 SCALE 1:24 000
 0 2000 3000 4000 5000 6000 7000 FEET
 0 1 KILOMETER
 CONTOUR INTERVAL 20 FEET
 MEAN GEODETIC VERTICAL DATUM OF 1929



QUADRANGLE LOCATION

ROAD CLASSIFICATION
 Secondary highway, all weather, hard surface
 Light-duty road, all weather, improved surface
 Unimproved road, fair or dry weather
 State Route

WEST SUMNER, MAINE

N4415—W7022.5/7.5

1067

West_Sumner_Maine LR

CONFORMS WITH NATIONAL MAP ACCURACY STANDARDS
 U.S. GEOLOGICAL SURVEY, RESTON, VIRGINIA 22092
 ADDITIONAL MAPS AND SYMBOLS IS AVAILABLE ON REQUEST